

TRIBALISM



by AGF

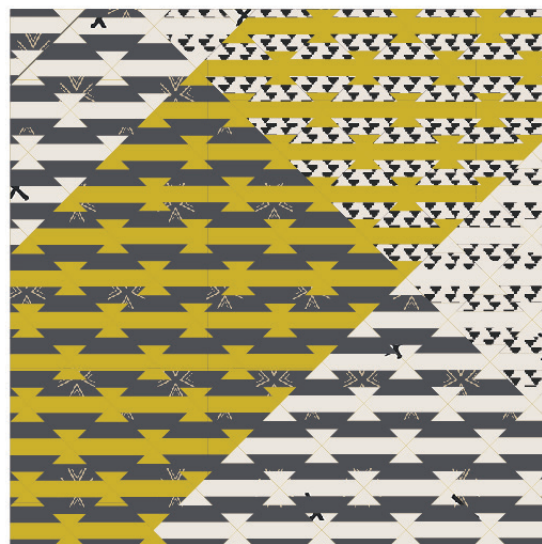
XXXXXXXXXXXXXXXXXXXXXXXXXXXX



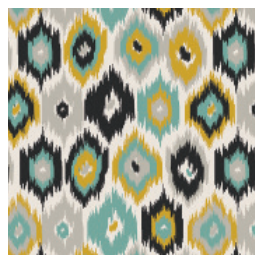
DESIGNED BY AGFstudio

<< CRAFT BOUND >>

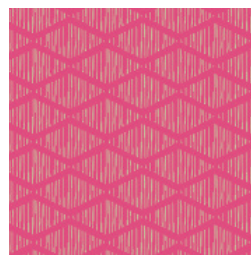
FABRICS DESIGNED BY AGFstudio



CAP-CR-1205
BLOSSOMING MOSAIC



CAP-CR-1208
BLURRY FRONTIERS



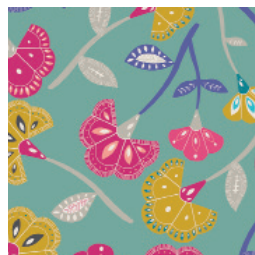
CAP-CR-1202
RHOMBI ABOARD



CAP-CR-1204
MARKED SIGHTS



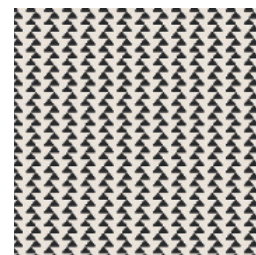
CAP-CR-1206
ETCHED CIVILIZATION



CAP-CR-1200
FANS ENFLOWERED



CAP-CR-1209
SOWING TRAILS



CAP-CR-1201
ZIGZAGGED PYRAMIDS



CAP-CR-1207
EAST WEST ARROWHEADS



CAP-CR-1203
CLOVER COMPASS



FEEL THE DIFFERENCE © 2018 Courtesy of Art Gallery Quilts LLC. All Rights Reserved.



FABRIC REQUIREMENTS

Fabric A	CAP-CR-1204	$\frac{3}{4}$
Fabric B	CAP-CR-1203	$\frac{1}{2}$
Fabric C	CAP-CR-1202	$\frac{1}{4}$
Fabric D	PE-407	$\frac{3}{4}$

CUTTING DIRECTIONS

$\frac{1}{4}$ " seam allowances are included.
WOF means width of fabric.

- Fifteen (15) WOF x 1" strips from fabric **A**.
- Sixteen (16) WOF x 1" strips from fabric **B**.
- Six (6) WOF x 1" strips from fabric **C**.
- Eighteen (18) WOF x 1" strips from fabric **D**.
- Two (2) 17" x 9" rectangles from fabric **D**.

CONSTRUCTION

Sew all rights sides together with $\frac{1}{4}$ " seam allowance. *RST* means Right Sides Together.

- Make the following strip sets:

Four (4) strip set a: A - B - A - B - A



Four (4) strip set b: D - B - D - B - D



Two (2) strip set c: D - C - D - C - D



One (1) strip set d: A - C - A - C - A

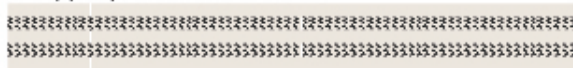


DIAGRAM 1

- Take the template and sub-cut the strips into diamonds aligning the guides with the seams.



DIAGRAM 2

- You will need thirty seven (37) Block a, thirty seven (37) Block b, twenty two (22) Block c, and thirteen (13) Block d:

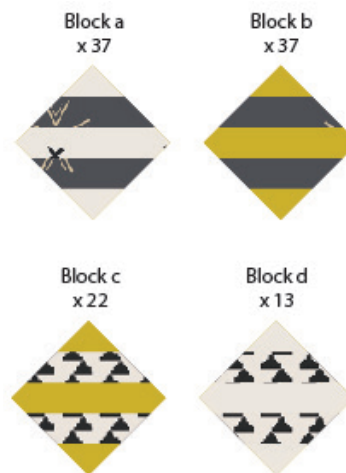
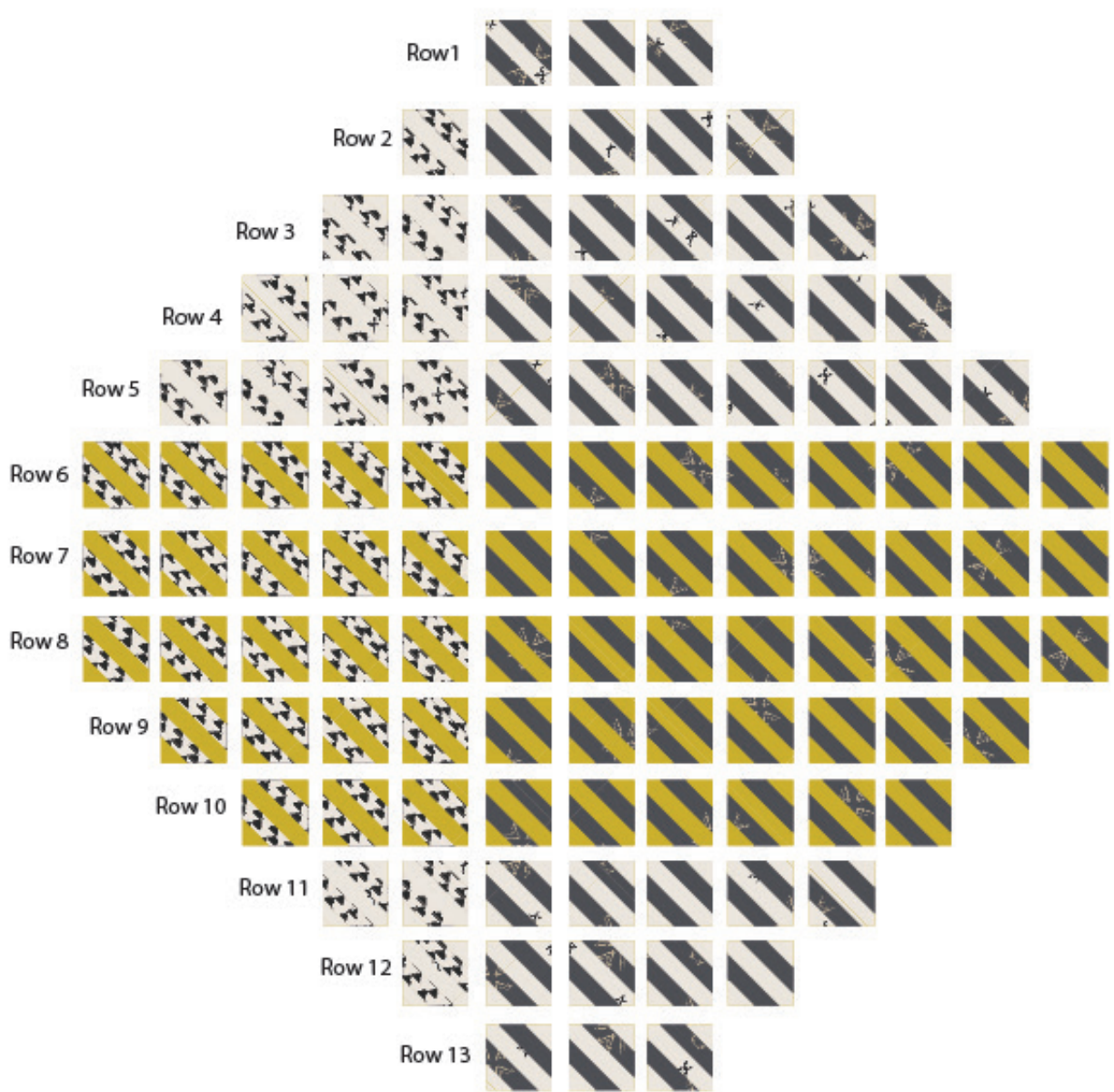


DIAGRAM 3

- Join the blocks into rows following Diagram 4:
- Row 1: a - a - a
- Row 2: d - a - a - a - a
- Row 3: d - d - a - a - a - a - a
- Row 4: d - d - d - a - a - a - a - a - a
- Row 5: d - d - d - d - a - a - a - a - a - a - a
- Row 6: c - c - c - c - c - b - b - b - b - b - b - b - b
- Row 7: c - c - c - c - c - b - b - b - b - b - b - b - b
- Row 8: c - c - c - c - c - b - b - b - b - b - b - b - b
- Row 9: c - c - c - c - b - b - b - b - b - b - b - b
- Row 10: c - c - c - b - b - b - b - b - b - b
- Row 11: a - a - a - a - a - a - a
- Row 12: a - a - a - a - a
- Row 13: a - a - a



- Trim the final piece to 16½" x 16½".

QUILT ASSEMBLY

Sew rights sides together.

- Place BACKING FABRIC on a large surface wrong side up. Stretch it with masking tape against that surface.
- Place BATTING on top of backing fabric.
- Place TOP on top of the batting with right side facing up. Smooth away wrinkles using your hands.
- Pin all layers together and baste with basting thread, using long stitches. You can also use safety pins to join the layers.
- Machine or hand quilt starting at the center and working towards the corners. Remember that quilting motifs are a matter of personal preference. Have fun choosing yours!
- After you finished, trim excess of any fabric or batting, squaring the quilt to proceed to bind it.

BACK PILLOW

Sew rights sides together.

- Take two (2) 17" x 9" rectangles from fabric **D**.
- Finish one 17" edge on each rectangle by folding the edge ¼" twice and then edge-stitching.
- Pin both rectangles to the right side of the pillow top in a way that they overlap in the center of the pillow.
- Stitch all around at ¼".



artgalleryfabrics.com

*NOTE: While all possible care has been taken to ensure the accuracy of this pattern, We are not responsible for printing errors or the way in which individual work varies.
Please read instructions carefully before starting the construction of this quilt. If desired, wash and iron your fabrics before starting to cut.*