

# Rocket Star



capsules  
by AGF

FREE PATTERN

XXXXXXXXXXXXXXXXXXXXXXXXXXXX



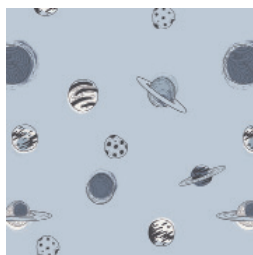
QUILT DESIGNED BY *AGFstudio*



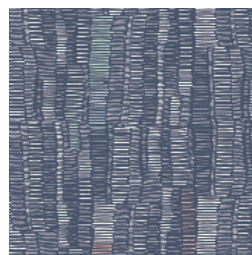
FABRICS DESIGNED BY *AGFstudio*



CAP-ST-1106  
TWINKLY PHASES



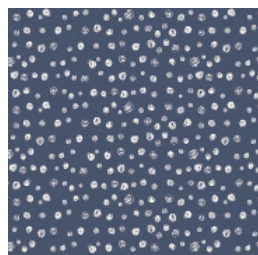
CAP-ST-1108  
PLANETARIUM



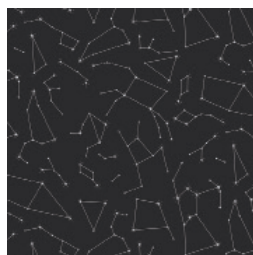
CAP-ST-1103  
INTERRUPTED SIGNAL



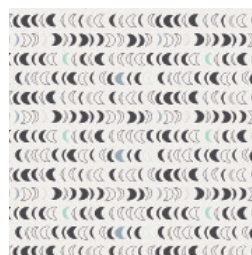
CAP-ST-1104  
TO BEARFINITY & BEYOND!



CAP-ST-1107  
STARDUST



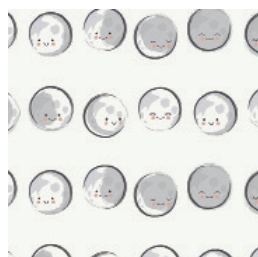
CAP-ST-1101  
CONNECT THE STARS



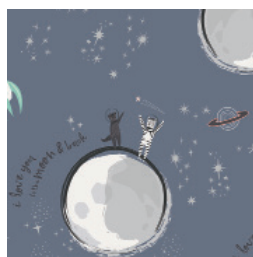
CAP-ST-1102  
LUNAR STAMPS



CAP-ST-1109  
ASTROMAGICAL-FULL-REPEAT



CAP-ST-1105  
HAPPY MOONS



CAP-ST-1100  
SPATIAL FRIENDS







FINISHED SIZE | 66" x 66"

## FABRIC REQUIREMENTS

Fabric <b>A</b>	CAP-ST-1109	1 yd.
Fabric <b>B</b>	CAP-ST-1102	$\frac{3}{8}$ yd.
Fabric <b>C</b>	CAP-ST-1105	$\frac{3}{8}$ yd.
Fabric <b>D</b>	CAP-ST-1101	$\frac{3}{8}$ yd.
Fabric <b>E</b>	CAP-ST-1100	FQ.
Fabric <b>F</b>	CAP-ST-1106	FQ.
Fabric <b>G</b>	CAP-ST-1107	2 yds.
Fabric <b>H</b>	PE-433	2 $\frac{1}{8}$ yd.
Fabric <b>I</b>	CAP-ST-1104	$\frac{3}{8}$ yd.

### BINDING FABRIC

CAP-ST-1104 (Fabric **G**) *(included)*

### BACKING FABRIC

CAP-ST-1108 *(suggested)* 4  $\frac{1}{2}$  yds.

## CUTTING DIRECTIONS

$\frac{1}{4}$ " seam allowances are included.  
WOF means width of fabric.



DIAGRAM 1

- Six (6)  $12\frac{1}{2}$ " x  $12\frac{1}{2}$ " squares from fabric **A**.
- Center the images of each panel, only for the black panel align the square to the left side of the panel following Diagram 1.

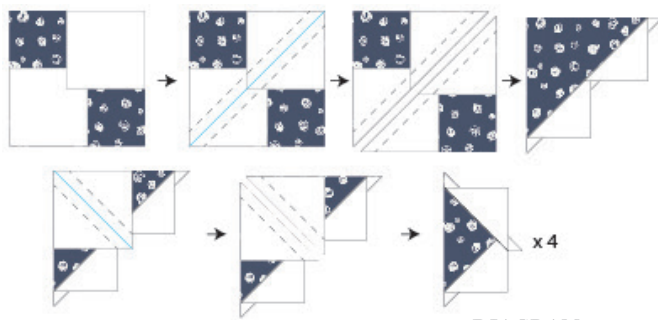
XXXXXXXXXXXXXXXXXXXXXXXXXXXXXXXXXXXX

- Three (3)  $12\frac{1}{2}$ " x  $12\frac{1}{2}$ " squares from fabrics **B**, **C** and **D**.
- One (1)  $12\frac{1}{2}$ " x  $12\frac{1}{2}$ " squares from fabrics **E** and **F**.
- Seventy two (72)  $2\frac{7}{8}$ " x  $2\frac{7}{8}$ " squares from fabric **G**.
- Twelve (12)  $5\frac{1}{4}$ " x  $5\frac{1}{4}$ " squares from fabric **G**.
- Sixteen (16)  $4\frac{1}{2}$ " x  $2\frac{1}{2}$ " rectangles from fabric **G**.
- Sixteen (16)  $2\frac{1}{2}$ " x  $2\frac{1}{2}$ " squares from fabric **G**.
- Eight (8)  $5\frac{1}{2}$ " x  $5\frac{1}{2}$ " squares from fabric **G**.
- Eight (8)  $1\frac{1}{2}$ " x  $1\frac{1}{2}$ " squares from fabric **G**.
- Four (4)  $3\frac{1}{2}$ " x  $3\frac{1}{2}$ " squares from fabric **G**.
- Eight (8)  $5\frac{3}{4}$ " x  $5\frac{3}{4}$ " squares from fabrics **G** and **H**.
- Forty eight (48)  $2\frac{7}{8}$ " x  $2\frac{7}{8}$ " squares from fabric **H**.
- Eighteen (18)  $5\frac{1}{4}$ " x  $5\frac{1}{4}$ " squares from fabric **H**.
- Eight (8)  $3\frac{1}{2}$ " x  $3\frac{1}{2}$ " squares from fabric **H**.
- Twelve (12)  $2\frac{1}{2}$ " x  $2\frac{1}{2}$ " squares from fabric **H**.
- Thirty (30)  $12\frac{1}{2}$ " x  $1\frac{1}{2}$ " strips from fabric **H**.
- Six (6)  $6\frac{1}{2}$ " x  $1\frac{1}{2}$ " strips from fabric **H**.

## CONSTRUCTION

*Sew all rights sides together with  $\frac{1}{4}$ " seam allowance.*

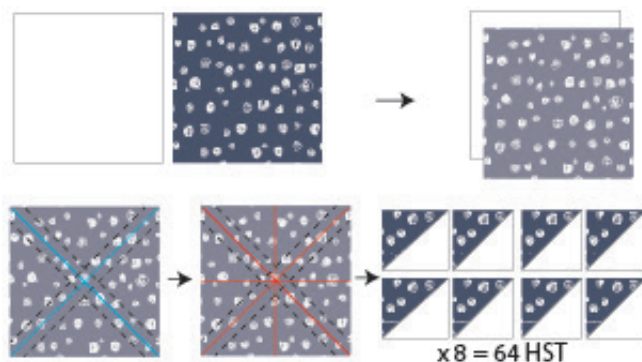
- Use the 'Four at a Time' technique to make the following flying geese:
- Place face to face two (2) small squares on the extreme corners of the big square.
- Draw a diagonal line and stitch at  $\frac{1}{4}$ " from each side.
- Trim on the drawn line.
- Press open the ears of the two resulting pieces
- Place face to face a small square on the unsewn corner of each of the two (2) resulting triangles with ears.
- Draw a diagonal line on the small square and stitch at  $\frac{1}{4}$ " from each side.
- Trim on the drawn line.
- Press open each of the four (4) resulting flying geese.
- For fabric placement and attachment follow Diagram 2.



- Flying Geese a (FGa):
- Take twelve (12)  $5\frac{1}{4}" \times 5\frac{1}{4}"$  squares from fabric **G**, and forty eight (48)  $2\frac{7}{8}" \times 2\frac{7}{8}"$  squares from fabric **H**, to get forty eight flying geese in total.
- Flying Geese b (FGb):
- Take eighteen (18)  $5\frac{1}{4}" \times 1\frac{1}{4}"$  squares from fabric **H**, and seventy two (72)  $2\frac{7}{8}" \times 2\frac{7}{8}"$  squares from fabric **G**, to get seventy two in total.



- Take eight (8) 5¼" x 5¼" squares from fabrics **G** and **H**, and use the eight at a time HST to make a total of forty eight (48) HST.
- Place each pair of squares face to face and draw two diagonal lines.
- Stitch at ¼" from each side.
- Trim on the drawn lines and on the vertical and horizontal lines following Diagram 4.
- In total you should have sixty eight (68) HSTs.



- Make triangle a and triangle b using FGa and FGb:

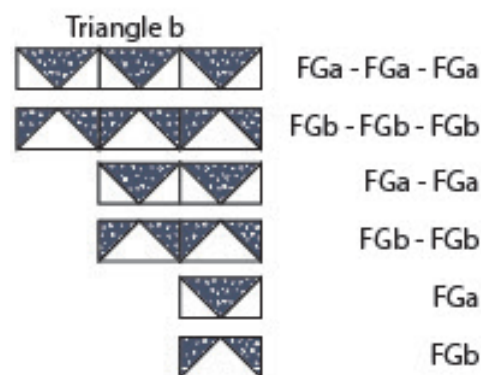
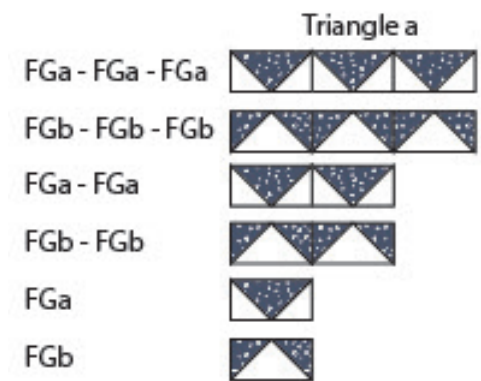


DIAGRAM 5

- Trim the triangles using template a:

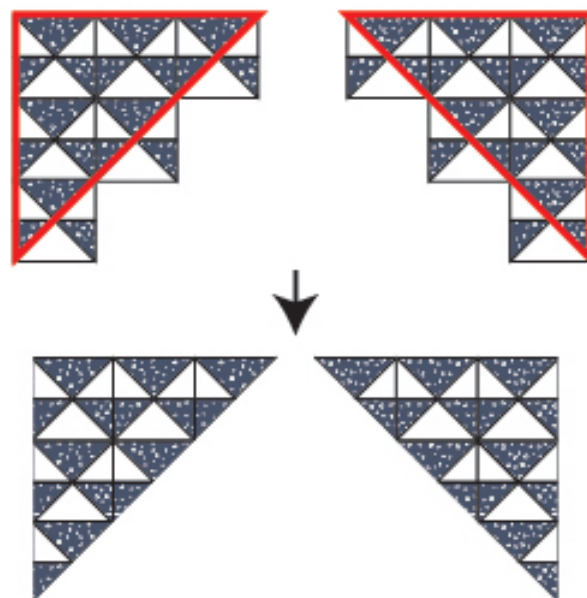
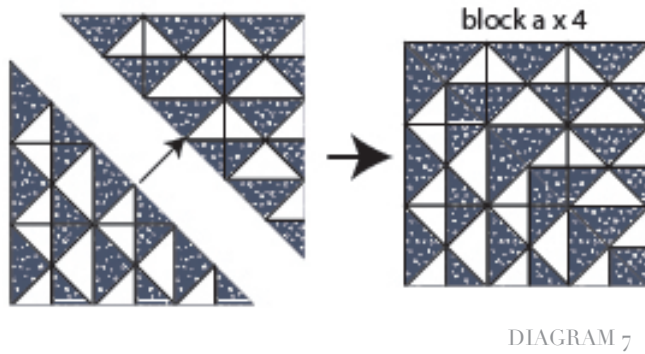
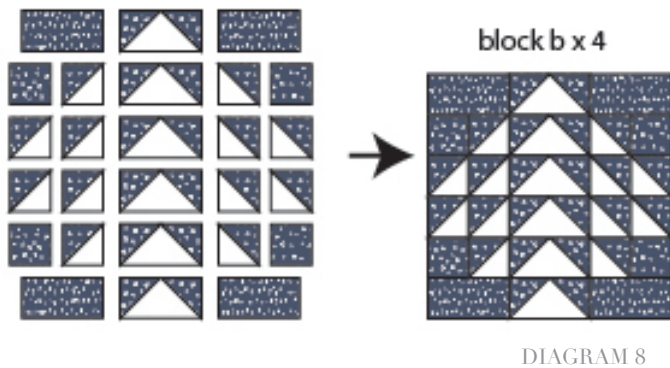


DIAGRAM 6

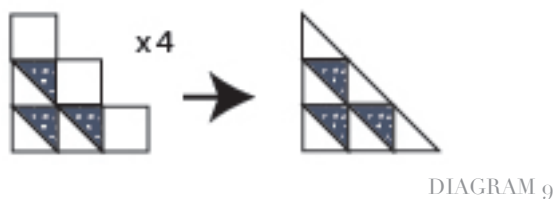
- Join the resulting triangles to make block a.



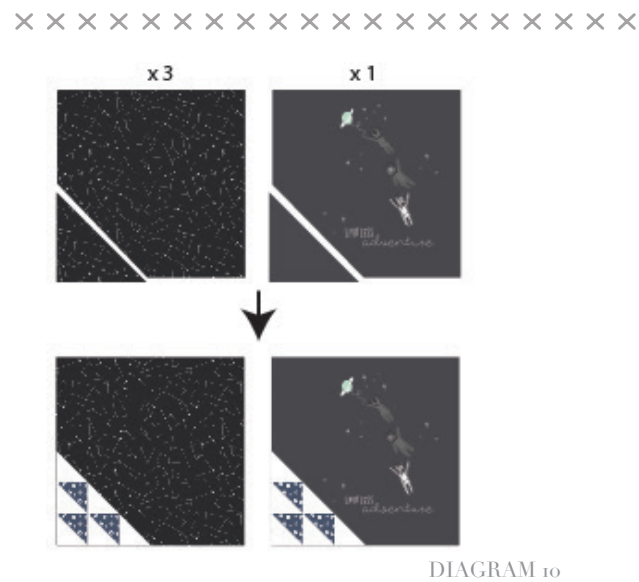
- Following Diagram 8 make four (4) block b:



- Take twelve (12) HST, and twelve (12)  $2\frac{1}{2}'' \times 2\frac{1}{2}''$  squares from fabric **H**.
- Join and trim them following Diagram 9.



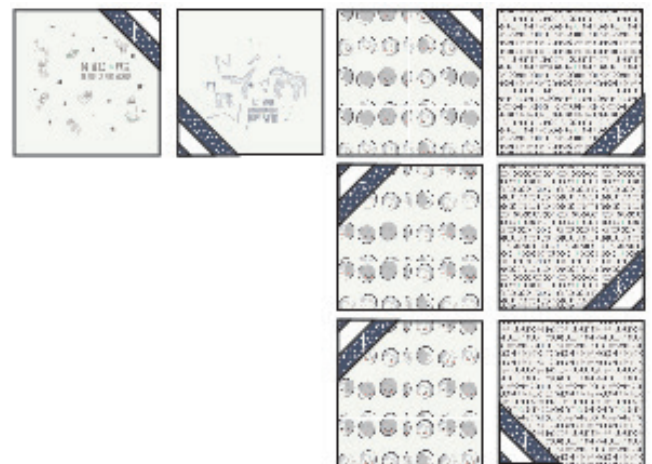
- Take three (3) 12½" x 12½" squares from fabric **D**, one (1) 12½" x 12½" gray square from fabric **A**,
- Trim template 3 from the corners of the 12 1/2" x 12 1/2" squares and join the triangles from Diagram 9 to complete Block c.



- Take four (4) 3½" x 3½" squares from fabric **G**, and do corner square triangles on the moon panel from fabric **A**:



- Take eight (8)  $5\frac{1}{2}" \times 5\frac{1}{2}"$  squares from fabric **G**, eight (8)  $3\frac{1}{2}" \times 3\frac{1}{2}"$  squares from fabric **H**, and eight (8)  $1\frac{1}{2}" \times 1\frac{1}{2}"$  squares from fabric **G**.
- Do corner square triangles to the following  $12\frac{1}{2}" \times 12\frac{1}{2}"$  squares following Diagram 12.
- First do the  $5\frac{1}{2}"$  squares, then the  $3\frac{1}{2}"$  squares, and finish with the  $1\frac{1}{2}"$  squares.





- [illegible]

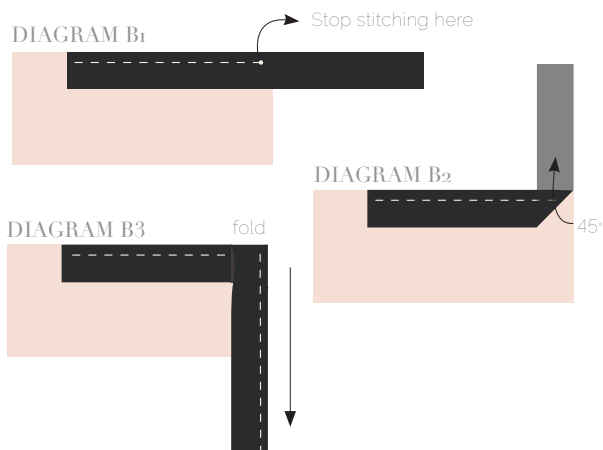
artgalleryfabrics.com

## QUILT ASSEMBLY

*Sew rights sides together.*

- Place BACKING FABRIC on a large surface wrong side up. Stretch it with masking tape against that surface.
- Place BATTING on top of backing fabric.
- Place TOP on top of the batting with right side facing up. Smooth away wrinkles using your hands.
- Pin all layers together and baste with basting thread, using long stitches. You can also use safety pins to join the layers.
- Machine or hand quilt starting at the center and working towards the corners. Remember that quilting motifs are a matter of personal preference. Have fun choosing yours!
- After you finished, trim excess of any fabric or batting, squaring the quilt to proceed to bind it.

- Stop stitching before you reach the last 5 or 6 inches. Cut the threads and remove the quilt from under the machine presser foot. Lay the loose ends of the binding flat along the quilt edge, folding the ends back on themselves where they meet. Press them together to form a crease. Using this crease as the stitching line, sew the two open ends of the binding with right sides together (you can help yourself marking with a pencil if the crease is difficult to see).
- Trim seam to  $\frac{1}{4}$ " and press open. Complete the sewing. Turn binding to back of the quilt, turn raw edge inside and stitch by hand using blind stitch.



[artgalleryfabrics.com](http://artgalleryfabrics.com)

**NOTE:** While all possible care has been taken to ensure the accuracy of this pattern, We are not responsible for printing errors or the way in which individual work varies. Please read instructions carefully before starting the construction of this quilt. If desired, wash and iron your fabrics before starting to cut.

## BINDING

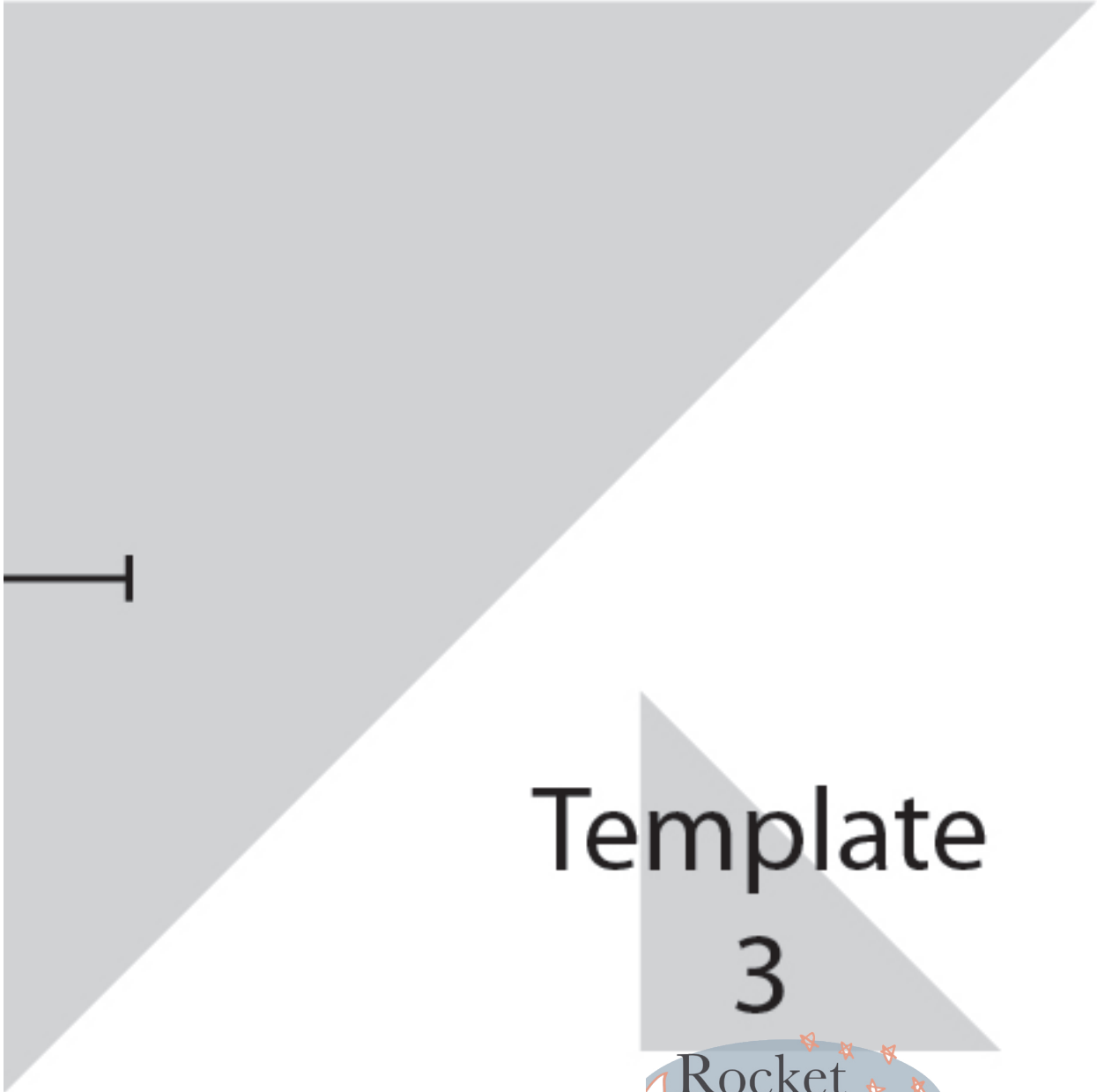
*Sew rights sides together.*

- Cut enough strips  $1\frac{1}{2}$ ' wide by the width of the fabric **G** to make a final strip 275' long. Start sewing the binding strip in the middle of one of the sides of the quilt, placing the strip right side down and leaving an approximated 5" tail. Sew with  $\frac{1}{4}$ " seam allowance (using straight stitch), aligning the strip's raw edge with the quilt top's raw edge.
- Stop stitching  $\frac{1}{4}$ " before the edge of the quilt (**DIAGRAM B 1**). Clip the threads. Remove the quilt from under the machine presser foot. Fold the strip in a motion of 45° and upward, pressing with your fingers (**DIAGRAM B2**). Hold this fold with your finger, bring the strip down in line with the next edge, making a horizontal fold that aligns with the top edge of the quilt (**DIAGRAM B3**). Start sewing at  $\frac{1}{4}$ " of the border, stitching all the layers. Do the same in the four corners of the quilt.

# Template 1








Template  
3

Rocket



# Template 2

The logo is an oval with a light blue background. On the left side of the oval is a white crescent moon with a thin orange outline. To the right of the moon, the word "Rocket" is written in a black, sans-serif font, and the word "Star" is written below it in a black, cursive script font. Scattered around the text are several small, orange, five-pointed stars with thin black outlines.