
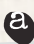




# PYRAMID POINTS



capsules  
     
by AGF

FREE PATTERN

XXXXXXXXXXXXXXXXXXXXXXXXXXXX

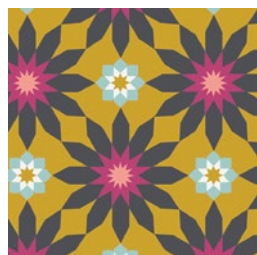


# PYRAMID POINTS

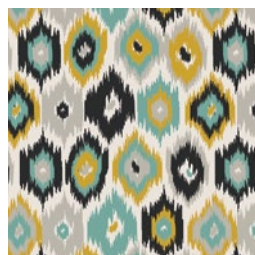


<< CRAFTBOUND >>

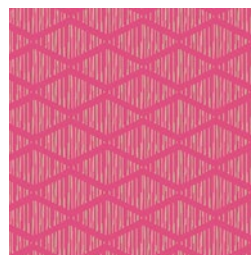
FABRICS DESIGNED BY AGFstudio



CAP-CR-1205  
BLOSSOMING MOSAIC



CAP-CR-1208  
BLURRY FRONTIERS



CAP-CR-1202  
RHOMBI ABROAD



CAP-CR-1204  
MARKED SIGHTS



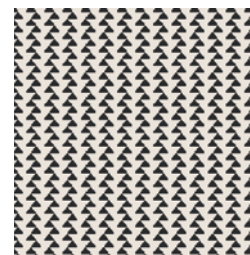
CAP-CR-1206  
ETCHED CIVILIZATION



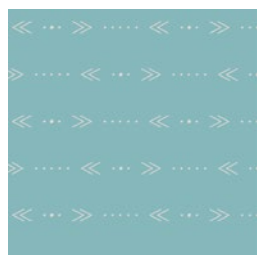
CAP-CR-1200  
FANS ENFLOWERED



CAP-CR-1209  
SOWING TRAILS



CAP-CR-1201  
ZIGZAGGED PYRAMIDS



CAP-CR-1207  
EAST WEST ARROWHEADS



CAP-CR-1203  
CLOVER COMPASS



FEEL THE DIFFERENCE © 2018 Courtesy of Art Gallery Quilts LLC. All Rights Reserved.

# PYRAMID POINTS

FINISHED SIZE | 70" × 90"

## FABRIC REQUIREMENTS

Fabric <b>A</b>	CAP-CR-1202	$\frac{3}{8}$ yd.
Fabric <b>B</b>	CAP-CR-1201	$\frac{7}{8}$ yd.
Fabric <b>C</b>	CAP-CR-1208	1 $\frac{1}{3}$ yd.
Fabric <b>D</b>	CAP-CR-1207	$\frac{3}{8}$ yd.
Fabric <b>E</b>	CAP-CR-1200	$\frac{3}{4}$ yd.
Fabric <b>F</b>	PRE-800	$\frac{1}{4}$ yd.
Fabric <b>G</b>	PRE-817	$\frac{1}{4}$ yd.
Fabric <b>H</b>	PE-418	$\frac{1}{4}$ yd.
Fabric <b>I</b>	PRE-807	$\frac{3}{8}$ yd.
Fabric <b>J</b>	PE-407	$\frac{1}{4}$ yd.
Fabric <b>K</b>	CAP-CR-1209	$\frac{3}{8}$ yd.
Fabric <b>L</b>	CAP-CR-1206	$\frac{7}{8}$ yd.
Fabric <b>M</b>	PE-439	$\frac{1}{4}$ yd.
Fabric <b>N</b>	CAP-CR-1205	$\frac{3}{8}$ yd.
Fabric <b>O</b>	CAP-CR-1203	$\frac{1}{4}$ yd.
Fabric <b>P</b>	CAP-CR-1204	5 $\frac{1}{6}$ yd.

### BINDING FABRIC

CAP-CR-1208 (Fabric **C**) *(included)*

### BACKING FABRIC

CAP-CR-1201 *(suggested)* 6 yd.

## CUTTING DIRECTIONS

$\frac{1}{4}$ " seam allowances are included.  
WOF means width of fabric.

- Nine (9) of Template 1 from Fabrics **A, N**
- Thirty five (35) of Template 1 from Fabric **B**
- Thirty eight (38) of Template 1 from Fabric **C**
- Fourteen (14) of Template 1 from Fabric **D**
- Thirty two (32) of Template 1 from Fabric **E**
- Five (5) of Template 1 from Fabrics **F, H**
- Two (2) of Template 1 from Fabrics **G, J, M**
- Ten (10) of Template 1 from Fabric **I**

XX

- Eleven (11) of Template 1 from Fabric **K**
- Thirty four (34) of Template 1 from Fabric **L**
- Four (4) of Template 1 from Fabric **O**
- One Hundred and one (101) of Template 1 from Fabric **P**

## CONSTRUCTION

*Sew all rights sides together with  $\frac{1}{4}$ " seam allowance. RST means Right Sides Together.*

- After cutting all your fabric pieces, follow the Diagram on the next page for the quilt assembly



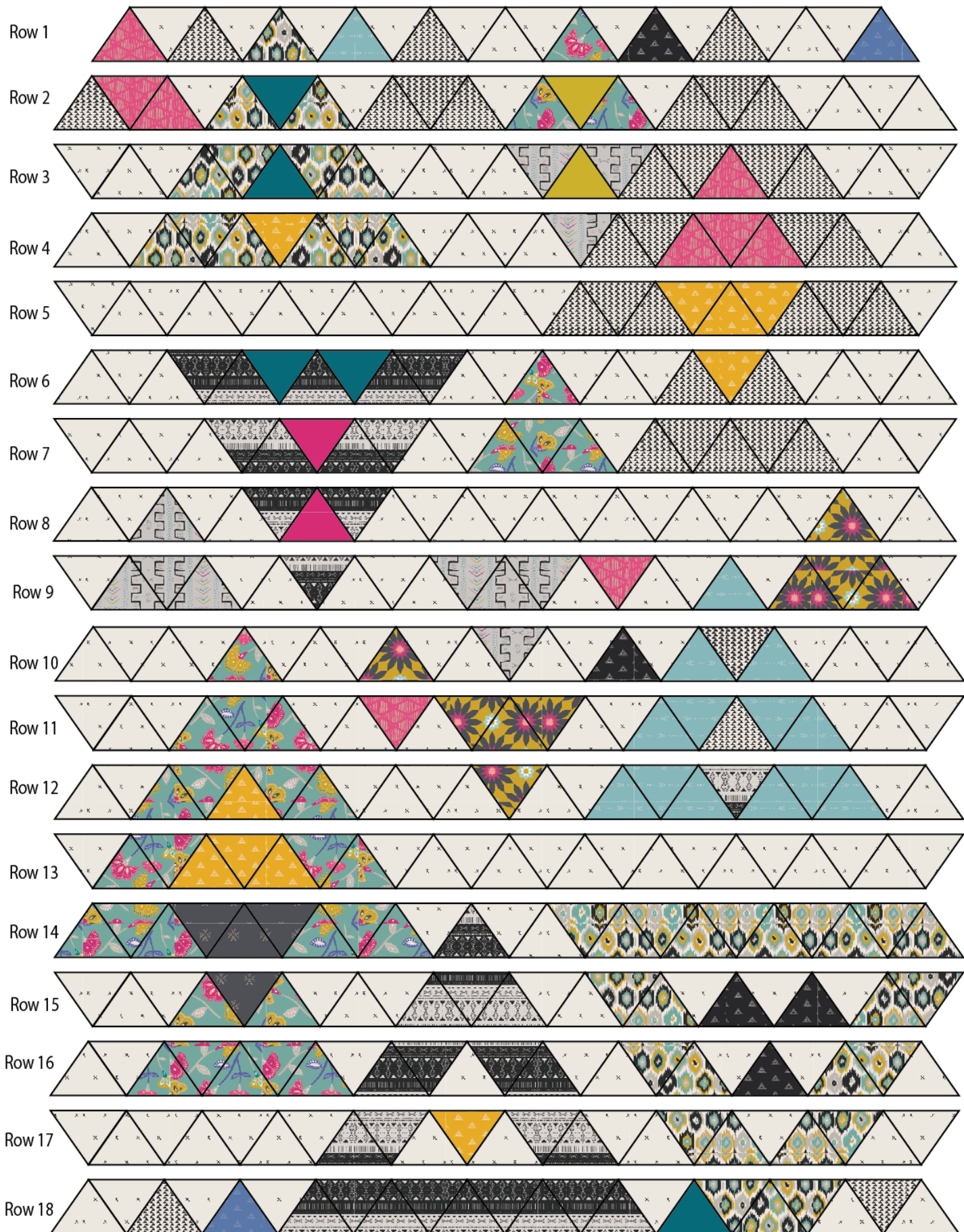


DIAGRAM 1

- Trim your quilt top to a 70 ½" x 90 ½" as in Diagram below

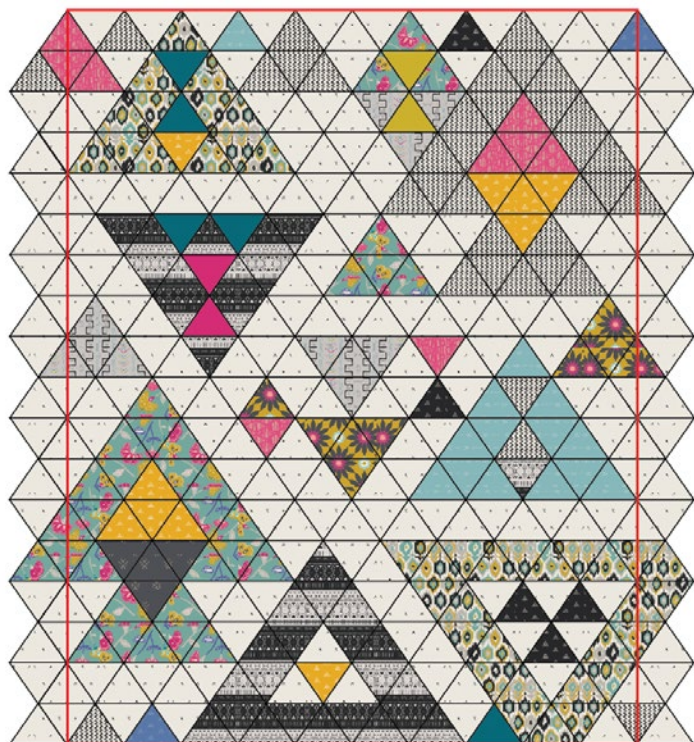


DIAGRAM 2

## QUILT ASSEMBLY

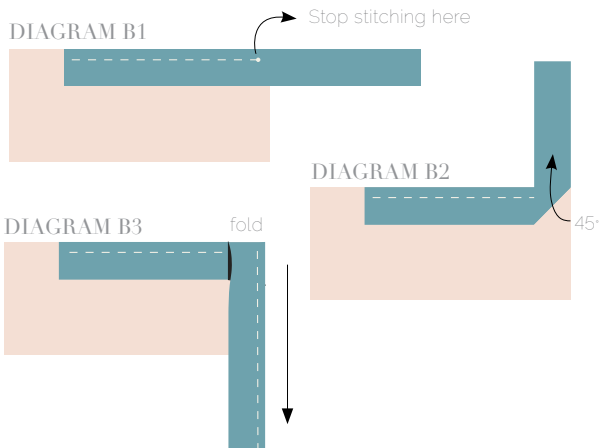
*Sew rights sides together.*

- Place BACKING FABRIC on a large surface wrong side up. Stretch it with masking tape against that surface.
- Place BATTING on top of backing fabric.
- Place TOP on top of the batting with right side facing up. Smooth away wrinkles using your hands.
- Pin all layers together and baste with basting thread, using long stitches. You can also use safety pins to join the layers.
- Machine or hand quilt starting at the center and working towards the corners. Remember that quilting motifs are a matter of personal preference. Have fun choosing yours!
- After you finished, trim excess of any fabric or batting, squaring the quilt to proceed to bind it.

## BINDING

*Sew rights sides together.*

- Cut enough strips 1 ½" wide by the width of the fabric **C** to make a final strip 330" long. Start sewing the binding strip in the middle of one of the sides of the quilt, placing the strip right side down and leaving an approximated 5" tail. Sew with ¼" seam allowance (using straight stitch), aligning the strip's raw edge with the quilt top's raw edge.
- Stop stitching ¼" before the edge of the quilt (**DIAGRAM B 1**). Clip the threads. Remove the quilt from under the machine presser foot. Fold the strip in a motion of 45° and upward, pressing with your fingers (**DIAGRAM B 2**). Hold this fold with your finger, bring the strip down in line with the next edge, making a horizontal fold that aligns with the top edge of the quilt (**DIAGRAM B 3**). Start sewing at ¼" of the border, stitching all the layers. Do the same in the four corners of the quilt.
- Stop stitching before you reach the last 5 or 6 inches. Cut the threads and remove the quilt from under the machine presser foot. Lay the loose ends of the binding flat along the quilt edge, folding the ends back on themselves where they meet. Press them together to form a crease. Using this crease as the stitching line, sew the two open ends of the binding with right sides together (you can help yourself marking with a pencil if the crease is difficult to see).
- Trim seam to ¼" and press open. Complete the sewing. Turn binding to back of the quilt, turn raw edge inside and stitch by hand using blind stitch.







[artgalleryfabrics.com](http://artgalleryfabrics.com)

NOTE: While all possible care has been taken to ensure the accuracy of this pattern, We are not responsible for printing errors or the way in which individual work varies.

Please read instructions carefully before starting the construction of this quilt. If desired, wash and iron your fabrics before starting to cut.

© 2018 Courtesy of Art Gallery Quilts LLC. All Rights Reserved.

