

by AGF

XXXXXXXXXXXXXXXXXXXXXXXXXXXX

Cuddles

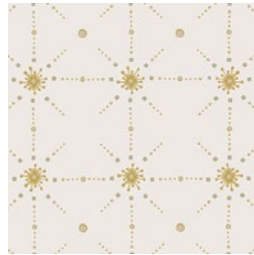


Sparkler FUSION

FABRICS DESIGNED BY AGFstudio



FUS-SK-1303
EVERLASTING BLOOMS SPARKLER



FUS-SK-1304
FROM WITHIN SPARKLER



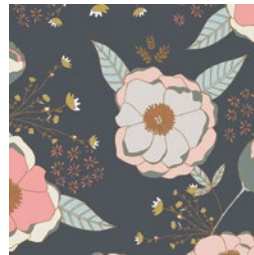
FUS-SK-1308
STARBRIGHT SPARKLER



FUS-SK-1306
TROUVILLE ROUTES SPARKLER



FUS-SK-1305
PINETREE SPARKLER



FUS-SK-1300
SPRINKLED PEONIES SPARKLER



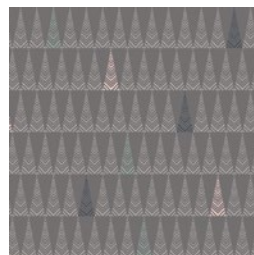
FUS-SK-1301
LITEN DITSY SPARKLER



FUS-SK-1307
CHADS SPARKLER



FUS-SK-1309
DOILAND GLOSS SPARKLER



FUS-SK-1302
TREE FARM SPARKLER



Cuddles

FINISHED SIZE | 39" x 39"

FABRIC REQUIREMENTS

Fabric **A** FUS-SK-1308 1½ yd.
 Fabric **B** PE-472 ¾ yd.
 Fabric **C** FUS-SK-1302 ¼ yd.
 Fabric **D** FUS-SK-1307 ¼ yd.

BACKING FABRIC

FUS-SK-1302- 1¼ yds (*Suggested*)

LINING FABRIC

FUS-SK-1302- ¼ yd (*Included*)

CUTTING DIRECTIONS

¼" seam allowances are included.

- Four (4) 18 ½" x 18 ½" square from Fabric **A**
- Fifty two (52) 3 ½" x 3 ½" square from Fabric **A**
- Fourteen (14) 6 ½" x 3 ½" rectangle from Fabric **B**
- Twelve (12) 6 ½" x 3 ½" rectangle from Fabric **C**

CONSTRUCTION

Sew all rights sides together with ¼" seam allowance.

Flying Geese Construction

- Place a marked 3½" square from Fabric **A** right sides together on the left side of a 4½" x 3½" rectangle from Fabric **B** as shown.
- Stitch on the drawn line. Trim seam allowance to ¼". Press corner open. In the same manner, sew a 3½" square to the remaining corner, trim and press.
- Repeat the same process until you have fourteen (14) **A-B** flying geese pieces.

- Repeat the same method for Fabrics **A-C**.
- You will have a total of twelve (12) Flying Geese

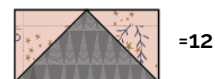
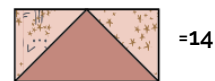


DIAGRAM 1

- Take three (3) **A-B** Flying Geese and Three **A-C** Flying Geese and pair them as the following diagram

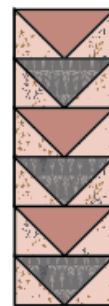


DIAGRAM 2

- Repeat the same process in order to create a total of four (4) Flying Geese strips
- Take two (2) **A-B** Flying Geese and pair them as the following diagram

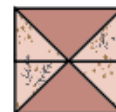


DIAGRAM 3

- Take your 18½" x 18½" squares from Fabric **A** and follow the diagram below in order to assemble your rows together

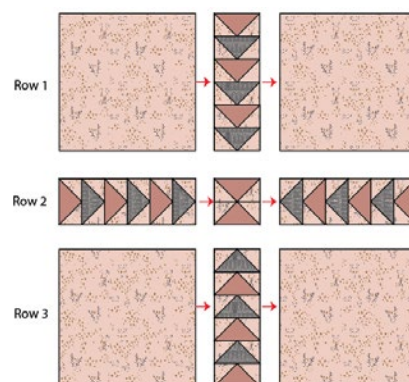


DIAGRAM 4

- Now, follow the diagram below for each row assembly

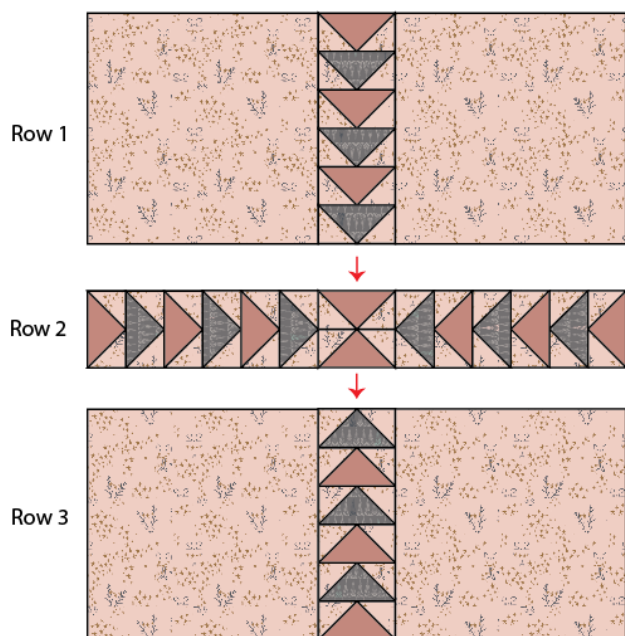


DIAGRAM 5

- Take your piece and measure from the center out, 20". This will be your radius.

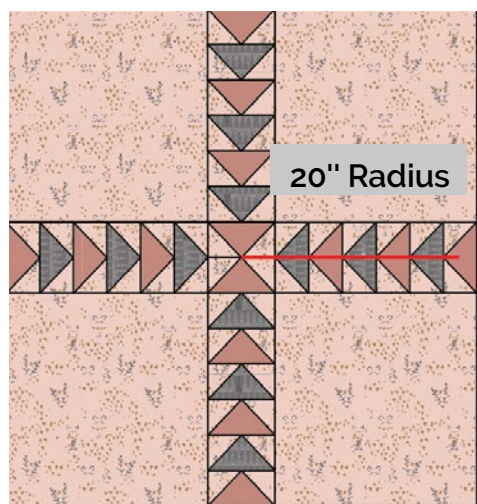


DIAGRAM 6

- Find your easiest way to trace your circle, whether is by a compass, of using your measuring tape and pinning it on the center and mark all around with your erasable pen.
- Make sure after you measure that your circle measures 39½"

XXXXXXXXXXXXXXXXXXXXXXXXXXXXXXXXXXXX

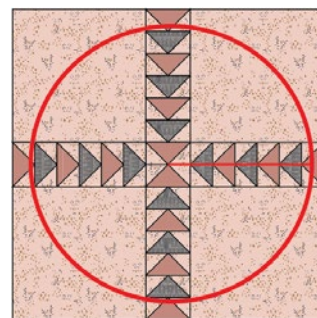


DIAGRAM 7

QUILT ASSEMBLY

Sew rights sides together.

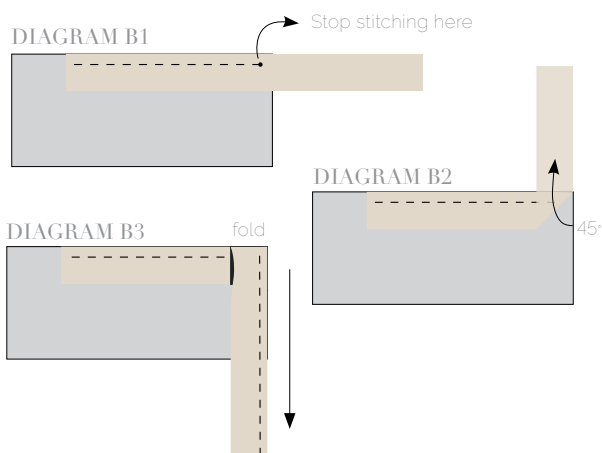
- Place BACKING FABRIC on a large surface wrong side up. Stretch it with masking tape against that surface.
- Place double BATTING on top of backing fabric.
- Place TOP on top of the battings with right side facing up. Smooth away wrinkles using your hands.
- Pin all layers together and baste with basting thread, using long stitches. You can also use safety pins to join the layers.
- Machine or hand quilt starting at the center and working towards the corners. Remember that quilting motifs are a matter of personal preference. Have fun choosing yours!
- After you finished, trim excess of any fabric or batting, squaring the quilt to proceed to bind it.

BINDING

Sew rights sides together.

- Cut strips 1½' wide by the width of the fabric **D** to make a final strip 127" long. Start sewing the binding strip in the middle of one of the sides of the quilt, placing the strip right side down and leaving an approximated 5' tail. Sew with ¼" seam allowance (using straight stitch), aligning the strip's raw edge with the quilt top's raw edge.
- Stop stitching ¼' before the edge of the quilt (**DIAGRAM B 1**). Clip the threads. Remove the quilt from under the machine presser foot. Fold the strip in a motion of 45° and upward, pressing with your fingers (**DIAGRAM B2**). Hold this fold with your finger, bring the strip down in line with the next edge, making a horizontal fold that aligns with the top edge of the quilt (**DIAGRAM B3**). Start sewing at ¼' of the border, stitching all the layers. Do the same in the four corners of the quilt.

- Stop stitching before you reach the last 5 or 6 inches. Cut the threads and remove the quilt from under the machine presser foot. Lay the loose ends of the binding flat along the quilt edge, folding the ends back on themselves where they meet. Press them together to form a crease. Using this crease as the stitching line, sew the two open ends of the binding with right sides together (you can help yourself marking with a pencil if the crease is difficult to see).
- Trim seam to $\frac{1}{4}$ " and press open. Complete the sewing. Turn binding to back of the quilt, turn raw edge inside and stitch by hand using blind stitch.



artgalleryfabrics.com

NOTE: While all possible care has been taken to ensure the accuracy of this pattern, We are not responsible for printing errors or the way in which individual work varies. Please read instructions carefully before starting the construction of this quilt. If desired, wash and iron your fabrics before starting to cut.

© 2018 Courtesy of Art Gallery Quilts LLC. All Rights Reserved.