

X
X
X
X
X
X
X
X
X
X
X
X



× × × × × × × × × × × × × × × × × × ×

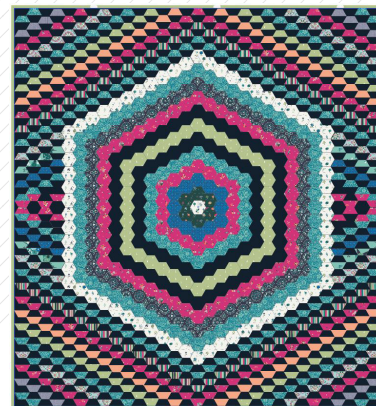
TRANSCENDENCE



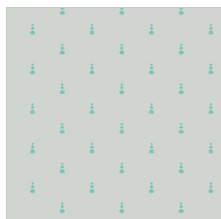
QUILT DESIGNED BY AGF STUDIO

AGFstudio

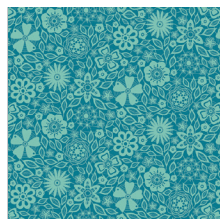
loved to PIECES



FABRICS DESIGNED BY MATHEW BOUDREAUX



LPC-1426
TOPIARY FROST



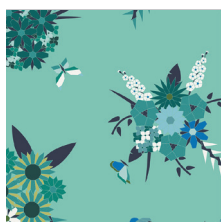
LPC-1424
LACED INFINITY



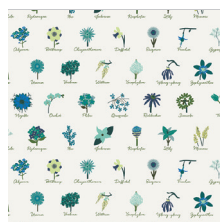
LPC-1423
STRIPED FLOW MARINE



LPC-1422
REAP AND SEW AZUL



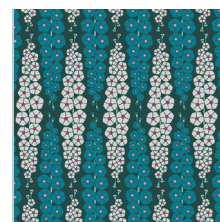
LPC-1421
PIECED BUNCHES COOL



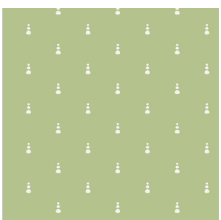
LPC-1420
ANTHONEM SERENE



LPC-1428
MANDALA DROPS MIDNIGHT



LPC-1427
GLADIOLUMNS INBLUEM



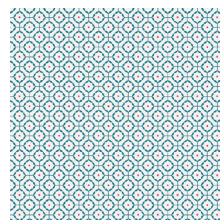
LPC-2426
TOPIARY FERN



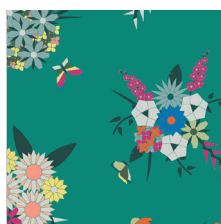
LPC-2425
EFFLORESCENT FUSCHIA



LPC-2423
STRIPED FLOW RAINBOW



LPC-2422
REAP AND SEW LIGHT



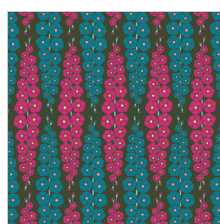
LPC-2421
PIECED BUNCHES WILD



LPC-2420
ANTHONEM FESTIVE



LPC-2428
MANDALA DROPS IRIS



LPC-2427
GLADIOLUMNS PINKBLUEM



FEEL THE DIFFERENCE © 2018 Courtesy of Art Gallery Quilts LLC. All Rights Reserved.

TRANSCENDENCE



FINISHED SIZE 78.5" x 87"

FABRIC REQUIREMENTS

Fabric A	LPC-1424	1 ⁵ / ₈ yd.
Fabric B	DEN-S 2004	¹ / ₆ yd.
Fabric C	LPC-2425	1 ¹ / ₄ yd.
Fabric D	LPC-2428	¹ / ₃ yd.
Fabric E	LPC-2426	⁷ / ₈ yd.
Fabric F	PE-426	³ / ₈ yd.
Fabric G	LPC-2423	¹ / ₂ yd.
Fabric H	LPC-1420	³ / ₄ yd.
Fabric I	LPC-1428	⁵ / ₈ Yd
Fabric J	LPC-1422	¹ / ₃ Yd.
Fabric K	LPC-2420	¹ / ₈ yd.
Fabric L	LPC-1421	¹ / ₆ Yd.
Fabric M	PE-428	3 ³ / ₄ Yd.

BACKING FABRIC

LPC-2423 (Fabric G) 6 yds. *(Suggested)*

BINDING FABRIC

LPC-2426- (Fabric E) *(included)*

CUTTING DIRECTIONS

¹/₄" seam allowances are included.

WOF means width of fabric.

- Two hundred and ninety four (294) templates from Fabric **A**
- Sixteen (16) templates from fabric **B**
- Two hundred and thirty four (234) templates from fabric **C**
- Forty eight (48) templates from fabric **D**
- Seventy Two (72) templates from fabric **E**
- Fifty six (56) templates from fabric **F**
- Sixty two (62) templates from fabric **G**
- One hundred and thirty two (132) templates from fabric **H**
- One hundred and wight (108) templates from fabric **I**

XX

- One hundred and thirty two (132) templates from fabric **J**
- One hundred and wight (108) templates from fabric **K**
- Sixteen (16) templates from fabric **L**
- Six hundred and fifty eight (658) templates from fabric **M**

CONSTRUCTION

Sew all rights sides together with ¹/₄" seam allowance.

- The Quilt top is made out of **two equal sections**
Each section consist of twenty nine (29) rows
Each row is made out of thirty one (31) half hexies. (both sections are exactly the same)
- Alternate the direction of each piece following diagram below,

--Sew



DIAGRAM 1

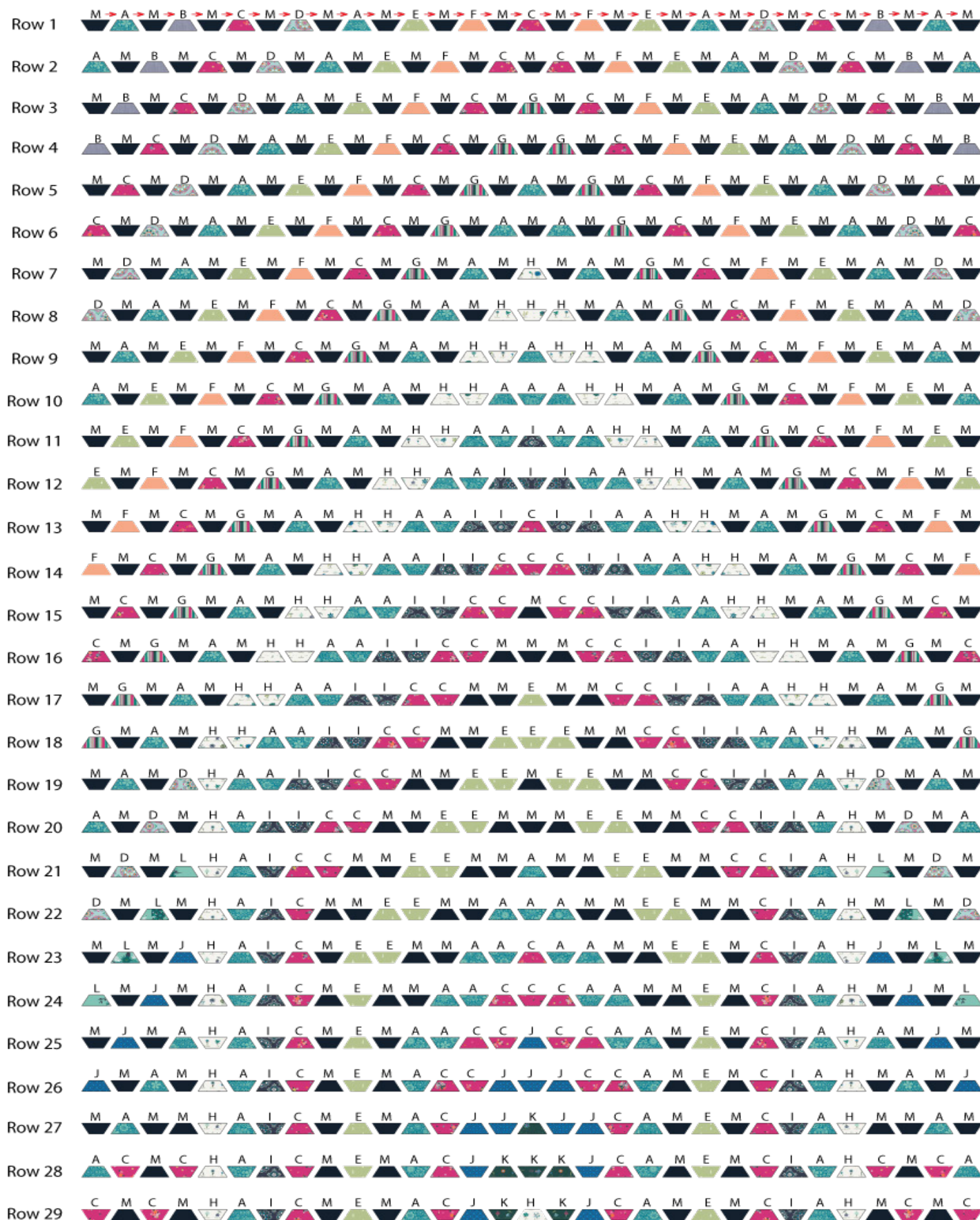


DIAGRAM 2

ASSEMBLING THE TOP

- Follow diagram below for each row assembly

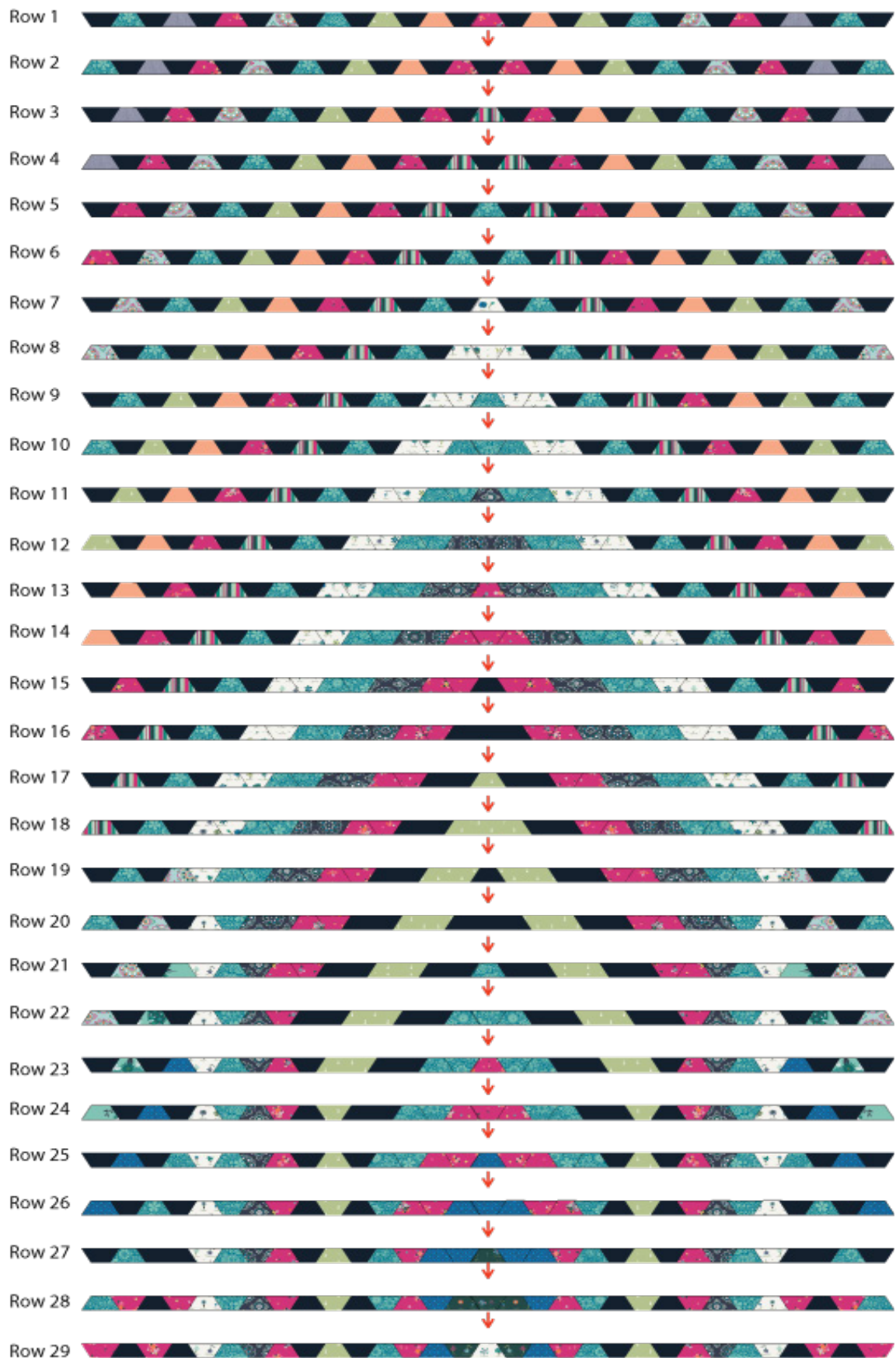
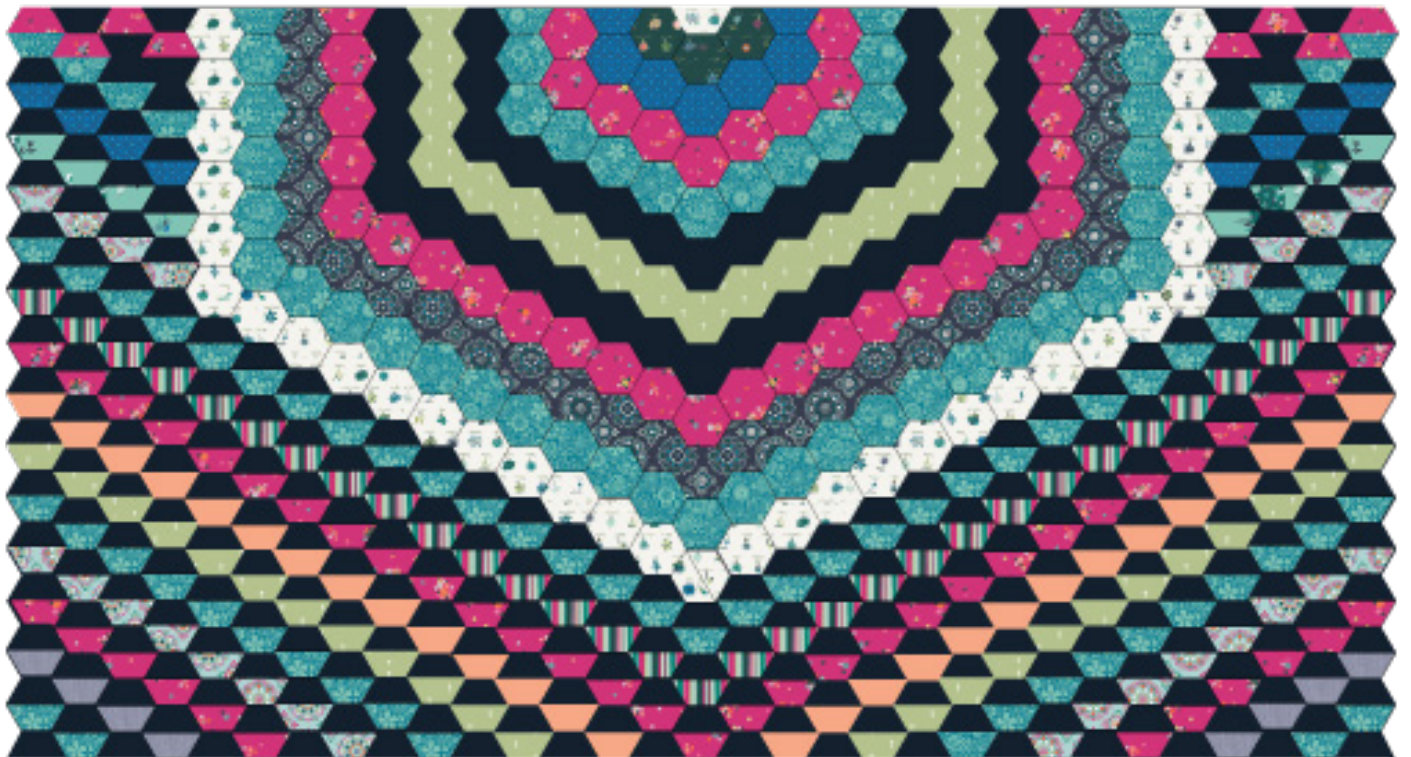


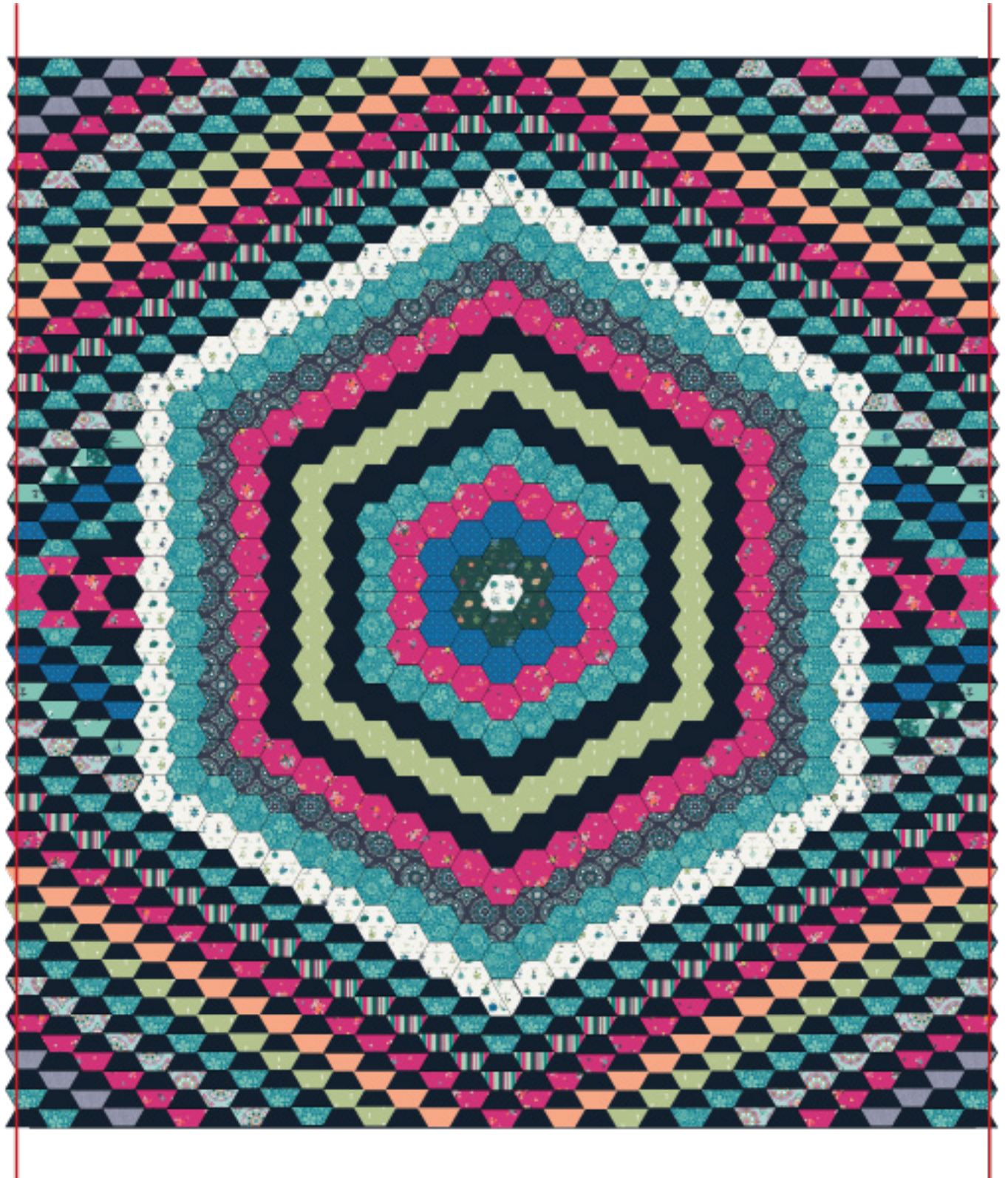
DIAGRAM 3

-
- A vibrant, multi-colored quilted pattern. The central focus is a circular medallion composed of concentric rings of geometric shapes, primarily hexagons and triangles, in shades of pink, blue, green, and black. This central design is surrounded by a wide border made of repeating blocks of triangles and hexagons in various colors and patterns, including solid colors, stripes, and floral motifs. The overall effect is a complex, symmetrical, and highly detailed geometric composition.



artgalleryfabrics.com

- Trim the sides of the quilt to a 78.5" x 87"

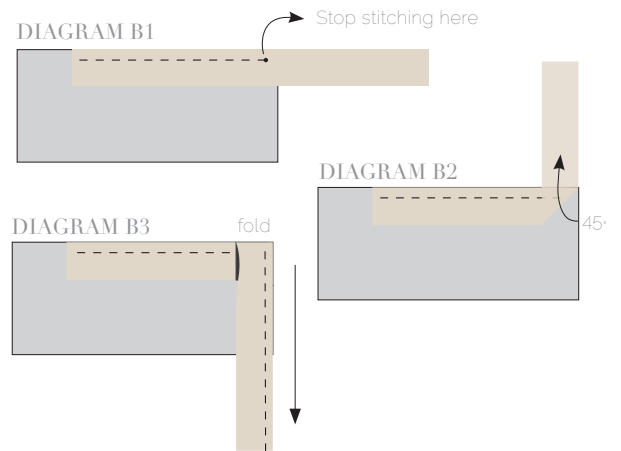


QUILT ASSEMBLY

Sew rights sides together.

- Place BACKING FABRIC on a large surface wrong side up. Stretch it with masking tape against that surface.
- Place BATTING on top of backing fabric.
- Place TOP on top of the batting with right side facing up. Smooth away wrinkles using your hands.
- Pin all layers together and baste with basting thread, using long stitches. You can also use safety pins to join the layers.
- Machine or hand quilt starting at the center and working towards the corners. Remember that quilting motifs are a matter of personal preference. Have fun choosing yours!
- After you finished, trim excess of any fabric or batting, squaring the quilt to proceed to bind it.

- Stop stitching before you reach the last 5 or 6 inches. Cut the threads and remove the quilt from under the machine presser foot. Lay the loose ends of the binding flat along the quilt edge, folding the ends back on themselves where they meet. Press them together to form a crease. Using this crease as the stitching line, sew the two open ends of the binding with right sides together (you can help yourself marking with a pencil if the crease is difficult to see).
- Trim seam to $\frac{1}{4}$ " and press open. Complete the sewing. Turn binding to back of the quilt, turn raw edge inside and stitch by hand using blind stitch.



BINDING

Sew rights sides together.

- Cut 9 strips $1\frac{1}{2}$ " wide by the width of the fabric **E** to make a final strip 344" long. Start sewing the binding strip in the middle of one of the sides of the quilt, placing the strip right side down and leaving an approximated 5" tail. Sew with $\frac{1}{4}$ " seam allowance (using straight stitch), aligning the strip's raw edge with the quilt top's raw edge.
- Stop stitching $\frac{1}{4}$ " before the edge of the quilt (**DIAGRAM B 1**). Clip the threads. Remove the quilt from under the machine presser foot. Fold the strip in a motion of 45° and upward, pressing with your fingers (**DIAGRAM B2**). Hold this fold with your finger, bring the strip down in line with the next edge, making a horizontal fold that aligns with the top edge of the quilt (**DIAGRAM B3**). Start sewing at $\frac{1}{4}$ " of the border, stitching all the layers. Do the same in the four corners of the quilt.



artgalleryfabrics.com

NOTE: While all possible care has been taken to ensure the accuracy of this pattern, We are not responsible for printing errors or the way in which individual work varies. Please read instructions carefully before starting the construction of this quilt. If desired, wash and iron your fabrics before starting to cut.

© 2018 Courtesy of Art Gallery Quilts LLC. All Rights Reserved.

