

HexieDiamond



FREE PATTERN

XXXXXXXXXXXXXXXXXXXXXXXXXXXX

ANGLES

A DIVISION OF AGF



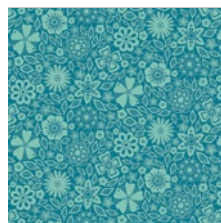
loved to PIECES

FABRICS DESIGNED BY MATHEW BOUDREAUX

BLUE BINDED



LPC-1426
TOPIARY FROST



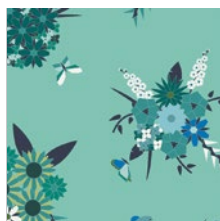
LPC-1424
LACED INFINITY



LPC-1423
STRIPED FLOW MARINE



LPC-1422
REAP AND SEW AZUL



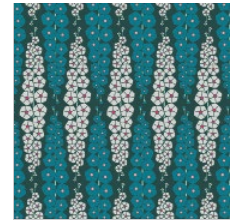
LPC-1421
PIECED BUNCHES COOL



LPC-1420
ANTHONEM SERENE



LPC-1428
MANDALA DROPS MIDNIGHT



LPC-1427
GLADIOLUMNS INBLUEM

FUSED HUES



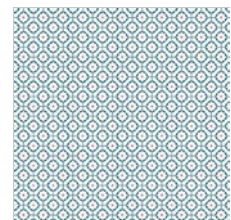
LPC-2426
TOPIARY FERN



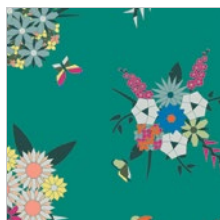
LPC-2425
EFFLORESCENT FUSCHIA



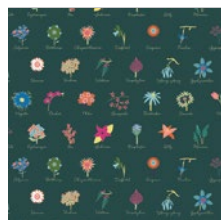
LPC-2423
STRIPED FLOW RAINBOW



LPC-2422
REAP AND SEW LIGHT



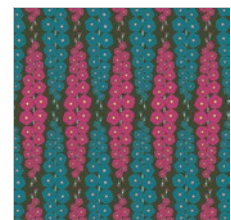
LPC-2421
PIECED BUNCHES WILD



LPC-2420
ANTHONEM FESTIVE



LPC-2428
MANDALA DROPS IRIS



LPC-2427
GLADIOLUMNS PINKBLUEM



HexieDiamond

FINISHED SIZE | 26½" x 28½"

FABRIC REQUIREMENTS

Fabric A	LPC-2423	⅛ yd
Fabric B	LPC-2422	⅛ yd
Fabric C	PE-450	⅛ yd
Fabric D	LPC-2425	⅛ yd
Fabric E	LPC-2426	⅛ yd
Fabric F	LPC-2427	⅛ yd
Fabric G	LPC-2421	⅜ yd
Fabric H	PE-449	⅓ yd
Fabric I	PE-418	⅛ yd
Fabric J	LPC-1423	⅛ yd
Fabric K	LPC-1420	⅛ yd
Fabric L	LPC-1424	⅛ yd
Fabric M	LPC-1426	⅛ yd
Fabric N	LPC-1421	⅛ yd
Fabric O	PE-464	⅛ yd
Fabric P	PE-408	1 ⅙ yd
Fabric Q	PE-467	⅛ yd
Fabric R	PE-438	⅛ yd
Fabric S	PE-423	⅛ yd

BACKING FABRIC
PE-408 1 yd (Suggested)

BINDING FABRIC
LPC-2421 (Included)

CUTTING DIRECTIONS

¼" seam allowances are included.
WOF means width of fabric.

- One (1) Triangle Template from Fabrics **A, J**
- One (1) Template 2 from Fabrics **B, D, F, G, H, I, J, K, L, M, N, O**
- Two (2) Template 2 from Fabric **C**
- Two (2) ⅞" x 16 ¼" strip from Fabric **H**
- One (1) ⅞" x 16 ¼" strip from Fabrics **C, I, O, Q, R, S**
- One (1) 34" x 34" square from Fabric **P**

CONSTRUCTION

Sew all rights sides together with ¼" seam allowance.

- Start by pairing Triangle Template from Fabric **A** with Template 2 from Fabric **B**.

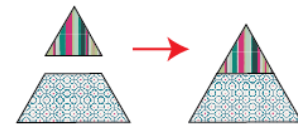


DIAGRAM 1

- Now, pair Template 2 from Fabric **F** with Template 2 from Fabric **A**. Then rotate the piece as diagram below.

Note: make sure you cut your Template 2 from Fabric A placing your template vertical so your stripe print becomes diagonal when sewing.



DIAGRAM 2

- Now, with your **F-A** hexie piece, pair one Template 2 piece from Fabric **E** on the left side, and one Template 2 from fabric **H** on the right side.

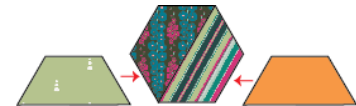


DIAGRAM 3

- Then, take one Template 2 piece from Fabric **D** and place it on top of fabric **E** Template 2 piece as diagram below and one Template 2 piece from Fabric **G** on top of Fabric **H** as diagram below.

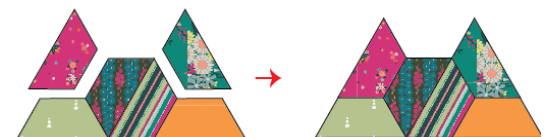


DIAGRAM 4

- Now, take Template 2 from Fabric **C** and place it on top of **F-A** piece as diagram below.



DIAGRAM 5

- Then, place your **A-B** Triangle piece and place it on top.



DIAGRAM 6

- Repeating the same instructions as above, assemble your second triangle with fabrics templates 1 and 2: **C, I, J, K, L, M, N, O**

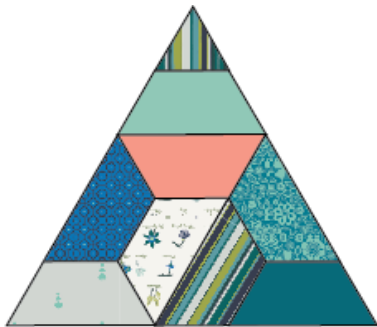


DIAGRAM 7

- Now, Pair both triangle hexie pieces as diagram below



DIAGRAM 8

- Now, apply you piece on your 34" x 34" square from Fabric P.
- Find your center and in order to have a clean applique, without rough edges, fold your edges inside, pin the piece around and make a top stitch as close to the edge as possible.
- Quilt your piece as desired

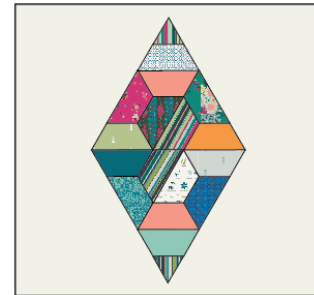


DIAGRAM 9

- Now take one strip of Fabric **C** and trim the edge at a 60 degree angle on one side.
- Repeat the same for Fabrics **H, O, I, Q, R, S** strips



DIAGRAM 10

- Now, take Fabric **C** and **H** strip and pair them together as diagram below.



DIAGRAM 12

- Repeat the same process for strips **H-R, O-S, Q-I**
- Now, place your color strip parallel to your diamond as diagram below.
- Measure about 1 1/2" from the diamond,
- Measure 1" from your first strip and place your other strip.



DIAGRAM 13

- Now, trim your piece to an octagon shape, following the diagram below as your guide.

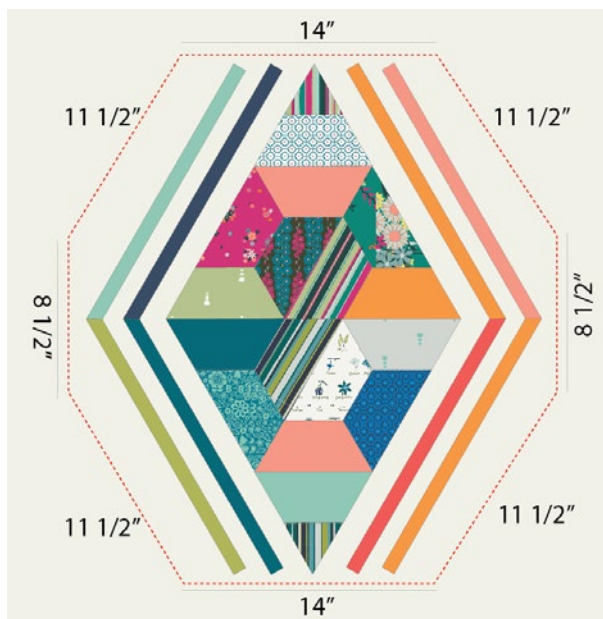


DIAGRAM 14

QUILT ASSEMBLY

Sew rights sides together.

- Place BACKING FABRIC on a large surface wrong side up. Stretch it with masking tape against that surface.
- Place BATTING on top of backing fabric.
- Place TOP on top of the batting with right side facing up. Smooth away wrinkles using your hands.
- Pin all layers together and baste with basting thread, using long stitches. You can also use safety pins to join the layers.
- Machine or hand quilt starting at the center and working towards the corners. Remember that quilting motifs are a matter of personal preference. Have fun choosing yours!
- After you finished, trim excess of any fabric or batting, squaring the tablemat to proceed to bind it.

BINDING

Sew rights sides together.

- Cut enough strips $1\frac{1}{2}$ ' wide by the width of the binding fabric. Start sewing the binding strip in the middle of one of the sides of the table mat, placing the strip right side down and leaving an approximated 5' tail. Sew with $\frac{1}{4}$ ' seam allowance (using straight stitch), aligning the strip's raw edge with the quilt top's raw edge.
- Stop stitching $\frac{1}{4}$ ' before the edge of the quilt (DIAGRAM B 1). Clip the threads. Remove the table mat from under the machine presser foot. Fold the strip in a motion of 45° and upward, pressing with your fingers (DIAGRAM B2). Hold this fold with your finger, bring the strip down in line with the next edge, making a horizontal fold that aligns with the top edge of the quilt (DIAGRAM B3). Start sewing at $\frac{1}{4}$ ' of the border, stitching all the layers. Do the same in the four corners of the quilt.



artgalleryfabrics.com

NOTE: While all possible care has been taken to ensure the accuracy of this pattern, We are not responsible for printing errors or the way in which individual work varies. Please read instructions carefully before starting the construction of this quilt. If desired, wash and iron your fabrics before starting to cut.

© 2018 Courtesy of Art Gallery Quilts LLC. All Rights Reserved.

