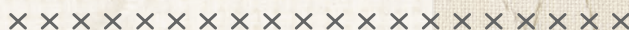




Puri



FREE PATTERN



XX



Maureen
Cracknell

BAG DESIGNED BY AGF STUDIO



FlowerChild

FABRICS DESIGNED BY MAUREEN CRACKNELL

WILD HEART



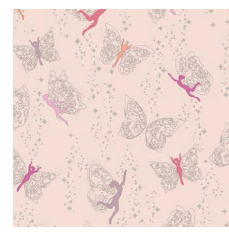
FCD-67150
FLOWERY CHANT WILD



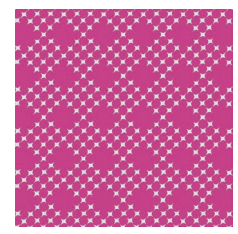
FCD-67151
SPRINKLED PETALS MOON



FCD-67152
LUSH CANOPY CLOUD



FCD-67153
PRAIRIE FAIRIES DAY



FCD-67154
PIXIE DUST GLOW



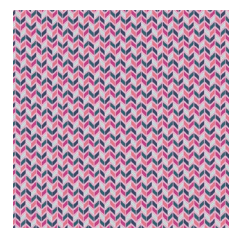
FCD-67155
FLICKER & FADE BLUE



FCD-67156
BLOOMING GROUND LUSCIOUS



FCD-67157
COSMIC SISTER IMPRINT

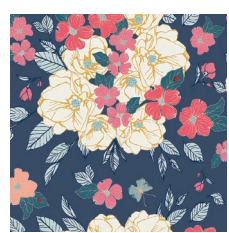


FCD-67158
BRAIDED PATH SUBLIME



FCD-67159
ENCHANTED MEADOW

GENTLE HEART



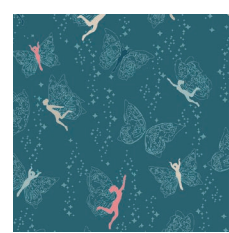
FCD-77150
FLOWERY CHANT GENTLE



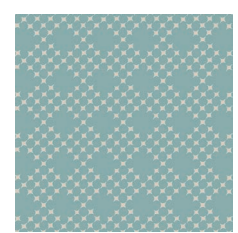
FCD-77151
SPRINKLED PETALS SUN



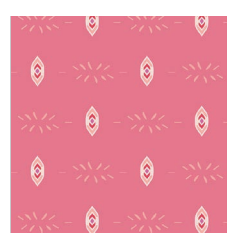
FCD-77152
LUSH CANOPY SKY



FCD-77153
PRAIRIE FAIRIES NIGHT



FCD-77154
PIXIE DUST SPARK



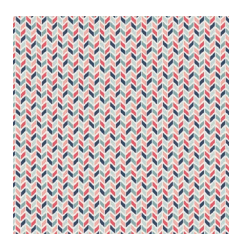
FCD-77155
FLICKER & FADE BLUSH



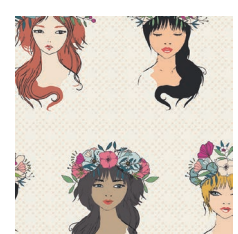
FCD-77156
BLOOMING GROUND LUSTROUS



FCD-77157
COSMIC SISTER IMPRESS



FCD-77158
BRAIDED PATH SUBTLE



FCD-77160
SISTERHOOD





FINISHED SIZE | 15' x 12' x 9'

FABRIC REQUIREMENTS

Fabric A	FCD-77150	3/8 yd.
Fabric B	FCD-67157	3/8 yd.
Fabric C	FCD-67151	3/8 yd.
Fabric D	FCD-67158	3/8 yd.
Fabric E	DEN-S-2008	1/3 yd.
Fabric F	DEN-L-4000	1/3 yd.
Fusible Interfacing		3/4 yd.
Zipper (Teeth Measuring)		7 1/2 "
BACKING FABRIC		
FCD-67158 (Included)		
BINDING FABRIC		
FCD-67151 (included)		

CUTTING DIRECTIONS

1/4" seam allowances are included.
WOF means width of fabric.

Fabric **A**

One (1) 16' x 13' rectangle.
Two (2) 4' x 13' rectangles.

Fabric **B**

One (1) 11' x 14' rectangle.
One (1) 10' x 22' rectangle.
Three (3) WOF x 1 1/2' strips.

Fabric **C**

One (1) WOF x 1' strip.
Three (3) WOF x 1 1/2' strips.
One (1) 2' x 2' square.

Fabric **D**

Two (2) 27' x 3' rectangles.
One (1) 10' x 13' rectangle.
Two (2) 5' x 14' rectangles.
One (1) 18' x 15' rectangle.
One (1) WOF x 11' rectangle.



Fabric **E**

Two (2) WOF x 3 3/4' strips.
One (1) WOF x 3' strip.
Two (2) 27' x 2' strips.
One (1) 33' x 10' rectangle.
Five (5) 5' x 5' squares.

Fabric **F**

Two (2) WOF x 1 1/2' strips.
Five (5) 3 1/2' x 3 1/2' squares.
One (1) 6 1/2' x 6 1/2' square.

Interfacing:

Two (2) 27' x 2' strips.
One (1) 10' x 22' rectangle.

CONSTRUCTION

Sew all right sides together with 1/4" seam allowance.

Front Panel

- Take one (1) 16' x 13' rectangle from fabric **A**, one (1) 6 1/2' x 6 1/2' square from fabric **F**, one (1) 5' x 5' square from fabric **E**, one (1) 3 1/2' x 3 1/2' square from fabric **F** and one (1) 2' x 2' square from fabric **C**.
- Do Corner Square Triangles:
- Align the 6 1/2' x 6 1/2' square from fabric **F** to the lower left corner to the rectangle from fabric **A** making sure they are face to face.
- Draw a line on the diagonal, and stitch and 1/4' from the line.
- Trim the excess, open and press.
- For fabric placement and attachment follow Diagram 1.
- Do corner square triangles with the squares from fabrics **E**, **F**, and **C**, in the given order and in the same corner.
- Once you have your front piece pieced, layer it with batting and one (1) 18' x 15' rectangle from fabric **D** and quilt it as you like.
- Trim it so it measures 15 1/2' x 12 1/2'.

Sides of Back Panel

- Take four (4) 4' x 13' rectangles from fabric **A**, four (4) 5' x 5' squares from fabric **E** and four (4) 3 1/2' x 3 1/2' squares from fabric **F**.
- Do Corner Square Tirangles: **E** > **F** on each extreme of fabric **A**.
- For fabric placement and attachment follow Diagram 2.
- Layer your pieced pieces with batting and two (2) 5' x 14' rectangles from fabric **D**, and quilt them as you like.
- Trim each piece to 3 1/2' x 13'.

XXXXXXXXXXXXXXXXXXXXXXXXXXXX

Front Panel

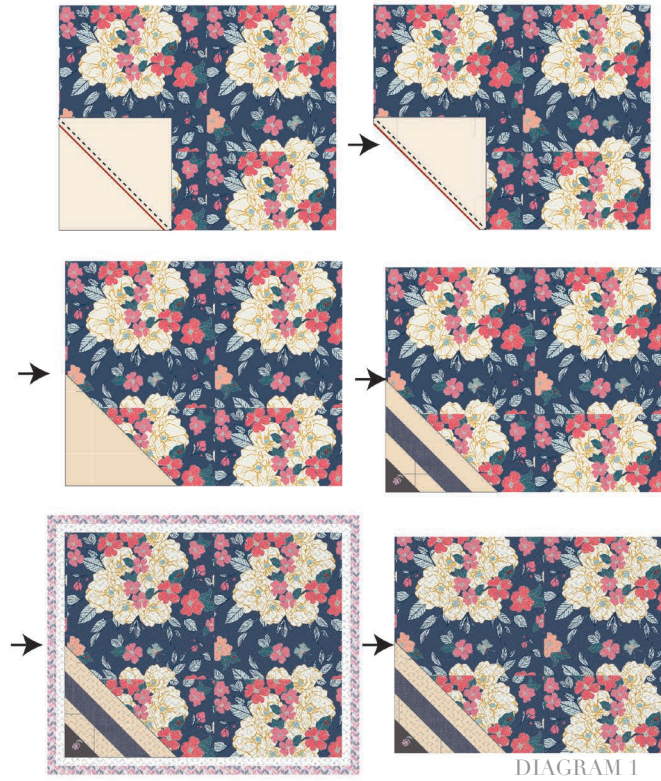


DIAGRAM 1

Sides of Back Panel



DIAGRAM 2

Straps

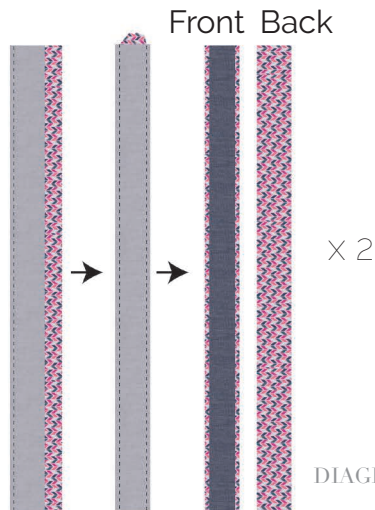


DIAGRAM 3

Straps:

- Take two (2) 27' x 3' strips from fabric **D**, two (2) 27' x 2' strips from fabric **E**, and two (2) 27' x 2' strips from fusible interfacing.
- Fuse the strips of fusible interfacing to the wrong side of the strips from fabric **E**.
- Align each strip of fabric **D** to a strip of fabric **E** to one side and face to face.
- Stitch and $\frac{1}{4}$ ' from the edge.
- Align the other sides and stitch them at $\frac{1}{4}$ '.
- Turn every strip to the right side. You will see only fabric **D** on the back side, and fabric **D** and fabric **E** on the front side.
- For fabric placement and attachment follow Diagram 3.

Sides and Bottom Panel

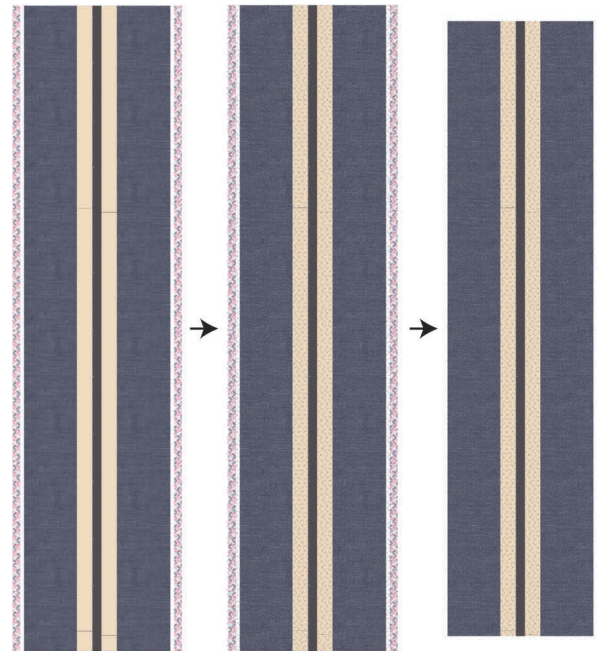


DIAGRAM 4

Inside Pocket

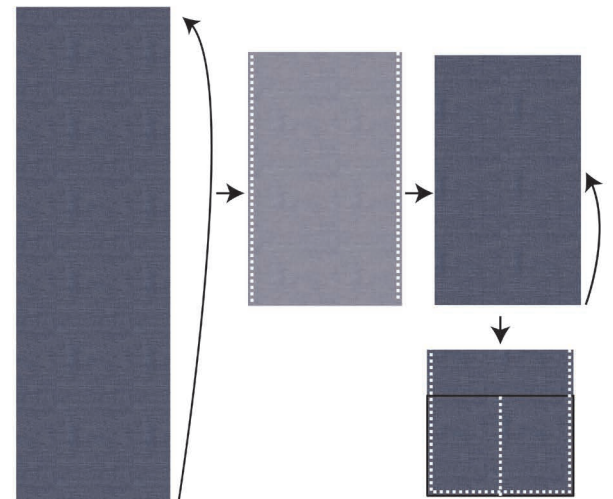


DIAGRAM 5

Sides and Bottom Panel:

- Take one (1) WOF x 1' strip from fabric **C**, one (1) WOF x 11' strip from fabric **D**, two (2) WOF x 3¾' strips from fabric **E**, and two (2) WOF x 1½' strip from fabric **F**.
- Join **E > F > C > F > E**.
- Layer the pieced strip with batting and one (1) WOF x 11' strip from fabric **D**.
- Quilt it as you like and trim it to 40' x 9½'.
- For fabric placement and attachment follow Diagram 4.

Inside Pocket:

- Take one (1) 33' x 10' rectangle from from fabric **E**,
- Fold it in half right sides together and stitch at ¼' from the 16½' edges.
- Turn it to the right side and press.
- Fold it at 6½' from the bottom and stitch on the sides.
- Stitch a center line to create a division for two pockets.
- For fabric placement and attachment follow Diagram 5.

Welt Zipper Pocket

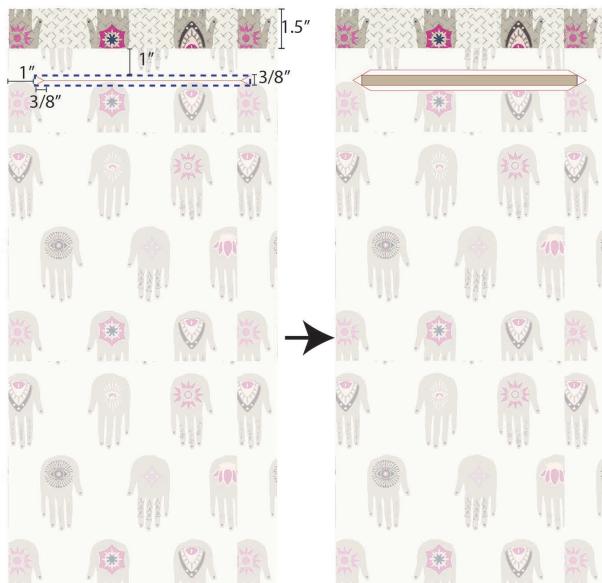


DIAGRAM 6

Welt Zipper Pocket:

- Take one 11' x 14' rectangle from fabric **B**, one (1) 10' x 22' rectangle from fabric **B**, one (1) 10' x 22' rectangle from fusible interfacing, and the zipper.
- Layer the 11' x 14' rectangle with batting and quilt it as you prefer.
- Fuse the 10' x 22' fusible interfacing to the wrong side of the 10' x 22' rectangle from fabric **B**.
- On the back of the fused rectangle, draw 8' x ¾' rectangle 1' below the top edge.
- Draw a line in the center of the rectangle.
- Mark a point ¾' from the side edges of the rectangle on the center line.
- Draw lines from the marked point to the corners of the rectangle.
- Place the fused fabric face to face to the quilted rectangle 1½' below the top edge.
- Stitch both pieces together following the 8' x ¾' rectangle line.

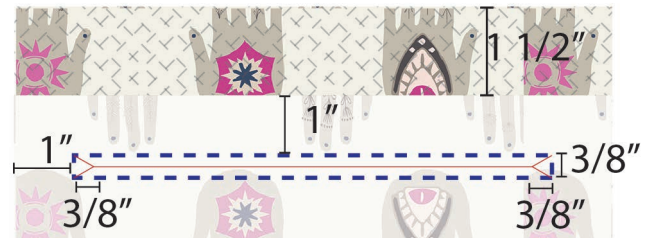


DIAGRAM 7

- Carefully with your scissors cut along the red line.
- You will have four ears.

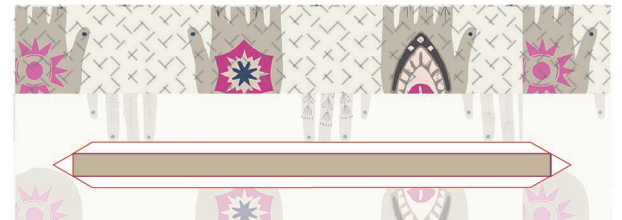


DIAGRAM 8

- Stitch the top and bottom ears to the fused rectangle as close to the seam as possible.
- Make sure to start after the left corner and to finish before reaching the right corner.



DIAGRAM 9

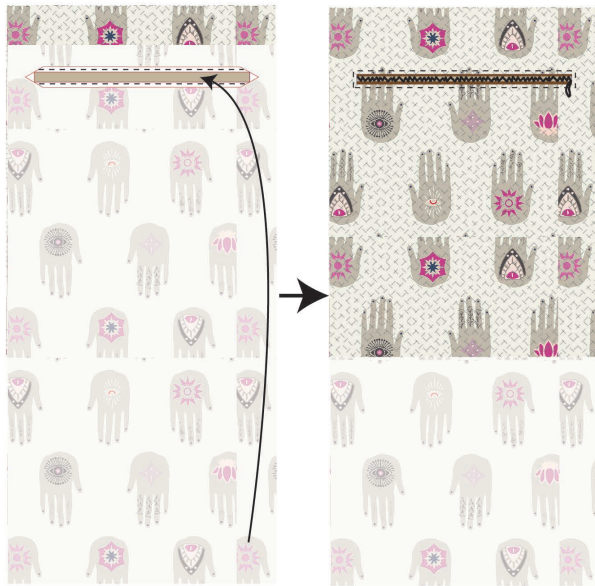


DIAGRAM 10

- Insert the fused piece and the ears through the hole so the right side of the quilted rectangle is in front.
- Take the zipper and sew a stitch at the ends to hold the tape together in place.
- Place the zipper behind the pocket, pin it in place, and stitch around the rectangle.

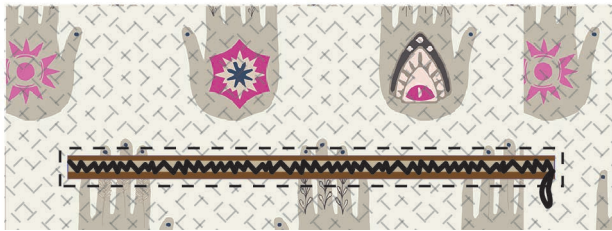


DIAGRAM 11

- Fold the fused rectangle in half and towards the top edge of the quilted rectangle.
- Take one (1) 10" x 13" rectangle from fabric **D** and place it in the back of the pocket.
- If you prefer, baste stitch the pieces together to hold them in place.



DIAGRAM 12

TOTE ASSEMBLY

Sew rights sides together.

- Join the sides of the back panel to the welt zipper pocket.
- Sew the sides and bottom panel around the sides and bottom of the front and back panel.
- For fabric placement and attachment follow Diagram 13.



DIAGRAM 13

- Take three (3) WOF x 1½' strips from fabric **C** and use it as a binding to clean all the inside unfinished seams, except the top as indicated on Diagram 14.
- Take the straps and baste stitch them to the outside of the front and back panel.
- Take the inside pocket and baste stitch it to the inside of the front panel following Diagram 14.
- Take one (1) WOF x 3' strip from fabric **E** and use it to bind the top of the bag and to hold in place the straps and the inside pocket.
- Make a small stitch to hold the straps to the upper part of the bag.



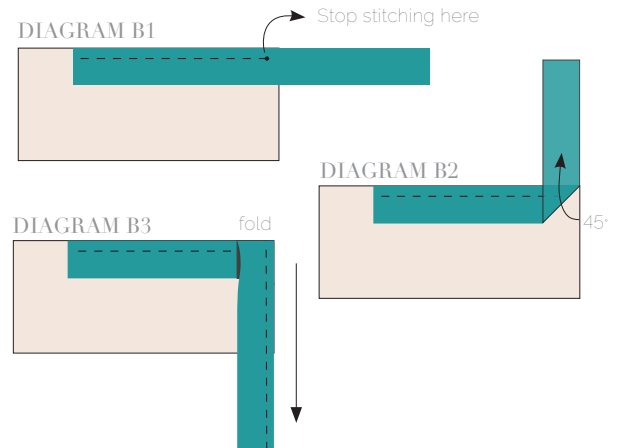
DIAGRAM 14

BINDING

Sew rights sides together.

- Cut enough strips by the width of the binding fabric to make a final strip. Start sewing the binding strip in the middle of one of the sides of the seam, placing the strip right side down. Sew with ¼' seam allowance (using straight stitch), aligning the strip's raw edge with the tote seam's raw edge.
- Stop stitching ¼' before the edge of the tote (**DIAGRAM B 1**). Clip the threads. Remove the tote from under the machine presser foot. Fold the strip in a motion of 45° and upward, pressing with your fingers (**DIAGRAM B 2**). Hold this fold with your finger, bring the strip down in line with the next edge, making a horizontal fold that aligns with the top edge of the tote (**DIAGRAM B 3**). Start sewing at ¼' of the border, stitching all the layers. Do the same all the corners.

- Stop stitching before you reach the last 5 or 6 inches. Cut the threads and remove the tote from under the machine presser foot. Lay the loose ends of the binding flat along the tote edge, folding the ends back on themselves where they meet. Press them together to form a crease. Using this crease as the stitching line, sew the two open ends of the binding with right sides together (you can help yourself marking with a pencil if the crease is difficult to see).
- Trim seam to ¼' and press open. Complete the sewing. Turn binding to back of the tote, turn raw edge inside and stitch by hand using blind stitch.



artgalleryfabrics.com

NOTE: While all possible care has been taken to ensure the accuracy of this pattern, We are not responsible for printing errors or the way in which individual work varies.

Please read instructions carefully before starting the construction of this quilt. If desired, wash and iron your fabrics before starting to cut.