



# MOONLIT CAMP

QUILT DESIGNED BY AGFstudio



## Campsite

FABRICS DESIGNED BY AGF STUDIO



CAP-C-9000  
SNEAKY LITTLE FOXES



CAP-C-9001  
CAMPING STORIES



CAP-C-9002  
WILD GATHERINGS



CAP-C-9003  
DANCING DAISIES



CAP-C-9004  
HEATHER & FEATHERS



CAP-C-9005  
HOPPING HARE



CAP-C-9006  
MIDNIGHT WISHES



CAP-C-9007  
FIREFLIES GLOW



CAP-C-9008  
CAMPFIRE SWEETS



CAP-C-9009  
AMONG THE PINES







- Take two (2) 1" x WOF strips from fabric **D** & **F** and three (3) 1" x WOF from fabric **H**.
- Attach them in the order, **HFDHFDH**.
- Make two (2) strip sets with this combination.

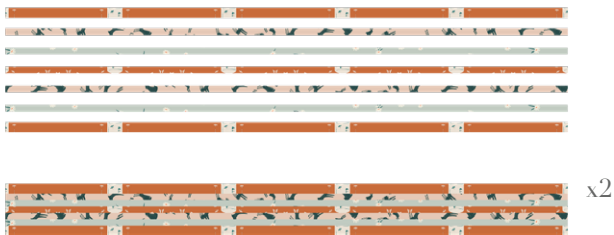


DIAGRAM 9

- Now using the tent template on the last page cut a total of ten (10) following the diagram below.
- You will be able to cut just six (6) templates from each set.



DIAGRAM 10

- Attach the triangle and tent pieces together.



DIAGRAM 11

- Take the ten (10) 10 1/2" squares from fabric **G**, ten (10) moon templates from fabric **D** and ten (10) tents you just have made.
- Appliqué one moon and one tent using Steam-A-Seam paper on top of the fabric **G** square.
- If you are not planning to quilt on top of this block it is recommended to top stitch the moon and tent to hold them in place.
- Make ten (10) in total and set aside.

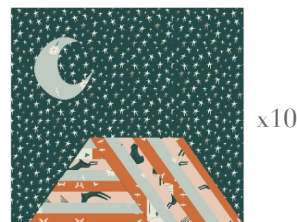


DIAGRAM 12

## ASSEMBLING THE TOP

- In order to construct the quilt top you need to make four columns of five blocks each.
- Alternate the tent blocks with the HST following the cover picture or diagram below for block placement
- Add one 10 1/2" x 2 1/2" strip from fabric **I** in between each block.



- Use the 2 1/2" x WOF strips from fabric **I** to create five 62" strips.
- Attach them in-between the columns alternating the strips and the Columns.









