

X
X
X
X
X
X
X
X
X
X
X
X

A small, handmade, quilted pouch with a yellow polka-dot body and a pink patterned top. The yellow part features a purple rectangular frame with two black curved lines inside, resembling a stylized face or eyes. The pink part has a pattern of small hearts and crescent shapes. A green zipper is visible on the right side, and a pink strap is attached to the bottom.

XXXXXXXXXXXXXXXXXXXXXXXXXXXX

A DIVISION OF AGF

DON TAQUITO

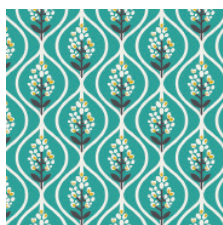
DESIGNED BY AGF STUDIO



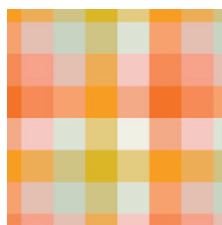
FABRICS DESIGNED BY DANA WILLARD



SUMMER PICNIC



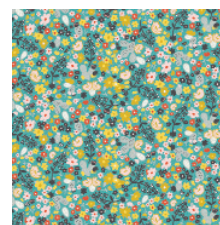
DAI-89400
BLUEBONNET DUSK



DAI-89401
PICNIC PLAID



DAI-89403
CACTUS BLOOM NOON



DAI-89404
SUMMER FIELD



DAI-89405
TACO LOVE LIGHT



DAI-89406
JOYRIDE NIGHT

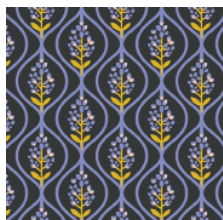


DAI-89407
SCATTERED SHOWERS WARM



DAI-89408
PRICKLY

WINTER BREAK



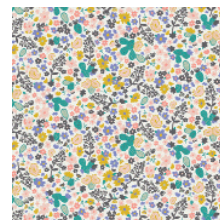
DAI-99400
BLUEBONNET MIDNIGHT



DAI-99402
GRAZING GOATS



DAI-99403
CACTUS BLOOM MOONLIGHT



DAI-99404
WINTER FIELD



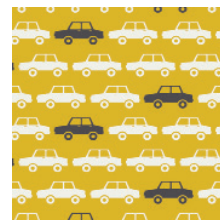
DAI-99405
TACO LOVE BRIGHT



DAI-99406
JOYRIDE DAY



DAI-99407
SCATTERED SHOWERS COOL



DAI-99409
PARALLEL PARKING



FEEL THE DIFFERENCE ©2018 Courtesy of Art Gallery Quilts LLC. All Rights Reserved.

DON TAQUITO

CONSTRUCTION

FINISHED SIZE | 5' x 8'

FABRIC REQUIREMENTS

Fabric A	DAT-89407	5/8 yd.
Fabric B	DAT-99405	5/8 yd.
Fabric C	DAT-99407	scraps
Fabric D	PE-413	scraps

OTHER MATERIALS

batting*
Interfacing*
zipper 14"
bias tape (optional)

*See cutting directions for quantities needed

CUTTING DIRECTIONS

Patterns & Templates are in the back of the Directions and include seam allowance as stated

Fabric **A**

One (1) 10' x 14' rectangle

Fabric **B**

One (1) 10' x 14' rectangle

Four (4) 'Bottom Edge Pieces'

One (1) 2' x 16' strip (wrist strap)

Four (4) 'Center Zipper Side Pieces'

Fabric **C**

One (1) Glasses Appliqué Template

Fabric **D**

One (1) Mustache Appliqué Template

Two (2) Eyes Appliqué Template

Batting

One (1) 10' x 14' rectangle

Interfacing

Two (2) 'Bottom Edge Pieces'

One (1) 2' x 16' strip

Two (2) 'Center Zipper Side Pieces'

Body

- Take your 10' x 14' pieces and make a quilt sandwich with lining, batting and main fabric on top. Right sides of fabric facing out. Quilt a close cross-hatch pattern, or if you prefer not to quilt then baste the edges together. Trace the 'Purse Main Body' pattern onto folded paper and cut out. Place on your quilted fabric and cut out. Mark notches.
- Cut out and prepare appliqué pieces (found in the back of the directions) for face according to manufacturer directions of double sided fusible. Using the placement diagram fuse face in place and edge stitch or blanket stitch.

Make wrist strap

- Fuse interfacing to the wrong side of the 2' x 16' strip. Iron the strip in half, then open and fold fabric towards the fold line and press. Fold in half again and top-stitch all around.

Zipper Center

- Fuse interfacing to contrast fabric side pieces, and to the contrast fabric bottom edge pieces.
- Sandwich the zipper between the two contrast fabric side pieces, fabric right sides together and sew. Flip pieces out, finger press and topstitch. Repeat for the other side of the zipper. Trim the zipper to the length of fabric, making sure to tack the bottom closed.
- On the top edge of the zipper, sandwich the zipper section with the fabric bottom edge pieces, lining up the straight edges, fabric right sides together. Sew, flip and finger press and topstitch.
- Fold the wrist strap in half and baste the raw edges to the edge of the bottom of the zipper section. Now sandwich the same way you did for the top end of the zipper section and sew. Trim, flip and top-stitch.
- Trim the sides so they are all the same width if necessary. Mark the centers.

Final Assembly

- Match the lengthwise centers of the zipper section to the center notches at the top curves of the main body piece and pin, right sides together.
- Match the widthwise centers of the zipper section to the center notches (along the pattern fold line) of the main body piece and pin, right sides together.
- Baste the edges at 3/8", clipping as necessary to fit along the bottom curves. Make sure to not clip into your final seam allowance of 1/2".
- Sew at 1/2" seam allowance, remove basting stitches and finish edges by either over-locking or encasing in bias tape. (Bias tape length needed will be 70").
- Enjoy your taco bag! You are done!



NOTE: While all possible care has been taken to ensure the accuracy of this pattern, We are not responsible for printing errors or the way in which individual work varies.

©2018 Courtesy of Art Gallery Quilts LLC.

Bottom Edge Pieces

Cut 4 Contrast Fabric

Cut 2 Interfacing

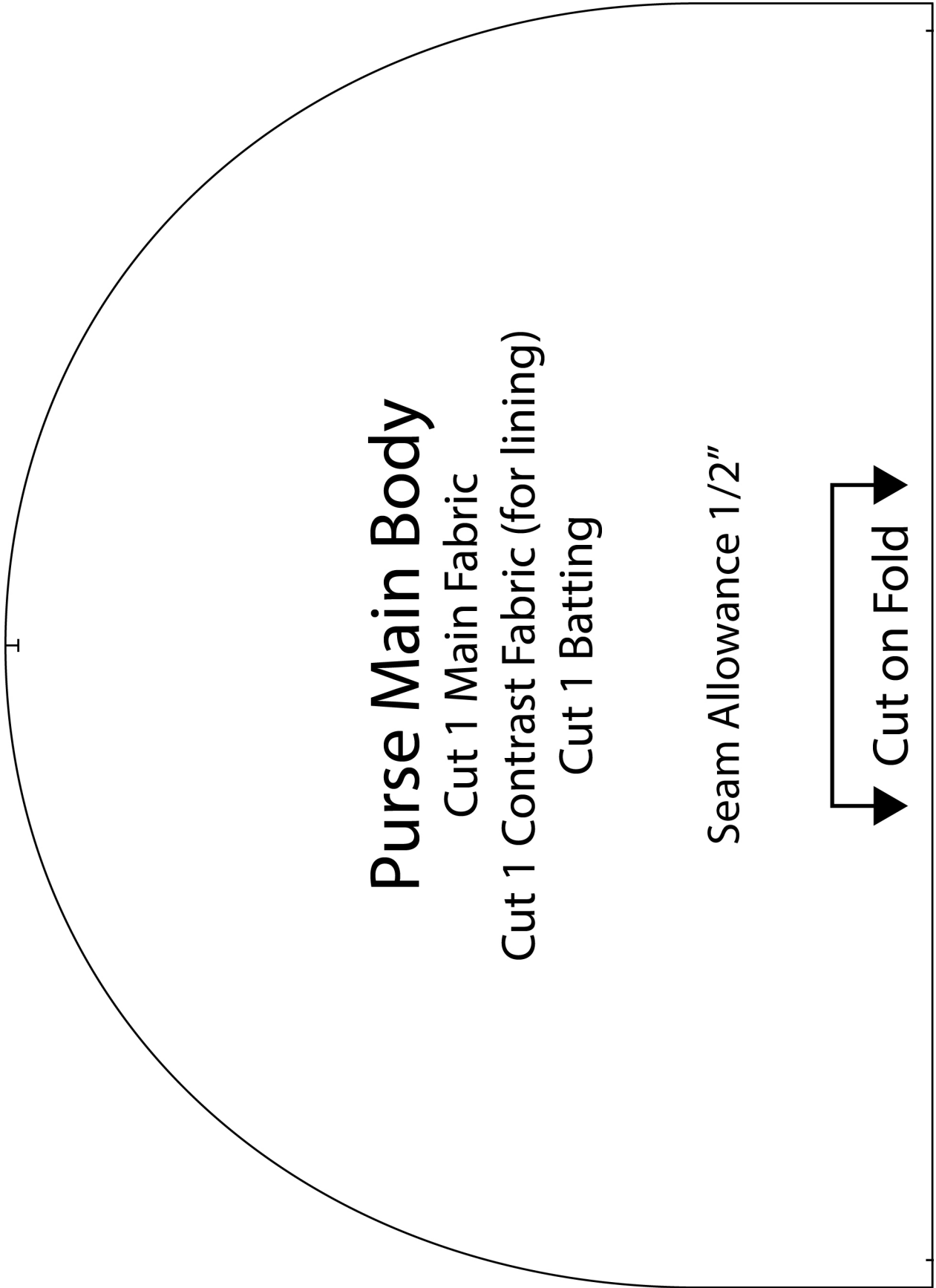
Seam Allowance 1/2"

Seam Allowance 1/2"
Cut on Fold

Center Zipper Side Pieces

Cut 4 Contrast Fabric

Cut 2 Interfacing



Pattern Pieces

Placement Diagram

