

X
X
X
X
X
X
X
X
X
X
X
X
X

penum

HALF YARD VERSION

✕ ✕ ✕ ✕ ✕

▼



x x x x x x x x x x x x x x x x x x



penum

HALF YARD VERSION

QUILT DESIGNED BY AGFstudio

XXXXXX

featuring

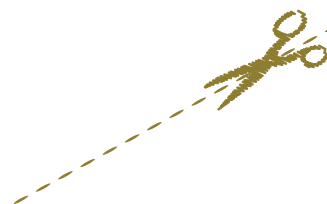
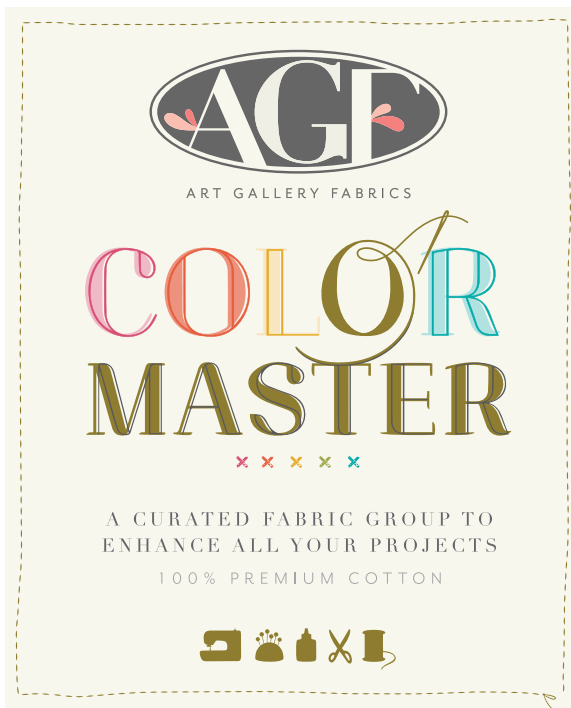
No. 8

TEAL THOUGHTS EDITION



XXXXXXXXXXXXXXXXXXXXXXXXXXXX

IF YOU WOULD LIKE TO CREATE THIS QUILT IN ANY OF THE OTHER COLORS, PLEASE REFER TO THE NEXT PAGES FOR FABRIC SUBSTITUTION.



AGF has created a collector's box of fabrics like no other! Hand-picked for makers to use in a multitude of creative projects. An explosion of color and design made of unique groups of AGF's signature quality cotton paired up with an original and collectible box made exclusively for them!

XXXXXX

Let's make something

© 2017 Courtesy of Art Gallery Quilts LLC. All Rights Reserved.

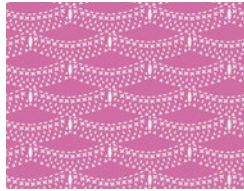
NOTE: While all possible care has been taken to ensure the accuracy of this pattern, We are not responsible for printing errors or the way in which individual work varies. Please read instructions carefully before starting the construction of this quilt. If desired, wash and iron your fabrics before starting to cut.

No. 1

VIBRANT VIOLET EDITION



FUS-S-707
IMPRESSIONS SPICES
FABRIC A



PEP-58201
RUMPLED PHLOX
FABRIC B



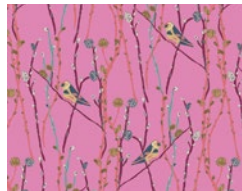
PLG-22341
HE LOVES ME PLUM
FABRIC C



FLO-8120
WHAT AWAITS PROFOUNDLY
FABRIC D



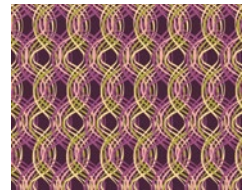
AVG-18904
NEO-FLIES DENSE
FABRIC E



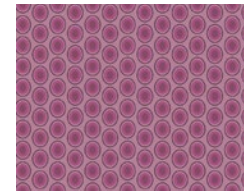
FUS-B-206
ILLUSIONIST VINE BOHO
FABRIC F



LAH-16801
SUNPRINT ORCHID
FABRIC G



BE-6108
WOVEN PASSION
FABRIC H

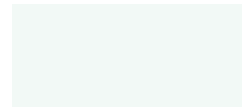


OE-917
JUICY GRAPE
FABRIC I



PE-425
MAUVELOUS
FABRIC J

ADDITIONAL FABRICS
*not included in the
color master box*



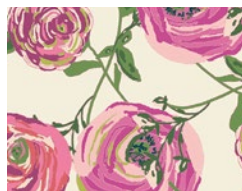
PE-408
WHITE LINEN
FABRIC K (BACKGROUND)



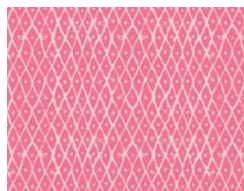
PE-401
VERVE VIOLET
FABRIC L (BINDING)

No. 2

LIFE IS PINK EDITION



JOI-89120
PARADIS SWEET
FABRIC A



WND-1534
DIAMOND FLUSH DANCE
FABRIC B



LAH-26810
GENTLE DRAFT SUNRISE
FABRIC C



FUS-J-308
LET'S CHALK JOYFUL
FABRIC D



DAR-54308
REBEL BRUSHSTROKES
FABRIC E



IMP-10450
ADD STRAWBERRY
FABRIC F



DV-50027
QUITE LOVELY SUGAR
FABRIC G



FE 528
BUBBLEGUM
FABRIC H

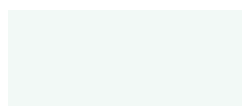


UT-14508
URBAN SPRAWL MAGENTA
FABRIC I



PE-405
CHERRY LIPGLOSS
FABRIC J

ADDITIONAL FABRICS
*not included in the
color master box*



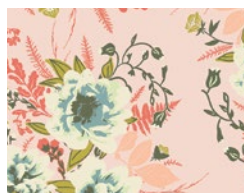
PE-408
WHITE LINEN
FABRIC K (BACKGROUND)



PE-439
RASPBERRY ROSE
FABRIC L (BINDING)

No. 3

CORALINE EDITION



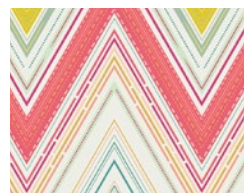
FOR-47700
WILD POSY FLORA
FABRIC A



HAH-14405
TO LIVE BY LOVE
FABRIC B



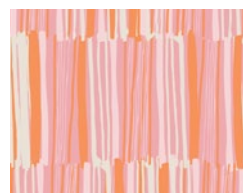
WNG-2027
PLUMAGE POPPY
FABRIC C



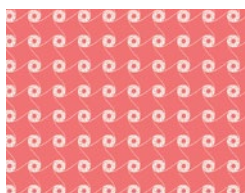
RPT-1709
VIVACIOUS MARVEL CHERRY
FABRIC D



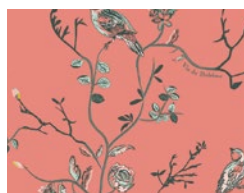
BSH-78406
CAT NAP PINK
FABRIC E



MWK-1118
VITRINE WATERMARKS GLAZE
FABRIC F



CTL-59901
BUOYANT VISTA
FABRIC G



IBH-74204
VIE DE BOHÈME SUNSET
FABRIC H

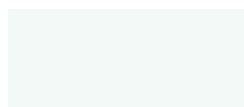


ROE-301
GRAPEFRUIT SMOOTHIE
FABRIC I



PE-450
GRAPEFRUIT
FABRIC J

ADDITIONAL FABRICS
*not included in the
color master box*



PE-408
WHITE LINEN
FABRIC K (BACKGROUND)



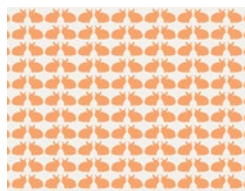
PE-438
CORAL REEF
FABRIC L (BINDING)

No. 4

QUITE PEACHY EDITION



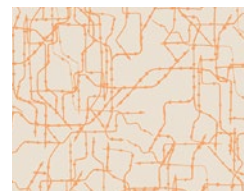
CUL-9672
VINTAGE VASES GINGER
FABRIC A



CUR-19138
CURIOUS BUNNIES FUN
FABRIC B



TAP-72499
DHURRIE LUMINARY
FABRIC C



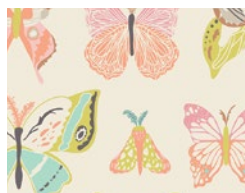
GRA-3501
SUBWAY ROUTES GLOW
FABRIC D



MWK-2120
WISPY DAYBREAK AURA
FABRIC E



CUL-8673
ROW BY ROW LIT
FABRIC F



WNG-1020
WINGSPAN MELON
FABRIC G



GRD-89907
CLIMBING POSIES BLUSH
FABRIC H

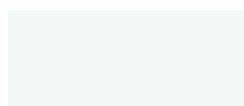


FE-517
SUNSET
FABRIC I



PE-444
PEACH SHERBET
FABRIC J

ADDITIONAL FABRICS
*not included in the
color master box*



PE-408
WHITE LINEN
FABRIC K (BACKGROUND)



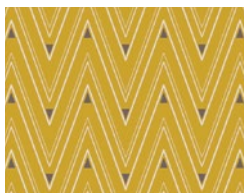
PE-426
APRICOT CREPE
FABRIC L (BINDING)

No. 5

GOLD LEAF EDITION



EMG-5600
FLORAL FLOATS FIELD
FABRIC **A**



ART-53108
COLLAR ENDS BRONZE
FABRIC **B**



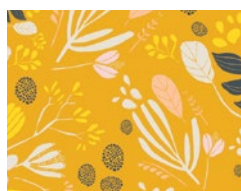
BOU-8050
URVEY OCHRE
FABRIC **C**



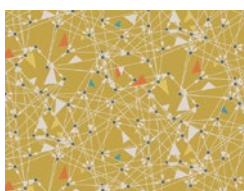
NTF-77900
LUNATION BRIGHT
FABRIC **D**



ETN-50044
DREAMS OF KANDACE
FABRIC **E**



MWK-1110
BARE NOPAL GLEAM
FABRIC **F**



CHR-1203
TRIANGULARITY MUSTARD
FABRIC **G**



CL-30043
TWIGGED PATH SUNLIT
FABRIC **H**

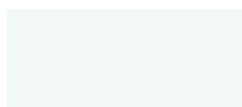


FE-506
SUNFLOWER
FABRIC **I**



PE-459
TURMERIC
FABRIC **J**

ADDITIONAL FABRICS
*not included in the
color master box*



PE-408
WHITE LINEN
FABRIC **K** (BACKGROUND)



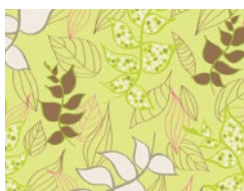
PE-407
EMPIRE YELLOW
FABRIC **L** (BINDING)

No. 6

LEMON GREEN EDITION



SGE-14453
YUMA LEMONS MIST
FABRIC **A**



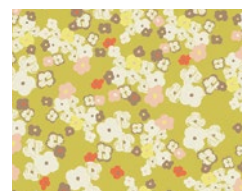
NA-5803
LIGHT ORGANIC LEAVES
FABRIC **B**



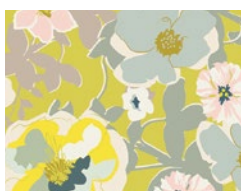
WOT-31407
BLOOMING BROOK SOL
FABRIC **C**



UT-14506
LUCID HILLS AMBER
FABRIC **D**



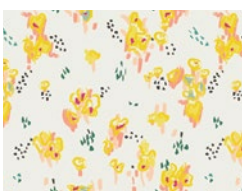
CHR-1303
LOVE NOTES RETRO
FABRIC **E**



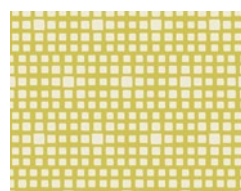
HRT-95300
BLOMMA GARDEN GOLDEN
FABRIC **F**



BWD-787
SODA STRAWS
FABRIC **G**



RPT-1707
SACCHARINE LEMON
FABRIC **H**

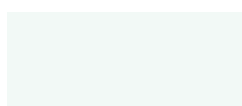


CST-3201
KING'S ROAD LEMON
FABRIC **I**



PE-446
HONEYDEW
FABRIC **J**

ADDITIONAL FABRICS
*not included in the
color master box*



PE-408
WHITE LINEN
FABRIC **K** (BACKGROUND)



PE-409
LIGHT CITRON
FABRIC **L** (BINDING)

No. 7

EMERALD STONE EDITION



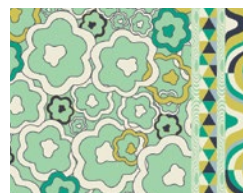
MW-80020
SUMMER GROVE BY NIGHT
FABRIC A



JAV-723
GREENHOUSE LANE
FABRIC B



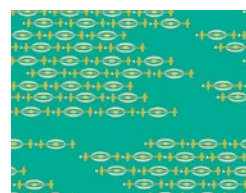
GRD-79902
MOMENT IN TIME LIGHT
FABRIC C



CST-3202
PSYCHEDELIA PERIDOT
FABRIC D



SCC-88601
TRAILING AGAVE
FABRIC E



UT-24501
ATOMIC INFLUX ALLOY
FABRIC F



CHP-40208
LET'S CHALK GREEN
FABRIC G



PRS-215
COTTAGELY POSY
FABRIC H

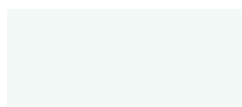


ROE-306
SPEARMINT FLOAT
FABRIC I



PE-417
EMERALD
FABRIC J

ADDITIONAL FABRICS
*not included in the
color master box*



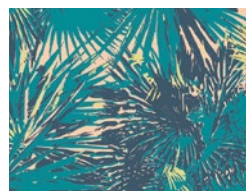
PE-408
WHITE LINEN
FABRIC K (BACKGROUND)



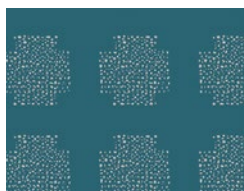
PE-446
HUNTER FIELDS
FABRIC L (BINDING)

No. 8

TEAL THOUGHTS EDITION



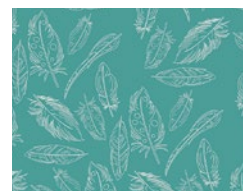
CTL-59904
TROPICAL BREEZE
FABRIC A



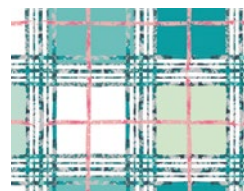
IMP-40450
ADD BLUEBERRY
FABRIC B



LAH-26800
MOTHER'S GARDEN RICH
FABRIC C



PEP-68204
PANACHE FRESCO
FABRIC D



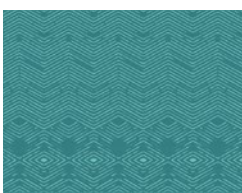
LAH-26811
TRELLIS PLAID FRESH
FABRIC E



LB-1105
LACIS BLUEBERRY
FABRIC F



LAH-26803
BLOSSOM SWALE CALM
FABRIC G



LAH-26803
BLOSSOM SWALE CALM
FABRIC H

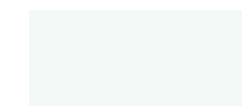


ROE-308
VINTAGE TEAL
FABRIC I



PE-418
TILE BLUE
FABRIC J

ADDITIONAL FABRICS
*not included in the
color master box*



PE-408
WHITE LINEN
FABRIC K (BACKGROUND)



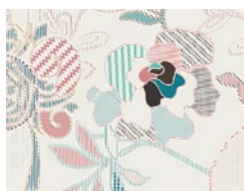
PE-442
OCEAN WAVES
FABRIC L (BINDING)

No. 9

FRESH WATER EDITION



WNG-2024
FRILLY FLUTTERS MIST
FABRIC A



ETN-40040
STITCHED ANTHOMANIA
FABRIC B



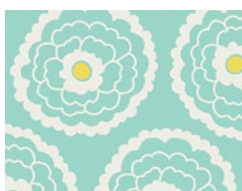
LT-10037
PLAYFUL PETALS MENTHE
FABRIC C



IBH-64204
VIE DE BOHÈME SUNRISE
FABRIC D



CUR-29138
CURIOUS BUNNIES CALM
FABRIC E



ESS-2000
GIRL ABOUT TOWN MINT
FABRIC F



HME-80405
REMASTERING AQUA
FABRIC G



CHP-40202
WRITINGS ON WALLS
FABRIC H

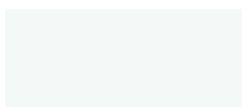


ROE-305
SEAFOAM SWIRLS
FABRIC I



PE-403
FRESH WATER
FABRIC J

ADDITIONAL FABRICS
*not included in the
color master box*



PE-408
WHITE LINEN
FABRIC K (BACKGROUND)



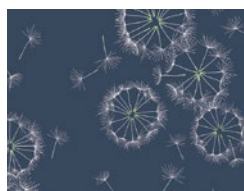
PE-424
MIRAGE BLUE
FABRIC L (BINDING)

No. 10

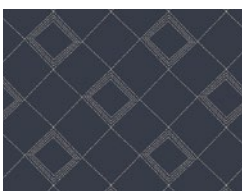
MIDNIGHT OCEAN EDITION



DAR-54307
DEFYING BUDS SEA
FABRIC A



SBK-47202
TINY DANCER MIDNIGHT
FABRIC B



IFL-46307
TARTAN MIDNIGHT
FABRIC C



SBK-47200
INK OUTBURST ATELIER
FABRIC D



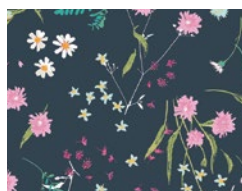
GRD-89906
TWINKLESTAR BLU
FABRIC E



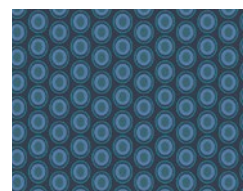
CUR-29136
CAUGHT SNOWFLAKES
FABRIC F



RCL-604
CROSSED IMPRESSIONS
FABRIC G



LAH-16803
BLOSSOM SWALE
FABRIC H

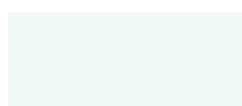


OE-916
MOOD INDIGO
FABRIC I



PE-467
NIGHT SEA
FABRIC J

ADDITIONAL FABRICS
*not included in the
color master box*



PE-408
WHITE LINEN
FABRIC K (BACKGROUND)



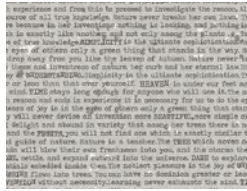
PE-428
NOCTURNAL
FABRIC L (BINDING)

No. 11

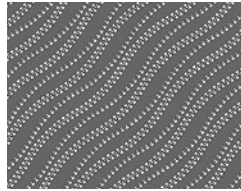
CLEAN SLATE EDITION



BLI-85600
ARCADIA BLISS DIM
FABRIC A



BLI-85601
PHILOSOPHER'S DREAMS
FABRIC B



MKR-3883
MAKE CLOSURES PEWTER
FABRIC C



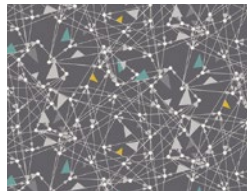
HME-70409
SILHOUETTE LANE
FABRIC D



HME-70403
TUNER TUMBLE BASS
FABRIC E



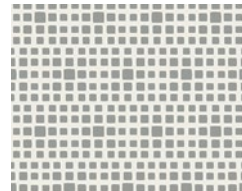
WND-1536
UNCAGED WORDS LINEN
FABRIC F



CHR-1200
TRIANGULARITY MOON
FABRIC G



LAM-54280
ASPHODEL TRACE
FABRIC H

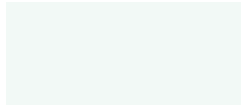


SE-606
SHADOW
FABRIC I



PE-410
ASH
FABRIC J

ADDITIONAL FABRICS
*not included in the
color master box*



PE-408
WHITE LINEN
FABRIC K (BACKGROUND)



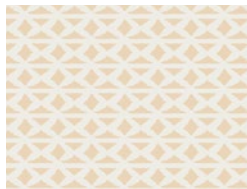
PE-430
MOONSTONE
FABRIC L (BINDING)

No. 12

WINTER WHEAT EDITION



BOU-7044
MACRAME LACE
FABRIC A



BOU-8049
WALLPAPER FLESH
FABRIC B



GSS-6244
MESH JOY
FABRIC C



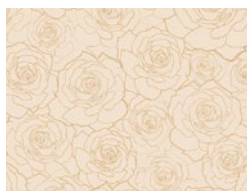
PPE-344
PARCHMENT
FABRIC D



GSS-6242
FILAMENTS ETHEREAL
FABRIC E



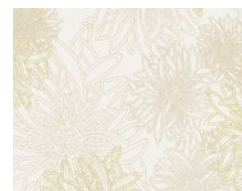
PPE-347
STAMPED
FABRIC F



PRS-214
STEEPING AWAKENING
FABRIC G



WND-2534
DIAMOND FLUSH GOLD
FABRIC H

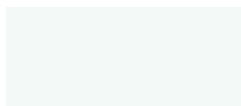


FE-533
WINTER WHEAT
FABRIC I



PE-436
CREME DE LA CREME
FABRIC J

ADDITIONAL FABRICS
*not included in the
color master box*



PE-408
WHITE LINEN
FABRIC K (BACKGROUND)



PE-444
PEACH SHERBET
FABRIC L (BINDING)



FINISHED SIZE | 64' x 73'

FABRIC REQUIREMENTS

No. 8 TEAL THOUGHTS EDITION

$\frac{1}{2}$ yd Color Master Box

Fabric A	CTL-59904	$\frac{1}{2}$ yd.
Fabric B	IMP-40450	$\frac{1}{2}$ yd.
Fabric C	LAH-26800	$\frac{1}{2}$ yd.
Fabric D	PEP-68204	$\frac{1}{2}$ yd.
Fabric E	LAH-26811	$\frac{1}{2}$ yd.
Fabric F	LB-1105	$\frac{1}{2}$ yd.
Fabric G	LAH-26803	$\frac{1}{2}$ yd.
Fabric H	NTF-67904	$\frac{1}{2}$ yd.
Fabric I	ROE-308	$\frac{1}{2}$ yd.
Fabric J	PE-418	$\frac{1}{2}$ yd.

Additional Fabrics

Fabric K	PE-408	$4\frac{3}{8}$ yd.
Fabric L	PE-442	$\frac{3}{4}$ yd.

BACKING FABRIC

LAH-26800 4 yds. (Suggested)

BINDING FABRIC

PE-442 (Fabric **L**) (included)

CUTTING DIRECTIONS

$\frac{1}{4}$ " seam allowances are included.
WOF means width of fabric.

Eight (8) 5' x 9 $\frac{1}{2}$ ' rectangles from fabrics **A, B, E, G, H & I**

Nine (9) 5' x 10' rectangles from fabrics **C, D, F & J**

Six (6) 1' x WOF strips from fabric **L** (Inner borders)

Four (4) 5 x 9 $\frac{1}{2}$ ' rectangles from fabric **L**

One-hundred and seventy-six (176) 5' squares from fabric **K**

XX

Four (4) 29 $\frac{5}{8}$ ' x 5' strips from fabric **K** (Outer borders)

Four (4) 38 $\frac{1}{2}$ ' x 5' strips from fabric **K** (Outer borders)

* In order to get these long strips you need to join two or more Width Of Fabric strips together.

CONSTRUCTION

Sew all rights sides together with $\frac{1}{4}$ " seam allowance.

- You will have ten different flying geese combinations.
- Repeat the following step to complete a total of eighty-four.
- You will find a table with the specific number of geese for each fabric after the sample instructions
- All combinations include two of the squares from fabric **K**. Grab one rectangle from fabric **A**, and place one of the fabric **K** squares on top of it right sides together. Make sure it is aligned to the right with the drawn line going upward to the left. Proceed to sew directly on top of the drawn line

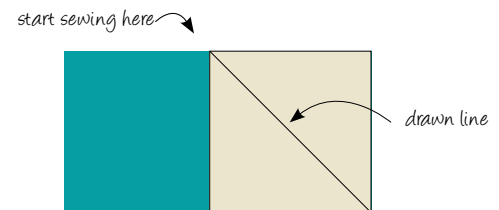


DIAGRAM 1

- Once you sew that, proceed to measure $\frac{1}{4}$ " from that seam toward the outside of the block and cut excess with a rotary cutter. Use a ruler for better accuracy

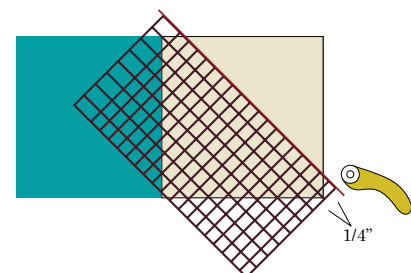


DIAGRAM 2

- Press fabric **K** so that all right sides of fabric are on the same side



DIAGRAM 3

- Repeat the previous steps on the left side of the rectangle

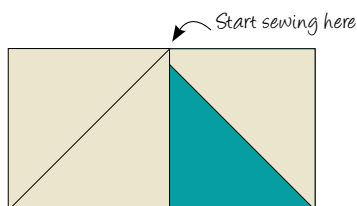


DIAGRAM 4

- This is how the final geese look.

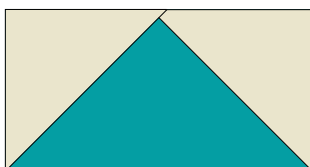


DIAGRAM 5

- This is the table with the number of blocks made with each fabric. Remember ALL blocks also utilize 2 squares from fabric **K**

FABRIC	# OF BLOCKS
A	8
B	8
C	8
D	9
E	8
F	9
G	8
H	8
I	8
J	9

DIAGRAM 6

ASSEMBLING THE TOP

- Follow the Cover page to determine the order of the Flying Geese. You can decide to attach the rows first or the columns first, and then attach them to each other.

For the inner border

- Sew two 1" x 58" Fabric **L** strips along the top & bottom sides of the quilt top.
- Sew the other two 1" x 67 1/4" Fabric **L** strips along the left & right sides of the quilt top.
- Trim excess fabric

For the outer border Top & Bottom Strips

- Grab Two 29 5/8" x 5" strips from fabric **K** and one rectangle from fabric **L**
- Using the same technique from Step 1 of the Flying Geese construction you will apply one strip on each side of the fabric **L** triangle.
- Trace a 45° angle line from the right bottom corner of one of the fabric **K** strips
- Align the strip with the fabric **L** triangle on the right edges
- Proceed to sew directly on top of the drawn line

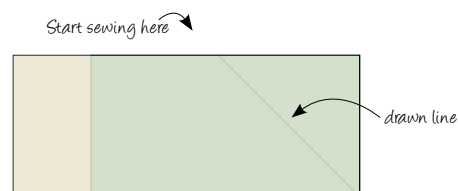


DIAGRAM 7

- Follow the steps from the geese construction regarding cutting excess fabric and pressing.
- Repeat on the left side of the panel with the remaining fabric **K** strip.
- Press all seams open. You should have a long border strip that measures 58 3/4" x 5 1/4"
- Trim excess fabric



DIAGRAM 8

- Repeat all of the previous steps to create a second identical strip for the bottom part.
- Attach the strips to the top and bottom sides of the body of the quilt so that the triangles point away from it (follow the quilt photo).

Left & Right Side Strips

- Grab two 38 1/2" x 5 1/4" strips from fabric **K**, and one rectangle from fabric **L**.
- Repeat the same instructions from the "top & bottom" border strips until you have two long strips that measure 76 3/4" x 5 1/4" each.
- Attach the strips to the left and right sides of the body of the quilt respectively and so that the triangles point away from it (follow the quilt photo).

QUILT ASSEMBLY

Sew rights sides together.

- Place BACKING FABRIC on a large surface wrong side up. Stretch it with masking tape against that surface.
- Place BATTING on top of backing fabric.
- Place TOP on top of the batting with right side facing up. Smooth away wrinkles using your hands.
- Pin all layers together and baste with basting thread, using long stitches. You can also use safety pins to join the layers.
- Machine or hand quilt starting at the center and working towards the corners. Remember that quilting motifs are a matter of personal preference. Have fun choosing yours!
- After you finished, trim excess of any fabric or batting, squaring the quilt to proceed to bind it.

BINDING

Sew rights sides together.

- Cut enough strips 1 1/2" wide by the width of the fabric **L** to make a final strip 300" long. Start sewing the binding strip in the middle of one of the sides of the quilt, placing the strip right side down and leaving an approximated 5" tail. Sew with 1/4" seam allowance (using straight stitch), aligning the strip's raw edge with the quilt top's raw edge.
- Stop stitching 1/4" before the edge of the quilt (**DIAGRAM B1**). Clip the threads. Remove the quilt from under the machine presser foot. Fold the strip in a motion of 45° and upward, pressing with your fingers (**DIAGRAM B2**). Hold this fold with your finger, bring the strip down in line with the next edge, making a horizontal fold that aligns with the top edge of the quilt (**DIAGRAM B3**). Start sewing at 1/4" of the border, stitching all the layers. Do the same in the four corners of the quilt.
- Stop stitching before you reach the last 5 or 6 inches. Cut the threads and remove the quilt from under the machine presser foot. Lay the loose ends of the binding flat along the quilt edge, folding the ends back on themselves where they meet. Press them together to form a crease. Using this crease as the stitching line, sew the two open ends of the binding with right sides together (you can help yourself marking with a pencil if the crease is difficult to see).
- Trim seam to 1/4" and press open. Complete the sewing. Turn binding to back of the quilt, turn raw edge inside and stitch by hand using blind stitch.

