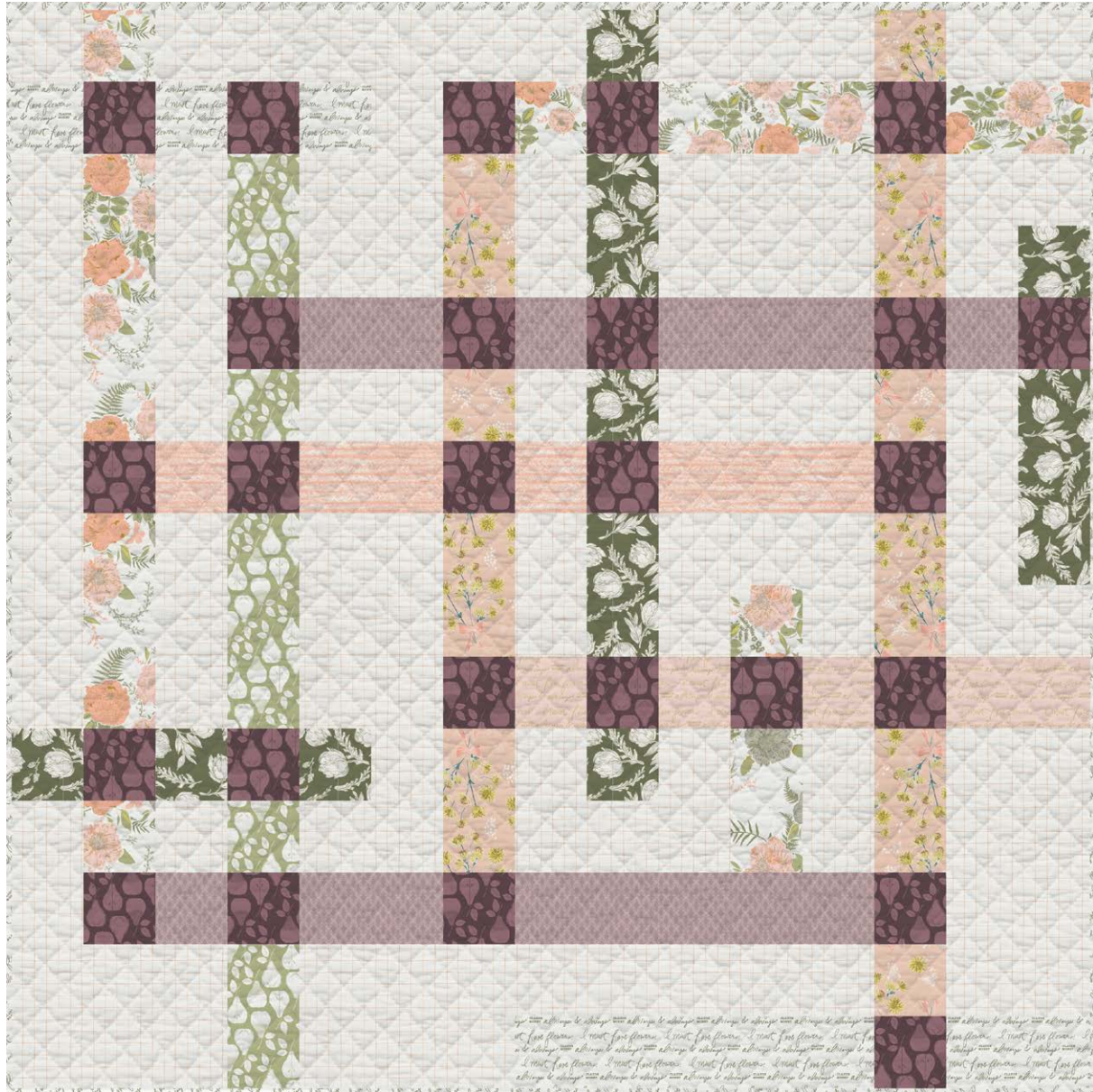


FREE QUILT PATTERN

HARVEST

DESIGNED BY
Bonnie Christine



FEEL THE DIFFERENCE
artgalleryfabrics.com

gathered 
COLLECTION

AVAILABLE JUNE 2018

KIT QUANTITIES

GTH-37502	1/2 YD
GTH-37503	1 YD
GTH-37505	1/2 YD
GTH-47505	5/8 YD
GTH-47501	1/2 YD
GTH-47503	1/2 YD
GTH-47506	2 YD
GTH-47510	1/2 YD
GTH-47504	1/2 YD
Backing	4 1/4 YD

FINISHED SIZE 68" x 68"

OPTIONAL COORDINATING ELEMENTS



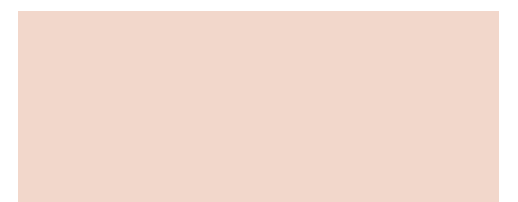
PE-426 APRICOT CREPE



FE-517 SUNSET



PE-444 PEACH SHERBET



PE-471 SWEET MACADEMIA



PE-468 DRIED MOSS



FE-513 HONEY MUSTARD



PE-421 HONEY



FE-532 HAY



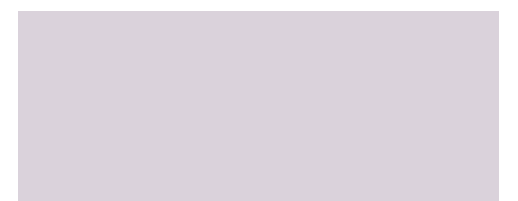
FE-509 DUSTY OLIVE



PE-452 SPRUCE



PE-425 MAUVELOUS

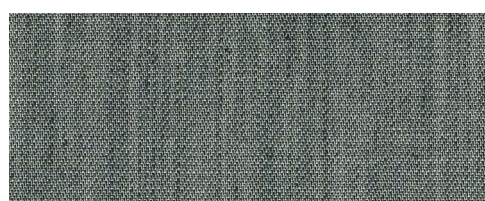


PE-470 LAVANDER WATER

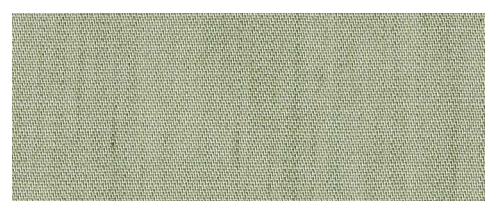
mix & match *with* THE DENIM STUDIO



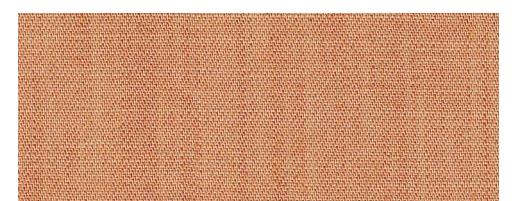
DEN-L-4000 SOFT SAND



DEN-S-2002 COOL FOLIAGE



DEN-S-2005 FROSTED SAGE



DEN-S-2007 NECTARINE SUNRISE



APPAREL



NAMED CLOTHING
ONDEE SWEATER
LUMME PLEATED SKIRT



SIMPLY SEWING MAG
WALKLEY DRESS



APRIL RHODES
STAPLE DRESS



NAMED CLOTHING
QUINN SHIRT
MANTA WAVE LEGGINGS

CHILDREN



HEY THERE THREADS
BABY BASIC SHORTS
BUTTERICK - B6045



BRINDILLE & TWIG
BODYSUIT 9

ACCESORIES



LGB STUDIO
LEATHER ACCENT
FOLD OVER POUCH



HOME DECOR



GARDEN DREAMER TABLE RUNNER
liveartgalleryfabrics.com/free-sewing-patterns/



ARBOR QUILT PATTERN
liveartgalleryfabrics.com/free-quilting-patterns/