

The image displays a 3x3 grid of nine quilt blocks, each with a unique pattern and color scheme. The patterns include cars, donkeys, cacti, and various geometric shapes. The colors used are yellow, black, white, teal, red, orange, purple, and pink.

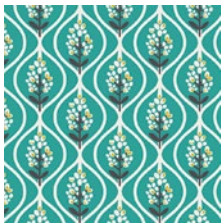
XXXXXXXXXXXXXXXXXXXXXXXXXXXX

A DIVISION OF AGF

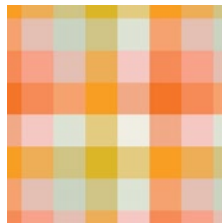


FABRICS DESIGNED BY DANA WILLARD

SUMMER PICNIC



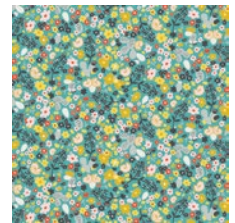
DAT-89400  
BLUEBONNET DUSK



DAT-89401  
PICNIC PLAID



DAT-89403  
CACTUS BLOOM NOON



DAT-89404  
SUMMER FIELD



DAT-89405  
TACO LOVE LIGHT



DAT-89406  
JOYRIDE NIGHT

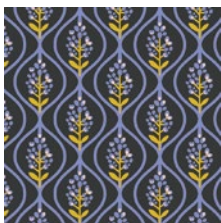


DAT-89407  
SCATTERED SHOWERS WARM



DAT-89408  
PRICKLY

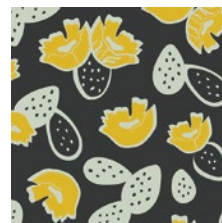
WINTER BREAK



DAT-99400  
BLUEBONNET MIDNIGHT



DAT-99402  
GRAZING GOATS



DAT-99403  
CACTUS BLOOM MOONLIGHT



DAT-99404  
WINTER FIELD



DAT-99405  
TACO LOVE BRIGHT



DAT-99406  
JOYRIDE DAY



DAT-99407  
SCATTERED SHOWERS COOL



DAT-99409  
PARALLEL PARKING



FEEL THE DIFFERENCE © 2018 Courtesy of Art Gallery Quilts LLC. All Rights Reserved.





FINISHED SIZE |10" x 10"

## FABRIC REQUIREMENTS

BLOCK 1		
Fabric <b>A</b>	DAT-99409	F8
Fabric <b>B</b>	DAT-99402	F8
Fabric <b>C</b>	PE-413	F8
BLOCK 2		
Fabric <b>D</b>	DAT-89405	F8
Fabric <b>E</b>	DAT-89404	F8
Fabric <b>F</b>	PE-402	F8
BLOCK 3		
Fabric <b>G</b>	DAT-89408	F8
Fabric <b>H</b>	DAT-89404	F8
Fabric <b>I</b>	PE-451	F8
BLOCK 4		
Fabric <b>J</b>	DAT-99406	F8
Fabric <b>K</b>	DAT-99405	F8
Fabric <b>L</b>	PE-441	F8

## CUTTING DIRECTIONS

*1/4" seam allowances are included.  
WOF means width of fabric.*

One (1) 5 7/8" x 5 7/8" square from Fabrics **A, B**

Two (2) 5 7/8" x 5 7/8" square from Fabric **C**

Two (2) 5 1/2" x 2 1/2" rectangle from Fabrics **A, B**

Two (2) 5 1/2" x 1 1/2" rectangle from Fabric **C**

## CONSTRUCTION

*Sew all rights sides together with 1/4" seam allowance.*

- Start by taking Fabric **C** 5 7/8" x 5 7/8" square and draw a diagonal line from one corner to the opposite corner on the reverse side of the lightest square.
- Pair the marked square with Fabric **A** 5 7/8" x 5 7/8" square of the same size, edges matched and right sides together.
- Sew two seams, each 1/4" from the marked center line.
- Press and steam
- Repeat the same process for Fabric **B-C**

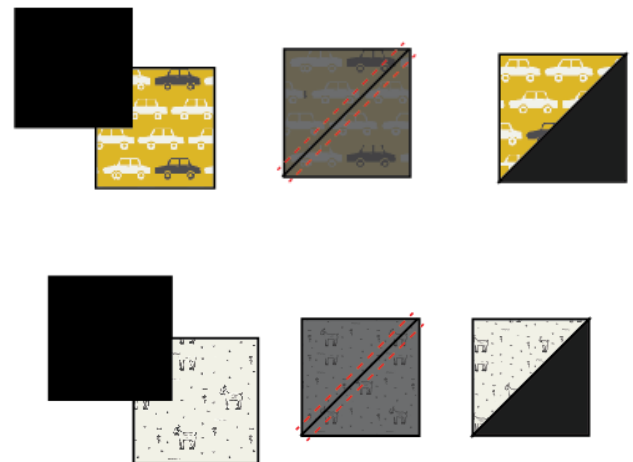


DIAGRAM 1

- Now, take Fabric **A** 5 1/2" x 2 1/2" rectangle and pair it with an 5 1/2" x 1 1/2" rectangle from Fabric **C**
- Then, take an Fabric **B** 5 1/2" x 2 1/2" rectangle and pair it with the fabric **C** rectangle piece.
- Repeat the same procedure in order to have two blocks



DIAGRAM 2

- Follow diagram below for each block assembly:

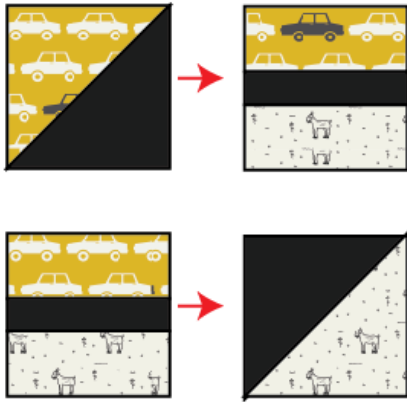


DIAGRAM 3

- Now, pair both rows as diagram below:



DIAGRAM 4

- Now, quilt as desired.
- And, if you want to create the other quilt blocks, just follow the same instructions, but for two of the quilt blocks, you will need to change the direction of the blocks



[artgalleryfabrics.com](http://artgalleryfabrics.com)

NOTE: While all possible care has been taken to ensure the accuracy of this pattern, We are not responsible for printing errors or the way in which individual work varies. Please read instructions carefully before starting the construction of this quilt. If desired, wash and iron your fabrics before starting to cut.

© 2018 Courtesy of Art Gallery Quilts LLC. All Rights Reserved.