



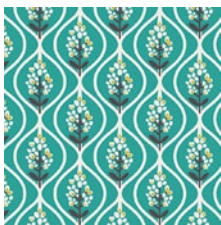


# Cactus Bloom

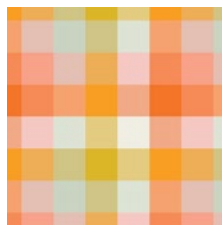


FABRICS DESIGNED BY DANA WILLARD

SUMMER PICNIC



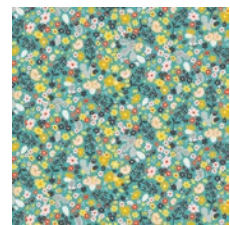
DAT-89400  
BLUEBONNET DUSK



DAT-89401  
PICNIC PLAID



DAT-89403  
CACTUS BLOOM NOON



DAT-89404  
SUMMER FIELD



DAT-89405  
TACO LOVE LIGHT



DAT-89406  
JOYRIDE NIGHT

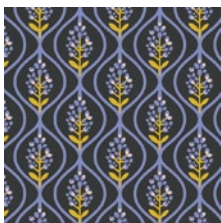


DAT-89407  
SCATTERED SHOWERS WARM



DAT-89408  
PRICKLY

WINTER BREAK



DAT-99400  
BLUEBONNET MIDNIGHT



DAT-99402  
GRAZING GOATS



DAT-99403  
CACTUS BLOOM MOONLIGHT



DAT-99404  
WINTER FIELD



DAT-99405  
TACO LOVE BRIGHT



DAT-99406  
JOYRIDE DAY



DAT-99407  
SCATTERED SHOWERS COOL



DAT-99409  
PARALLEL PARKING



FEEL THE DIFFERENCE © 2018 Courtesy of Art Gallery Quilts LLC. All Rights Reserved.



FINISHED SIZE 16" x 16"

## FABRIC REQUIREMENTS

Fabric A	DAT-89403	½ yd
Fabric B	PE-407	1/6 yd
Fabric C	PE-402	½ yd

BACKING FABRIC  
PE-402 (included)

## CUTTING DIRECTIONS

¼" seam allowances are included.  
WOF means width of fabric.

- One (1) 14½" x 13½" square from Fabric A
- One (1) 16½" x 3½" rectangle from Fabric B
- One (1) 13½" x 2½" rectangle from Fabric B
- Eight (8) 9½" x ½" strips from Fabric C

## CONSTRUCTION

Sew all rights sides together with ¼" seam allowance.

- Take an 13½" x 2½" rectangle from Fabric B and pair it on the left side of Fabric A 14½" x 13½" square.
- Now, pair 16½" x 3½" rectangle from Fabric B on the top side of Fabric A-B

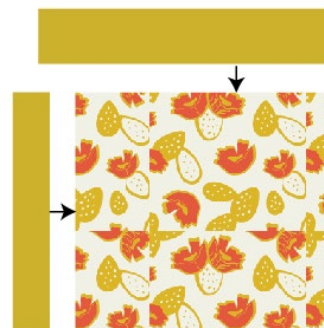


DIAGRAM 1

- Now, take Fabric C 9½" x ½" strips, and place the first strip, 4¼" from the top down, and close to the edge of the right side.
- Now, for the second, third and fourth, place them with 1" margin space from each other.

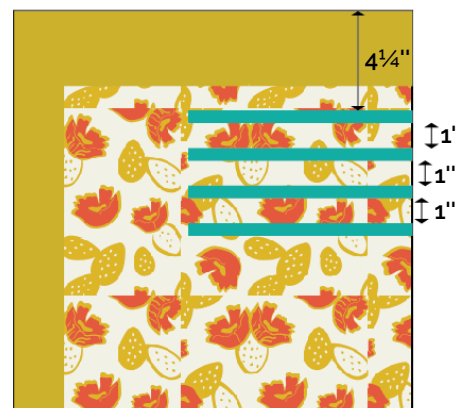


DIAGRAM 2

- Place the fifth strip on the left side of the pillow and keeping the 1" margin space as the rest of the pillow.
- Place the remaining strips on the left side as diagram below.
- Top stitch each strip and quilt as desired

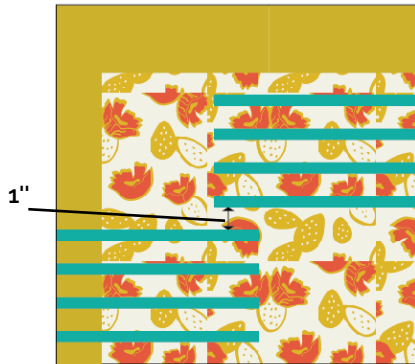


DIAGRAM 3

## CREATING THE BACK PILLOW

*Sew all rights sides together with 1/4" seam allowance. Press open.*

- To make a envelope back for your pillow take both 16½' x 12' rectangles and fold one 12' side on each rectangle in 1/2' and press and then fold another 1/2' and press.
- Top stitch as close to the edge as possible.
- Place rectangles right side together on top of each other to the front of your pillow and stitch all the way around your pillow at 1/4' seam allowance.
- Clip corners at seam allowance and flip piece to the right side of the fabric.
- Fill pillow with a 16' x 16' pillow form and enjoy!



[artgalleryfabrics.com](http://artgalleryfabrics.com)

NOTE: While all possible care has been taken to ensure the accuracy of this pattern, We are not responsible for printing errors or the way in which individual work varies. Please read instructions carefully before starting the construction of this quilt. If desired, wash and iron your fabrics before starting to cut.

© 2018 Courtesy of Art Gallery Quilts LLC. All Rights Reserved.