

## A close-up photograph of a person's ear wearing a large, triangular earring. The earring is made of fabric and features a black top section with a white geometric pattern of circles and lines. Two bright red, teardrop-shaped tassels hang from the bottom of the triangle. The earring is attached to a silver-colored hook. The background shows the person's skin and a blue and white striped shirt.



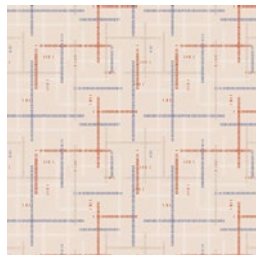
# Dashing Earrings

AGFstudio

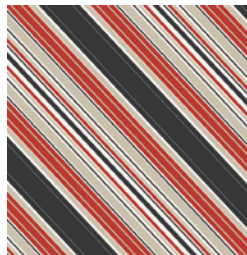


## ALIGNED

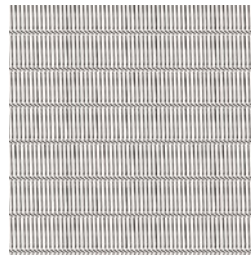
FABRICS DESIGNED BY AGF STUDIO



CAP-A-7000  
INTERCONNECTED



CAP-A-7001  
SLANTED



CAP-A-7002  
HYPHENATED



CAP-A-7003  
LINEUP



CAP-A-7004  
DIVIDED



CAP-A-7005  
ON LINES



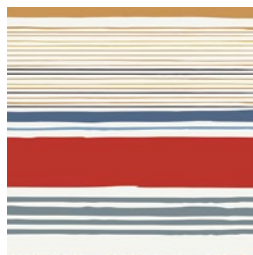
CAP-A-7006  
PARALLEL



CAP-A-7007  
LINKED



CAP-A-7008  
DASH-ING



CAP-A-7009  
LINE STUDY



FEEL THE DIFFERENCE © 2017 Courtesy of Art Gallery Quilts LLC. All Rights Reserved.



# Dashing Earrings

FINISHED SIZE | 2" x 3"

## FABRIC REQUIREMENTS

Fabric <b>A</b>	CAP-A-7008	F8
Fabric <b>B</b>	PE-456	F8

### Additional Materials:

Steam-A-Seam 2 Double Stick Fusible Tape  
Dritz Fray Check Liquid  
Pliers  
Metal Rings  
Earring Hooks/ Earring hooks  
Safety pin  
Thimble  
Kraft paper fabric ( black)

## CUTTING DIRECTIONS

*1/4" seam allowances are included.  
WOF means width of fabric.*

Four (4) Template 1 from fabric **A**

Two (2) Template 1 from Kraftex fabric

Eight (8) Template 2 from fabric **B**

Four (4) Template 2 from Kraftex fabric

## CONSTRUCTION

*Sew all rights sides together with 1/4" seam allowance.*

- Take Template 1 Kraftex and apply double fusible tape on one side.
- Press and Steam
- Remove the paper, place an Fabric **A** Template 1 piece wrong side facing down
- Press and Steam.
- Repeat same process for the other side and for your second earring piece.

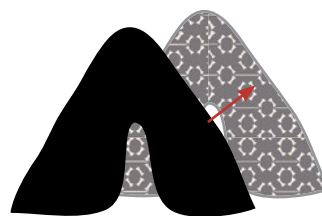


DIAGRAM 1

- Take Template 2 Kraftex and apply double fusible tape on one side.
- Press and Steam
- Remove the paper, place an Fabric **B** Template 2 piece wrong side facing down
- Press and Steam.
- Repeat same process for the other side and for your second piece and for the two pieces of your other earring.

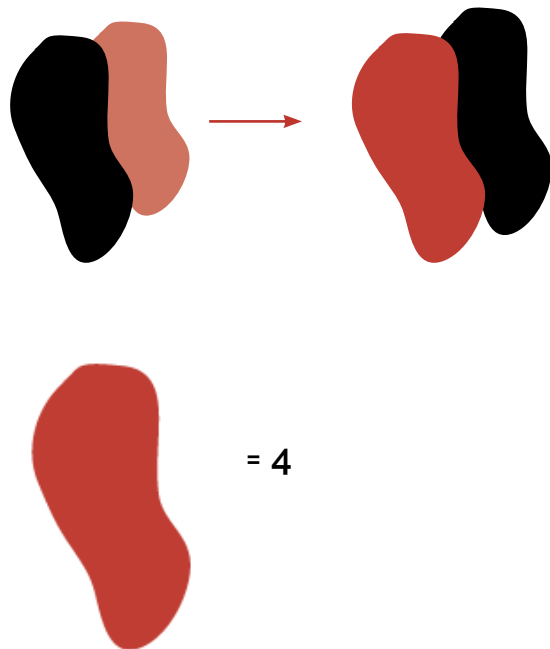


DIAGRAM 2

- Now, Take Fabric **A** pieces and place a mark with your erasable pen on the bottom of each side, close to the edge.
- Take your safety pin and insert it through
- With the plyer, insert a metal ring, leaving it open
- Repeat the same process for the other Fabric **A** piece

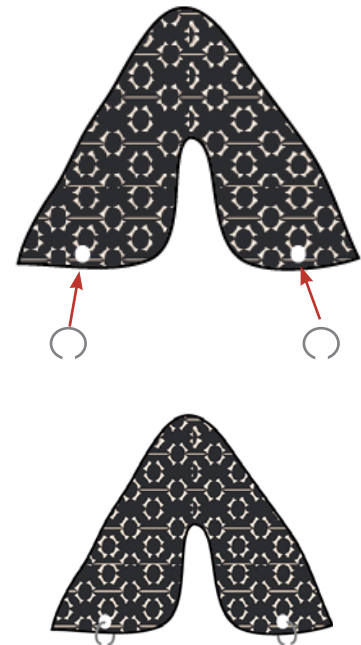


DIAGRAM 3

- Now, Take Fabric **B** pieces and place a mark with your erasable pen on the top close to the edge.
- Take your safety pin and insert it through
- With the plyer, insert the metal ring from one side of the Fabric **A** piece.
- With the plyer, close the ring
- To attach the other side piece, repeat the same process as above.
- Also, repeat the same process for the other earring.



DIAGRAM 4

## Hook Earring technique:

- For this option, take your fabric **A** piece and mark with your fabric erasable pen
- Take your safety pin and push the needle through the marked dot
- Take your plyer and metal ring and insert it
- Take your earring hook and attach it on the ring
- Close the metal ring with your plyer
- Repeat the same process for the other earring



DIAGRAM 5

## Post Earring technique:

- For this option, take your fabric **A** piece and mark with your fabric erasable pen where the earring post will be placed.
- You will want it to be as close to the top edge as possible
- Take your hot glue silicone and place a small amount on the marked dot
- Take the earring post and press
- Set aside to let dry
- Repeat the same process for the other earring


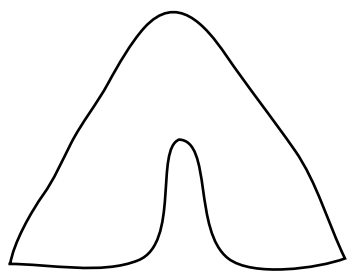


DIAGRAM 6



[artgalleryfabrics.com](http://artgalleryfabrics.com)

NOTE: While all possible care has been taken to ensure the accuracy of this pattern, We are not responsible for printing errors or the way in which individual work varies. Please read instructions carefully before starting the construction of this quilt. If desired, wash and iron your fabrics before starting to cut.



## Template 2