

XXXXXX

Flora Delight

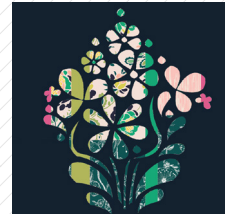


FREE PATTERN

XXXXXXXXXXXXXXXXXXXXXXXXXXXX

Flora Delight

PILLOW SET DESIGNED BY AGF STUDIO

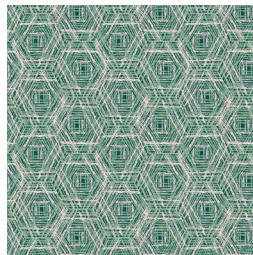


FLORALIA FUSION

FABRICS DESIGNED BY AGF STUDIO



FUS-F-1000
BRAVE BLOOMED CITY



FUS-F-1001
TRACERY FLORALIA



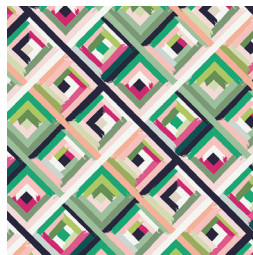
FUS-F-1002
FEMME METALE FLORALIA



FUS-F-1003
LINE DRAWINGS FLORALIA



FUS-F-1004
SPARKLER FLORALIA



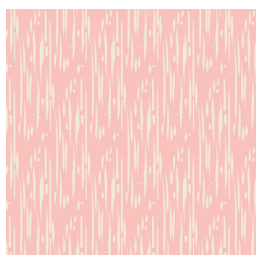
FUS-F-1005
ROADSIDE GUIDES FLORALIA



FUS-F-1006
BLOSSOM DRIFT FLORALIA



FUS-F-1007
WINGSPAN FLORALIA



FUS-F-1008
RETRO HARMONY CITY



FUS-F-1009
SPANISH PETALS FLORALIA



FINISHED SIZE | 61" x 69"

FABRIC REQUIREMENTS

| | | |
|-----------------|--------------|-------|
| Fabric A | FUS-F-1008 | ⅓ yd. |
| Fabric B | PE-404 | ⅓ yd. |
| Fabric C | PE-423 | ⅓ yd. |
| Fabric D | PE-417 | ⅓ yd. |
| Fabric E | FUS-F-1000 | ⅓ yd. |
| Fabric F | FUS-F-1003 | FE. |
| Fabric G | FUS-F-1006 | FE. |
| Fabric H | PE-428 | FE |
| Fabric I | FUS - F-1005 | ⅛ |
| Fabric J | PW - 428 | ⅞ |

BACKING FABRIC

| | | |
|-----------------|------------|--------|
| Fabric I | FUS-F-1005 | ¾ yds. |
|-----------------|------------|--------|

(Suggested)

CUTTING DIRECTIONS

¼" seam allowances are included.

- Fabric **A**:
- Cut one (1) 18 ½ x 2 ¼' strip
- Cut one (1) 20 x 4 strip
- Cut two (2) 14 x 3½' strips
- Cut one (1) 7 ½' x 4½' strip
- Fabric **B**:
- Cut one (1) 18 ½ x 3 strip
- Cut one (1) 18 ½ x 2 strip
- Fabric **C**:
- Cut one (1) 18½ x 1½' strip
- Fabric **D**:
- Cut one (1) 18½' x 1 ½' strip
- Cut one(1) 10 x 3 ½ strip
- Cut one (1) 3 ½ x 4 ½' strip
-

XX

- Fabric **E**:
- Cut one (1) 11½' x 2" strip
- Cut one (1) 11½' x 5" strip
- Fabric **F**:
- One (1) 4' x 9' strip
- Cut one (1) 7 ½' x 5" strip
- Cut one (1) 7½ x 2" strip
- Fabric **G**:
- Cut one (1) 14 ½' x 7' strip
- Fabric **H**:
- Cut one (1) 7 x 4½" strip
- Fabric **I**:
- Cut one (1) 7 x 20" strip
- Fabric **J**:
- Cut one (1) 18½' in square.
- Cut one (!) 20½' in square.

CONSTRUCTION

Sew all rights sides together with ¼" seam allowance.

- Pillow A 18" x 18" inches:



• (Complete piece)

DIAGRAM 1

- You will attach fabric **A, B, C, D, E, F** strips creating the bottom layer of your center front pillow.
- One (1) 18 ½ x 2 ¼' strip from fabric **A**
- One (1) Cut one (1) 18 ½ x 2 strip from fabric **B**
- One (1) 18½ x 1½' strip from fabric **C**
- One (1) 18½' x 1 ½' strip from fabric **D**
- One (1) 11½' x 2" strip from fabric **E**
- One (1) 11½' x 5" strip from fabric **E**
- One (1) 4' x 9' strip from fabric **F**

- Cut one (1) $7\frac{1}{2} \times 5'$ strip from fabric **F**
- Cut one (1) $7\frac{1}{2} \times 2'$ strip from fabric **F**
- Refer to the diagram below for fabric placement and attachment.

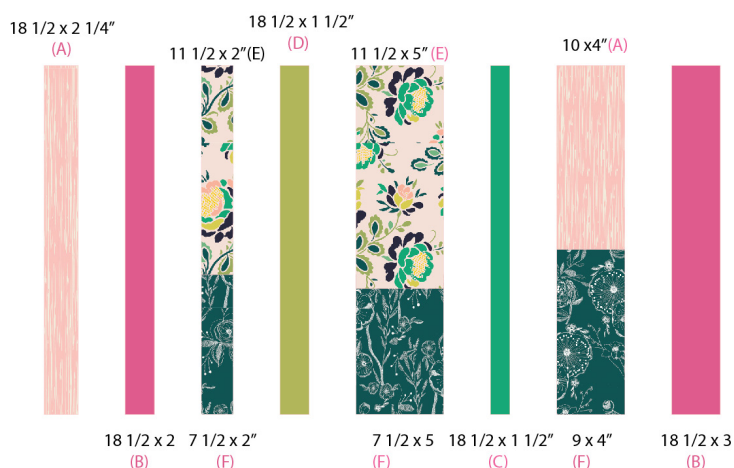


DIAGRAM 2

- Once everything is attached together cut a $19'$ square of bathing and stitch facing the wrong side of the block.
- Start creating the top layer; Use your fabric **J** $18'$ square
- Follow the instructions to build your flower bouquet template in paper and transfer it to fabric. (Refer to last page for more guidance).
- Use tape to build the template. Once the template is taped together pin it to fabric **J** to give some stability.
- You can use a light box below fabric **J** and trace template **1** with a fabric pen (Make sure you mark the fabric with a FABRIC pen so the fabric is not damaged).
- If you don't have a light box, don't worry, it will take a bit longer but you can cut the flower bouquet and use it as a stencil.
- Now you are done with pillow **A** top and bottom layers. Start with pillow **B**.



(complete piece)

DIAGRAM 3

- Attach fabrics **A, D, G, H, I** strips.
- two (2) $14 \times 3\frac{1}{2}$ strips from fabric **A**
- One (1) $10\frac{7}{2} \times 4\frac{1}{2}$ strip from fabric **A**
- One (1) $10 \times 3\frac{1}{2}$ strip from fabric **D**
- One (1) $3\frac{1}{2} \times 4\frac{1}{2}$ strip from fabric **D**
- One (1) $14\frac{1}{2} \times 7$ strip from fabric **G**:
- One (1) $7 \times 4\frac{1}{2}$ strip from fabric **H**
- Cut one (1) $7 \times 20\frac{1}{2}$ strip from fabric **I**
- Refer to the diagram below for fabric placement and attachment.

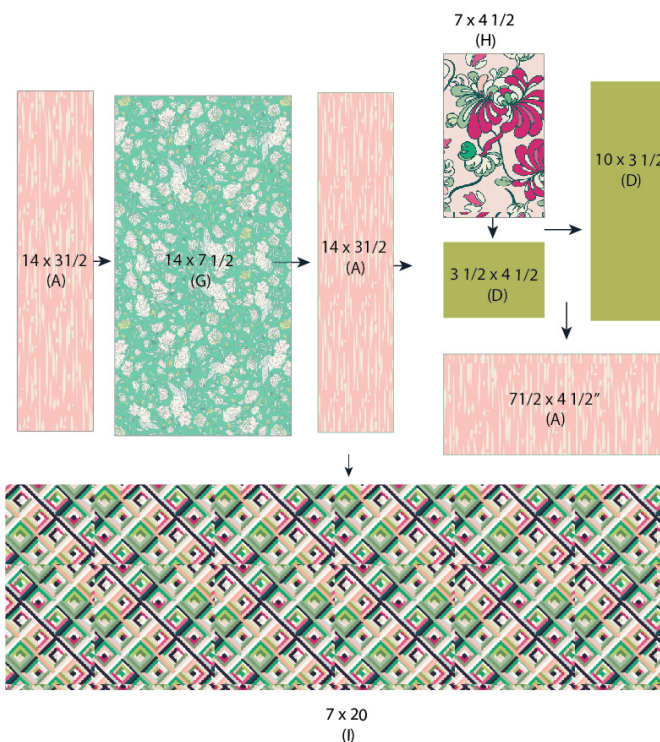


DIAGRAM 4

- Once everything is attached together cut a $22'$ square of bathing and stitch facing the wrong side of the block.
- Start creating the top layer; Use your fabric **J** $20'$ square.
- Follow the instructions to build your flower bouquet template in paper and transfer it to fabric. (Refer to last page for more guidance).

FINAL ASSEMBLY

Sew rights sides together.

- These pillow has an envelope style back. Lay your pillow top right side facing up and layer the back pieces on top, right sides facing down. Make sure the hemmed edges are overlapping each other and match the top and back edges of fabric **J** together.
- Pin and sew together at 1/4" seam allowance.
- Flip right side out, making sure the corners are turned out nicely and stuff with your 18 x 18" and 20 x 20" pillows
- Congrats! Time to snuggle up with your new blooming pillows!

QUILT ASSEMBLY

Sew rights sides together.

- Pin the two front layers of fabric together and start quilting on top of fabric **J** the floral bouquet and leaves you marked before.
- Start quilting along the marked lines, shaping the floral designs. Remember that quilting motifs are a matter of personal preference and you can play with colored threads and create more details to add more dimension to your pillows.
- After you finished, trim excess of any fabric or batting, squaring the quilt to proceed to bind it.

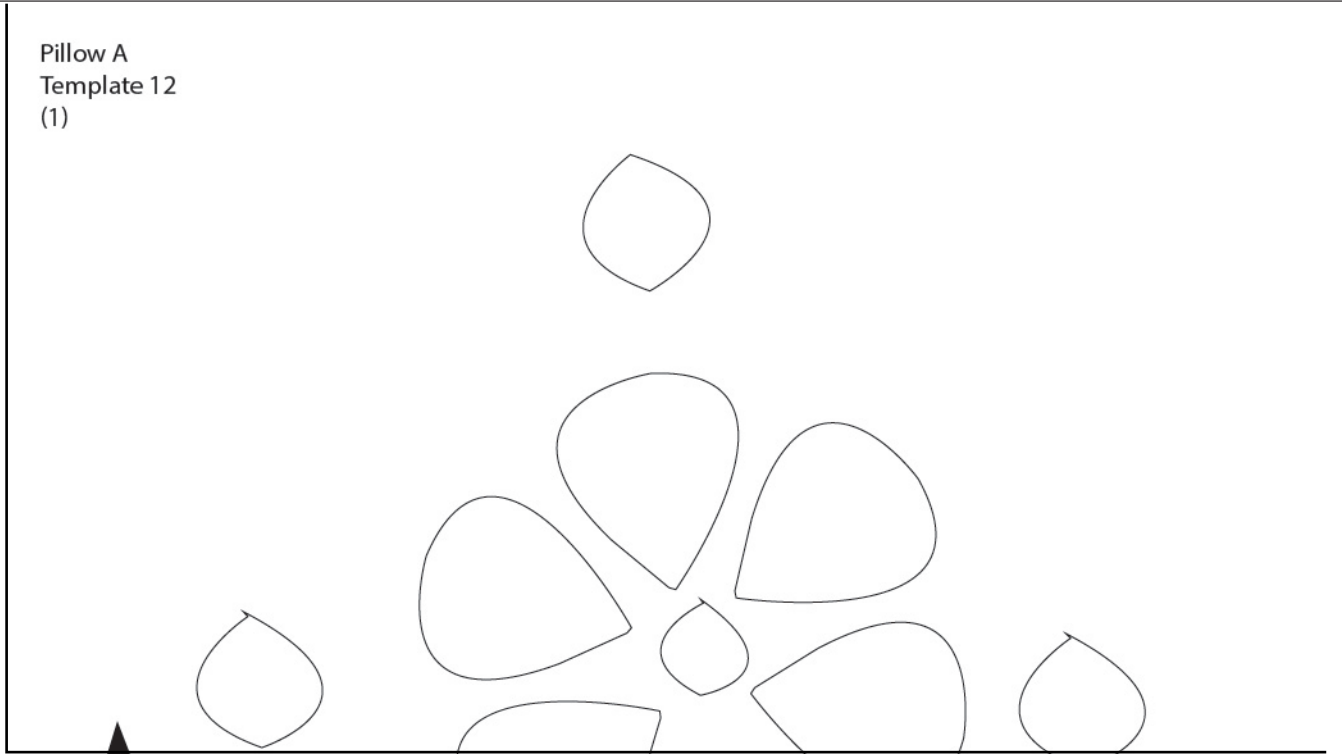
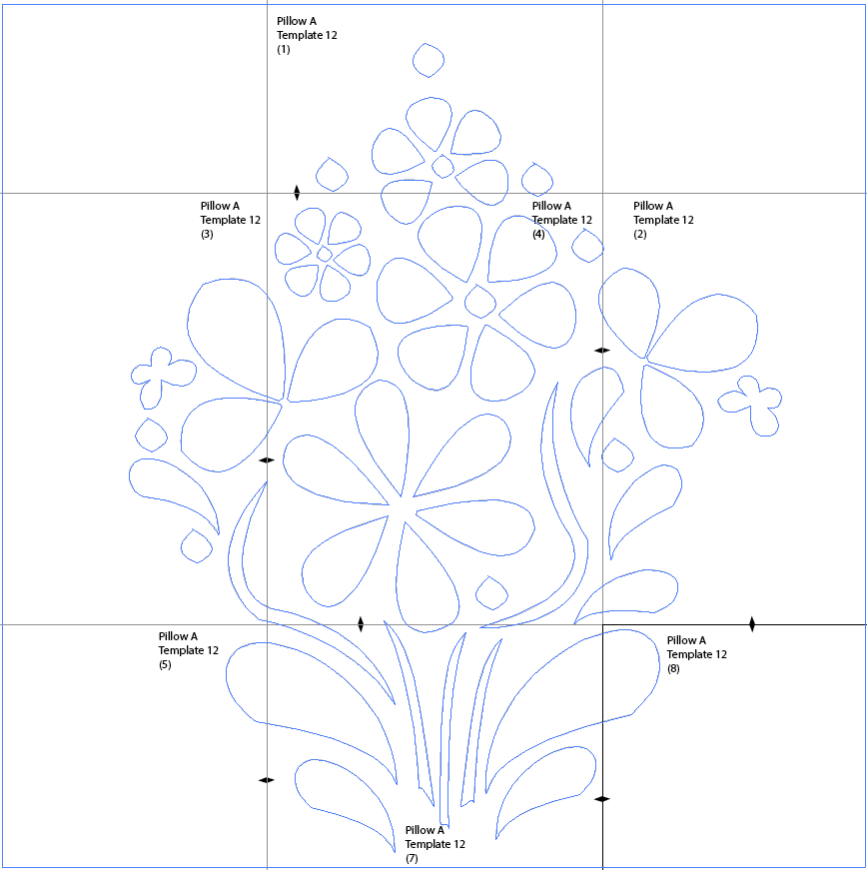


FEEL THE DIFFERENCE

artgalleryfabrics.com

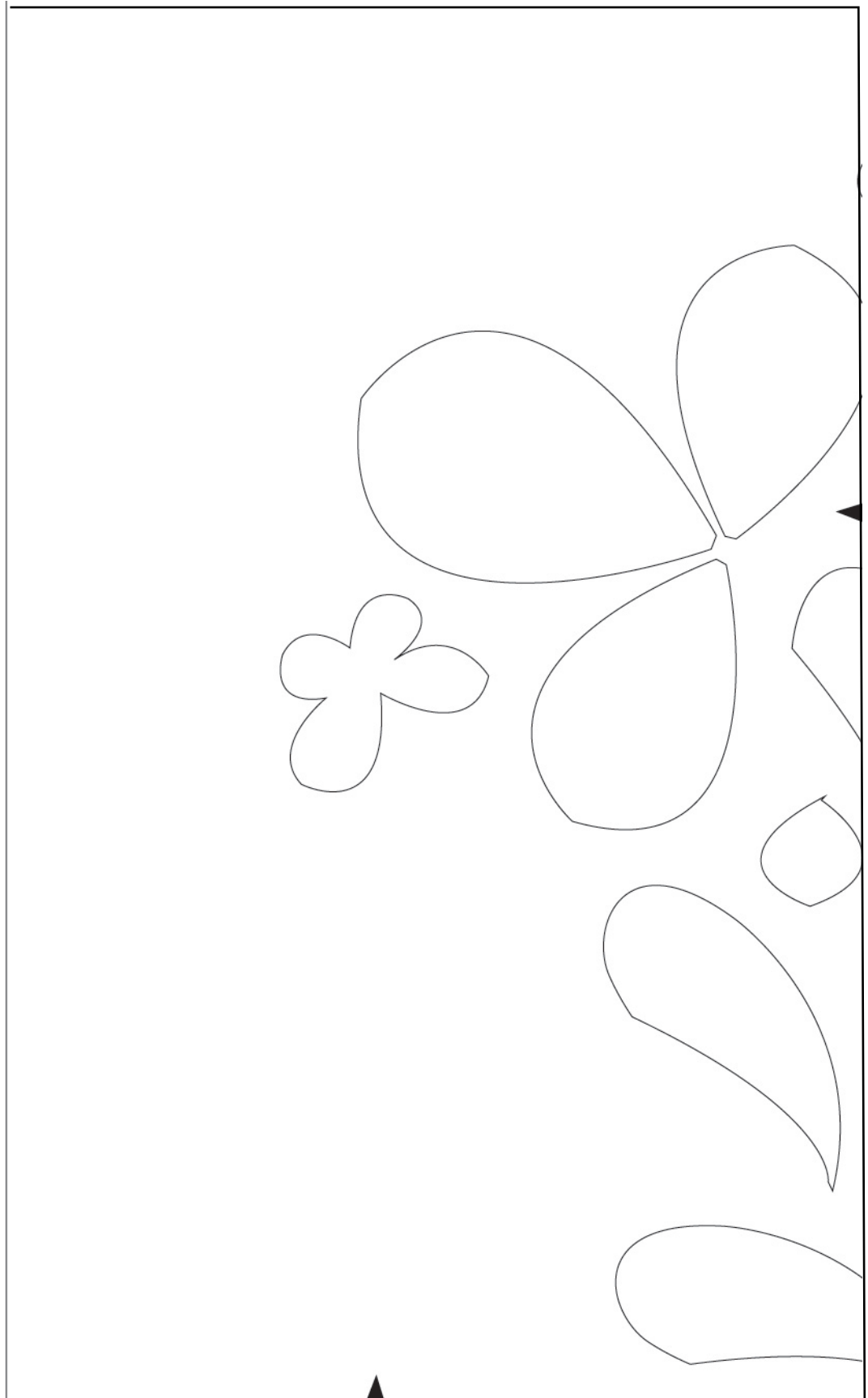
NOTE: While all possible care has been taken to ensure the accuracy of this pattern, we are not responsible for printing errors or the way in which individual work varies. Please read instructions carefully before starting the construction of this quilt. If desired, wash and iron your fabrics before starting to cut.

- Follow the diagram below to tape your template correctly.

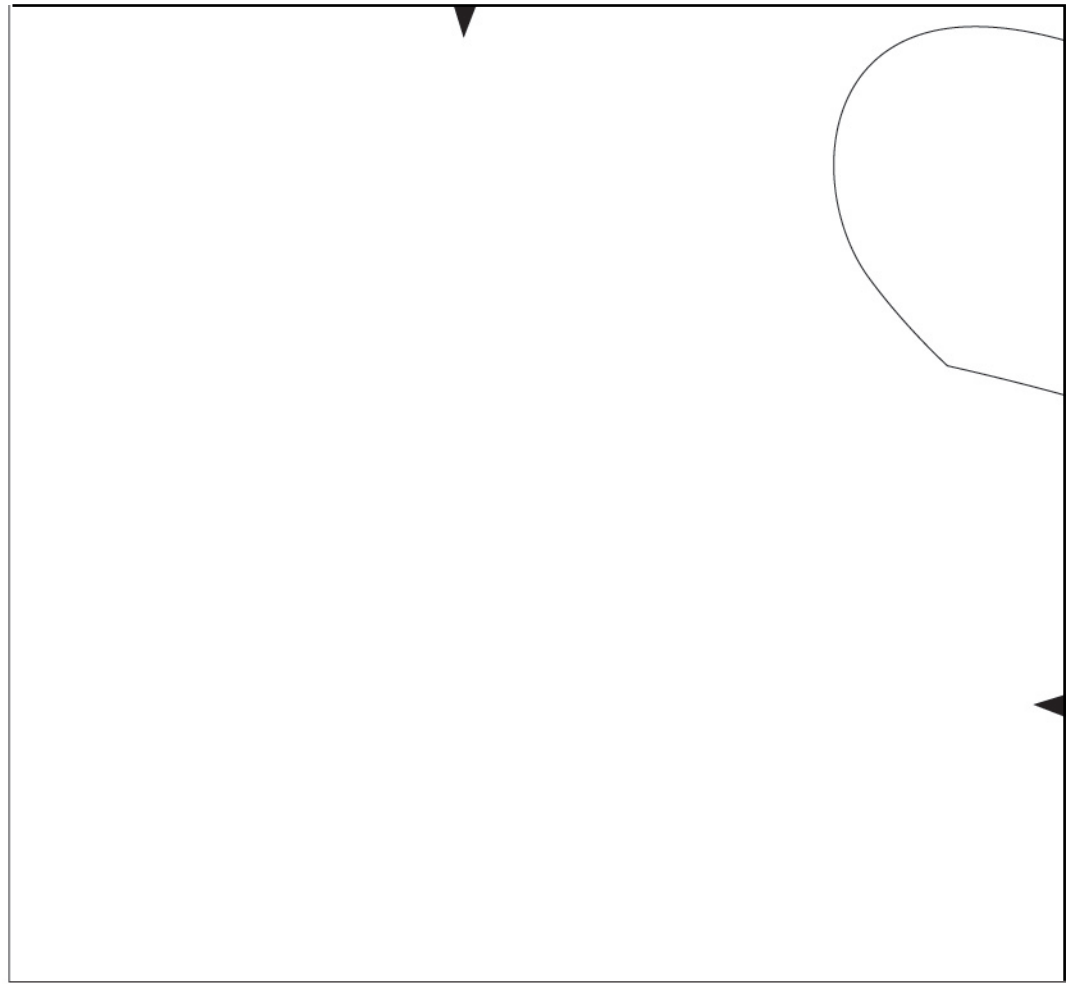


A minimalist line drawing of a plant. It features several large, teardrop-shaped leaves and a small, five-petaled flower. The drawing is positioned on the left side of the page, with a vertical line extending upwards from the bottom left corner.

artgalleryfabrics.com

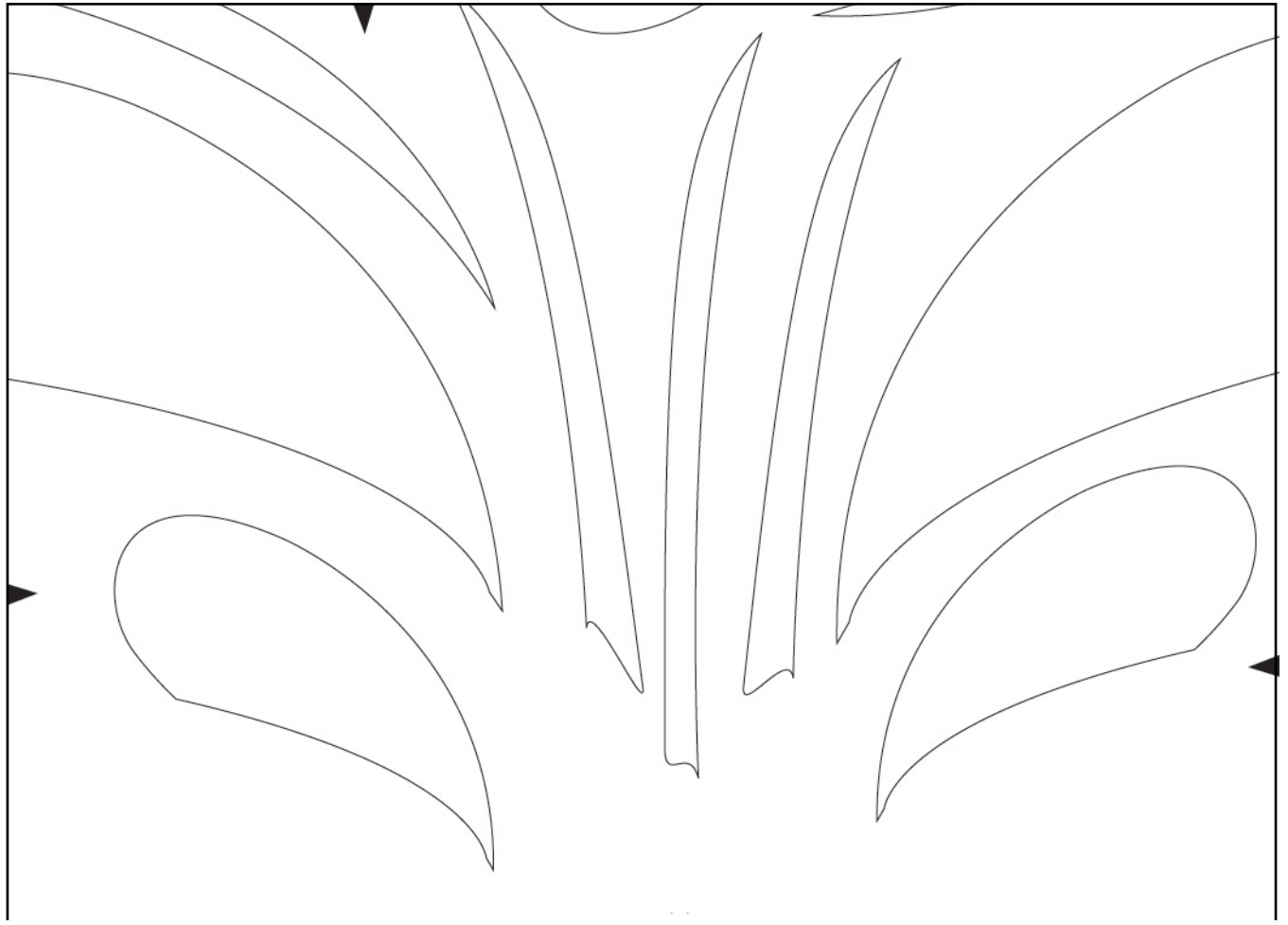


artgalleryfabrics.com

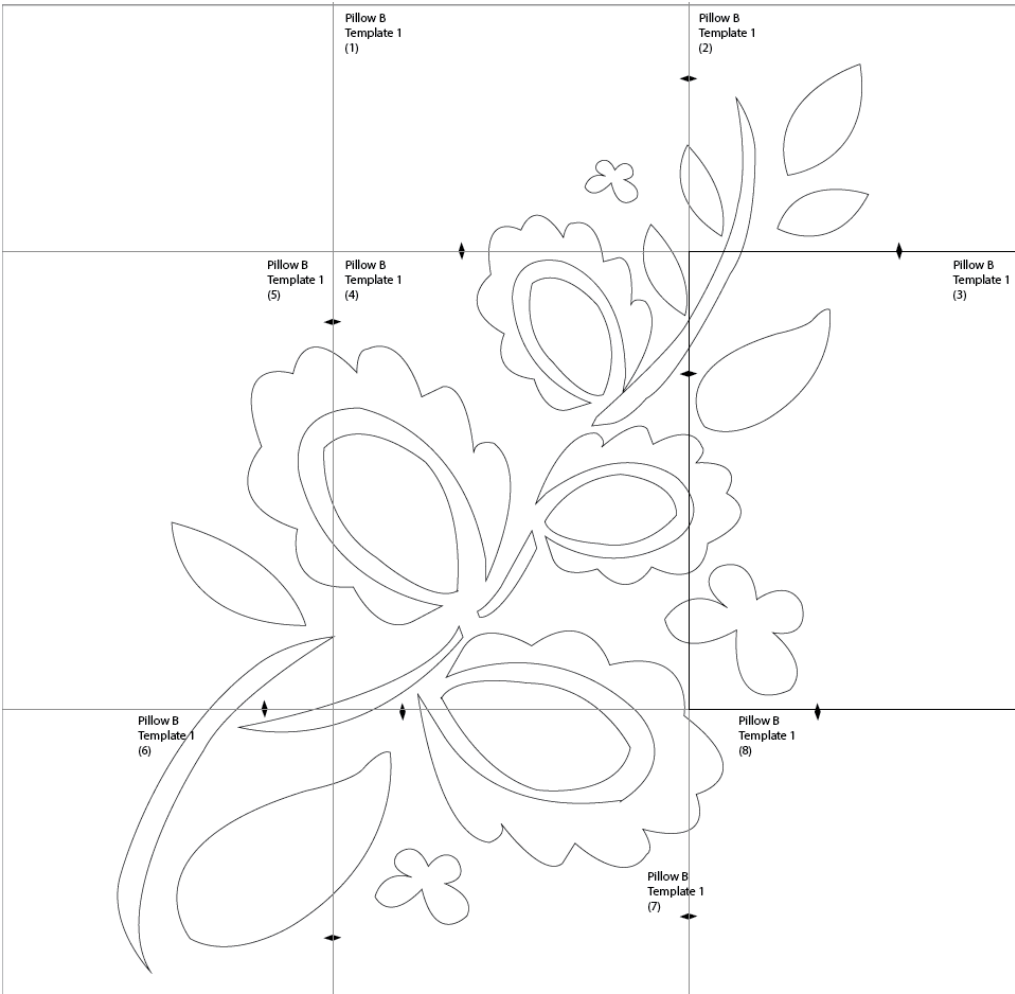


A black and white line drawing of a stylized flower with eight petals, surrounded by various leaves and smaller floral elements. The central flower has a small circle in the middle. There are several large, teardrop-shaped leaves and smaller, more complex floral shapes scattered around it. The drawing is simple and elegant, suitable for a coloring page.

pillow A (7)



• Pillow B Template



pillow B (1)

[illegible]

pillow B (4)





pillow B (6)





artgalleryfabrics.com

