

ANGULAR



FUSIONS

by AGF

FREE PATTERN

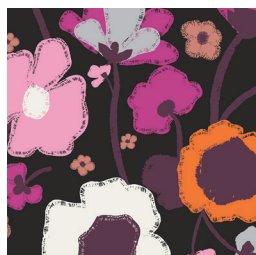
XXXXXXXXXXXXXXXXXXXXXXXXXXXX

ANGULAR

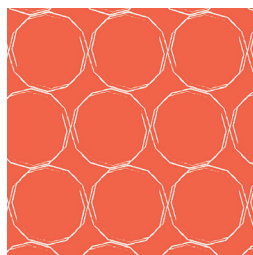
DESIGNED BY AGF STUDIO

cityloft FUSION

FABRICS DESIGNED BY AGF STUDIO



FUS-CL-900
BRAVE BLOOMED CITY



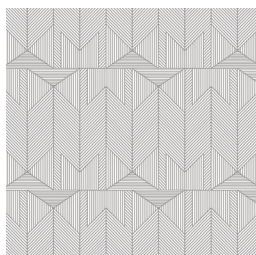
FUS-CL-901
HULA HOOPS CITY



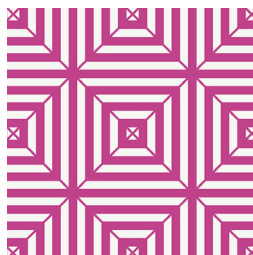
FUS-CL-902
WAVING BUDS CITY



FUS-CL-903
TUNER TUMBLE CITY



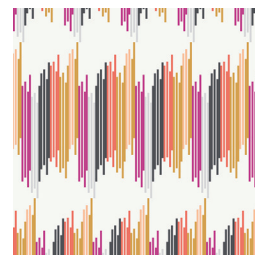
FUS-CL-904
SUBTLE JOURNEY CITY



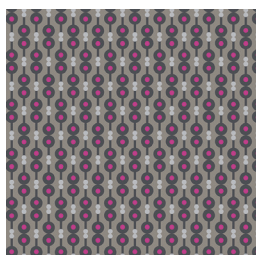
FUS-CL-905
OPTICAL CITY



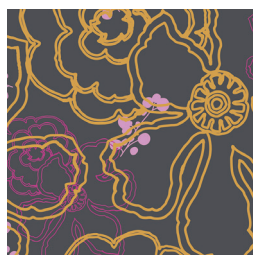
FUS-CL-906
FLUXUS CITY



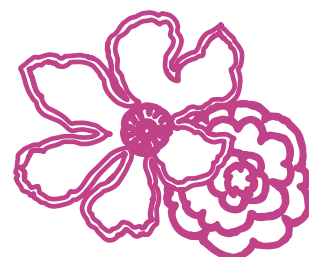
FUS-CL-907
TRÈS STREAKED CITY



FUS-CL-908
RETRO HARMONY CITY



FUS-CL-909
GRAPHIC BLOOMS CITY



FEEL THE DIFFERENCE © 2017 Courtesy of Art Gallery Quilts LLC. All Rights Reserved.

ANGULAR

FINISHED SIZE 11' x 22"

FABRIC REQUIREMENTS

Fabric A	FUS-CL-905	½ yd.
Fabric B	PE-431	FQ.
Fabric C	PE-425	FQ.
Fabric D	FUS-CL-909	¾ yd.
Fabric E	FUS-CL-907	FQ.
Fabric F	PE-430	FE
Fabric G	PE-433	FQ.

BACKING FABRIC

Placemat (1)	pE-431	⅓ yd.
Placemat (2)	PE-430	⅓ yd.
Placemat (3)	PE-425	⅓ yd.

(suggested)

CUTTING DIRECTIONS

¼" seam allowances are included.

Fabric **A**

Cut sixteen (16) strips of 15 x 2"

Fabric **B**

Cut twelve (12) strips of 15 x 1"

Fabric **C**

Cut twelve (12) strips of 15 x 1"

Fabric **D**

Cut twelve (12) 15" x 2" strips

Fabric **E**

Cut four (4) 15" x 2" strips.

Fabric **F**

Cut thirteen (13) 15 x 1" strips.

Fabric **G**

Cut eight (8) 15 x 2" strips.

CONSTRUCTION

Sew all rights sides together with ¼" seam allowance.

Placemat (1) uses fabric **A & B**

To create your placemat use fabric **A** sixteen (16) 15 x 2" strips and fabric **B** twelve (12) 15 x 1" strips

- Attach strips together in the following order creating a block.
- Refer to the diagram below for fabric placement and attachment

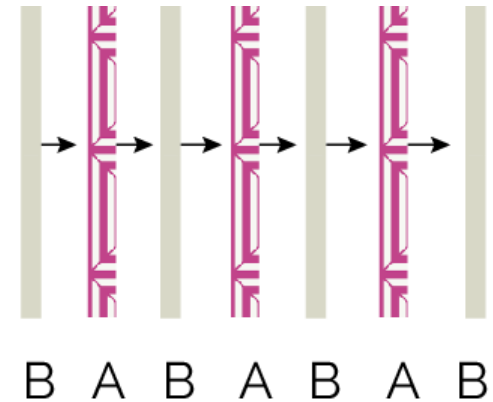


DIAGRAM 1

- Repeat this block four (4) times using all the remaining fabric strips.
- Use templates **1 & 2** to cut out the triangular shape.
- Refer to diagram below for template placement.

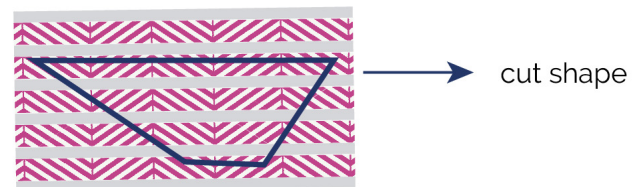


DIAGRAM 2

- Repeat with the rest of the blocks.
- Cut two blocks with template 1 and two blocks with template 2.
- Remember to alternate between template **1 & 2**.

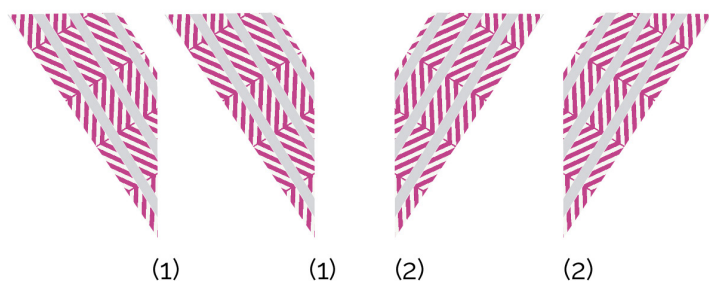


DIAGRAM 3

- Attach template **1 & 2** creating a triangular shape. Repeat one more time with the resting blocks.
- Refer to diagram for fabric placement and attachment



DIAGRAM 4

- Attach everything together and use a medium to heavy weight fusible interfacing to give stability to your placemats.
- *Continue with placemat (2)*
- To create your placemat use fabric **E** four (4) 15 x 2", fabric **F** thirteen (13) 15 x 1" strips and fabric **G** eight (8) 15 x 2" strips.
- Refer to diagram below for fabric placement and attachment.

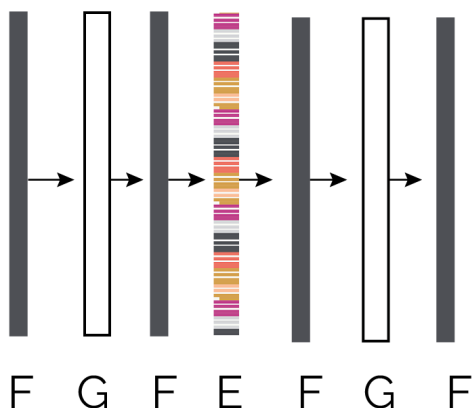


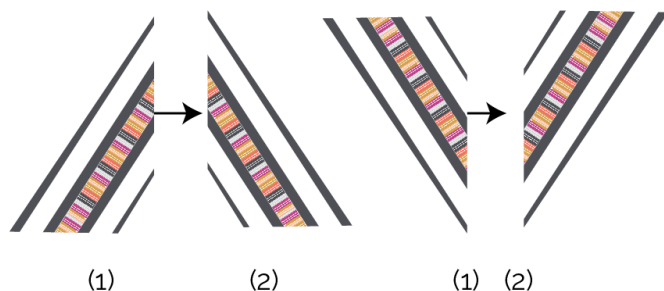
DIAGRAM 3

- Repeat this block four (4) times using all the remaining fabric strips.
- Use templates **1 & 2** to cut out the triangular shape.
- Assemble your quilt top by alternating Fabric **M** (4 1/2" x 60 1/2") strips with quilt block rows. Quilt block rows 2 and 4 are flipped upside down. See diagram for reference.

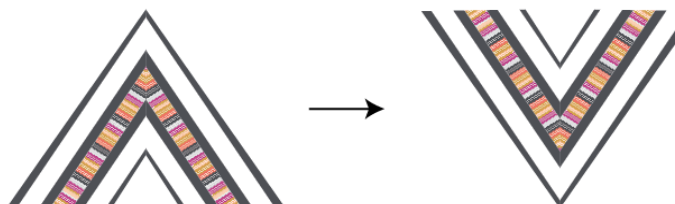
DIAGRAM 4



- Repeat with the rest of the blocks.
- Cut two blocks with template 1 and two blocks with template **2**.
- Remember to alternate between template **1 & 2**.



- Attach template **1 & 2** creating a triangular shape. Repeat one more time with the resting blocks.
- Refer to diagram for fabric placement and attachment.



- Attach everything together and use a medium to heavy weight fusible interfacing or bathing to give stability to your placemats.
- Attach the your fabric backing (we used fabric **F**) and give it a quilt motif and voila! you are done.

- *Continue with placemat (3)*
- To create your placemat use fabric **C** twelve (12) 15 x 1", fabric **D** twelve (12) 15 x 2" strips.
- Refer to diagram below for fabric placement and attachment.

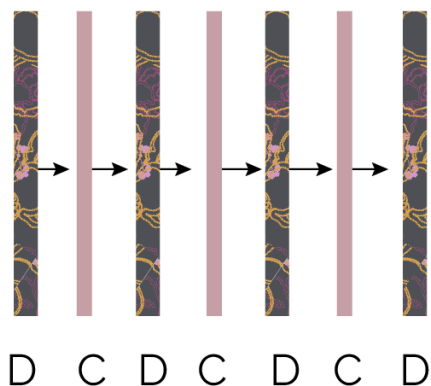


DIAGRAM 7

- Repeat this block four (4) times using all the remaining fabric strips.
- Use templates **1 & 2** to cut out the triangular shape.

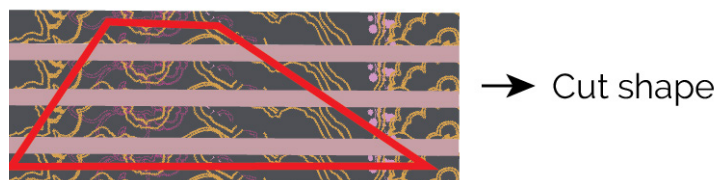


DIAGRAM 8

- Repeat with the rest of the blocks.
- Cut two blocks with template **1** and two blocks with template **2**.
- Remember to alternate between template **1** & **2** .

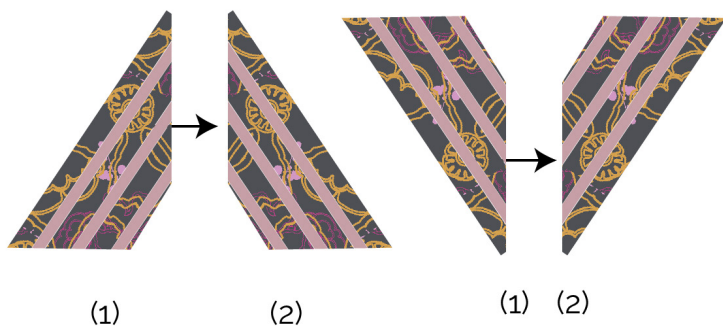


DIAGRAM 9

- Attach template **1 & 2** creating a triangular shape. Repeat one more time with the resting blocks.
- Refer to diagram for fabric placement and attachment.

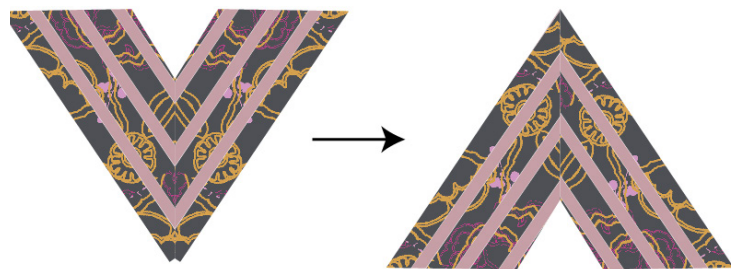


DIAGRAM 10

- Attach everything together and use a medium to heavy weight fusible interfacing or bathing to give stability to your placemats. .
- Attach the your fabric backing (we used fabric C) and give it a quilt motif and voila! you are done .

QUILT ASSEMBLY

Sew rights sides together.

- Place BACKING FABRIC on a large surface wrong side up. Stretch it with masking tape against that surface.
- Place BATTING on top of backing fabric.
- Place TOP on top of the batting with right side facing up. Smooth away wrinkles using your hands.
- Pin all layers together and baste with basting thread, using long stitches. You can also use safety pins to join the layers.
- Machine or hand quilt starting at the center and working towards the corners. Remember that quilting motifs are a matter of personal preference. Have fun choosing yours!
- After you finished, trim excess of any fabric or batting, squaring the quilt to proceed with the backing.

FINAL ASSEMBLY

Sew rights sides together.

- Place your placemat front side over the backing fabric.
- Cut the same shape for backing.
- Place BACKING FABRIC on a large surface wrong side up. Stretch it against the front of your placemat.
- Attach with $\frac{1}{4}$ " seam allowance right sides facing together, leave a 4 to 4" in opening and flip right side out, making sure the corners are turned out nicely and finally your 11 x 22" placemats should be ready! Enjoy!



FEEL THE DIFFERENCE

artgalleryfabrics.com

NOTE: While all possible care has been taken to ensure the accuracy of this pattern, We are not responsible for printing errors or the way in which individual work varies. Please read instructions carefully before starting the construction of this quilt. If desired, wash and iron your fabrics before starting to cut.

© 2017 Courtesy of Art Gallery Quilts LLC. All Rights Reserved.





template 1

template 2