

XXXXXX



FUSIONS
by AC

FREE PATTERN

XXXXXXXXXXXXXXXXXXXX

MANHATTAN

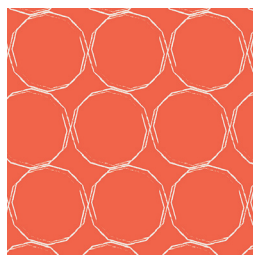


cityloft FUSION

FABRICS DESIGNED BY AGF STUDIO



FUS-CL-900
BRAVE BLOOMED CITY



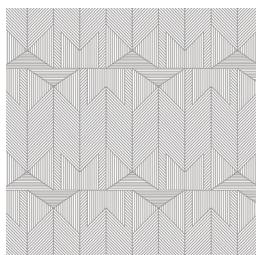
FUS-CL-901
HULA HOOPS CITY



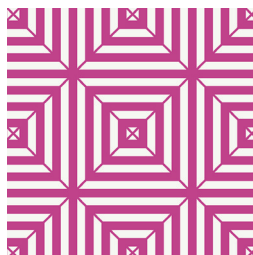
FUS-CL-902
WAVING BUDS CITY



FUS-CL-903
TUNER TUMBLE CITY



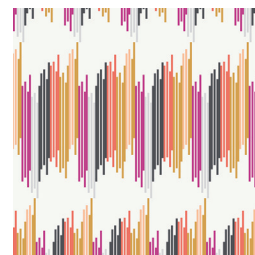
FUS-CL-904
SUBTLE JOURNEY CITY



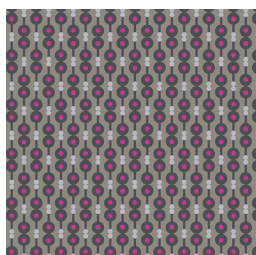
FUS-CL-905
OPTICAL CITY



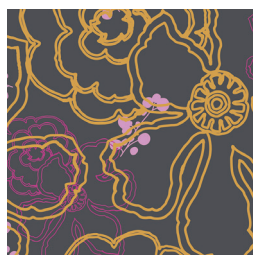
FUS-CL-906
FLUXUS CITY



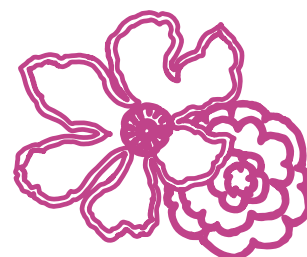
FUS-CL-907
TRÈS STREAKED CITY



FUS-CL-908
RETRO HARMONY CITY



FUS-CL-909
GRAPHIC BLOOMS CITY



FEEL THE DIFFERENCE © 2017 Courtesy of Art Gallery Quilts LLC. All Rights Reserved.

MANHATTAN

FINISHED SIZE | 13' x 10½' x 5"

FABRIC REQUIREMENTS

Fabric **A** PE-413 7/8 yd.
Fabric **B** FUS-CL-g08 ½ yd.

LINING FABRIC
PE-413- Included

Additional Material

One (1) Magnetic snaps
Four (4) Circle Rings

CUTTING DIRECTIONS

¼" seam allowances are included.

Two (2) of Pattern 2 from Fabric **A**

Two (2) of Pattern 1 from Fabric **B**

Four (4) 6½" perfect square from Fabric **A**

Two (2) 11" x 5" rectangles from Fabric **A**

One (1) 13½" x 5" rectangle from Fabric **A**

One (1) 3" x 32" strip from Fabric **A (handle)**

One (1) 3" x 17" strip from Fabric **A (handle)**

Two (2) 3" x WOF strips from Fabric **B**

One (1) 5" x 9 1/2" rectangle from Fabric **B (drop-in pocket)**

One (1) 7" x 9½" rectangle from Fabric **B (zipper pocket)**

CONSTRUCTION

Sew all rights sides together with ¼" seam allowance.

- Start by applying Pattern 2 triangle, wrong side facing down, to Pattern 1 piece, right side facing up.
- Fold the edges and topstitch all the sides
- Repeat same process for the other side of the bag.

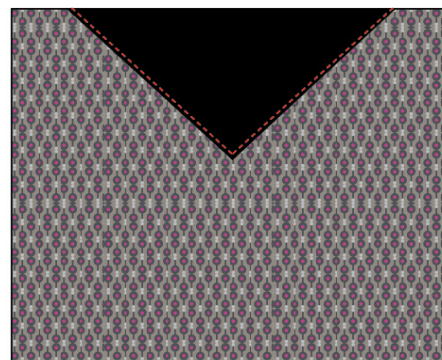


DIAGRAM 1

- Now, cut right on the diagonal of your 6½ perfect square from Fabric **A** in order to create your HST
- Take one HST and place it on the bottom right of Fabric **B** piece.(diagram 2)

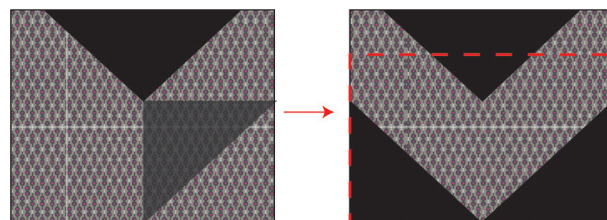


DIAGRAM 2

- Repeat same process for the other HST.
- Then, repeat same process for the other side of the bag

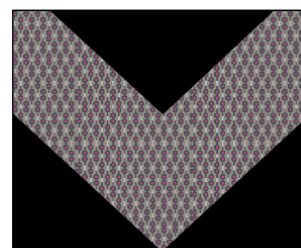


DIAGRAM 3

- Quilt as desired
- Trim to an 13½ x 11" rectangle

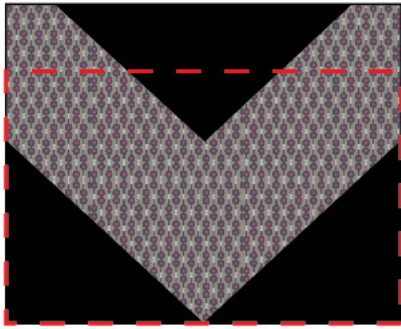


DIAGRAM 4

- For the side panels, take one (1) 11" x 5" rectangle and make a mark as diagram below in order to create your bottom holes

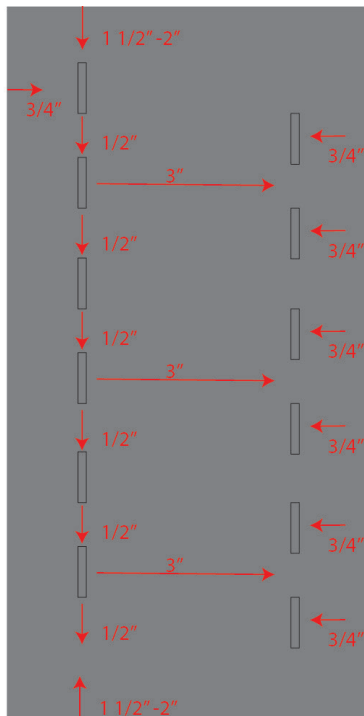


DIAGRAM 5

- Repeat the same process for the other side panel
- Create the bottom holes where you will pass thru the Fabric **B** strips

- Take the WOF strip from Fabric B and start to lace through each bottom hole.
- Make sure you pin the beginning of the strip at the edge of the panel.
- When you get to the end, trim the extra strip and pin at the edge of the panel. Both edges will be attached when you sew the front and back of the bag.

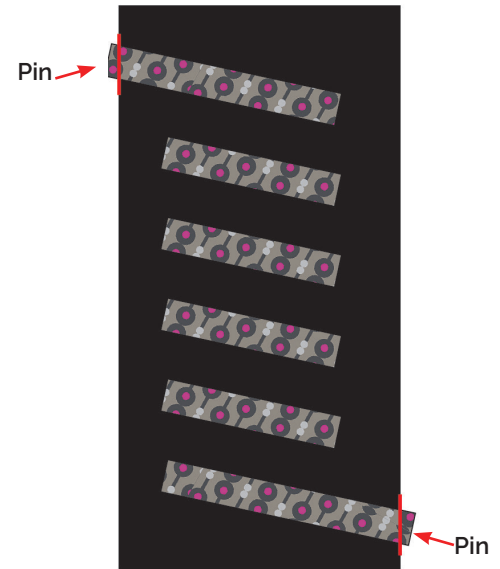


DIAGRAM 6

- Repeat the same process for the other side panel
- Now, take both 11" x 5" and 13½" x 5" Fabric **A** pieces and sew them together to create a long strip.
- Sew it in the following way:



DIAGRAM 7

- Now, take the strip and pin it around the edge of the Front Side of the bag, right sides together.
- Sew.
- Then, take the back side of the bag and pin it with the other edge piece, right sides together.

Pocket Construction- Drop-in Pockets and Welted Pocket

- Take the 5" x 9 ½" Fabric **B** piece and place it on top of the 7" x 9 ½", wrong side facing right side
- Before you pair the pieces, you can create a small edge strip for the top pocket, with fabric **A**.

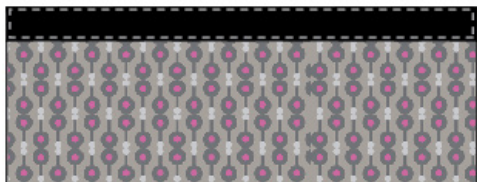


DIAGRAM 8

- Take the edges of Fabric **B** and fold them in and stitch right on the edge to secure the piece.
- Stitch on the middle or more to your right or left in order to create your pockets.

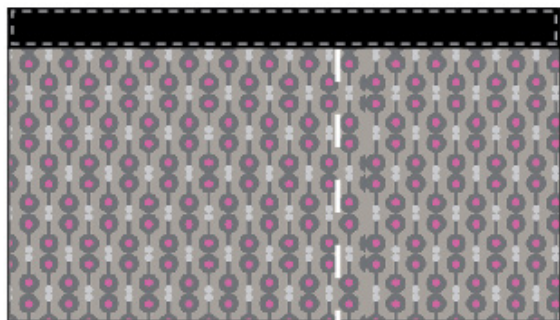


DIAGRAM 9

- Make the markings for the zipper placement on the wrong side of the zippered pocket from previous above piece.
- Lay the zipper pocket facing on top of the marked line of the bag lining (Opposite the patch pocket), right sides together and line up the middle lines of both pieces.
- Stitch around the marked rectangle (on both fabrics). At each corner, put your needle into the fabric, lift your presser foot and pivot or turn the fabric 90 degrees to yield a nice crisp corner.
- Cut along the center marked line on both fabrics, snipping the triangle shapes, out and towards the corners. Be careful NOT to snip through the stitching lines
- Turn the zipper pocket facing towards the back of the lining by pushing it through the cut/snipped hole from step 2.4z. Press.

- Position the zipper behind the newly faced rectangle hole in the lining.
- Pin it in place, from the front.
- Using your sewing machine's zipper foot (presser foot attachment), sew around the rectangle hole, ⅛" from the edge (you will be sewing through the lining, zipper facing, and the zipper tape). Stitch with the right side of the pocket piece facing you. Pivot at the corners.
- Now, take the edges of the pocket piece, fold them in and stitch around the corner with the lining piece, since this will create your inside pocket

Creating the Handles

- Take a 3' x 32' strip from Grey Faux Leather. Fold both long sides of your strip into the center of your strip and then fold in half. (Diagram 10.1 and 10.2) Use wonder clips to hold down the folds in your handle and topstitch both sides of your strap at 1/4". (Diagram 10.3)

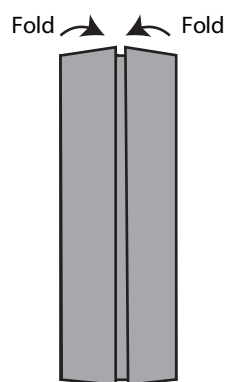


DIAGRAM 10.1

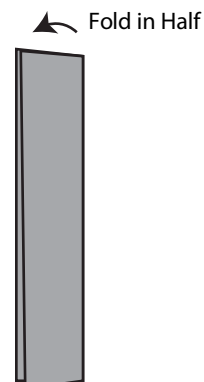


DIAGRAM 10.2



DIAGRAM 10.3

- Repeat this same process with the other 3'x 17 1/2' strip from Grey Faux Leather. Place end of handles 5' in from the side of your front and back bag. Stitch into place at 1/4'. (Diagram 4)



DIAGRAM 11

Creating Strap Extenders and Strap

- Take a 1 1/2' x 5 1/2' strip from Grey Faux Leather and fold in half wrong sides touching and topstitch each side of your extender. (Diagram 12.1)
- Thread a 1' circle ring through strap extender and fold in half with short ends touching and stitch in place at 1/4'. (Diagram 12.2)
- Place the strap extenders at the center of your side panel and stitch into place at 1/4'. (Diagram 12.3)
- Repeat same process for the other strap extender.

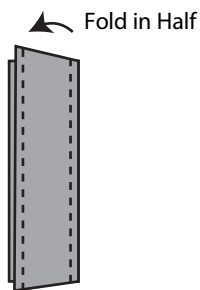


DIAGRAM 12.1

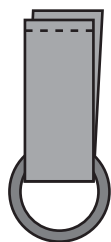


DIAGRAM 12.2



DIAGRAM 12.3

- Next take a 1 1/2' x 32' strip from Grey Faux Leather and fold in half wrong sides together and topstitch each side of your strap at 1/4'.
- Thread end of straps through your swivel clasps and pull strap out 2' and stitch a box with an X in it to secure each end of your strap.

Applying the Magnetic Snap

- **Note:** A magnetic snap has two main components, a male side & a female side. The magnetic snap also comes with a backing washer for each component. When you purchase a magnetic snap, you will receive 4 metal pieces in total.
- Find the midpoint of your back and front lining pieces and measure down 2' and place a small 1'x 2' piece of ultra firm stabilizer. Iron stabilizer into place. Mark the 2' mark on top of stabilizer.
- Place a washer on this mark. Mark with a pencil two lines, from top and bottom tracing inside the rectangles on the washer. (Diagram 6)

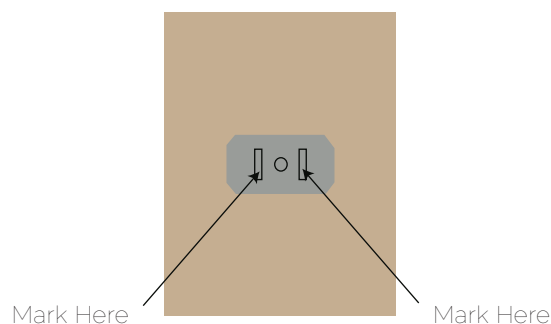
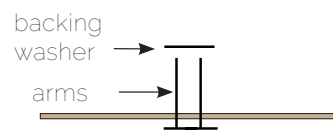


DIAGRAM 6

- Remove the washer and make two slits on those marks using a small pair of sharp scissors.
- Place the arms of the male magnet clasp through the slits from the right side of the strip.



- Put the washer over the arms from the fusible side.
- Using pliers, fold each arm of the clasp out and down in opposite directions around the washer. Make the arms as flat as a possible.

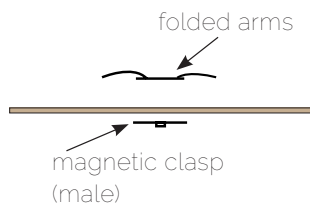


DIAGRAM 8

- To attach the female side of the magnetic snap repeat the same process following Diagram 6-8 with the female magnetic snap.
- Place exterior of bag inside lining making sure right sides are touching and that the straps are out of the way. Pin lining to the exterior of the bag and sew all the way around the top of your bag at 1/2" seam allowance.
- Pull exterior of bag through the unsewn portion in the lining.
- Handstitch or machine stitch unsewn portion.
- Place lining on the inside of your bag and topstitch the top of your bag at 1/4". Attach your strap to the circle rings and your bag is complete!



artgalleryfabrics.com

NOTE: While all possible care has been taken to ensure the accuracy of this pattern, We are not responsible for printing errors or the way in which individual work varies. Please read instructions carefully before starting the construction of this quilt. If desired, wash and iron your fabrics before starting to cut.

© 2017 Courtesy of Art Gallery Quilts LLC. All Rights Reserved.

