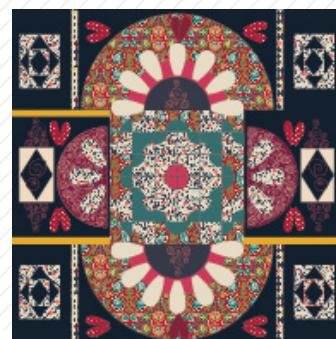


♥ Rosemary's heart ♥



♥ Rosemary's heart ♥

PILLOW DESIGNED BY AGF STUDIO



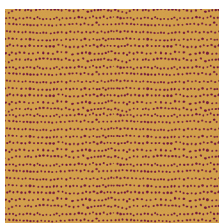
INDIEfolk

FABRICS DESIGNED BY PAT BRAVO

MEMORIES



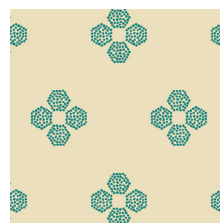
IFL-46300
KHOKHLOMA BURGUNDIA



IFL-46301
FLECKS AUBURN



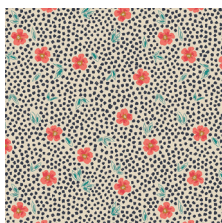
IFL-46302
MEADOW DIM



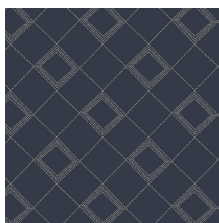
IFL-46303
DROPLET PETAL MALACHITE



IFL-46304
TRINKET VIVID



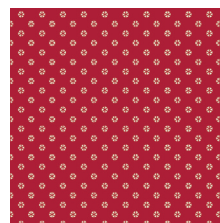
IFL-46305
MIST FLORA LUMINOUS



IFL-46307
TARTAN MIDNIGHT



IFL-46308
VERDANT BLOOM



IFL-46309
WHIRL ROUGE

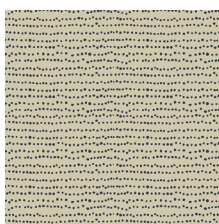


IFL-46310
TRŌJKAT SUNRISE

FABLES



IFL-56300
KHOKHLOMA GLOOM



IFL-56301
FLECKS INDIGO



IFL-56302
MEADOW VIVID



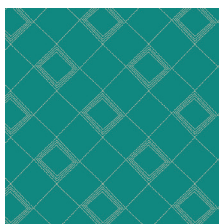
IFL-56303
DROPLET PETAL STORM



IFL-56304
TRINKET BLUSH



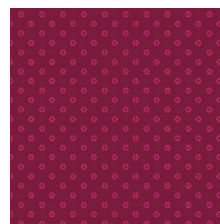
IFL-56306
PATHWAYS RICH



IFL-56307
TARTAN TEAL



IFL-56308
POWDER BLOOM



IFL-56309
WHIRL MAUVE



IFL-56310
TRŌJKAT DESERT



FEEL THE DIFFERENCE © 2015 Courtesy of Art Gallery Quilts LLC. All Rights Reserved.

♥ Rosemary's heart ♥

FINISHED SIZE | 50 1/2 x 50 1/2

FABRIC REQUIREMENTS

Fabric A	IFL-56309	1/4 yd
Fabric B	IFL-46309	FE
Fabric C	IFL-46300	1 yd
Fabric D	IFL-46305	5/8 yd
Fabric E	IFL- 46310	1/8 yd
Fabric F	PE- 436	1/4 yd
Fabric G	PE-405	1/4 yd
Fabric H	PE-421	FE
Fabric I	PE -427	FE
Fabric J	PE-463	FQ
Fabric K	PE-428	4 7/8 yds

BACKING FABRIC

Fabric **K** PE-428 4 7/8 (Included)

CUTTING DIRECTIONS

1/4" seam allowances are included.
WOF means width of fabric.

Fabric **A**:

Cut two (2) from template **2**

Fabric **B**:

Cut sixteen (16) from template **3**

Fabric **C**:

Cut two (2) from template **3**

Cut twelve (12) from template **9**

Cut four (4) from template **10**

Fabric **D**:

Cut six (6) from template **5**

Cut sixteen (16) from template **6**

Cut sixteen (16) from template **7**

Cut four (4) from template **10**

Fabric **E**:

Cut four (4) strips of 1 1/2 x 15 1/2'

Fabric **F**:

Cut eight (8) from template **6**

Cut fourteen (14) from template **5**

Fabric **G**:

Cut two (2) from template **2**.

Cut four (4) from template **10**.



17-5421

XXXXXXXXXXXXXXXXXXXXXXXXXXXX

Fabric **H**:

Cut four (4) strips of 1 1/2' x 15 1/2'

Fabric **I**:

Cut four (4) from template 8 (16) from template **3**

Fabric **J**:

Cut twenty four (24) from template **10**

Fabric **K**:

Cut two (2) rectangles of 15 1/2' x 18 1/2'

Cut four (4) rectangles of 25 3/4' x 16'

Cut two (2) from template 1

CONSTRUCTION

Sew all rights sides together with 1/4" seam allowance.

- Start the center assembly.
Use templates 9 and 10 (you will use fabrics **C, D, G** and **J**).
- Each row should have 6 squares.
Use templates 9 and 10 (you will use fabrics **C, D, G** and **J**).
- Start joining the template **9** squares as the diagram shows.

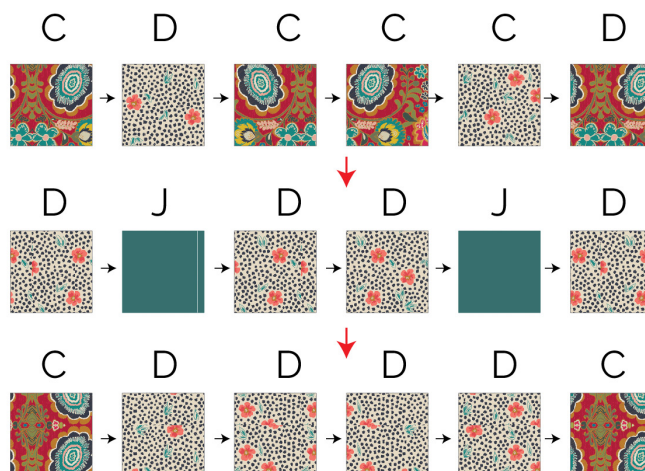
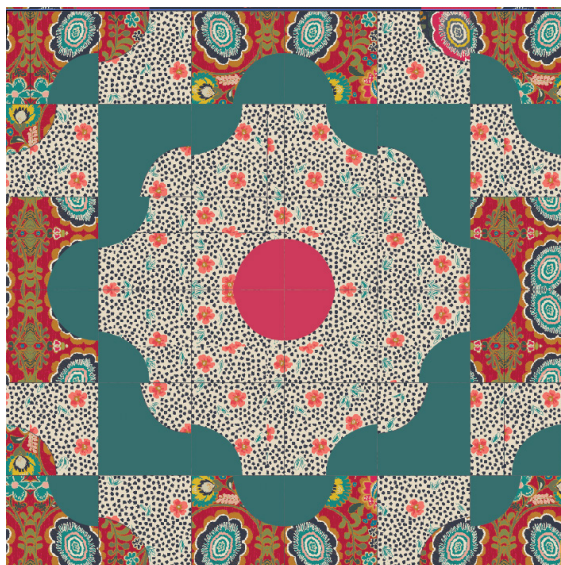


DIAGRAM 1

- Repeat for the bottom side and join the two rectangles.
- Start attaching template 10 applique.
- you can use a zic zac or regular topstitch to join this pieces.
- Refer to the diagram below for correct placement



- Once you place the templates, give them a top stitch around the edges to hold them in place. It would be nice to use contrasting color threads to add dimension to the design.

SIDES

- Continue to join the side pieces.
- You will need the two (2) fabric **K** 15 1/2' x 18 1/2' rectangles.
- You will use templates **2, 3, 5** and **6**.
- You can use steam a seam fusible tape to hold the fabrics in place and also avoid unraveling.
- Follow the diagram below for applique placement.

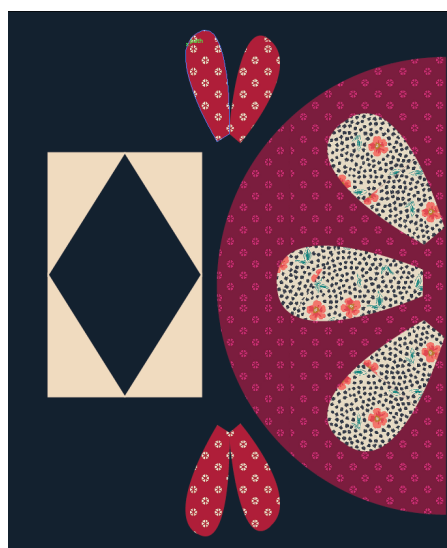


DIAGRAM 3



DIAGRAM 4

TOP AND BOTTOM

Sew all rights sides together with 1/4" seam allowance.

Use fabric **K** 16 x 25 3/4" rectangles and join them creating a 51" in rectangle.

- Create the circular panel using templates **1, 2, 4, 5**.
- Follow the diagram to create two circular panels for top and bottom.

Use fabric **K** 16 x 25 3/4' rectangles and join them creating a 51' in rectangle.

- Create the circular panel using templates **1, 2, 4, 5, 6 and 7**.
- Follow the diagram to create the panels for top and bottom. The numbers show the proper template placement.

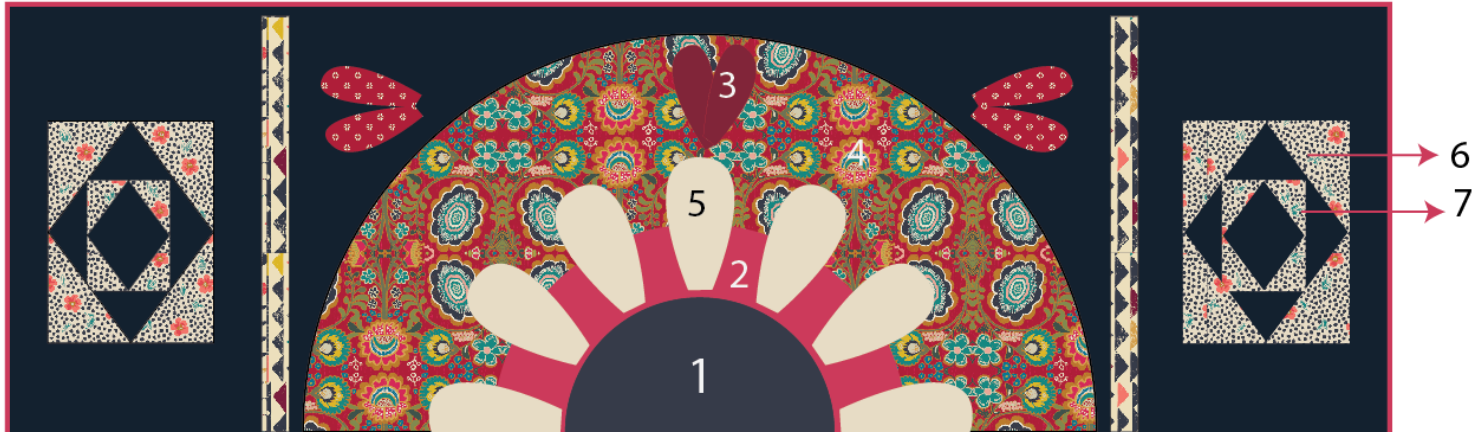


DIAGRAM 4

- Repeat the same for the bottom panel.
- Once everything is placed properly give the appliques a topstitch or zic zac stitch.
- We used the chenille around template **5, 6** and **7** edges to give the wall art some dimension and a touch of folk .

FINAL ASSEMBLY

Sew rights sides together.

- Place BACKING FABRIC on top of the right side of your wall art.
- Pin both layers together and stitch at a 1/4' seamallow-
ance.
- Leave a small opening and flip right side out, making
sure the corners are turned out nicely.
- Hand stitch the opening and your wall art should be
ready, enjoy!

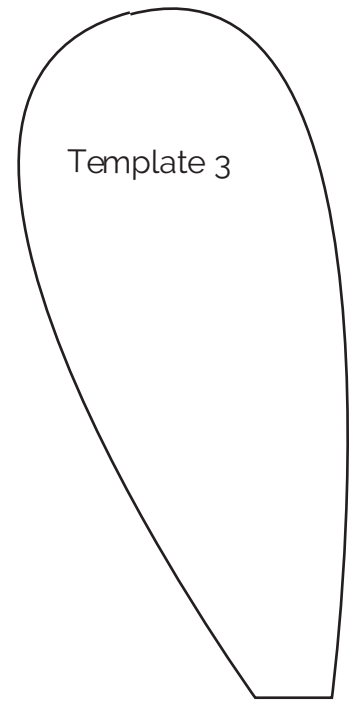
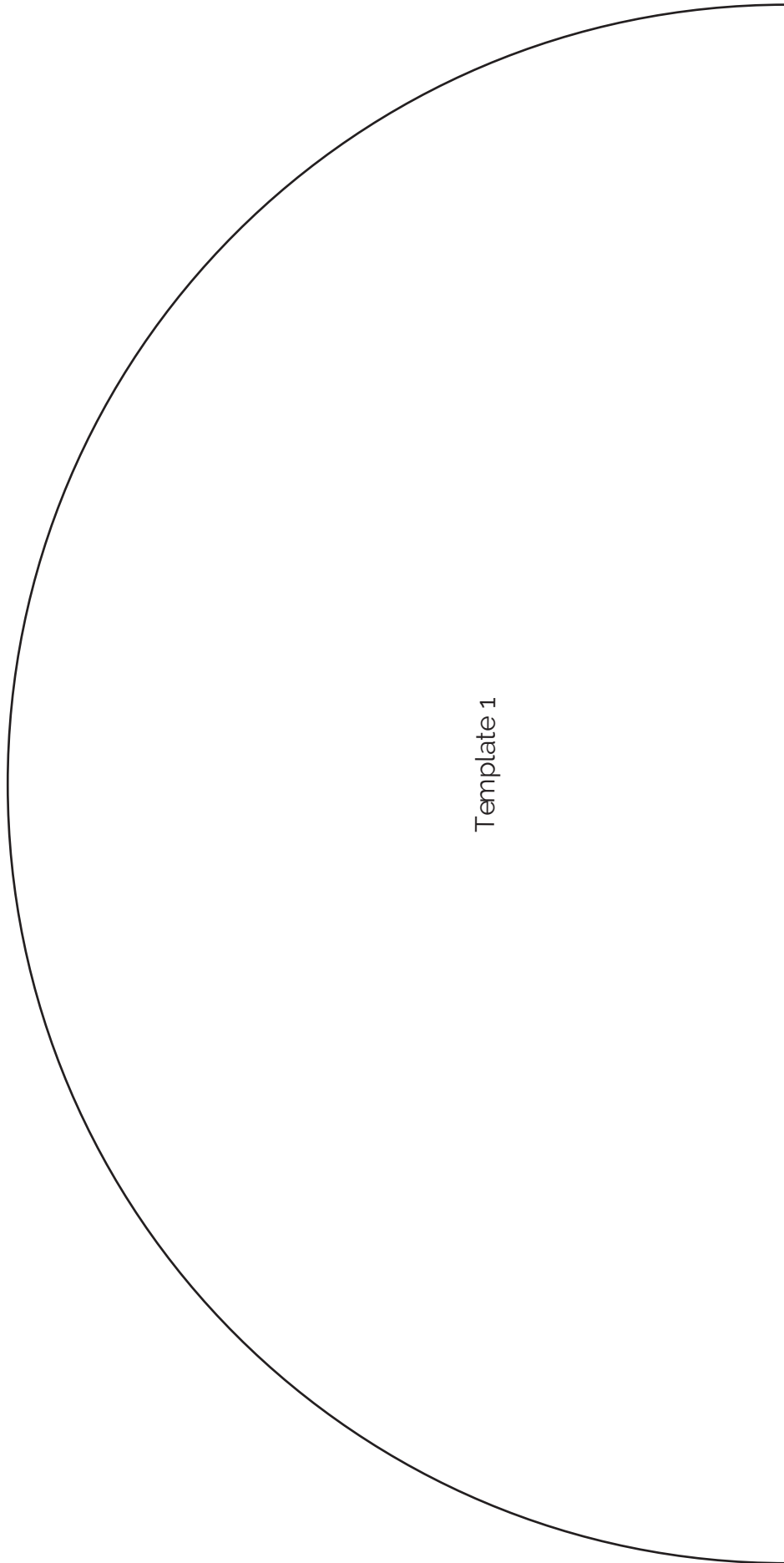


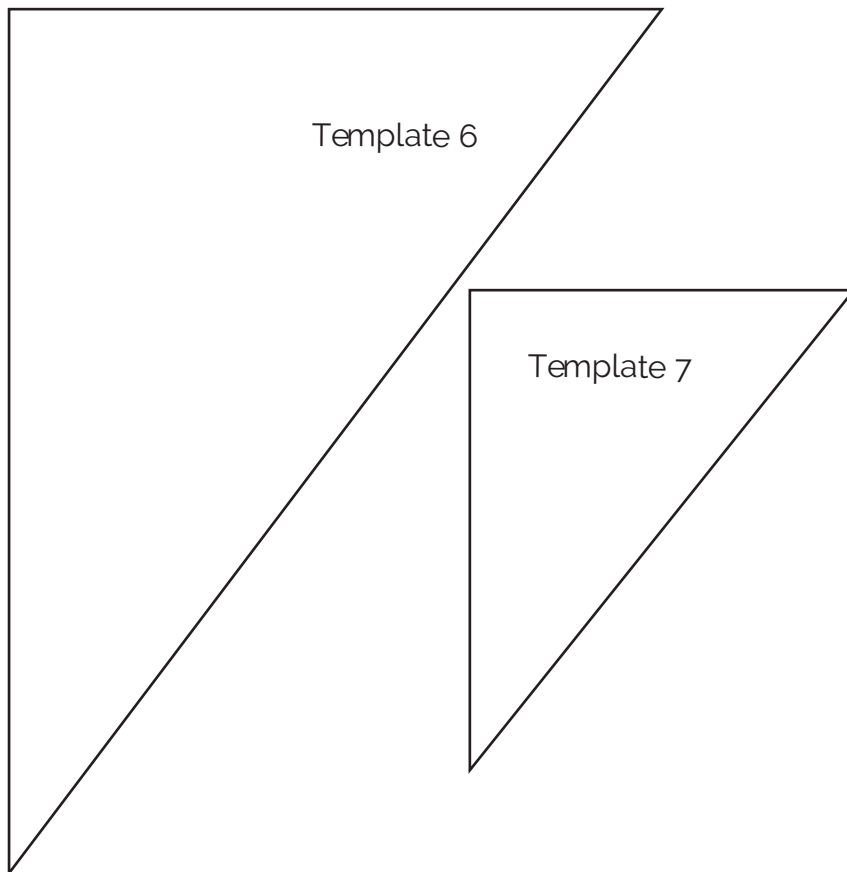
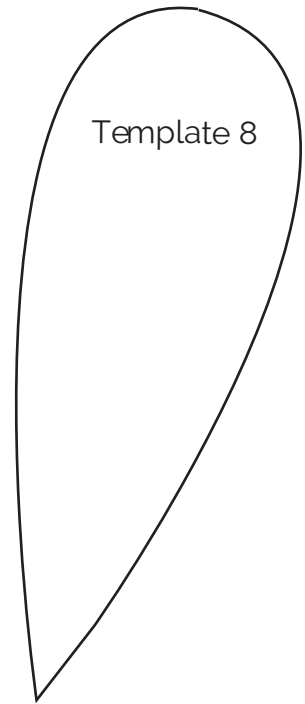
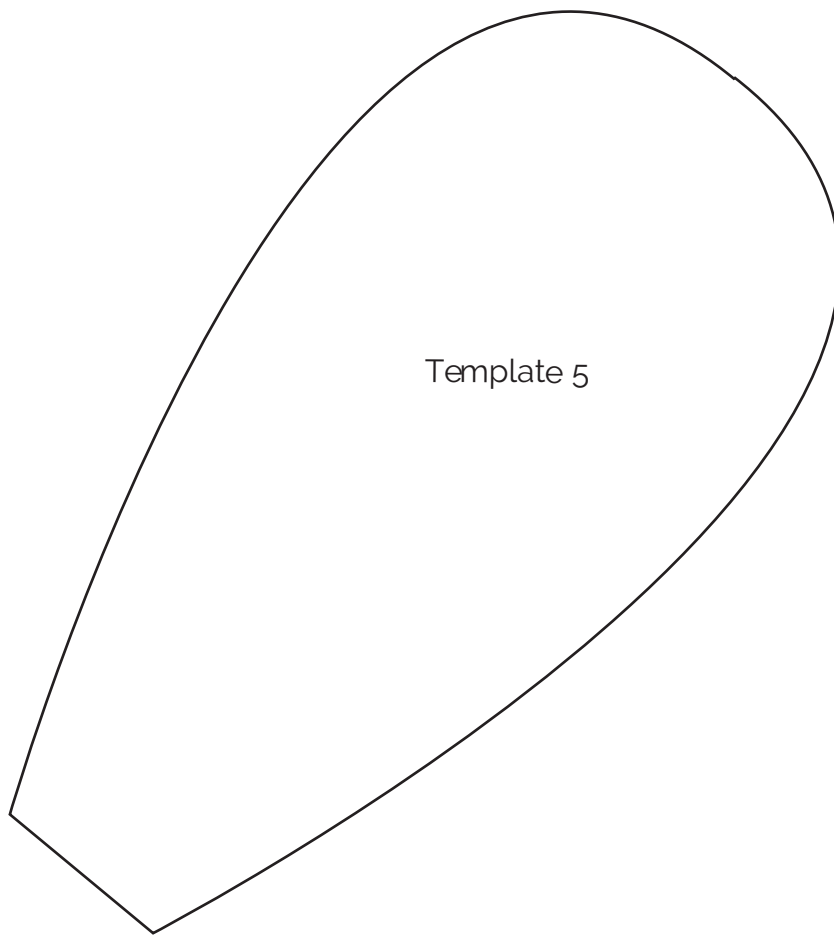
artgalleryfabrics.com

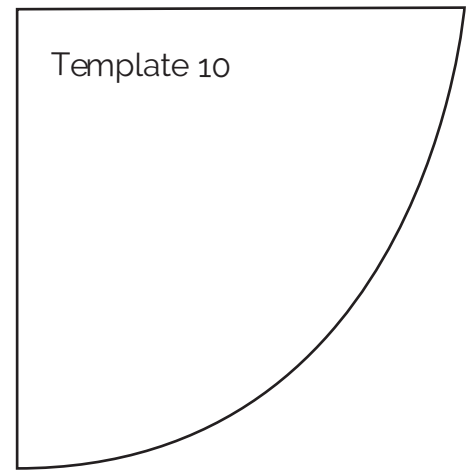
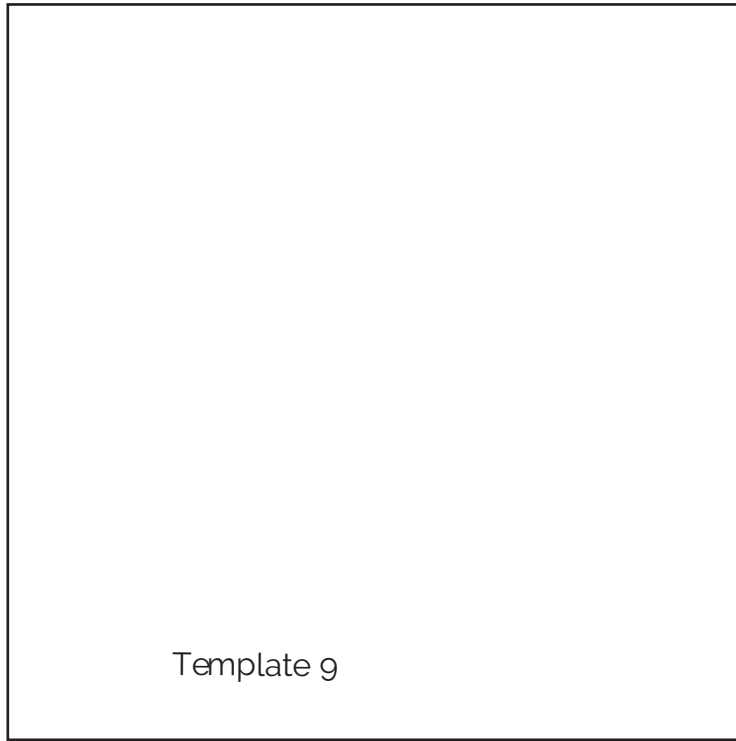
NOTE:

While all possible care has been taken to ensure the accuracy of this pattern, We are not responsible for printing errors or the way in which individual work varies.

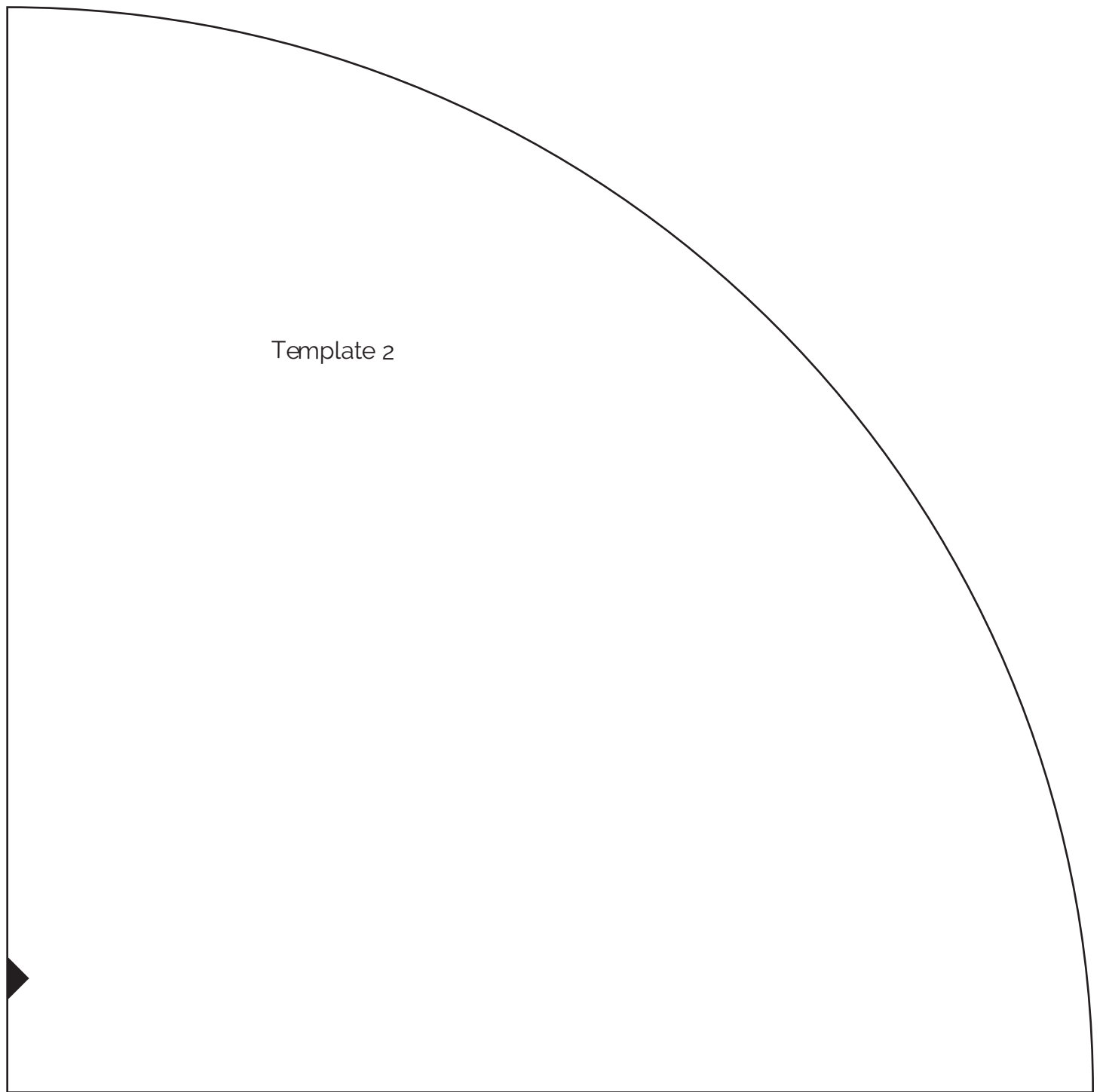
Please read instructions carefully before starting the construction of this quilt. If desired, wash and iron your fabrics before starting to cut.

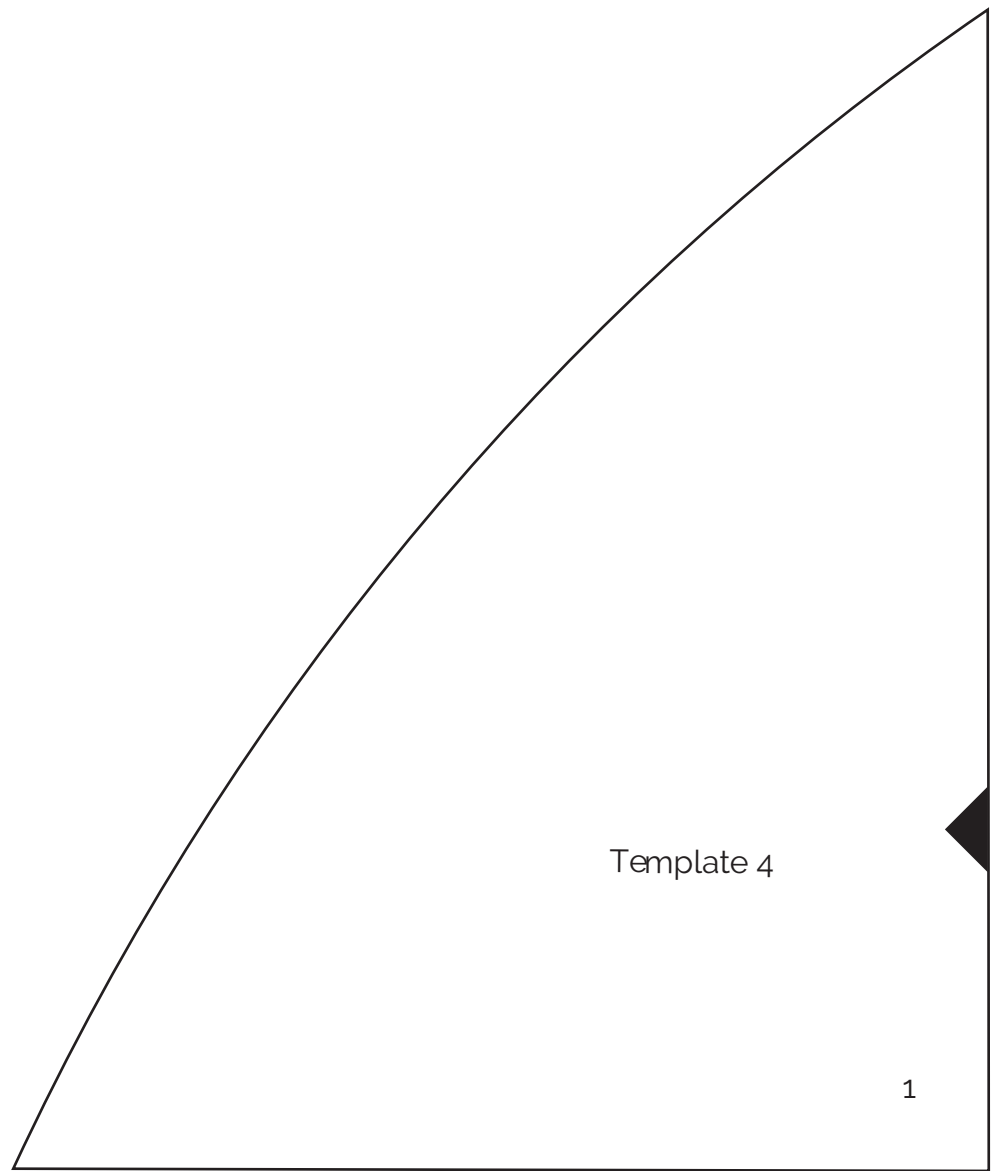




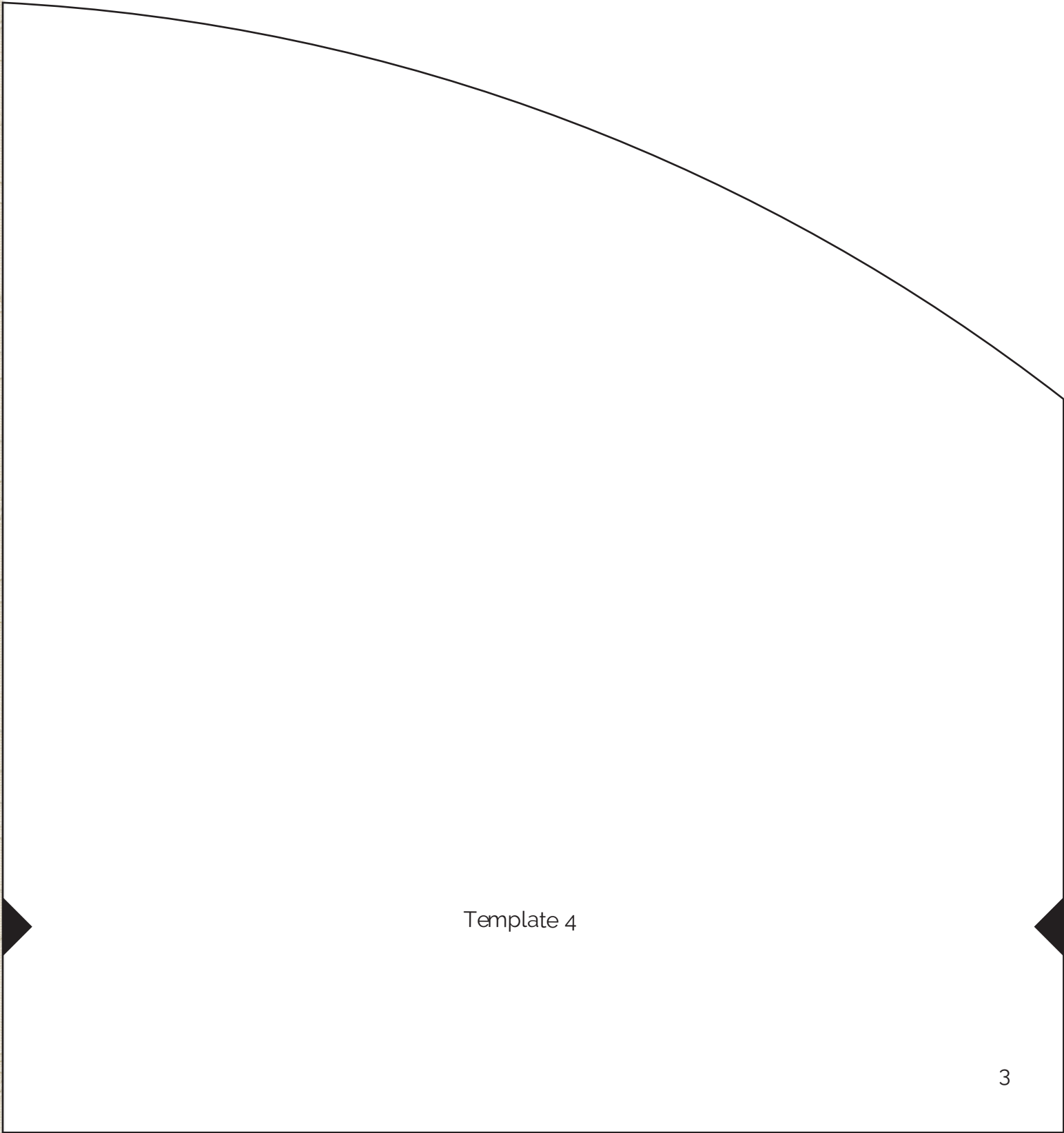


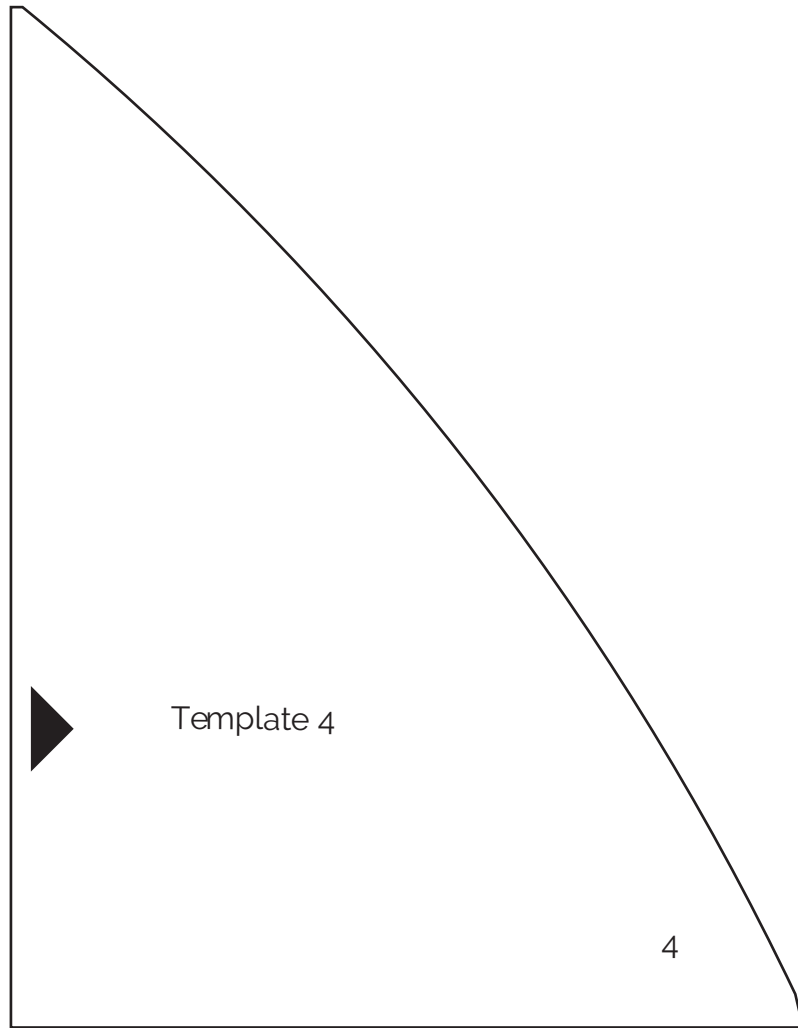


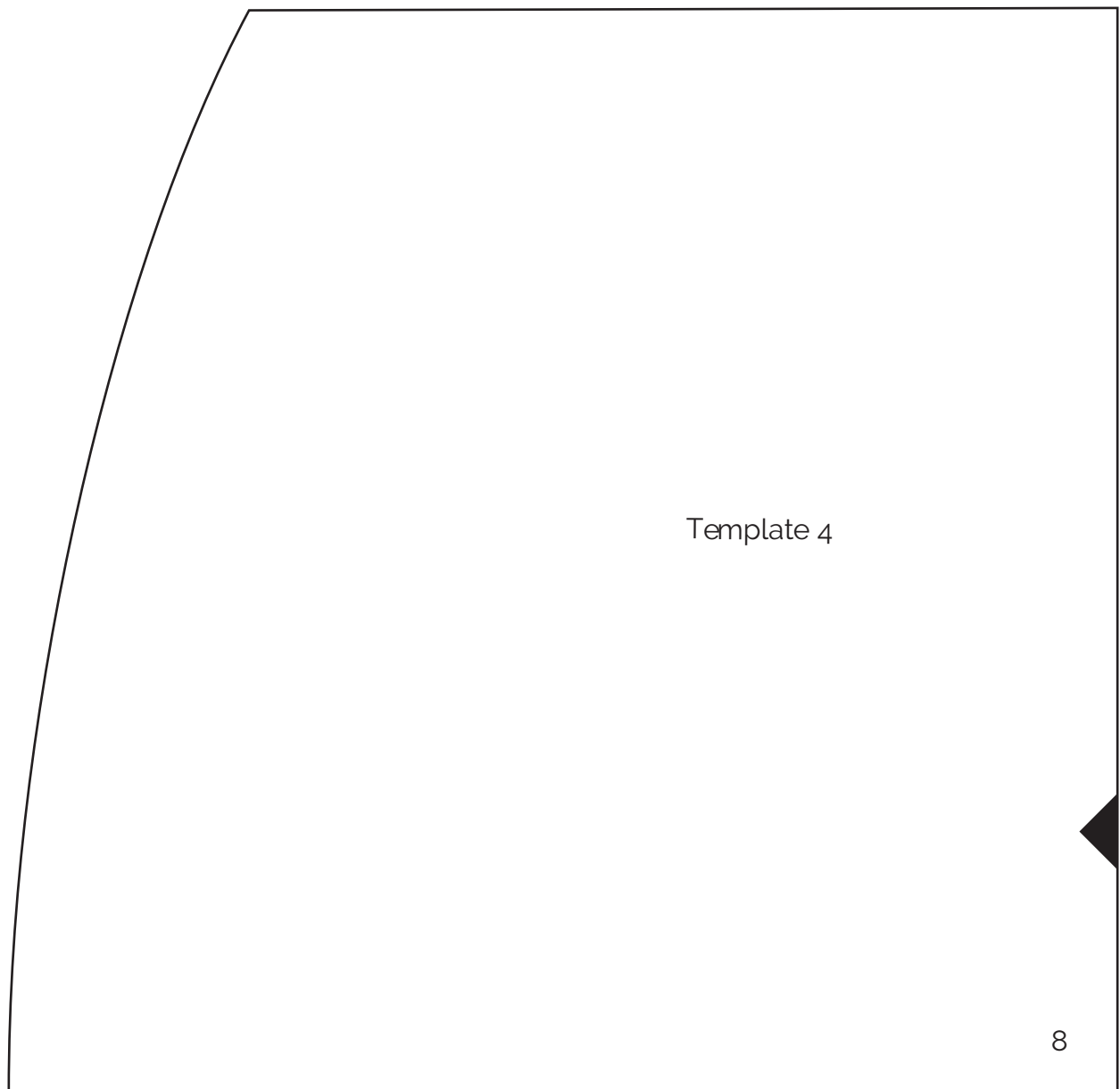




Template 4









Template 4

