

Happy Bloom



FREE PATTERN



Happy Bloom



WILD bloom

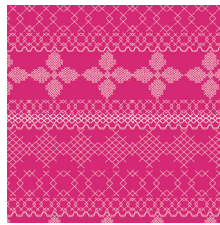
FABRICS DESIGNED BY BARI J.

COLOR OPTION

COME SHINE



WBL-12030
FLOWER SHOWER INTENSE



WBL-12031
CROSS & STITCH RASPBERRY



WBL-12032
SUMMER BOUQUET CLEAR



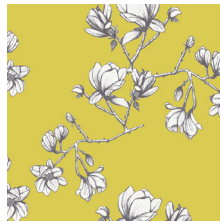
WBL-12033
LIVELY ROSEBUDS BURST



WBL-12034
CORSAGE CHARM PINK



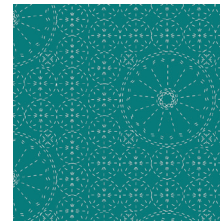
WBL-12035
LOWERFIELD SUNRISE



WBL-12036
MAGNOLIA STUDY ZEST



SGE-14457
EVERLASTING BLOOMS
CITRUS



SGE-14458
SASHIKO FLORETTE TEA

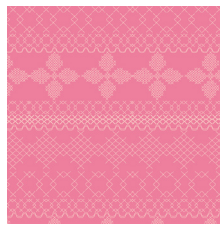


SGE-14459
STILL LIFE CRISP

COME RAIN



WBL-22030
FLOWER SHOWER SUBTLE



WBL-22031
CROSS & STITCH CANDY



WBL-22032
SUMMER BOUQUET POND



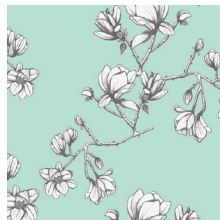
WBL-22033
LIVELY ROSEBUDS
CRYSTAL



WBL-22034
CORSAGE CHARM AQUA



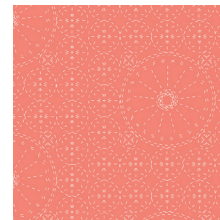
WBL-22035
FLOWERFIELD SUNSET



WBL-22036
MAGNOLIA STUDY FRESH



WBL-22037
EVERLASTING BLOOMS
BERRY



WBL-22038
SASHIKO FLORETTE CORAL



WBL-22039
STILL LIFE SWEET



Happy Bloom

FINISHED SIZE | 8' x 10'

FABRIC REQUIREMENTS

Fabric A	WBL-12039	¼ yd.
Fabric B	WBL-22038	⅓ yd.
Fabric C	DEN-S-2001	⅛ yd.

LINING FABRIC

WBL-22038 ⅓ yds. (Suggested)

Additional Material:

- Zipper

CUTTING DIRECTIONS

¼" seam allowances are included.
WOF means width of fabric.

- Two (2) rectangles of 8 ½" x 3" from fabric A.
- One (1) rectangle of 8 ½" x 4 ½" from fabric A.
- One (1) square of 8 ½" x 10 ½" from fabrics A.
- One (1) rectangle of 10 ½" x 5 ½" from fabric B.
- One (1) Flower Pattern 2 from fabric B.
- Two (2) strips of 8 ½" x 1" from fabric C.
- One (1) strip Flower Pattern 1 from fabric Kraftex.
- One (1) strip Flower Pattern 3 from fabric Kraftex.

CONSTRUCTION

Sew all rights sides together with ¼" seam allowance.

Front

- Start by pairing an 8 ½" x 3" rectangle from Fabric A with an 8 ½" x 1" strip from Fabric C.
- Pair an 8 ½" x 4 ½" rectangle from Fabric A with previous piece.
- Now, pair another 8 ½" x 1" strip from Fabric C
- Finish by pairing another 8 ½" x 3" rectangle from Fabric A



DIAGRAM 1

- Quilt as desired

Back

- Before you sew the Fabric B pocket with the Fabric A, quilt as desired.
- Once you have quilted your pocket piece, pair the 8 ½" x 10 ½" rectangle from Fabric A and the 10 ½" x 5 ½" rectangle pocket, facing wrong side with the right side of Fabric A piece.
- Folding the top of the rectangle inside a quarter seam of the pocket fabric, stitch all around.

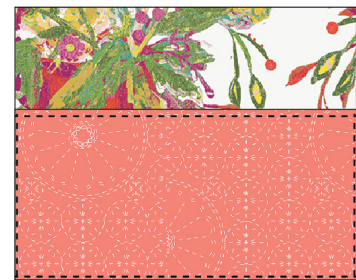


DIAGRAM 2

- Now, stitch on the middle in order to create your pocket. In this case, we created the pockets having one bigger than the other one.

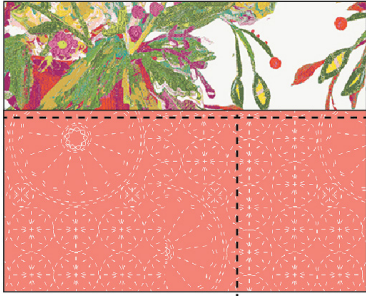


DIAGRAM 3

Zipper Construction

Insert your zipper foot-

- Take lining and front clutch and sandwich them inbetween your 10" zipper.
- Using a zipper foot sew as close to the zipper teeth as possible.
- Sew the two pieces of fabric with right sides together with the zipper sandwiched inbetween the two pieces of fabric (Diagram 4.1 and 4.2)
- Press fabric away from zipper and edge stitch the seam allowance to the lining sewing as close the edge as possible..
- Repeat process for the other side of the zipper using your other lining piece and back clutch.

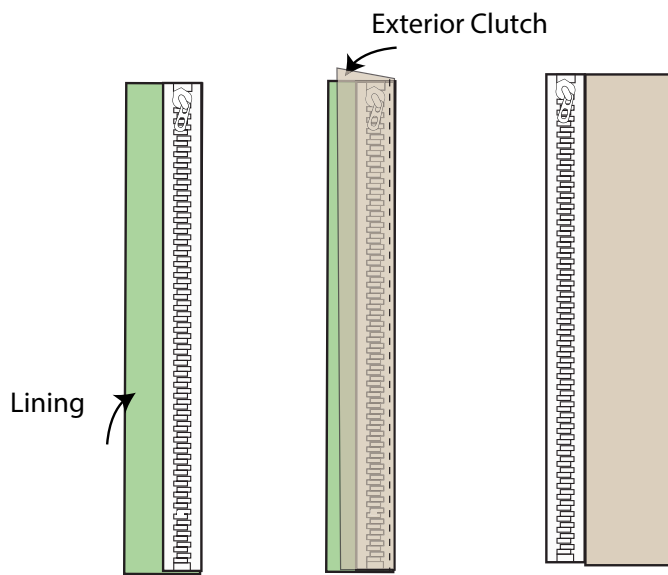


DIAGRAM 4.1

DIAGRAM 4.2

DIAGRAM 4.3



- Unzip zipper. Take the two fronts of the clutch and pin right sides together.
- Take the lining pieces and pin right sides together.
- Before you sew all the way around, make sure you pin the straps (already sewn) on each end of the zipper. Leave a unsewn portion in the bottom of the lining of the clutch.
- Pull right side of the fabric through the unsewn portion. Hand stitch or machine stitch unsewn portion closed.
- Enjoy your clutch!!

x x

x x

*Congratulations
& enjoy*

x x



artgalleryfabrics.com

NOTE: While all possible care has been taken to ensure the accuracy of this pattern, We are not responsible for printing errors or the way in which individual work varies. Please read instructions carefully before starting the construction of this quilt. If desired, wash and iron your fabrics before starting to cut.

© 2017 Courtesy of Art Gallery Quilts LLC. All Rights Reserved.