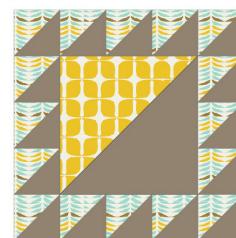
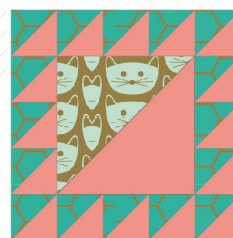


lost ships



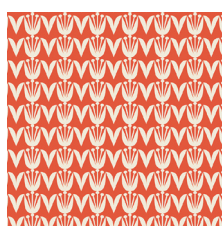
FABRICS DESIGNED BY DANA WILLARD



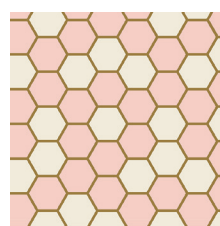
SUMMER



BSH-78400
DUTCH BLOOM SUMMER



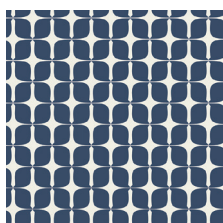
BSH-78401
TULIPS COPPER



BSH-78402
HEX ROSE



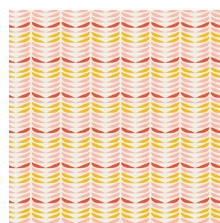
BSH-78403
FLORET BRIGHT



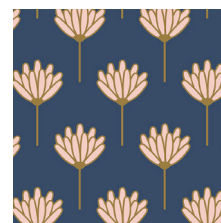
BSH-78405
MOD PAPER INDIGO



BSH-78406
CAT NAP PINK



BSH-78407
RETRO PETALS POWDER

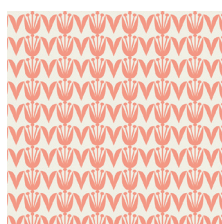


BSH-78408
FLORET SUNKISSED

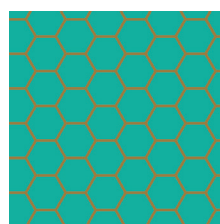
SPRING



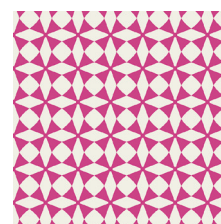
BSH-88400
DUTCH BLOOM SPRING



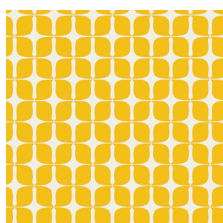
BSH-88401
TULIPS PEACH



BSH-88402
HEX TEAL



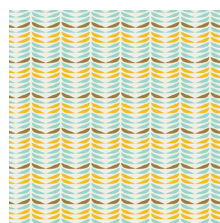
BSH-88404
WINDMILL MAGENTA



BSH-88405
MOD PAPER CITRUS



BSH-88406
CAT NAP MINT



BSH-88408
RETRO PETAL MIST



BSH-88409
FLORET HONEYDEW



FEEL THE DIFFERENCE © 2017 Courtesy of Art Gallery Quilts LLC. All Rights Reserved.



FINISHED SIZE | 10" x 10"

FABRIC REQUIREMENTS

Block 1

Fabric **A** BSH-88400 F8

Fabric **B** BSH-88404 F8

Fabric **C** PE-402 FQ

Block 2

Fabric **A** BSH-78408 F8

Fabric **B** BSH-78405 F8

Fabric **C** PE-420 FQ

Block 3

Fabric **A** BSH-88406 F8

Fabric **B** BSH-88402 F8

Fabric **C** PE-450 FQ

Block 4

Fabric **A** BSH-88405 F8

Fabric **B** BSH-88408 F8

Fabric **C** PE-469 FQ

CUTTING DIRECTIONS

*1/4" seam allowances are included.
WOF means width of fabric.*

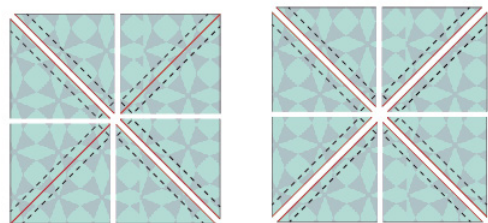
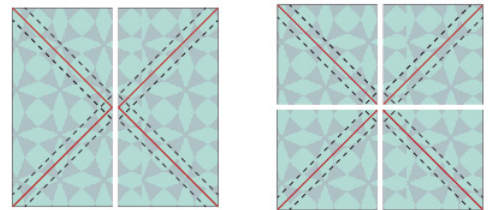
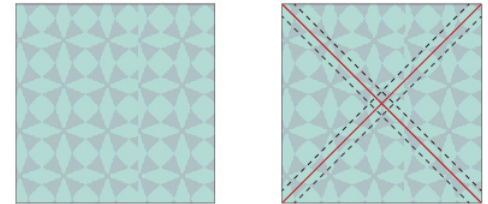
- One (1) 6⁷/₈" x 6⁷/₈" square from fabric **A** and **C**.
- Two (2) 5 3/4" x 5 3/4" squares from fabric **B** and **C**.

CONSTRUCTION

Sew all rights sides together with 1/4" seam allowance.

- Take one (1) 5 3/4" x 5 3/4" square from fabric **B** and **C**.
- Place them face to face.
- Draw diagonal lines on from corner to corner.

- Stitch at 1/4" from each side of the drawn lines.
- Cut vertically along the center.
- Cut horizontally along the center.
- Cut along the drawn lines.
- Open and press.
- You have eight (8) perfect half square triangles.
- Repeat the process to have a total of sixteen (16) half square triangles.



x 2 = 16

DIAGRAM 1

- Take one (1) 6⁷/₈" x 6⁷/₈" square from fabric **A** and **C**.
- Cut them diagonally and join one triangle of each to create a half square triangle.

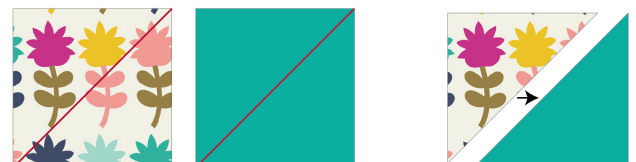


DIAGRAM 2

- Make two (2) rows of five (5) half square triangles
- Make two (2) columns of three (3) half square triangles.
- Join the pieces to the big half square triangle as shown on Diagram 3.

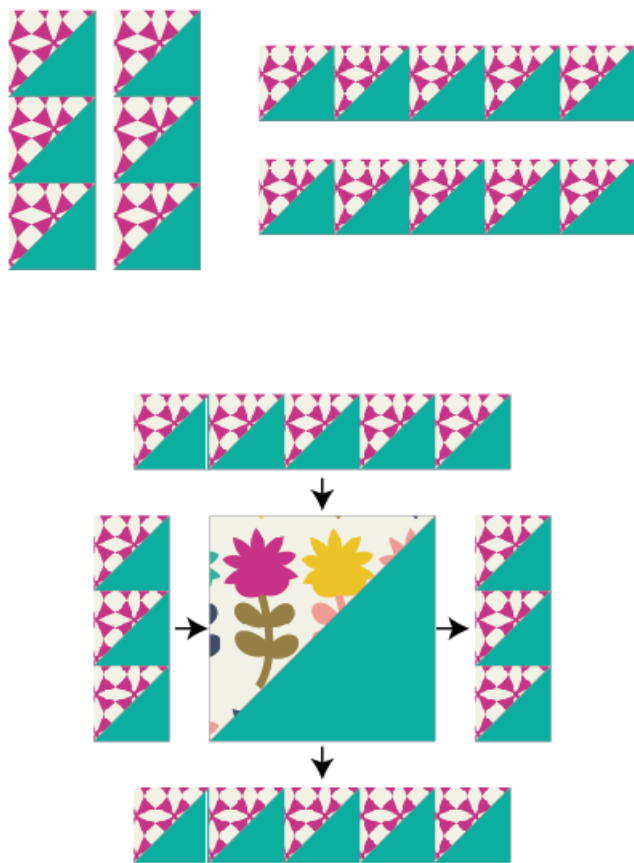


DIAGRAM 3



artgalleryfabrics.com

NOTE: While all possible care has been taken to ensure the accuracy of this pattern, We are not responsible for printing errors or the way in which individual work varies. Please read instructions carefully before starting the construction of this quilt. If desired, wash and iron your fabrics before starting to cut.