



AGFstudio



Woodlands FUSION

FABRICS DESIGNED BY AGF STUDIO



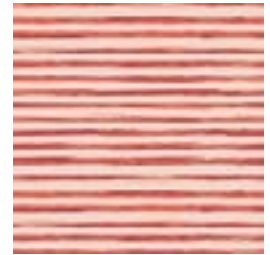
FUS-W-600
PARADIS WOODLANDS



FUS-W-601
WREATHED WOODLANDS



FUS-W-602
BUCK FOREST WOODLANDS



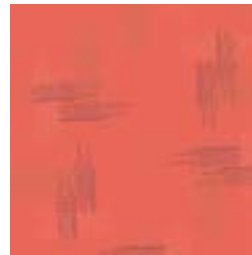
FUS-W-603
ROW BY ROW WOODLANDS



FUS-W-604
KLADI UNDER WOODLANDS



FUS-W-605
PRUNING ROSES WOODLANDS



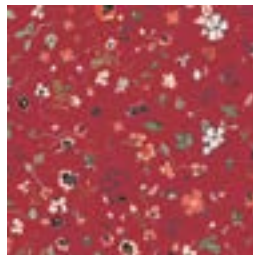
FUS-W-606
MISS THREAD WOODLANDS



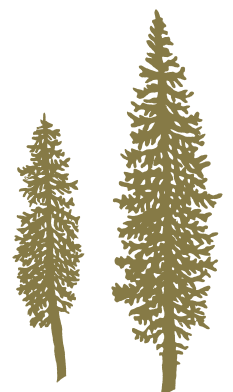
FUS-W-607
INK OUTBURST WOODLANDS



FUS-W-608
TIMBERLAND WOODLANDS



FUS-W-609
JOIE DE CLAIR WOODLANDS





FINISHED SIZE | 16' x 18½'

FABRIC REQUIREMENTS

Fabric A	FUS-W-609	¼ yd.
Fabric B	FUS-W-608	½ yd.
Fabric C	DEN-S-2008	¼ yd.
Fabric D	DEN-L-4000	½ yd.
Fabric E	PE-432	½ yd.

LINING FABRIC
PE-432 (included)

CUTTING DIRECTIONS

¼" seam allowances are included.
WOF means width of fabric.

- Six (6) of Leaf 1 Template from Fabric **A**
- Six (6) of Leaf 2 Template from Fabric **A**
- Thirty (30) of Leaf 2 Template from Fabric **B**
- Four (4) of Handle Template from Fabric **B**
- Eight (8) of Circle Template from Fabric **C**
- Two (2) of Bag Template from Fabric **D**
- Two (2) of Bag Template from Fabric **E (lining)**

CONSTRUCTION

Sew all rights sides together with ¼" seam allowance.

- Start by cutting all Leaf Templates 1 & 2 for Fabrics **A, B**
- Cut all Fabric **C** Circle Templates
- Cut Bag Template from Fabric **D**



- Once you have the Bag Template cut out, you may quilt as desired before you place the Leaf and Circle Templates .
- For the Leaf and Circle Templates you can do a small zig zag stitch on the edges so they wont fray.
- You can use any desired color thread to creat the contrast effect from the Bag Pattern piece.
- Now, take the first Bag Pattern Piece and start marking where your flowers will be placed. See Diagram below as guidance.
- Sew with zig zag stitch.

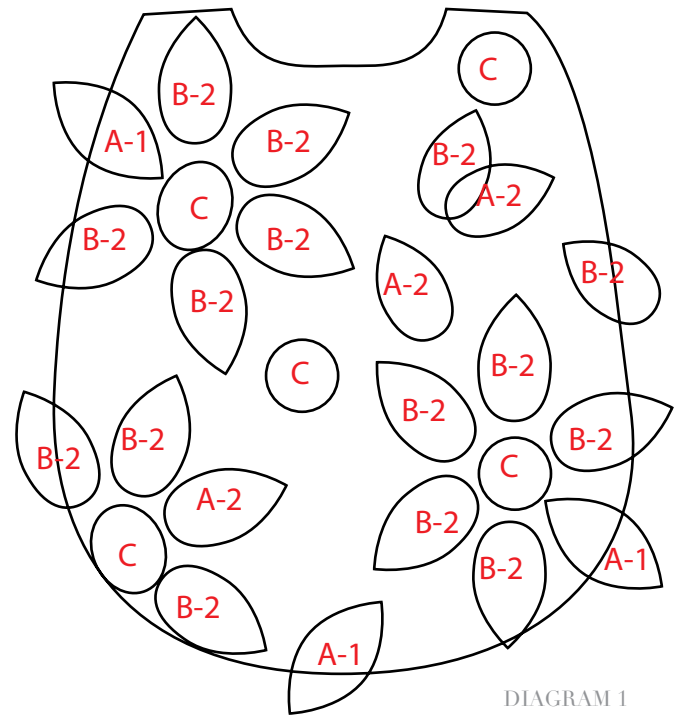


DIAGRAM 1

- Repeat same process for the back side of the bag

- To create the handles, trace and cut the four (4) Handle Pattern pieces from Fabric B
- Add fusible on one side of one piece.
- Place the two handle pieces right sides together and sew at 1/4" seam allowance.
- Repeat the same process for the other handle pieces.
- Pull right sides of the handles through a safety pin
- Top stitch on each side of starp as close to the edge side seam as you can.
- Set aside

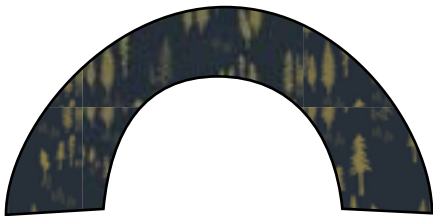
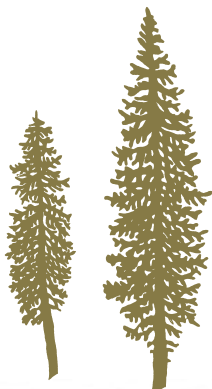


DIAGRAM 2

- Place the end of handles of your front and back of the bag and stitich into place at 1/4"



DIAGRAM 3



- Sew front and back of bag with right sides together at 1/4" seam allowance. Also sew the two lining pieces together but leave a small unsewn portion at the bottom in order to pull right side of the bag through.
- Take the lining pieces and pin right sides together. with the Bag Pattern pieces.
- Now you can sew all the way around leaving a unsewn portion in the bottom of the lining of the bag.
- Pull right side of the fabric throught the unsewn portion. Hand stitch or machine stitch unsewn portion closed.
- Press and enjoy!!!

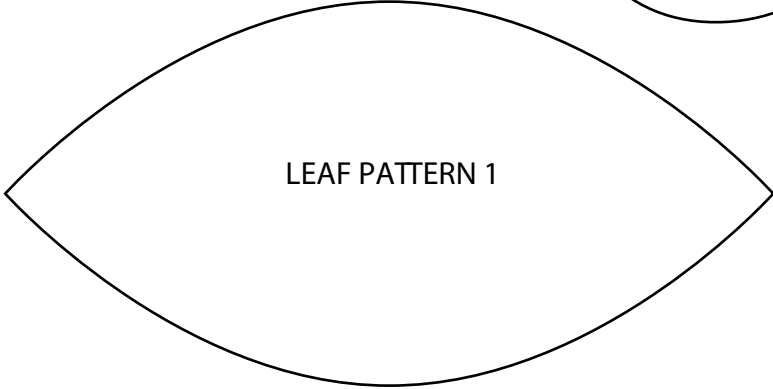
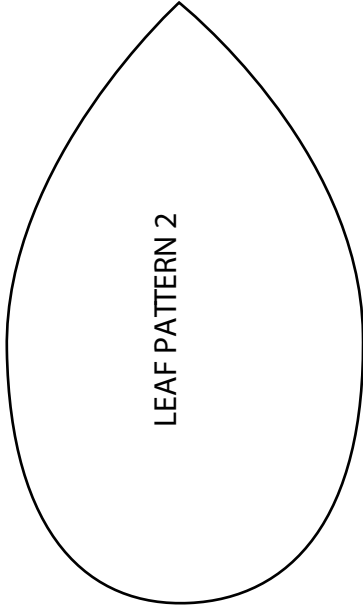
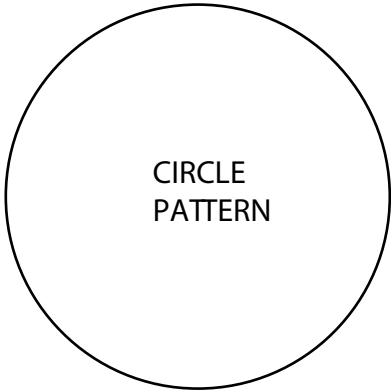
Congratulations
& enjoy



artgalleryfabrics.com

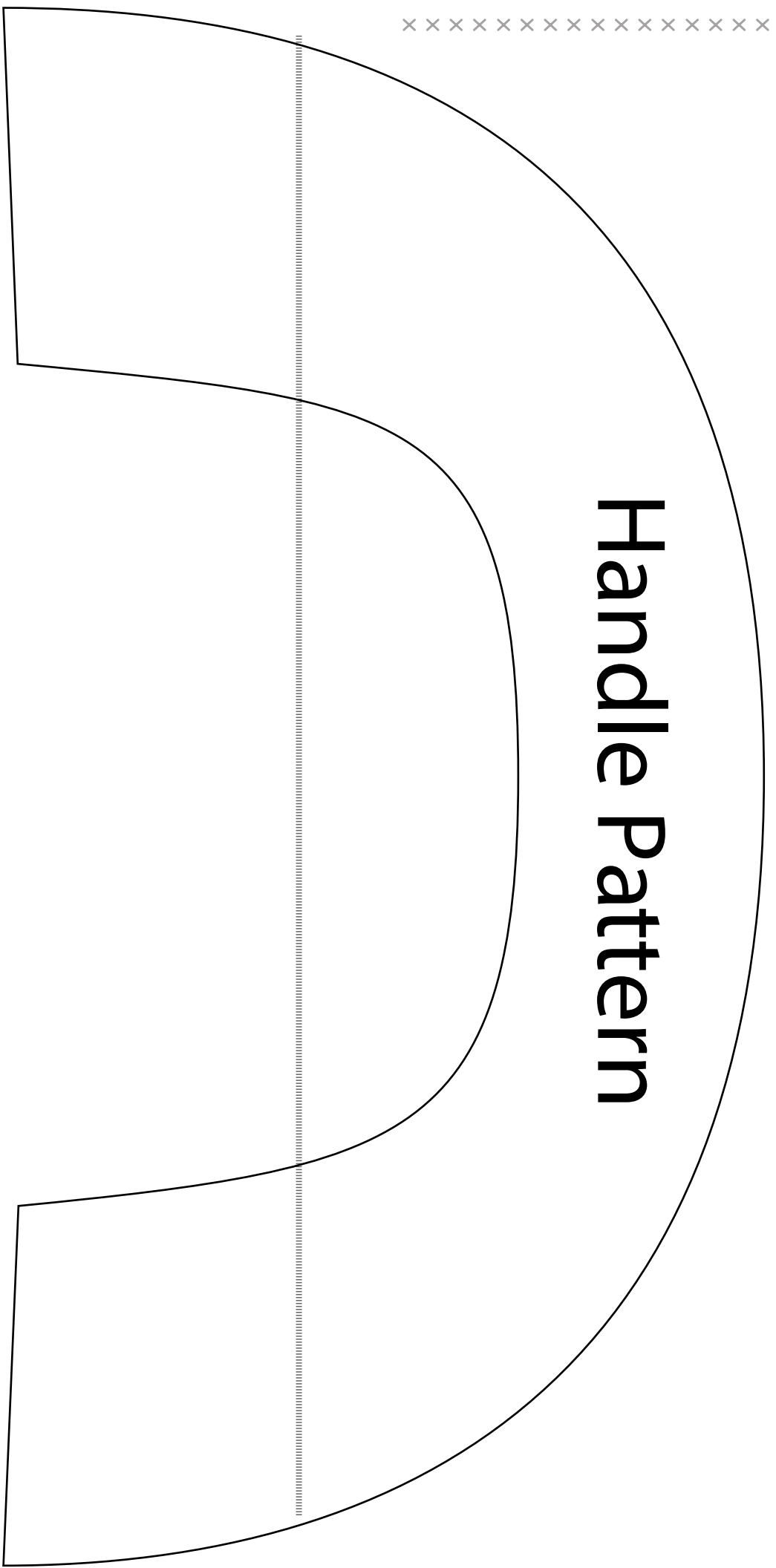
NOTE: While all possible care has been taken to ensure the accuracy of this pattern, We are not responsible for printing errors or the way in which individual work varies. Please read instructions carefully before starting the construction of this quilt. If desired, wash and iron your fabrics before starting to cut.

© 2017 Courtesy of Art Gallery Quilts LLC. All Rights Reserved.





Handle Pattern



xx



Attach straps




Bag Pattern





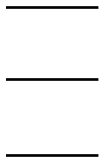
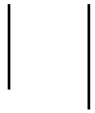
XX



Attach straps

Bag Pattern

Bag Pattern





Bag Pattern

