

Dripping Paint



FUSIONS
 by AGF

FREE PATTERN

XXXXXXXXXXXXXXXXXXXXXXXXXXXX

Dripping Paint

AGFstudio

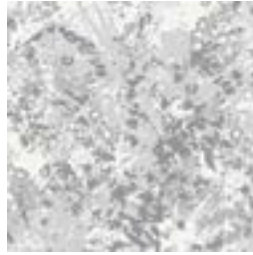


Bachelorette FUSION

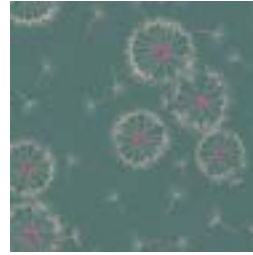
FABRICS DESIGNED BY AGF STUDIO



FUS-BC-500 GARDEN ROCKET BACHELORETTE



FUS-BC-501 REBEL BRUSHSTROKES BACHELORETTE



FUS-BC-502 TINY DANCER BACHELORETTE



FUS-W-603 ALL PATHS BACHELORETTE



FUS-BC-504 FIREFLY BACHELORETTE



FUS-BC-505 TREKANT ROWS BACHELORETTE



FUS-BC-506 PANACHE BACHELORETTE



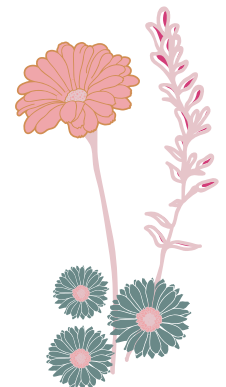
FUS-BC-507 FLOWER FIELD BACHELORETTE



FUS-BC-508 MUDCLOTH BACHELORETTE



FUS-BC-509 DRIPPING PAINT BACHELORETTE



Dripping Paint

FINISHED SIZE | 10" x 10"

FABRIC REQUIREMENTS

Fabric A	FUS-BC- 508	F8
Fabric B	PE-408	F8.
Fabric C	DEN-L-4000	F8.
Fabric D	FUS-BC- 509	F8.

CUTTING DIRECTIONS

*¼" seam allowances are included.
WOF means width of fabric.*

- Two (2) 4" perfect squares from Fabric A
- Two (2) 4" perfect squares from Fabric B
- Two (2) 4 ⅜" perfect square from Fabric C
- One (1) 5 ½" perfect squares from Fabric D

CONSTRUCTION

Sew all rights sides together with ¼" seam allowance.

- Start by taking Fabric A 4" perfect squares and cut your piece in half on the diagonal line to create your triangle.
- Repeat the same process for the other Fabric A, B perfect square
- You will have a total of 4 triangles from Fabric A and B

- XXXXXXXXXXXXXXXXXXXXXXXXXXXX
- Now, take one triangle piece from Fabric A and pair it with one triangle from Fabric B
 - Position them having the point facing down as diagram below.
 - Repeat same process for the other fabric A and B (Diagram below)

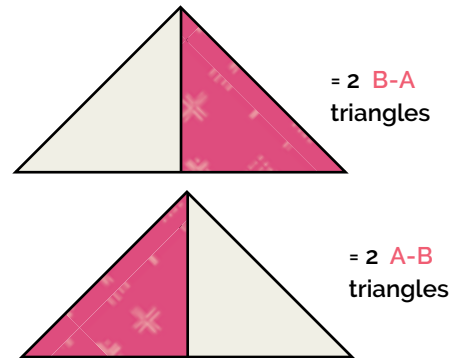


DIAGRAM 1

- Now, take Fabric C perfect square and cut your piece in half on the diagonal line to create your triangle.
- Repeat the same process for the other Fabric C perfect square.
- Now take your Fabric D perfect square and your Fabric C triangles and start pairing them on each side of your square. (Diagram below)

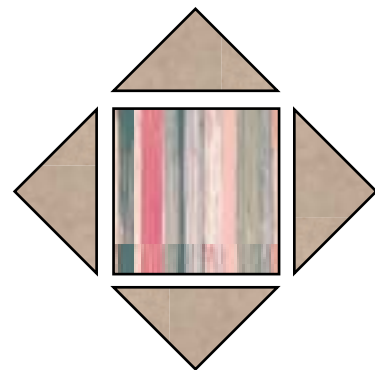


DIAGRAM 2

- Now, take your B-A triangle and pair it on the corner left side .
- Then take your B-A triangle and pair it on the corner right side.
- Take your A-B triangle and pair it on the bottom right side
- And last, pair your A-B triangle and pair on the bottom left side.

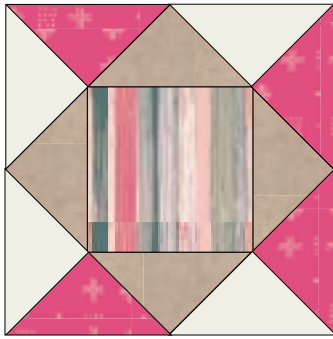
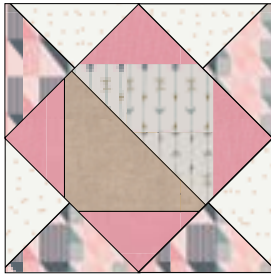


DIAGRAM 3

- Once you have your pretty block assembled, quilt as desired.
- As a second option for your blocks, if you want to create the following block from below diagram, the only difference would be is the center square.
- Choose any 5th fabric of your choice and modify the sizing so you can create an Half Square Triangle.
- Enjoy!!

Second option for your Block



artgalleryfabrics.com

NOTE: While all possible care has been taken to ensure the accuracy of this pattern, We are not responsible for printing errors or the way in which individual work varies. Please read instructions carefully before starting the construction of this quilt. If desired, wash and iron your fabrics before starting to cut.

© 2017 Courtesy of Art Gallery Quilts LLC. All Rights Reserved.