



AGFstudio



Woodlands FUSION

FABRICS DESIGNED BY AGF STUDIO



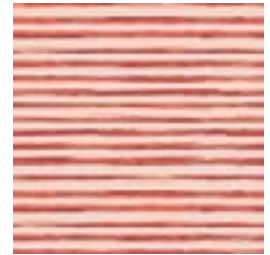
FUS-W-600
PARADIS WOODLANDS



FUS-W-601
WREATHED WOODLANDS



FUS-W-602
BUCK FOREST WOODLANDS



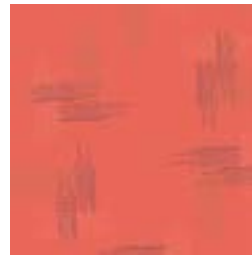
FUS-W-603
ROW BY ROW WOODLANDS



FUS-W-604
KLADI UNDER WOODLANDS



FUS-W-605
PRUNING ROSES WOODLANDS



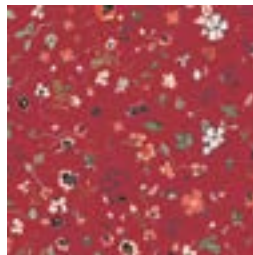
FUS-W-606
MISS THREAD WOODLANDS



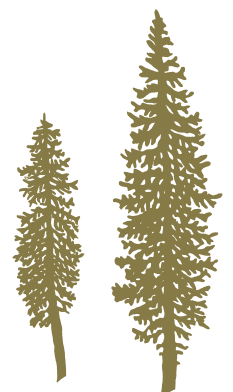
FUS-W-607
INK OUTBURST WOODLANDS



FUS-W-608
TIMBERLAND WOODLANDS



FUS-W-609
JOIE DE CLAIR WOODLANDS





FINISHED SIZE | 22' x 15'

FABRIC REQUIREMENTS

Fabric A	FUS-W-602	⅔ yd.
Fabric B	PE-450	¼ yd.
Fabric C	DEN-L-4000	⅛ yd.

BACKING FABRIC
FUS-W-602 (included)

CUTTING DIRECTIONS

*¼" seam allowances are included.
WOF means width of fabric.*

- Five (5) of Template 1, left to right up, from Fabric **A**
- Six (6) of Template 1, right to left down, from Fabric **A**
- Six (6) of Template 1, right to left up, from Fabric **A**
- Five (5) of Template 1, left to right down, from Fabric **A**
- Twenty two (22) of Template 1 from Fabric **B**
- Six (6) of Template 1, left to right up, from Fabric **B**
- Five (5) of Template 1, right to left down, from Fabric **B**
- Five (5) of Template 1, right to left up, from Fabric **B**
- Six (6) of Template 1, left to right down, from Fabric **B**
- One (1) 22 ½" x 3 ½" strip from Fabric **C**

CONSTRUCTION

Sew all rights sides together with ¼" seam allowance.

- Start by pairing Fabric **A** template piece with the diagonal direction from right to left down, with a Fabric **B** template piece with the diagonal in opposite direction (left to right up)
- Repeat the same process by pairing a Fabric **B** template piece, right to left down, with Fabric **A** template piece, left to right up.
- Repeat same process by pairing according to diagram below

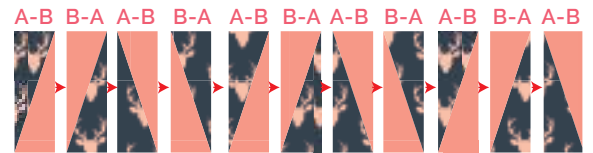


DIAGRAM 1

- And for the bottom part of the pillow, which is in mirrored effect, you will need to pair the pieces in the following order as diagram below:



DIAGRAM 2

- Now, take the 22 ½" x 3 ½" strip from Fabric **C** and pair it with the top and bottom pieces.

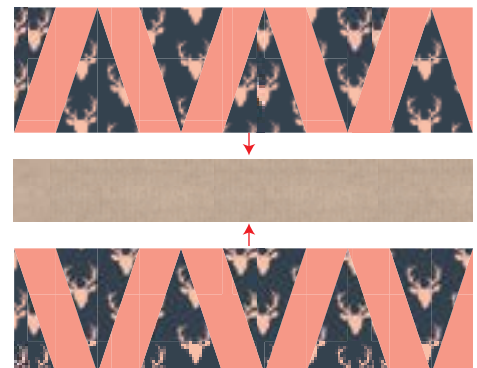
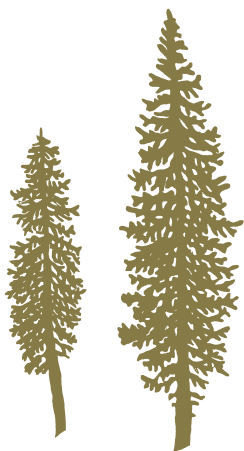


DIAGRAM 3

CREATING THE BACK PILLOW

*Sew all rights sides together with ¼" seam allowance.
Press open.*

- To make a envelope back for your pillow take both 17' x 16' rectangles and fold one 16' side on each rectangle in 1/2' and press and then fold another 1/2' and press.
- Top stitch as close to the edge as possible.
- Place rectangles right side together on top of each other to the front of your pillow and stitch all the way around your pillow at ¼' seam allowance.
- Clip corners at seam allowance and flip piece to the right side of the fabric.
- Fill pillow with a 22' x 15' pillow form and enjoy!



XX

*Congratulations
& enjoy*

XX



artgalleryfabrics.com

NOTE: While all possible care has been taken to ensure the accuracy of this pattern, We are not responsible for printing errors or the way in which individual work varies. Please read instructions carefully before starting the construction of this quilt. If desired, wash and iron your fabrics before starting to cut.

