

featuring *INDIE BOHEME*



PIECING *Serenity*



INDIE *Bohème*

FABRICS DESIGNED BY PAT BRAVO



COLOR OPTION

ROMANTIC BOUDOIR



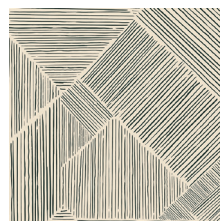
IBH-64200
GITAN PARADIS PEARL



IBH-64201
BRIEF MEMENTOS PINK



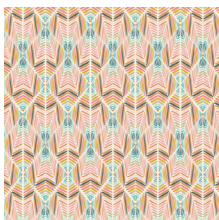
IBH-64202
BOHO QUEST NIGHT



IBH-64203
TROUVAILLE ROUTES SAND



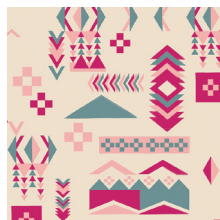
IBH-64204
VIE DE BOHÈME SUNRISE



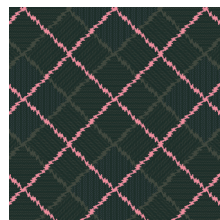
IBH-64205
ETERNAL SERENITY ROSE



IBH-64206
BLOOMING SOUL LAUREL



IBH-64207
WOODBLOCK SPIRIT CRISP



IBH-64208
APATITE CRYSTAL

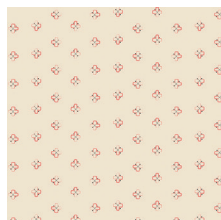


IBH-64209
BOHEMIAN PATCHWORK

ANTIQUÉ DRESSER



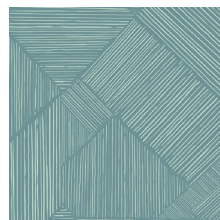
IBH-74200
BLOMMA GARDEN GOLDEN



IBH-74201
BRIEF MEMENTOS LINEN



IBH-74202
BOHO QUEST DAY



IBH-74203
TROUVAILLE ROUTES OCEAN



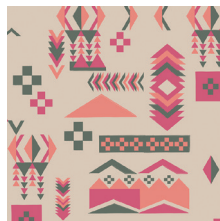
IBH-74204
VIE DE BOHÈME SUNSET



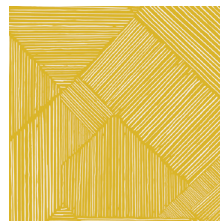
IBH-74205
ETERNAL SERENITY CORAL



IBH-74206
BLOOMING SOUL PLUM



IBH-74207
WOODBLOCK SPIRIT WARM



IBH-74210
TROUVAILLE ROUTES SUN



IBH-74211
FOLK PLEATS

FINISHED SIZE | 10' x 8'

FABRIC REQUIREMENTS

Fabric A	IBH-64209	F8
Fabric B	IBH-64206	F8
Fabric C	IBH-64208	F8
Fabric D	IBH-74205	F8
Fabric E	IBH-74211	F8
Fabric F	IBH-74204	F8
Fabric G	DEN-L-4000	F8

LINING FABRIC

Fabric **F** (*fabric included*)

Additional Materials

- 12' Zipper
- Fusible Fleece

CUTTING DIRECTIONS

*1/4" seam allowances are included.
WOF means width of fabric.*

- One (1) 2"x 8" strip from Fabric **A**.
- One (1) 5' x 6' block from Fabric **A**.
- One (1) 10½' x 8½' rectangle from Fabric **A**.
- One (1) 3' x 10' rectangle from Fabric **B**
- One (1) 5' perfect square from Fabric **C**.
- One (1) 3' perfect square Fabric **D**
- One (1) 6½' perfect square from Fabric **E**.
- Two (2) 10½' x 8½' rectangle from Fabric **F**. (*lining*)
- One (1) 2' x 10' strip from Fabric **G**.

CONSTRUCTION

Sew all rights sides together with 1/4" seam allowance.

- Place the one (1) 3' perfect square Fabric **D** over the number 1.. section of the template below.
- Next place the 2"x 8" strip from Fabric **A** face to face at an angle of Fabric **D**.
- Sew directly on the line of the paper.
- Fold, open, and press.

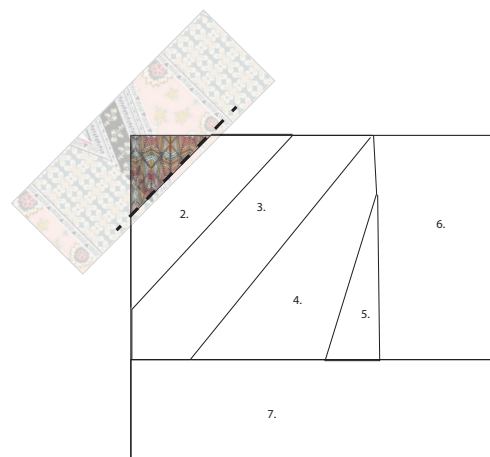


DIAGRAM 1

- Next take the 3' x 10' rectangle from Fabric **B** and place it face to face to previously sewn unit.
- Fold, open, and press.
- Section number 3 should now be covered.
- Take the 6½' perfect square from Fabric **E** and place it over the number 4 area.
- Choose to cut Fabric **E** square resembling the number 4 area or just place face to face with area number 3 Fabric
- Sew directly on line
- Fold, open, and press.

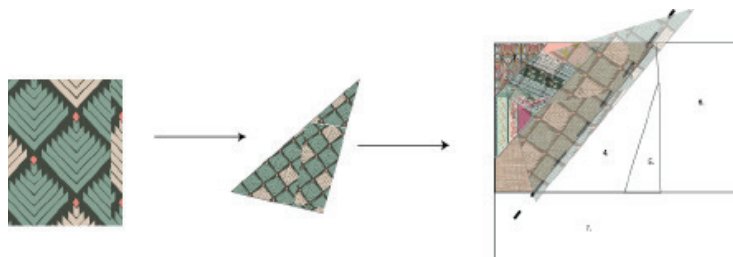


DIAGRAM 2

- Repeat the same method using the 5' perfect square from Fabric **C** to cover the number 5 area of template.
- Then following with the 5' x 6' block from Fabric **A** to cover the number 6 area of template.
- Use diagram as a reference.

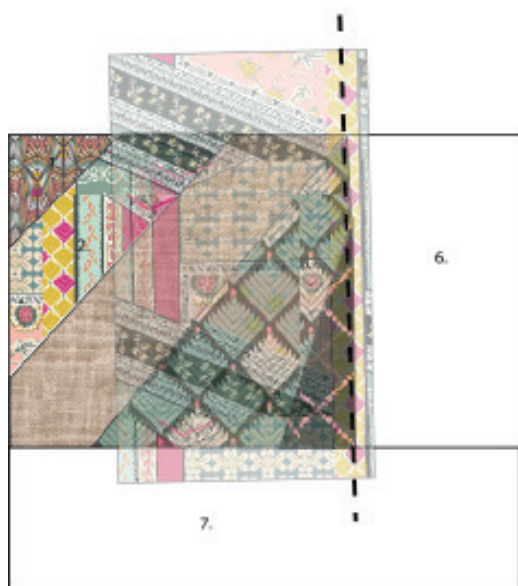


DIAGRAM 3

- Trim excess fabric

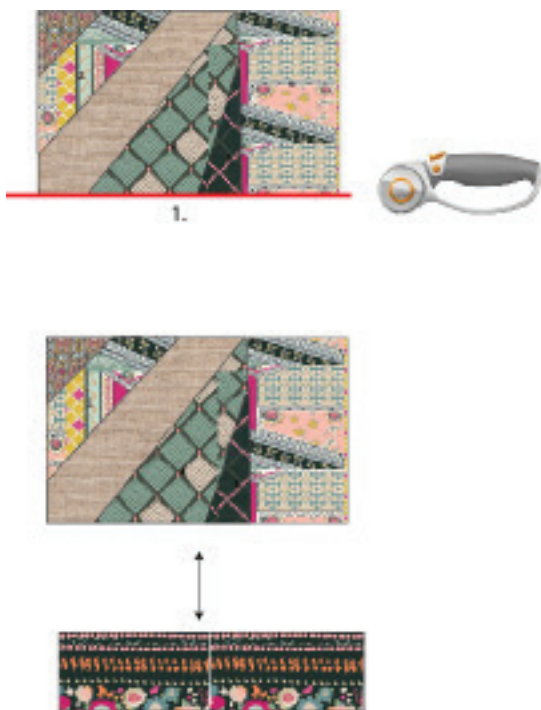


DIAGRAM 4

- Sew the 2' x 10' strip from Fabric **G** to the bottom, now the cover of your clutch should be completed.
- Sew the Fusible fleece on the back of the cover of the clutch and the back of the 10½' x 8½' rectangle from Fabric **A** at a ¼'.
- Then sandwich the 10½' x 8½' rectangle from Fabric **F**, the zipper, and the cover
- Sew.
- Repeat using the opposite side of the zipper.
- Final step, close zipper half way, place to cover and back face to face
- Place the lining's face to face
- Sew all around at a ¼. Be sure to leave an opening to flip the bag.
- Use diagram as a reference.

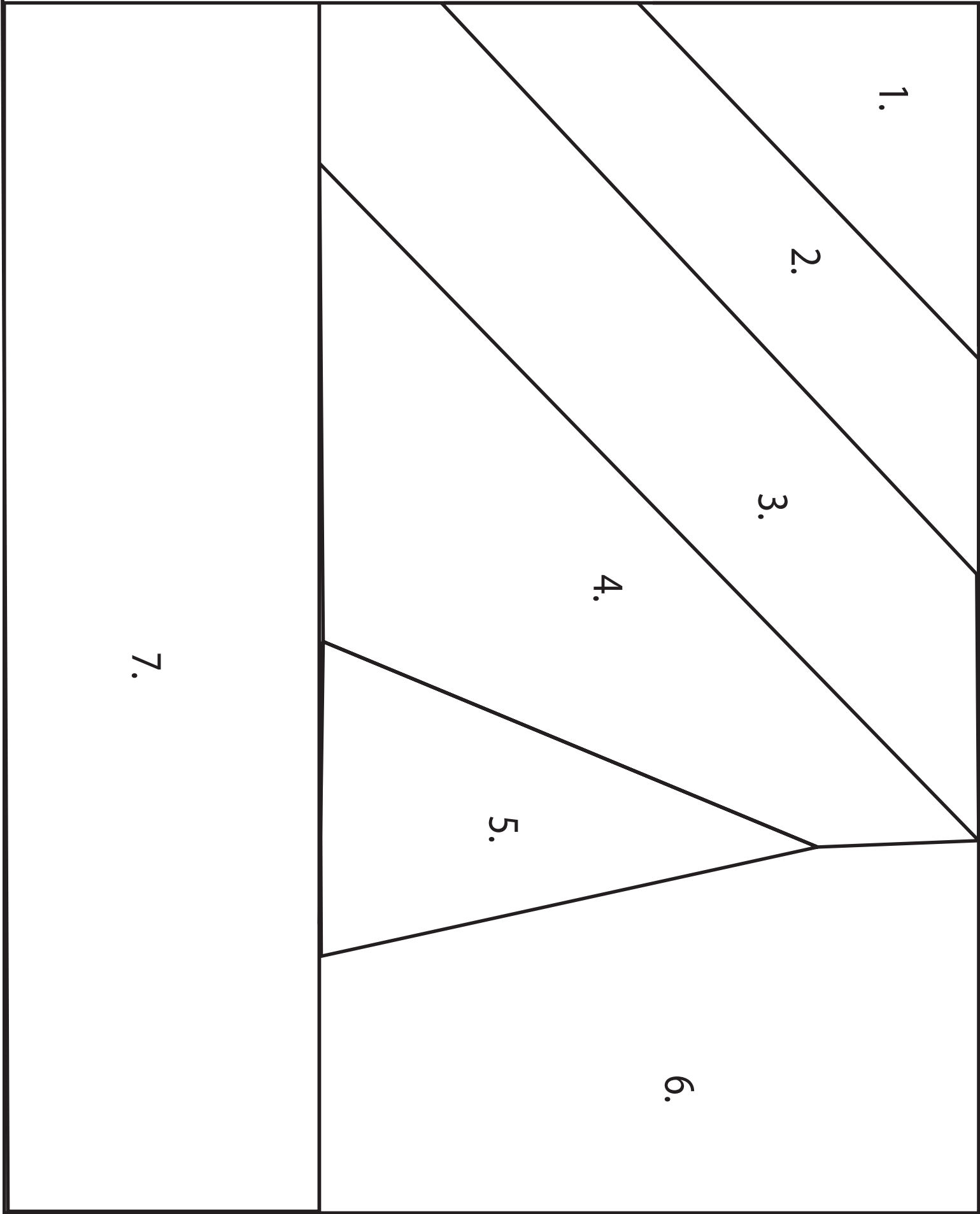


DIAGRAM 5



artgalleryfabrics.com

NOTE: While all possible care has been taken to ensure the accuracy of this pattern, We are not responsible for printing errors or the way in which individual work varies. Please read instructions carefully before starting the construction of this quilt. If desired, wash and iron your fabrics before starting to cut.



Happy Sewing

#PatBravoDesign



To see more patterns, fabrics
and lots of inspiration visit:

patbravo.com

NOTE: While all possible care has been taken to ensure the accuracy of this pattern, we are not responsible for printing errors or the way in which individual work varies. Please read instructions carefully before starting the construction of this quilt. If desired, wash and iron your fabrics before starting to cut.

© 2016 Courtesy of Pat Bravo All Rights Reserved.