

featuring *INDIE BOHEME*



MEDLEY Bag



MEDLEY Bag



Pat Bravo



COLOR OPTION

INDIE Bohème

FABRICS DESIGNED BY PAT BRAVO

ROMANTIC BOUDOIR



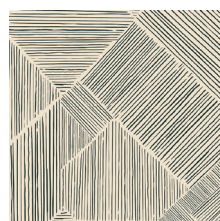
IBH-64200
GITAN PARADIS PEARL



IBH-64201
BRIEF MEMENTOS PINK



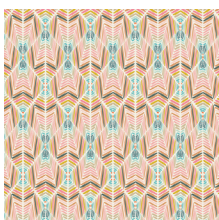
IBH-64202
BOHO QUEST NIGHT



IBH-64203
TROUVAILLE ROUTES SAND



IBH-64204
VIE DE BOHÈME SUNRISE



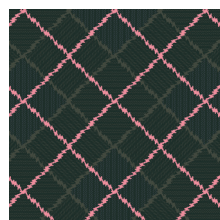
IBH-64205
ETERNAL SERENITY ROSE



IBH-64206
BLOOMING SOUL LAUREL



IBH-64207
WOODBLOCK SPIRIT CRISP



IBH-64208
APATITE CRYSTAL



IBH-64209
BOHEMIAN PATCHWORK

ANTIQUÉ DRESSER



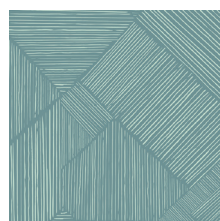
IBH-74200
BLOMMA GARDEN GOLDEN



IBH-74201
BRIEF MEMENTOS LINEN



IBH-74202
BOHO QUEST DAY



IBH-74203
TROUVAILLE ROUTES OCEAN



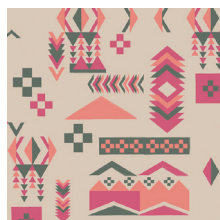
IBH-74204
VIE DE BOHÈME SUNSET



IBH-74205
ETERNAL SERENITY CORAL



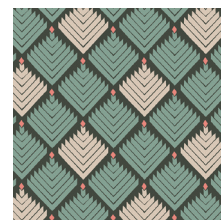
IBH-74206
BLOOMING SOUL PLUM



IBH-74207
WOODBLOCK SPIRIT WARM



IBH-74210
TROUVAILLE ROUTES SUN



IBH-74211
FOLK PLEATS



FEEL THE DIFFERENCE © 2017 Courtesy of Art Gallery Quilts LLC. All Rights Reserved.

FABRIC REQUIREMENTS

Fabric A	IBH-64200	FQ
Fabric B	IBH-64201	FQ
Fabric C	IBH-64202	FQ
Fabric D	IBH-64206	FQ
Fabric E	IBH-64209	FQ
Fabric F	IBH-74202	FQ
Fabric G	IBH-74204	F8
Fabric H	IBH-74205	FQ
Fabric I	IBH-74206	FQ
Fabric J	IBH-74210	FQ
Fabric K	DEN-L-4000	F8
Fabric L	IBH-74201	¾yd

LINING FABRIC

Fabric **L** (fabric included)

CUTTING DIRECTIONS

¼" seam allowances are included.
WOF means width of fabric.

One (1) 1" x 20" strip from Fabric **A, C, E, I**.

Two (2) 2' x 20' strips from Fabric **A, B**.

One (1) 3' perfect square from Fabric **A**.

One (1) 3' x 6' strip from Fabric **A, G, J, K**.

One (1) 3' x 20' strip from Fabric **D**.

One (1) 4' x 20' strip Fabric **E**.

One (1) 2' x 10' strip from Fabric **E, H**.

One (1) 2' x 20' strip from Fabric **F, H, J**.

One (1) 3' x 8' strip from Fabric **G, I**.

Two (2) 3' x 6' strips from Fabric **H**.

Two (2) 3' x 8' strips from Fabric **K**.

One (1) 3' x 9' strip from Fabric **K**.

Two (2) 20' x 16" rectangles from Fabric **L**.

One (1) 40½' x 5½' strip from Fabric **L**.

(hold on to all scraps!!!)

CONSTRUCTION

Sew all rights sides together with ¼" seam allowance.

- To begin start by piecing the strips pieces together.
- Take the 3' x 8' strip from Fabric **K**, the 3' x 6' strip from Fabric **A**, and **J**.
- Sew the pieces vertically in the order mentioned.



DIAGRAM 1

- Continue with same instructions with same size fabrics for the following:



DIAGRAM 2

- Then take the 3' x 8' strip from Fabric **I**, the 3' perfect square from Fabric **A**, and the 3' x 9' strip from Fabric **K**
- Sew the pieces vertically.

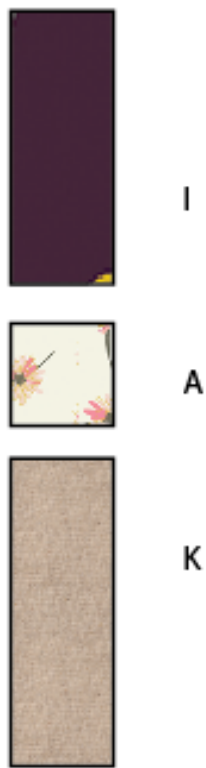


DIAGRAM 3

- Next sew the 2' x 10' strips from Fabric **E**, **H** together.



DIAGRAM 4

- Next sew the 3' x 6' strip from Fabric **G**, the 3' x 8' strips from Fabric **K**, and the 3' x 6' strip from Fabric **H**



DIAGRAM 5

- Each strip should now measure 20' long in height.
- Begin sewing all strip pieces together side by side.
- Use diagram below in referencing the order of strips.

Front



DIAGRAM 6

Back



DIAGRAM 7

- All strips should now be sewn and pieced together.
- Next take the Medley bag template below and place over the sewn strips.
- Cut out tracing the template all around for both the front, back, and also the two (2) 20" x 16" rectangles from Fabric L *(which will be used for lining)*
- Following make a 40½" x 5½" strip long using the left over scraps. As this will be used for the side of the bag.



- Now take the front cover of your bag and pin the side piece of the 40½" x 5½" strip on the sides and bottom.



DIAGRAM 8

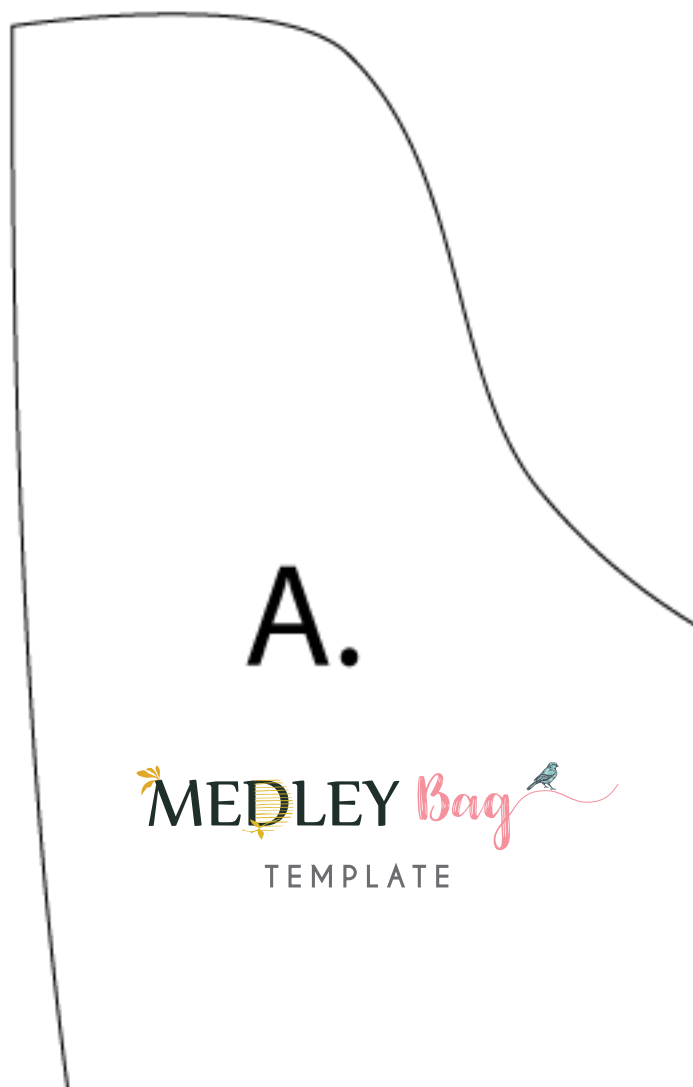
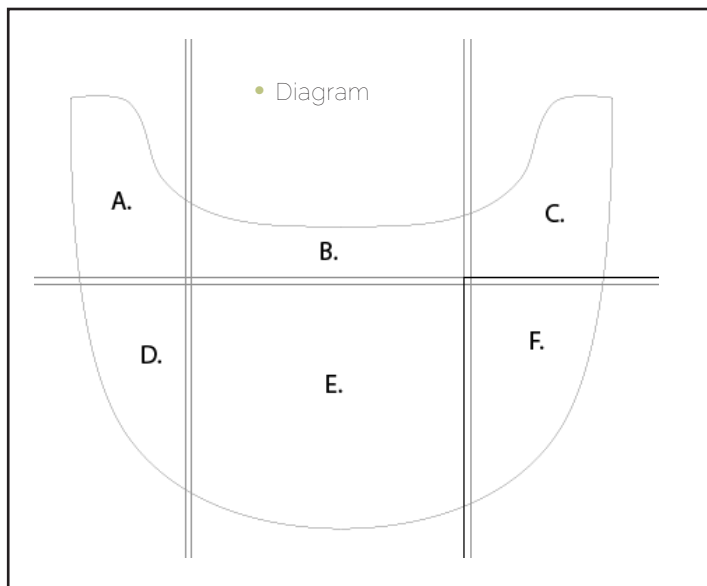
- The sew the back stripped piece and sew onto the opposite of the side strip.
- Repeat same method with the lining pieces from fabric L.
- To continue take the lining and the cover pin face to face.
- Sew all round leave an opening on side or bottom.
- Then flip bag inside out, handstich the opening closed.
- Feel free to place a handle strap of your choice !!
- Enjoy your Indie super chic Medley bag !:



artgalleryfabrics.com

NOTE: While all possible care has been taken to ensure the accuracy of this pattern, We are not responsible for printing errors or the way in which individual work varies. Please read instructions carefully before starting the construction of this quilt. If desired, wash and iron your fabrics before starting to cut.

© 2017 Courtesy of Art Gallery Quilts LLC. All Rights Reserved.





B.

C.



TEMPLATE

D.

E.



F.

Happy Sewing

#PatBravoDesign



To see more patterns, fabrics
and lots of inspiration visit:

patbravo.com

NOTE: While all possible care has been taken to ensure the accuracy of this pattern, we are not responsible for printing errors or the way in which individual work varies. Please read instructions carefully before starting the construction of this quilt. If desired, wash and iron your fabrics before starting to cut.

© 2016 Courtesy of Pat Bravo All Rights Reserved.