



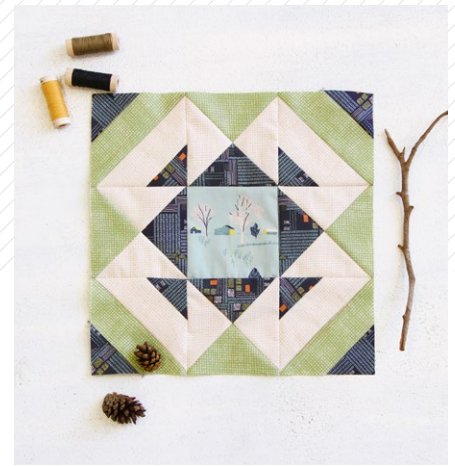
A quilt square is displayed on a white surface. The quilt features a central panel with a landscape illustration of trees and houses. This central panel is surrounded by a ring of dark blue fabric with a geometric pattern. The outermost ring consists of green fabric with a small white dot pattern. The quilt is surrounded by various objects: three spools of thread (brown, black, and yellow) are in the top left; a pinecone is in the bottom left; and a dried branch is on the right.





Quilt BLOCK collection

BLOCK DESIGNED BY AGF STUDIO AGFstudio



FABRICS DESIGNED BY SHARON HOLLAND

PLANT



BON-38500
PERENNIAL OPTIMISM



BON-38501
GATHER MELLOW



BON-38502
GRAZING SIENNA



BON-38503
HAYMOW EARLY



BON-38505
VINE FLORET



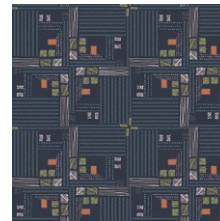
BON-38506
PRAIRIE MAZE



BON-38508
SCENIC BLUE SKY



BON-38509
PLAIN WEAVE THATCH



BON-38510
TARTAN FIELD MIDNIGHT

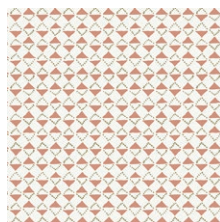


BON-38511
VINE BRAID

HARVEST



BON-48500
PERENNIAL RENEWAL



BON-48501
GATHER RUSTIC



BON-48502
GRAZING BRINDLE



BON-48503
HAYMOW STACK



BON-48504
ABUNDANT GALVANIZE



BON-48506
PRAIRIE CRIMSON



BON-48507
ARBORESCENT SEASONS



BON-48509
PLAIN WEAVE FLAX



BON-48510
TARTAN FIELD SNOW



BON-48511
VINE UMBRA



FINISHED SIZE | 12' x 12'

CUTTING DIRECTIONS

1/4" seam allowances are included.

- Fabric A:-BON-38508
- One (1) 4 1/2' square
- Fabric B:-BON-38510
- One (1) 5 1/2' Square
- Two (2) 2 1/2 ' x WOF Strip
- Fabric C:-BON-38509
- One (1) 5 1/2' square
- One (1) 2 ' x WOF Strips
- Fabric D:-BON-48509
- Two (2) 5 1/2' Square
- One (1) 2 ' x WOF Strip

CONSTRUCTION

Sew all rights sides together with 1/4" seam allowance.

- Sew your WOF strips together following Diagram 1.. Alternate sewing starting from the left to attach one strip and then start sewing from the right to attach the next and so on. Repeat this process to complete your strip set.

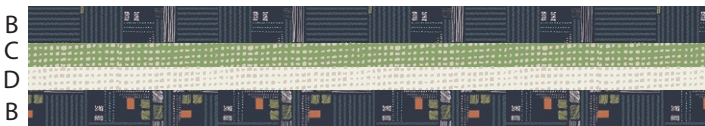


DIAGRAM 1

- Press seams in one direction. Take a 4 1/2' square ruler and place the 45 degree line on the center seam of your strip set..
- Cut out four 4 1/2' squares from your strip set.

(Diagram 2)

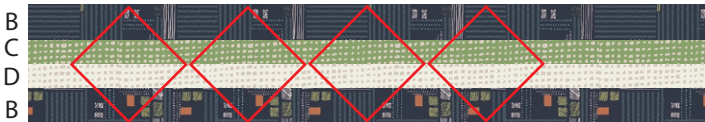
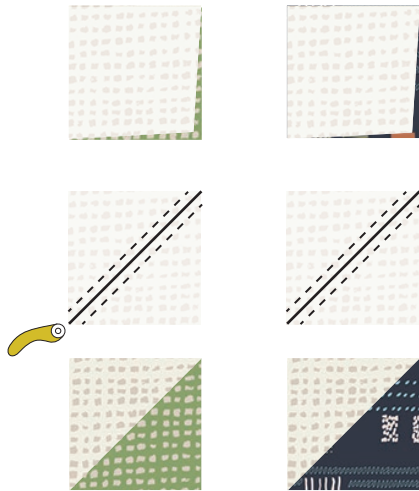


DIAGRAM 2

- To make a B/D hst and a C/D hst take a 5 1/2' square from Fabric B and C and place a 5 1/2' square from Fabric D right sides together on both squares.
- Draw a diagonal line from the top corner to the bottom corner. Sew 1/4' on each side of the line.
- Cut on the line you drew to reveal two B/D and two C/D hst's.

(Diagram 3)



Two C/D Two B/D

DIAGRAM 3

- Cut all of your hst's in half on the diagonal..
- Sew all your B/D triangles to a C/D triangle to form four hourglass blocks.

(Diagram 4)

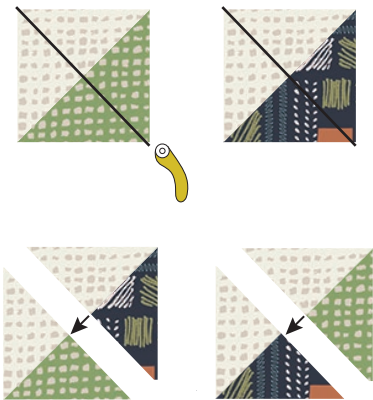


DIAGRAM 4

- Place all your pieces out as they should be sewn following Diagram 5.
- Sew row 1 - 3 together, pressing seams in alternating directions.

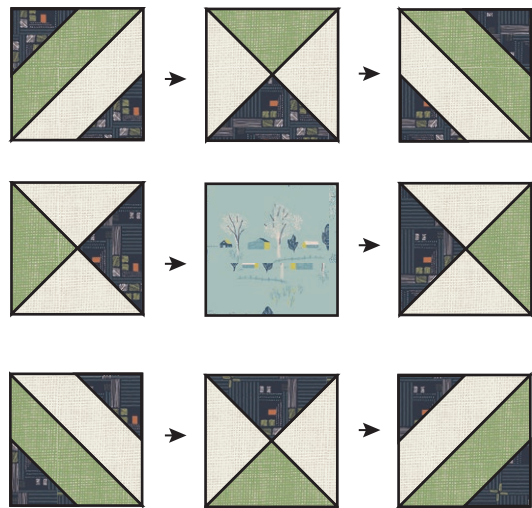


DIAGRAM 5

XXXXXXXXXXXXXXXXXXXXXXXXXXXXXXXXXXXX

Congratulations
& enjoy

XXXXXXXXXXXXXXXXXXXXXXXXXXXXXXXXXXXX



artgalleryfabrics.com

NOTE: While all possible care has been taken to ensure the accuracy of this pattern, We are not responsible for printing errors or the way in which individual work varies. Please read instructions carefully before starting the construction of this quilt. If desired, wash and iron your fabrics before starting to cut.

© 2017 Courtesy of Art Gallery Quilts LLC. All Rights Reserved.