

XXXXXX

## A collection of three decorative pillows. The largest pillow is white with a bold black geometric pattern of triangles and chevrons. A smaller yellow pillow with white geometric patterns is partially visible behind it. A small black and white patterned pillow is also visible. The pillows are resting on a dark metal stand.

The logo for 'capsules by AGF' features the word 'capsules' in a lowercase, textured, sans-serif font. Above the text is a thick, dark, curved brushstroke. Below the text are four small icons: a grid of red and black lines, a black circle with a white 'a', two white chevrons pointing left, and a yellow triangle with a black outline. To the right, the text 'by AGF' is written in a cursive script, with 'AGF' in a bold, uppercase, sans-serif font.

XXXXXXXXXXXXXXXXXXXXXXXXXXXX



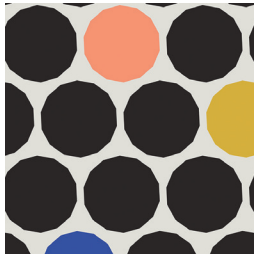
# SHAPING PIECES

AGFstudio

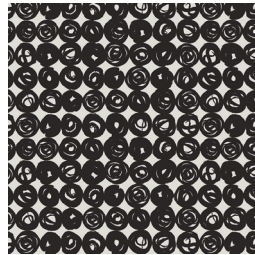


## TAKE SHAPE

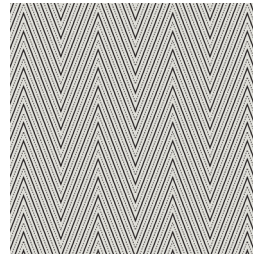
FABRICS DESIGNED BY AGF STUDIO



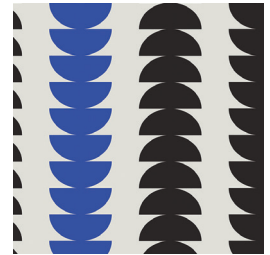
CAP-S-4000  
ROUNABOUT SPHERES



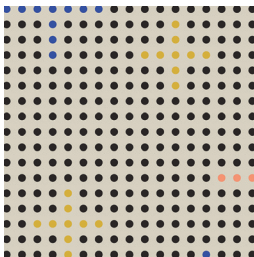
CAP-S-4001  
SWIRLING DOTS



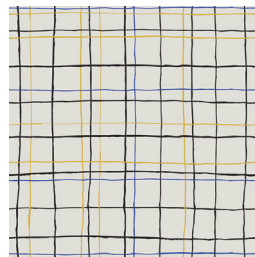
CAP-S-4002  
ZIGZAG TRACK



CAP-S-4003  
FLIPPED SEMICIRCLES



CAP-S-4004  
AXIS POINTS



CAP-S-4005  
IRREGULAR QUADRANTS



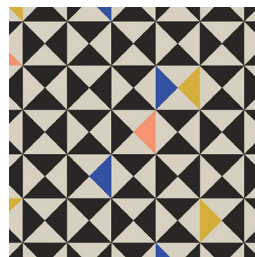
CAP-S-4006  
TRILATERAL STRIPE



CAP-S-4007  
ALTERNATE ANGLES



CAP-S-4008  
SLANTED LINES



CAP-S-4009  
RANDOM TRIG



FEEL THE DIFFERENCE © 2017 Courtesy of Art Gallery Quilts LLC. All Rights Reserved.



# SHAPING PIECES

FINISHED SIZE | 18' x 18'

## FABRIC REQUIREMENTS

Fabric <b>A</b>	CAP-S-4001	5/8 yd.
Fabric <b>B</b>	CAP-S-4006	F8.
Fabric <b>C</b>	CAP-S-4007	F8.
Fabric <b>D</b>	P.E 433	5/8 yd.

**BACKING FABRIC**  
CAP-S-4001 included

## CUTTING DIRECTIONS

*1/4" seam allowances are included.  
WOF means width of fabric.*

One (1) exact measurement from template below of Fabric **A** (Bottom right piece)

One (1) 10' x 15' rectangle from Fabric **B**

One (1) 12' x 10' rectangle from Fabric **C**

One (1) 17½' x 20½' rectangle from Fabric **D**

Two (2) 18' x 12' rectangles from Fabric **A**

## CONSTRUCTION

*Sew all rights sides together with 1/4" seam allowance.*

- Use the template from below to begin paper piecing the fabrics.
- First, take the 12' x 10' rectangle from Fabric **C** and place it right on top of bottom left corner. (Face up)
- Now take the 10' x 15' rectangle from Fabric **B** face to face with the Fabric **C**.

XXXXXXXXXXXXXXXXXXXXXXXXXXXXXXXXXXXX

- Use the line between shapes and leave 1/4" above the line.

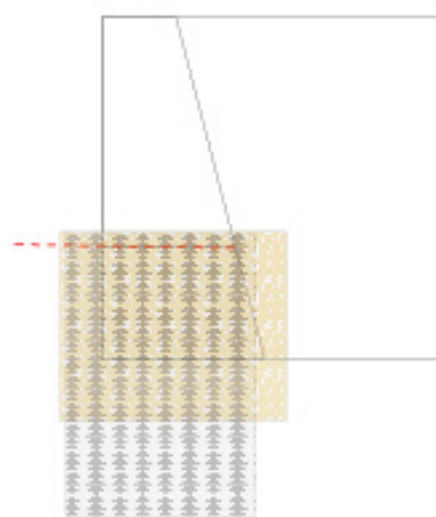


DIAGRAM 1

- Sew directly on line. Open, fold, and press.
- Now take the 17½' x 20½' rectangle from Fabric **D** and place face to face to both previously sewn pieces.
- Also leave 1/4" seam allowance away from line.
- Sew directly on line, open, and press.
- Use diagram below as a reference.

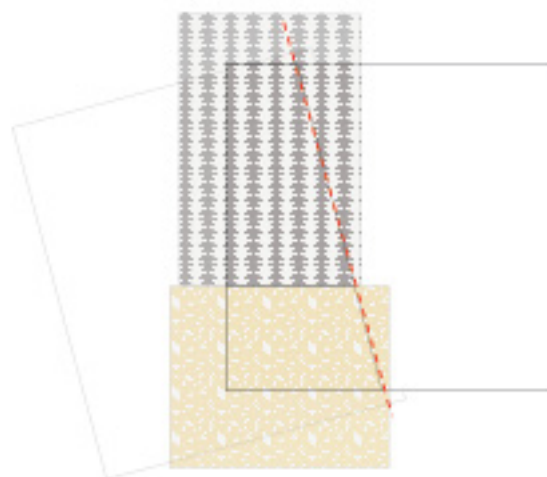


DIAGRAM 2

- Once all the pieces are sewn, measure accordingly and begin to trim off all excess fabric.
- Pillow should measure at 18½" x 18½".
- Following take the cut of template piece from Fabric A and place it on the bottom right corner.
- Stitch at a ¼" around all four (4) edges.

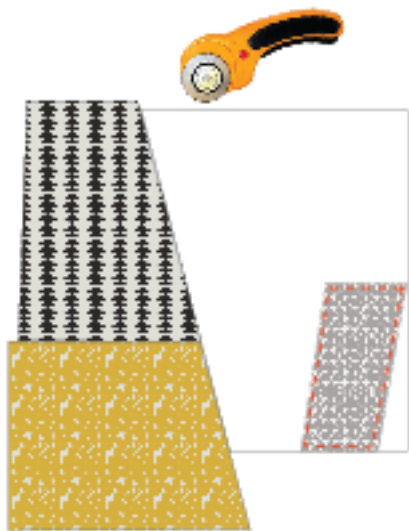


DIAGRAM 3

- Lastly, hand-stitch the curved arrow line starting at the upper right corner and work your way down. (Feel free to add your own creative touch)
- There you have it, enjoy your minimalist paper piecing pillow !!!

## CREATING THE BACK PILLOW

*Sew all rights sides together with ¼" seam allowance. Press open.*

- To make a envelope back for your pillow take both 18" x 12" rectangles and fold one 12" side on each rectangle in 1/2" and press and then fold another 1/2" and press.
- Top stitch as close to the edge as possible.
- Place rectangles right side together on top of each other to the front of your pillow and stitch all the way around your pillow at ¼" seam allowance.
- Clip corners at seam allowance and flip piece to the right side of the fabric.
- Fill pillow with a 18" x 18" pillow form and enjoy!



[artgalleryfabrics.com](http://artgalleryfabrics.com)

NOTE: While all possible care has been taken to ensure the accuracy of this pattern, We are not responsible for printing errors or the way in which individual work varies.

Please read instructions carefully before starting the construction of this quilt. If desired, wash and iron your fabrics before starting to cut.

© 2017 Courtesy of Art Gallery Quilts LLC. All Rights Reserved.