

This image displays a complex quilt square design, likely a template for a patchwork quilt. The central area is composed of a grid of diamond-shaped blocks. These blocks are arranged in a repeating pattern, with some blocks containing solid colors and others featuring various patterns. The patterns include floral motifs, geometric designs, and abstract shapes. The colors used are a wide range of bright and muted tones, including yellows, oranges, pinks, blues, greens, and purples. The entire quilt square is framed by a wide yellow border with a repeating geometric pattern. The design is symmetrical and balanced, with a clear focus on color and pattern contrast.

XXXXXXXXXXXXXXXXXXXXXXXXXXXX

A DIVISION OF AGF

FIESTA GARDEN

DANA WILLARD

QUILT DESIGNED BY DANA WILLARD



FABRICS DESIGNED BY DANA WILLARD



VIVA



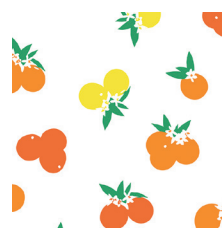
FFN-13840
MEXICAN DRESS MORNING



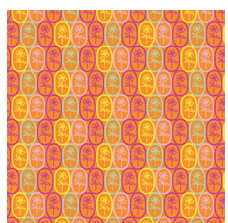
FFN-13841
PAPEL PICADO MESQUITE



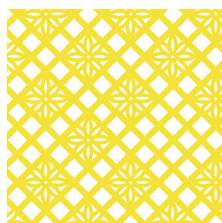
FFN-13842
DESERT FLOR SUMMER



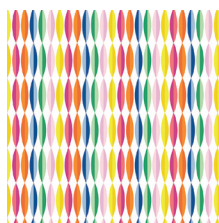
FFN-13843
CITRUS SUNRISE



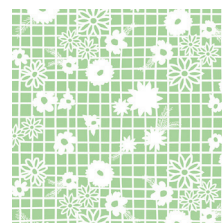
FFN-13844
FLORITA PARTY



FFN-13845
ZOCALO LEMON



FFN-13846
HAPPY STREAMERS

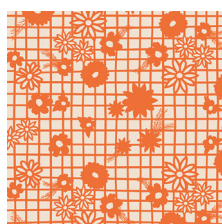


FFN-13848
PAPEL PICADO MENTA

SIESTA



FFN-23840
MEXICAN DRESS MIDNIGHT



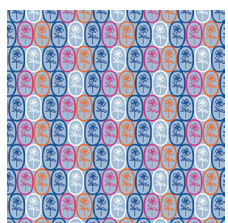
FFN-23841
PAPEL PICADO NARANJA



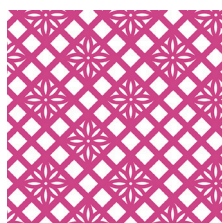
FFN-23842
DESERT FLOR SPRING



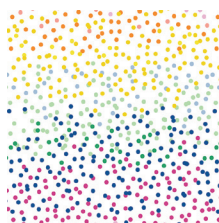
FFN-23843
CITRUS SUNSET



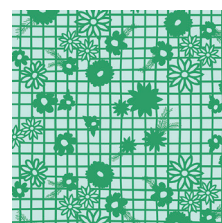
FFN-23844
FLORITA AZUL



FFN-23845
ZOCALO RASPBERRY



FFN-23847
PIÑATA CONFETTI



FFN-23848
PAPEL PICADO VERDE



FEEL THE DIFFERENCE © 2016 Courtesy of Art Gallery Quilts LLC. All Rights Reserved.

FIESTA GARDEN

FINISHED SIZE | 53" x 75"

FABRIC REQUIREMENTS

Fabric A	PE -438	¼ yd.
Fabric B	PE -450	¼ yd.
Fabric C	PE -459	¼ yd.
Fabric D	PE- 461	¼ yd.
Fabric E	PE- 449	¼ yd.
Fabric F	PE- 458	¼ yd.
Fabric G	PE- 439	¼ yd.
Fabric H	PE- 451	¼ yd.
Fabric I	PE- 462	¼ yd.
Fabric J	PE- 434	¼ yd.
Fabric K	PE- 417	¼ yd.
Fabric L	PE- 455	¼ yd.
Fabric M	PE- 420	¼ yd.
Fabric N	PE- 411	¼ yd.
Fabric O	FFN- 13840	¼ yd.
Fabric P	FFN- 13842	¼ yd.
Fabric Q	FFN- 13843	¼ yd.
Fabric R	FFN- 13845	¼ yd.
Fabric S	FFN- 13844	¼ yd.
Fabric T	FFN- 23847	¼ yd.
Fabric U	FFN- 13841	¼ yd.
Fabric V	FFN- 13848	¼ yd.
Fabric W	FFN- 23840	¼ yd.
Fabric X	FFN- 23842	¼ yd.
Fabric Y	FFN- 23843	¼ yd.
Fabric Z	FFN- 23845	¼ yd.
Fabric AA	FFN- 23844	¼ yd.
Fabric BB	FFN- 13846	¼ yd.
Fabric CC	FFN- 23848	¼ yd.
Fabric DD	FFN- 23841	¼ yd.
Fabric EE	PE- 433	2 ½ yd.

BACKING FABRIC

FFN- 13840 4 yds. (Suggested)

BINDING FABRIC

FFN- 13845- (Fabric **R**) (included)

XXXXXXXXXXXXXXXXXXXXXXXXXXXX

CUTTING DIRECTIONS

¼" seam allowances are included.
WOF means width of fabric.

24 (6 ½") squares from fabrics **A - G** 3 (**A**), 3 (**B**), 5 (**C**), 3 (**D**), 4 (**E**), 3 (**F**), 3 (**G**)

24 (6 ½") squares from fabrics **H - N** 5 (**H**), 3 (**I**), 5 (**J**), 3 (**K**), 3 (**L**), 3 (**M**), 2 (**N**),

11 (6 ½") squares from fabrics **O - V** 2 (**O**), 1 (**P**), 1 (**Q**), 2 (**R**), 2 (**S**), 1 (**T**), 1 (**U**), 1 (**V**)

12 (6 ½") squares from fabrics **W - EE** , 2 (**W**), 2 (**X**), 2 (**Y**), 2 (**Z**), 1 (**AA**), 1 (**BB**), 1 (**CC**), 1 (**DD**), 12 (**EE**)

83 (2" x 10") long rectangles fabric **EE**
83 (2" x 6 ½") short rectangles fabric **EE**

CONSTRUCTION

Sew all rights sides together with ¼" seam allowance.

- In order to create a diagonal pyramid start with the top square by sewing right sides together, (2' x 6 ½") of Fabric **EE** onto side of square.
- Sew the (2' x 8") rectangle of Fabric **EE** to the top of square.

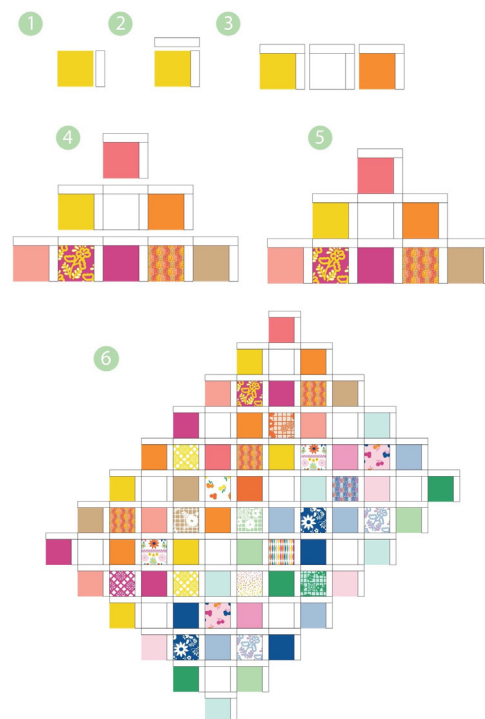


DIAGRAM 1

ASSEMBLING THE QUILT TOP

Sew all rights sides together with $\frac{1}{4}$ " seam allowance. Press open.

- Proceed with same sequence to the next row using 2 more squares.
- Each row following you're going to add to extra squares.
- Keep in mind the 6th, 7th, & 8th row are going to be the longest rows containing a total of 11 square blocks.
- Sew the first row to the second using $\frac{1}{4}$ " seam allowance, 2nd to 3rd, 3rd to 4th, etc.
- Take 4 piece binding Fabric **R** place on the outer part of squares, creating a border

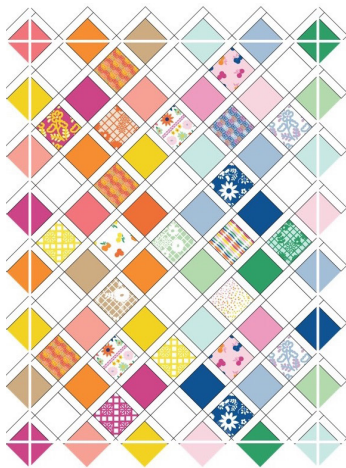


DIAGRAM 3

8



DIAGRAM 2

QUILT ASSEMBLY

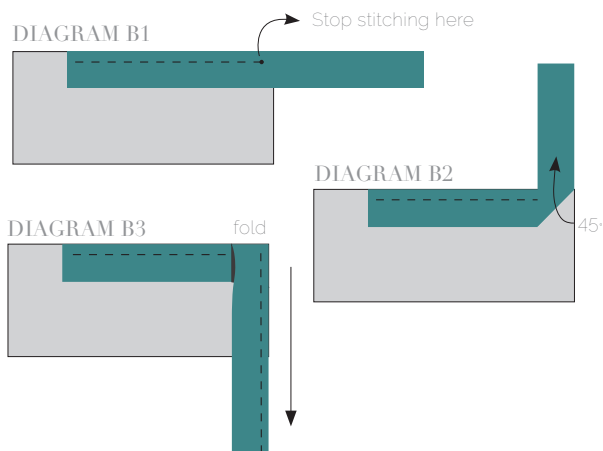
- Cut Backing Fabric into 2 equal rectangles, each $2 \frac{1}{4}$ yd. x WOF. Trim off selvage edges and sew them together along this lengthwise edge, right sides together. Press open the seam.
- Place BACKING FABRIC on a large surface wrong side up. Stretch it with masking tape against that surface.
- Place BATTING on top of backing fabric.
- Place TOP on top of the batting with right side facing up. Smooth away wrinkles using your hands.
- Pin all layers together and baste with basting thread, using long stitches. You can also use safety pins to join the layers.

- Machine or hand quilt starting at the center and working towards the corners. Remember that quilting motifs are a matter of personal preference. Have fun choosing yours!
- After you finished, trim excess of any fabric or batting, squaring the quilt to proceed to bind it.

BINDING

Sew rights sides together.

- Cut enough strips $1\frac{1}{2}$ ' wide by the width of the fabric **R** to make a final strip 265' long. Start sewing the binding strip in the middle of one of the sides of the quilt, placing the strip right side down and leaving an approximated 5' tail. Sew with $\frac{1}{4}$ ' seam allowance (using straight stitch), aligning the strip's raw edge with the quilt top's raw edge.
- Stop stitching $\frac{1}{4}$ ' before the edge of the quilt (**DIAGRAM B1**). Clip the threads. Remove the quilt from under the machine presser foot. Fold the strip in a motion of 45° and upward, pressing with your fingers (**DIAGRAM B2**). Hold this fold with your finger, bring the strip down in line with the next edge, making a horizontal fold that aligns with the top edge of the quilt (**DIAGRAM B3**). Start sewing at $\frac{1}{4}$ ' of the border, stitching all the layers. Do the same in the four corners of the quilt.



- Stop stitching before you reach the last 5 or 6 inches. Cut the threads and remove the quilt from under the machine presser foot. Lay the loose ends of the binding flat along the quilt edge, folding the ends back on themselves where they meet. Press them together to form a crease. Using this crease as the stitching line, sew the two open ends of the binding with right sides together (you can help yourself marking with a pencil if the crease is difficult to see).

- Trim seam to $\frac{1}{4}$ ' and press open. Complete the sewing. Turn binding to back of the quilt, turn raw edge inside and stitch by hand using blind stitch.
- Congrats! You've finished your festive Fiesta Garden, Quilt!



artgalleryfabrics.com

NOTE: While all possible care has been taken to ensure the accuracy of this pattern, We are not responsible for printing errors or the way in which individual work varies. Please read instructions carefully before starting the construction of this quilt. If desired, wash and iron your fabrics before starting to cut.

© 2016 Courtesy of Art Gallery Quilts LLC. All Rights Reserved.