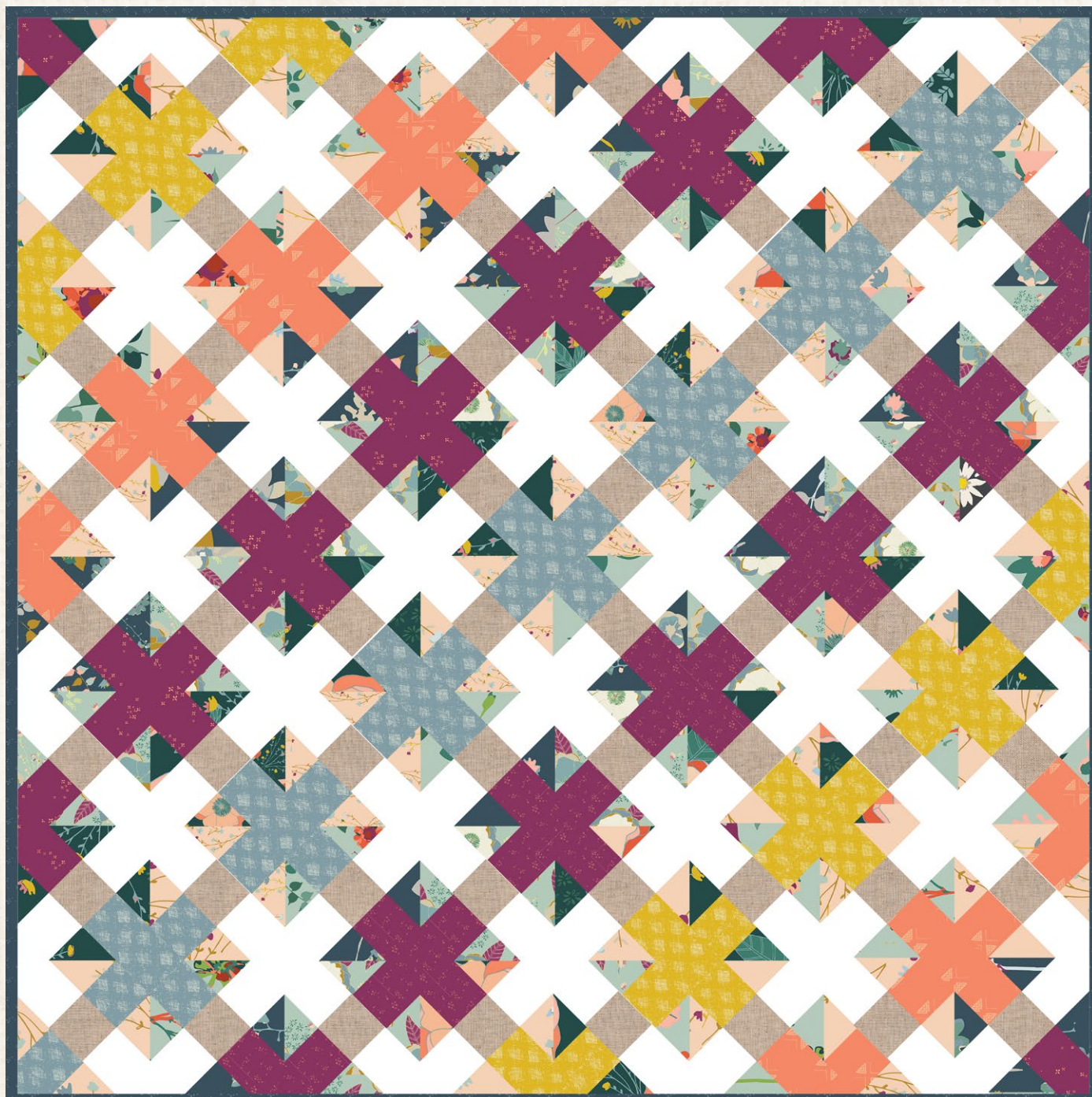


Impressions



Impressions

QUILT DESIGNED BY AGF studio

Garden Dreamer

FABRICS DESIGNED BY Maureen
Cracknell

GREENHOUSE DAWN



GRD-79900
SPRINKLED PEONIES FRESH



GRD-79901
TERRA FIRMA SUNLIT



GRD-79902
MOMENT IN TIME LIGHT



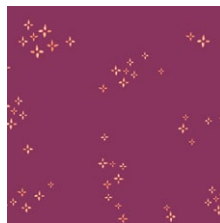
GRD-79903
FLOWER WALTZ



GRD-79904
BUMBLE BEEZ



GRD-79905
DIAMOND FRAGMENTS ROSE



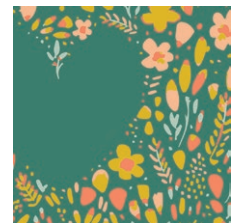
GRD-79906
TWINKLESTAR BERRY



GRD-79907
CLIMBING POSIES PALE



GRD-79908
TRIANGULAR IMPRESSION



GRD-79909
LOVE GARDEN VIBRANT

GLASSHOUSE DUSK



GRD-89900
SPRINKLED PEONIES SERENE



GRD-89901
TERRA FIRMA HUMID



GRD-89902
MOMENT IN TIME DIM



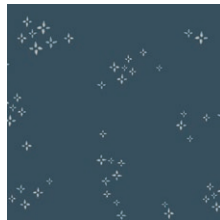
GRD-89903
FLOWER DANCE



GRD-89904
BUMBLE BUZZ



GRD-89905
DIAMOND FRAGMENTS GOLD



GRD-89906
TWINKLESTAR BLU



GRD-89907
CLIMBING POSIES BLUSH



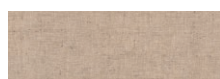
GRD-89908
TRIANGULAR REFLECTION



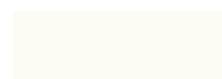
GRD-89909
LOVE GARDEN CALM



FEEL THE DIFFERENCE © 2016 Courtesy of Art Gallery Quilts LLC. All Rights Reserved.



DEN-L-4000
SOFT SAND



PE-408
WHITE LINEN

FINISHED SIZE | 70" x 70"

FABRIC REQUIREMENTS

Fabric A	GRD-89902	3/8 yd.
Fabric B	GRD-89900	5/8 yd.
Fabric C	GRD-79900	5/8 yd.
Fabric D	GRD-89907	3/4 yd.
Fabric E	GRD-79902	3/8 yd.
Fabric F	GRD-79906	7/8 yd.
Fabric G	GRD-79901	5/8 yd.
Fabric H	GRD-79908	5/8 yd.
Fabric I	GRD-89901	2/3 yd.
Fabric J	PE-408	3 1/8 yd.
Fabric K	DEN-L-4000	1 1/4 yd.

BACKING FABRIC

GRD-89905 4 1/2 yds. *(Suggested)*

BINDING FABRIC

GRD-89906- 3/8 yd.

CUTTING DIRECTIONS

1/4" seam allowances are included.

- Twenty Four (24) 3 7/8" squares from Fabric **A**
- Thirty Two (32) 3 7/8" squares from Fabric **B**
- Thirty Four (34) 3 7/8" squares from Fabric **C**
- Fifty (50) 3 7/8" squares from Fabric **D**
- Twenty Five (25) 3 7/8" squares from Fabric **E**
- Sixteen (16) 3 1/2" x 9 1/2" strips from Fabric **F**
- Eight (8) 3 1/2" x 9 1/2" strips from Fabric **G**
- Eight (8) 3 1/2" x 9 1/2" strips from Fabric **H**
- Nine (9) 3 1/2" x 9 1/2" strips from Fabric **I**
- Thirty Two (32) 3 1/2" squares from Fabric **F**
- Sixteen (16) 3 1/2" squares from Fabric **G**
- Sixteen (16) 3 1/2" squares from Fabric **H**
- Eighteen (18) 3 1/2" squares from Fabric **I**

- Ten (10) 3 1/2" x WOF strips from Fabric **J**
- Fifty Six (56) 3 1/2" x 9 1/2" strips from Fabric **J**
- Five (5) 3 1/2" x WOF strips from Fabric **K**
- Forty Eight (48) 3 1/2" squares from Fabric **K**

Half Square Triangle

CONSTRUCTION

Sew all rights sides together with 1/4" seam allowance.

- To create two half square triangles with Fabric **A** and Fabric **B**, take 3 7/8" x 3 7/8" squares from both fabrics. (**DIAGRAM 1**)

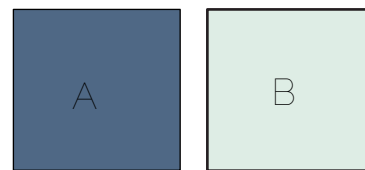


DIAGRAM 1

- Place on top with right sides together! Draw a diagonal line from one corner to the other.
- Sew on each side of the line you drew at 1/4". (**DIAGRAM 2**)

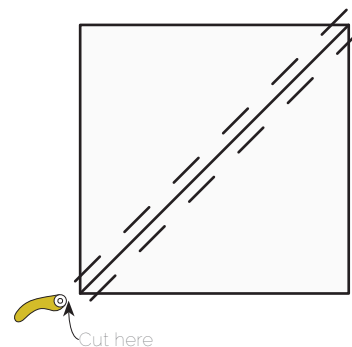


DIAGRAM 2

- Cut on your diagonal line. Press seams open (**DIAGRAM 3**)

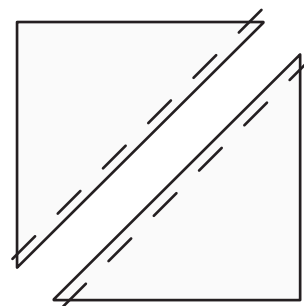


DIAGRAM 3

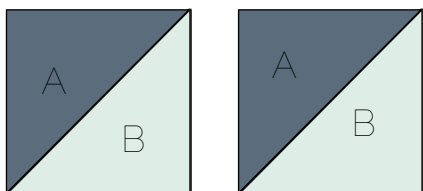


DIAGRAM 4

- You will need the following half square triangles.

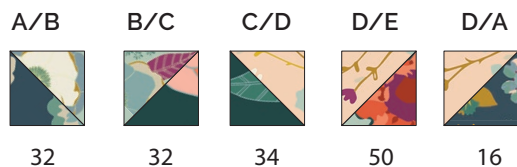


DIAGRAM 5

BLOCK CONSTRUCTION

- To create your block take a **A/B** hst and sew to a 3 1/2' square from Fabric **F** and then sew a **B/C** hst. (Row 1)
- Sew another row like this making sure you follow Diagram 6 for fabric orientation.
- Sew a 3 1/2' x 9 1/2' strip from Fabric **F** in between these two rows.

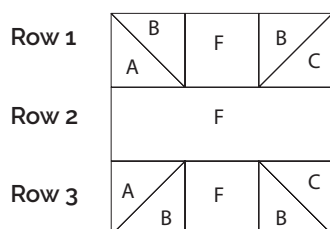
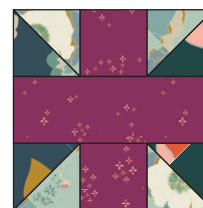


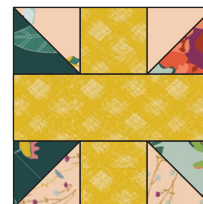
DIAGRAM 6

- You will need sixteen of Block A, eight of Block B, eight of Block C and Nine of Block D. (Diagram 7)

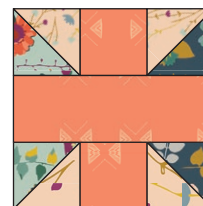


Block B

Eight



Block C
Eight



Block D

Nine

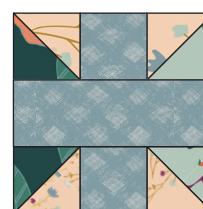


DIAGRAM 7

Border pieces:

- To create your border pieces sew three 3 1/2" x WOF strips together and cut 3 1/2" wide strips. (Diagram 8)
- You should get 12 per pieced strip.
- You will need fifty in total.
- Sew your border pieces to each side of your block following the Quilt Illustration as a guide.



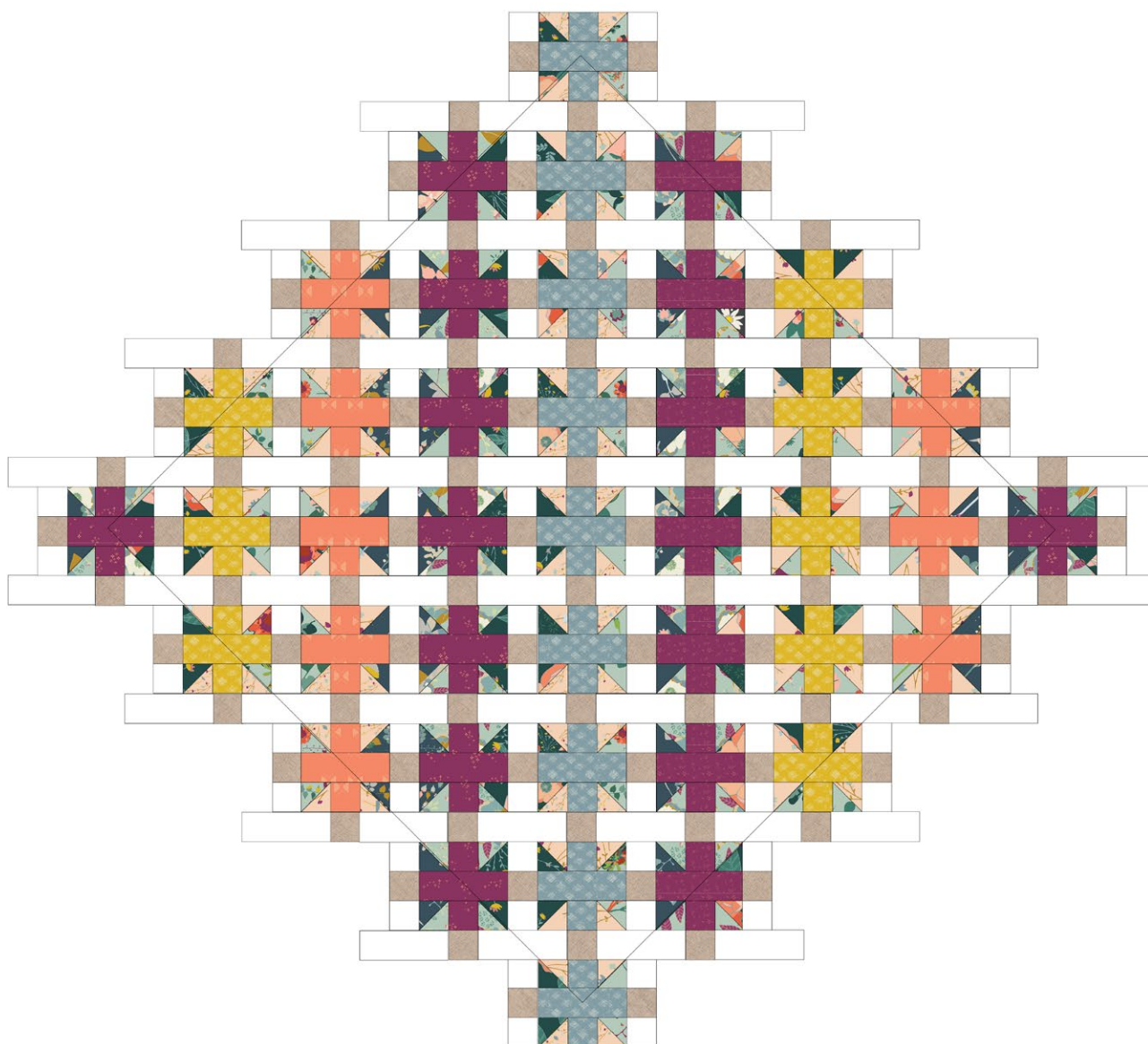
12 per strip set

DIAGRAM 8

Creating your Sashing

- Sew a 3 1/2" x 9 1/2" strip from Fabric **J** to a 3 1/2" square from Fabric **L** and then sew another 3 1/2" x 9 1/2" strip from Fabric **M**.
- Keep alternating like this until you get the desired length.
- Follow the Quilt Assembly Diagram.

Quilt Assembly Diagram



QUILT ASSEMBLY

Sew rights sides together.

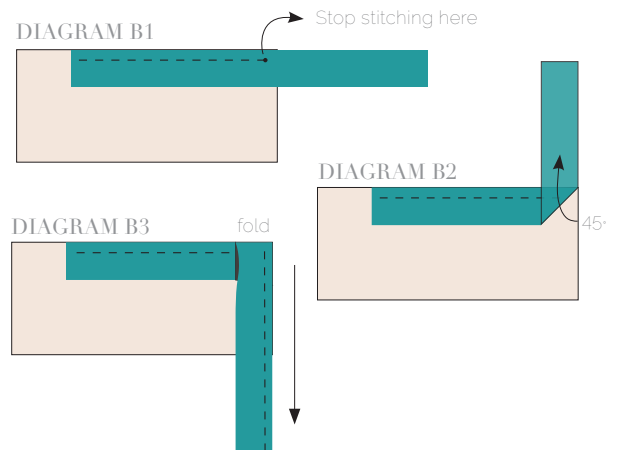
- Place BACKING FABRIC on a large surface wrong side up. Stretch it with masking tape against that surface.
- Place BATTING on top of backing fabric.
- Place TOP on top of the batting with right side facing up. Smooth away wrinkles using your hands.
- Pin all layers together and baste with basting thread, using long stitches. You can also use safety pins to join the layers.
- Machine or hand quilt starting at the center and working towards the corners. Remember that quilting motifs are a matter of personal preference. Have fun choosing yours!
- After you finished, trim excess of any fabric or batting, squaring the quilt to proceed to bind it.

BINDING

Sew rights sides together.

- Cut enough strips $1\frac{1}{2}$ " wide by the width of the fabric **GRD-89906** to make a final strip 290" long. Start sewing the binding strip in the middle of one of the sides of the quilt, placing the strip right side down and leaving an approximated 5" tail. Sew with $\frac{1}{4}$ " seam allowance (using straight stitch), aligning the strip's raw edge with the quilt top's raw edge.
- Stop stitching $\frac{1}{4}$ " before the edge of the quilt (**DIAGRAM B 1**). Clip the threads. Remove the quilt from under the machine presser foot. Fold the strip in a motion of 45° and upward, pressing with your fingers (**DIAGRAM B2**). Hold this fold with your finger, bring the strip down in line with the next edge, making a horizontal fold that aligns with the top edge of the quilt (**DIAGRAM B3**). Start sewing at $\frac{1}{4}$ " of the border, stitching all the layers. Do the same in the four corners of the quilt.

- Stop stitching before you reach the last 5 or 6 inches. Cut the threads and remove the quilt from under the machine presser foot. Lay the loose ends of the binding flat along the quilt edge, folding the ends back on themselves where they meet. Press them together to form a crease. Using this crease as the stitching line, sew the two open ends of the binding with right sides together (you can help yourself marking with a pencil if the crease is difficult to see).
- Trim seam to $\frac{1}{4}$ " and press open. Complete the sewing. Turn binding to back of the quilt, turn raw edge inside and stitch by hand using blind stitch.



artgalleryfabrics.com

NOTE: While all possible care has been taken to ensure the accuracy of this pattern, We are not responsible for printing errors or the way in which individual work varies. Please read instructions carefully before starting the construction of this quilt. If desired, wash and iron your fabrics before starting to cut.

© 2016 Courtesy of Art Gallery Quilts LLC. All Rights Reserved.