

# happy song



happy song

SEW Caroline

QUILT DESIGNED BY SEW CAROLINE

here comes the FUN

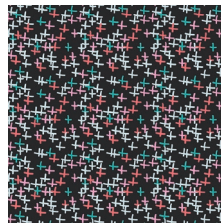
FABRICS DESIGNED BY SEW CAROLINE



WARM LANE



HCF-59300  
BLOOM MONTAGE LIGHT



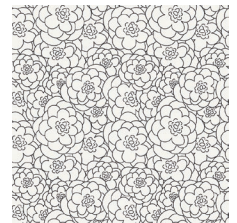
HCF-59301  
ACROSS SPARKS BLACK



HCF-59302  
TUNES SHINE



HCF-59303  
BLOCK STENCILS BURST



HCF-59304  
COROLLAS ASHEN



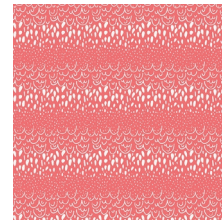
HCF-59305  
STREET ART SUN



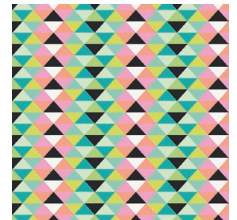
HCF-59306  
HAPPY CHEER



HCF-59307  
IMPROV STROKES CITRUS



HCF-59308  
SPRAYED DOODLES CORAL

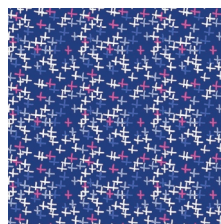


HCF-59309  
TRIPIXELS SOFT

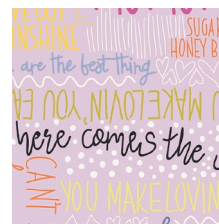
COOL STREET



HCF-69300  
BLOOM MONTAGE INTENSE



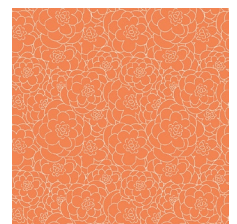
HCF-69301  
ACROSS SPARKS BLUE



HCF-69302  
TUNES GLIMMER



HCF-69303  
BLOCK STENCILS POP



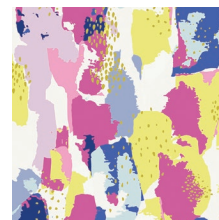
HCF-69304  
COROLLAS TANGERINE



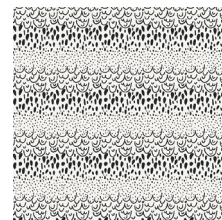
HCF-69305  
STREET ART MOON



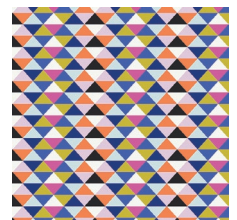
HCF-69306  
HAPPY WHISPER



HCF-69307  
IMPROV STROKES BERRY



HCF-69308  
SPRAYED DOODLES NOIR



HCF-69309  
TRIPIXELS LOUD





FINISHED SIZE | 85" x 85"

## FABRIC REQUIREMENTS

Fabric <b>A</b>	HCF-59304	2¼ yd.
Fabric <b>B</b>	HCF-69306	¾ yd.
Fabric <b>C</b>	HCF-59309	½ yd.
Fabric <b>D</b>	HCF-59303	¾ yd.
Fabric <b>E</b>	HCF-69304	¾ yd.
Fabric <b>F</b>	HCF-59308	¾ yd.
Fabric <b>G</b>	PE-433	2¼ yd.
Fabric <b>H</b>	HCF-59300	1½ yd.
Fabric <b>I</b>	HCF-59307	⅝ yd.

### BACKING FABRIC

HCF-40203 5 yds. (*Suggested*)

### BINDING FABRIC

HCF-59304 (Fabric **A**) (*included*)

## CUTTING DIRECTIONS

*¼" seam allowances are included.  
WOF means width of fabric.*

Twelve (12) 12½" squares from fabric **A**

Two (2) 6½" X 12½" rectangles from fabrics **B, D, E, F, & I**

Four (4) 3½" X 6½" rectangles from fabric **B, D, E, F, & I**

Three (3) 6½" X 12½" rectangles from fabric **C**

Six (6) 3½" X 12½" rectangles from fabric **C**

Fifty two (52) 3½" squares from fabric **G**

Twenty (20) 3½" X 12½" rectangles from fabric **G**

Eight (8) 3½" strips X wof from fabric **G**

Eight (8) 6½" strips X wof from fabric **H**

## CONSTRUCTION

*Sew all rights sides together with ¼" seam allowance.*

- Make each 3½" X 6½" rectangle with two (2) 3½" squares. Sew the squares to both ends to create one strip.



DIAGRAM 1

- To create a block, take two strips of the same print created in the first step and pair them with a 6½" X 12½" rectangle of the same print and sew them together.

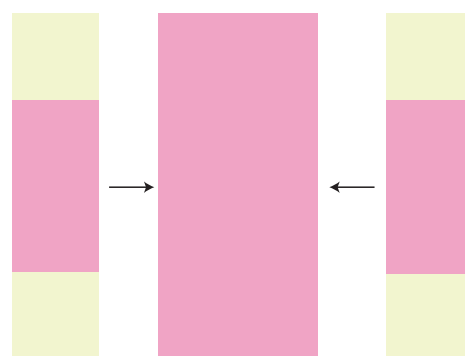


DIAGRAM 2

- Once all the blocks are finished, use the layout guide to start placing your blocks in the appropriate positions. In between each block in the row, sew a 3½" X 12½" rectangle.

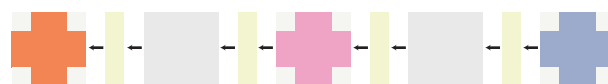


DIAGRAM 3

- Next, take the eight 3½' X wof strips and make four pairs of two. Sew them together along the short ends. Sew these long strips in between the rows you sewed in the step above. Trim off the excess.

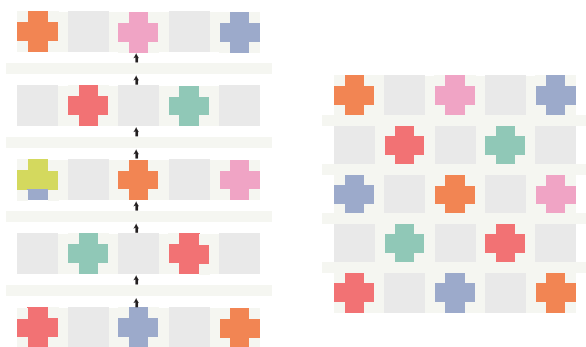
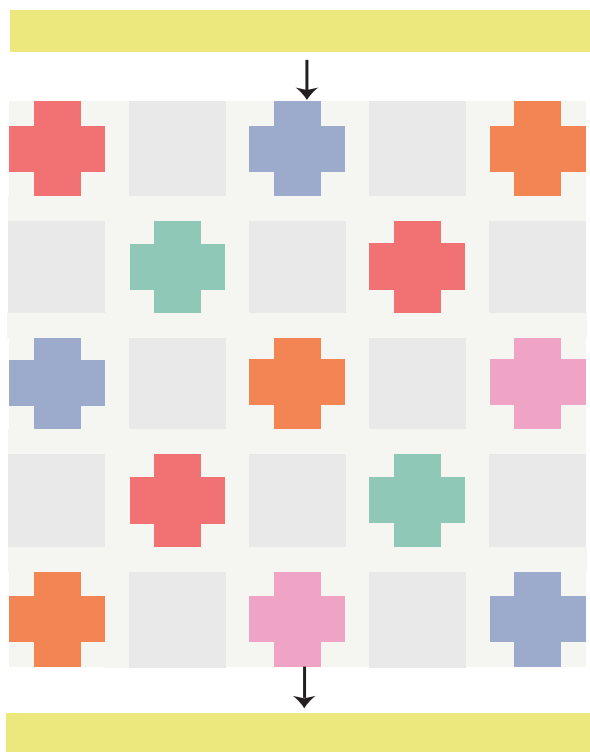


DIAGRAM 4

## ASSEMBLING THE TOP

*Sew all rights sides together with ¼" seam allowance. Press open.*

- Next, take the eight 6½' X wof strips and make four pairs of two. Sew them together along the short ends. These are your border strips and should be sewn along all four sides. Start by sewing one strip to the top and bottom and then sew the remaining to the sides.



XXXXXXXXXXXXXXXXXXXXXXXXXXXXXXXXXXXX

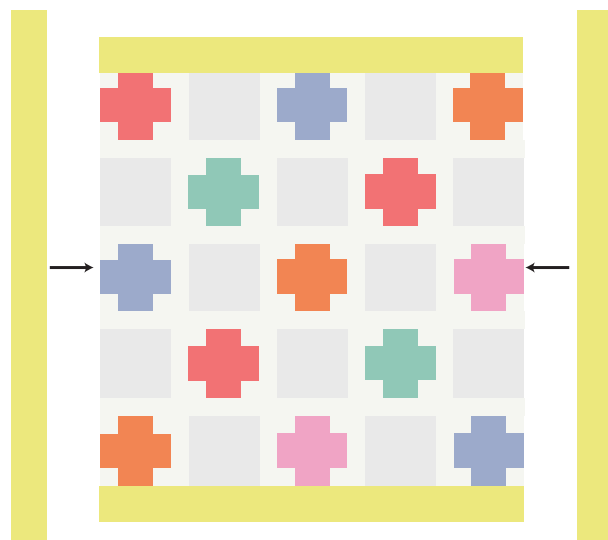


DIAGRAM 5

## QUILT ASSEMBLY

*Sew rights sides together.*

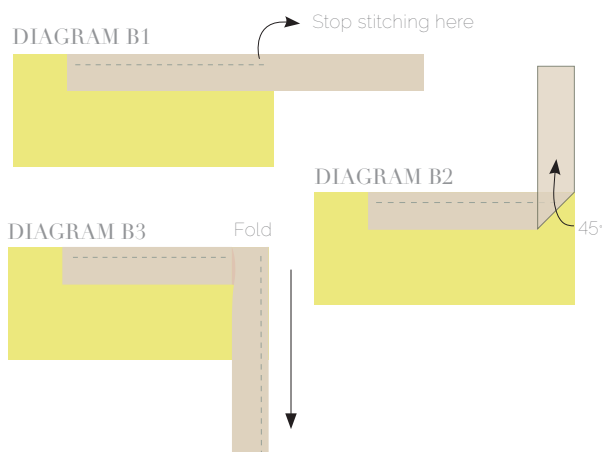
- Place BACKING FABRIC on a large surface wrong side up. Stretch it with masking tape against that surface.
- Place BATTING on top of backing fabric.
- Place TOP on top of the batting with right side facing up. Smooth away wrinkles using your hands.
- Pin all layers together and baste with basting thread, using long stitches. You can also use safety pins to join the layers.
- Machine or hand quilt starting at the center and working towards the corners. Remember that quilting motifs are a matter of personal preference. Have fun choosing yours!
- After you finished, trim excess of any fabric or batting, squaring the quilt to proceed to bind it.

## BINDING

*Sew rights sides together.*

- Cut enough strips  $1\frac{1}{2}$ ' wide by the width of the fabric **A** to make a final strip 350' long. Start sewing the binding strip in the middle of one of the sides of the quilt, placing the strip right side down and leaving an approximated 5' tail. Sew with  $\frac{1}{4}$ ' seam allowance (using straight stitch), aligning the strip's raw edge with the quilt top's raw edge.
- Stop stitching  $\frac{1}{4}$ ' before the edge of the quilt (**DIAGRAM B1**). Clip the threads. Remove the quilt from under the machine presser foot. Fold the strip in a motion of  $45^\circ$  and upward, pressing with your fingers (**DIAGRAM B2**). Hold this fold with your finger, bring the strip down in line with the next edge, making a horizontal fold that aligns with the top edge of the quilt (**DIAGRAM B3**). Start sewing at  $\frac{1}{4}$ ' of the border, stitching all the layers. Do the same in the four corners of the quilt.

- Stop stitching before you reach the last 5 or 6 inches. Cut the threads and remove the quilt from under the machine presser foot. Lay the loose ends of the binding flat along the quilt edge, folding the ends back on themselves where they meet. Press them together to form a crease. Using this crease as the stitching line, sew the two open ends of the binding with right sides together (you can help yourself marking with a pencil if the crease is difficult to see).
- Trim seam to  $\frac{1}{4}$ ' and press open. Complete the sewing. Turn binding to back of the quilt, turn raw edge inside and stitch by hand using blind stitch.



[artgalleryfabrics.com](http://artgalleryfabrics.com)

*NOTE: While all possible care has been taken to ensure the accuracy of this pattern, We are not responsible for printing errors or the way in which individual work varies. Please read instructions carefully before starting the construction of this quilt. If desired, wash and iron your fabrics before starting to cut.*

© 2016 Courtesy of Art Gallery Quilts LLC. All Rights Reserved.