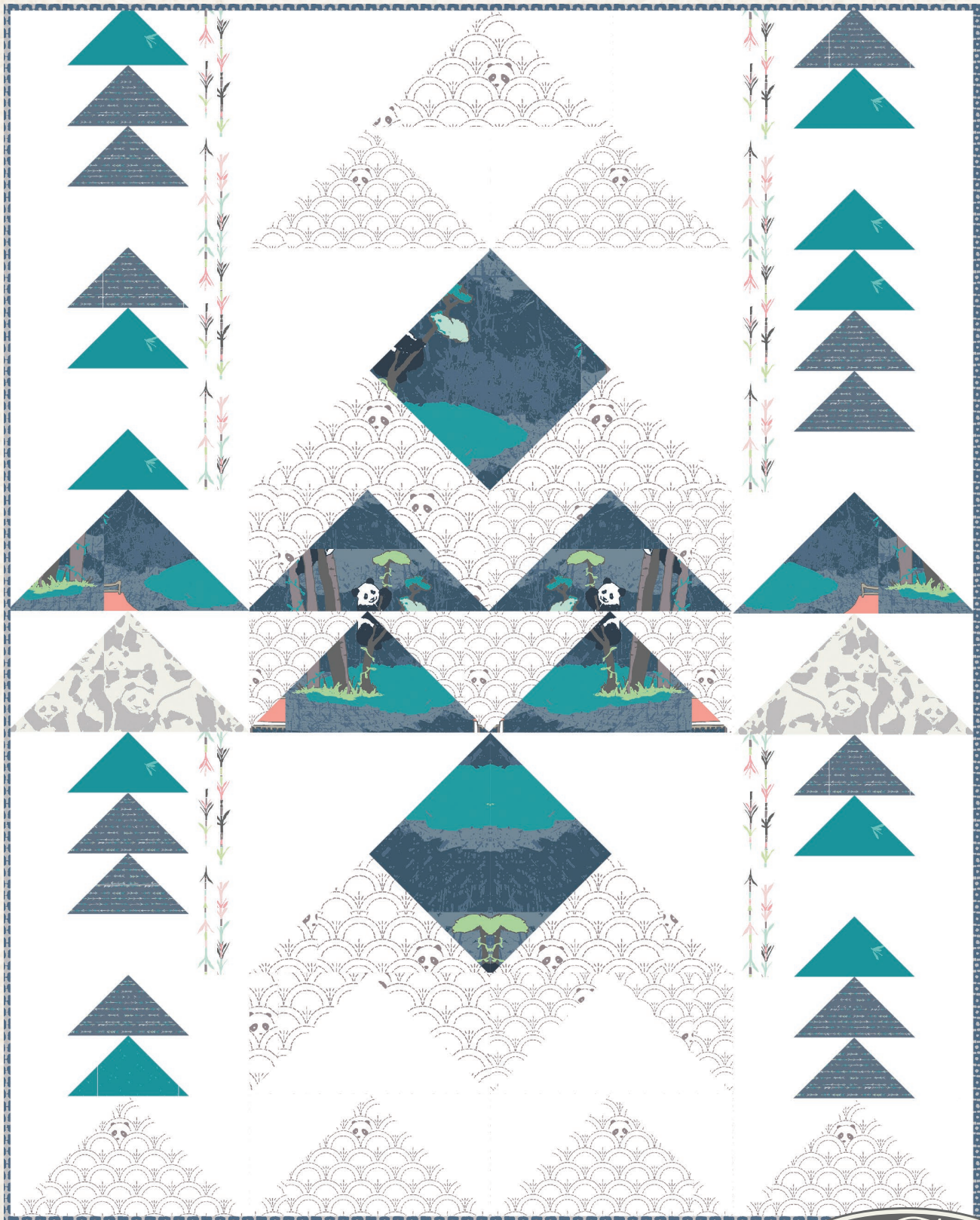


# FLYING PANDAS

DESIGNED BY AGF STUDIO





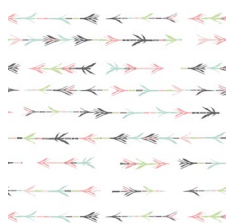
# FLYING PANDAS

QUILT DESIGNED BY AGF STUDIO

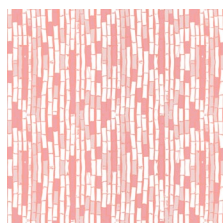


FABRICS DESIGNED BY KATARINA ROCCELLA

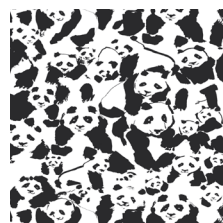
BAO BAO SWEET



PND-10120  
BAMBOO SHOOTS LIGHT



PND-10121  
ZHU NECTAR



PND-10122  
PANDALINGS POD ASSURED



PND-10123  
NI HAO FAIRIES YU



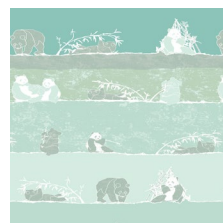
PND-10124  
YINGHUA CHERRYLIGHT



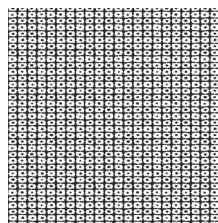
PND-10125  
HIDDEN PANDA COTTONBUD



PND-10126  
GANSU VILLAGE CLOUDWHITE



PND-10127  
PANDA SAYS YUM

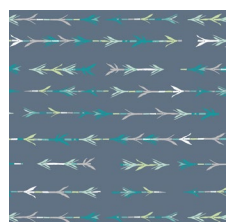


PND-10129  
PANDA PATCHES CONTRAST

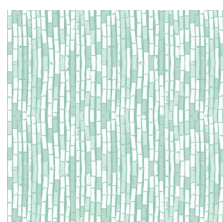


PND-10130  
PANDAGARDEN RECESS

TIAN TIAN BREEZE



PND-20120  
BAMBOO SHOOTS COOL



PND-20121  
ZHU MIST



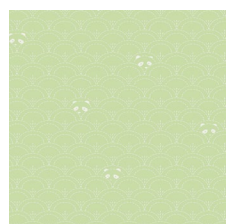
PND-20122  
PANDALINGS POD NIGHT



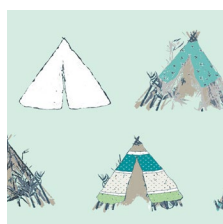
PND-20123  
NI HAO FAIRIES HU



PND-20124  
YINGHUA RAIN WATER



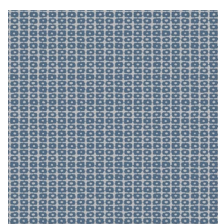
PND-20124  
HIDDEN PANDA LEAF



PND-20126  
GANSU VILLAGE MINTGLOW



PND-20128  
PANDALINGS POD SHADOW



PND-20129  
PANDA PATCHES BLUE



PND-20130  
PANDAGARDEN NAPTIME



FEEL THE DIFFERENCE © 2016 Courtesy of Art Gallery Quilts LLC. All Rights Reserved.

# FLYING PANDAS

FINISHED SIZE | 64" x 80"

## FABRIC REQUIREMENTS

Fabric <b>A</b>	PE-433	3 ½ yd.
Fabric <b>B</b>	PND-10120	½ yd.
Fabric <b>C</b>	PND-10125	2 yd.
Fabric <b>D</b>	PND-20130	1 ½ yd.
Fabric <b>E</b>	PND-20120	½ yd.
Fabric <b>F</b>	PND-20128	¼ yd.
Fabric <b>G</b>	PND-20123	⅓ yd.

### BACKING FABRIC

PND-10130 5 yds. *(Suggested)*

### BINDING FABRIC

PND-20129 (Fabric **H**) ½ yd.

## CUTTING DIRECTIONS

*¼" seam allowances are included.  
WOF means width of fabric.*

### Cut from Fabric **A**:

Forty-four (44) 4 ½" squares  
Ten (10) 4 ½ x 8 ½ rectangles  
Twenty-eight (28) 8 ½" squares  
Six (6) 4 ½ x 16 ½ rectangles  
Two (2) 8 ½ x 16 ½ rectangles  
Two (2) 16 ⅞" squares

### Cut from Fabric **B**:

Six (6) 4 ½ x 16 ½ rectangles

### Cut from Fabric **C**:

Twelve (12) 8 ½" squares  
Seven (7) 8 ½ x 16 ½ rectangles  
Four (4) Pattern Piece B (*Follow direction line*)

### Cut from Fabric **D**:

Six (6) 8 ½ x 16 ½ rectangles  
Two (2) Pattern Piece A (*Fussy Cut, follow line on pattern, ie. Cut as DIAMOND, not square*)

### Cut from Fabric **E**:

Twelve (12) 4 ½ x 8 ½ rectangles

### Cut from Fabric **F**:

Two (2) 8 ½ x 16 ½ rectangles

### Cut from Fabric **G**:

Ten (10) 4 ½ x 8 ½ rectangles

## CONSTRUCTION

*Sew all rights sides together with ¼" seam allowance.*

### Method for Making Flying Geese Units

This method for making flying geese preserves the direction of the fabric, which is very important for this design. Save the fabric cut off for future projects such as coordinating pillows.

This method uses a rectangle for the center, and two squares for the side triangles. The squares are about half the size of the rectangle. Make all flying geese in this method: (Diagram 1)

1. Mark the diagonals on the squares, each in a different direction.
2. Place square on left side of rectangle, lining up edges. Pin on line and flip up the fabric to check that the direction is correct. We don't want any upside down pandas.
3. Sew on the marked line.
4. Cut off the top triangle of excess fabric, as shown, at a ¼" from stitching.
5. Fold back and press.
6. Repeat steps 2 & 3 with remaining square, the square should overlap the sewn edge slightly.
7. Cut off excess.
8. Press your flying geese unit.

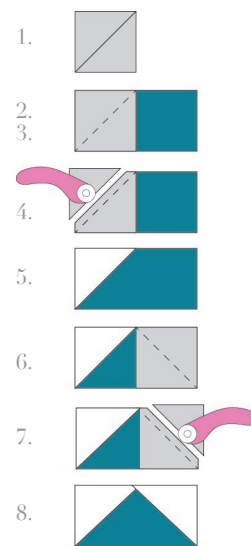


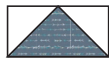
DIAGRAM 1

### Fabric A & G Flying Geese (x10)



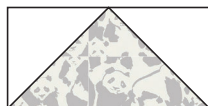
- Follow steps 1-8 to make ten (10) geese. Use: Ten (10)  $4\frac{1}{2} \times 8\frac{1}{2}$  rectangles (Fabric G) and Twenty (20)  $4\frac{1}{2}$ ' squares (Fabric A)

### Fabric A & E Flying Geese (x12)



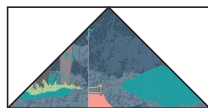
- Follow steps 1-8 to make twelve (12) geese. Use: Twelve (12)  $4\frac{1}{2} \times 8\frac{1}{2}$  rectangles (Fabric E) and Twenty-four (24)  $4\frac{1}{2}$ ' squares (Fabric A)

### Fabric A & F Flying Geese (x2)



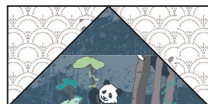
- Follow steps 1-8 to make two (2) geese. Use: Two (2)  $8\frac{1}{2} \times 16\frac{1}{2}$  rectangles (Fabric F) and Four (4)  $8\frac{1}{2}$ ' squares (Fabric A)

### Fabric A & D Flying Geese (x2)



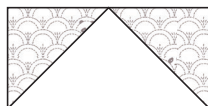
- Follow steps 1-8 to make two (2) geese. Use: Two (2)  $8\frac{1}{2} \times 16\frac{1}{2}$  rectangles (Fabric D) and Four (4)  $8\frac{1}{2}$ ' squares (Fabric A)

### Fabric C & D Flying Geese (x4)



- Follow steps 1-8 to make four (4) geese. Use: Four (4)  $8\frac{1}{2} \times 16\frac{1}{2}$  rectangles (Fabric D) and Eight (8)  $8\frac{1}{2}$ ' squares (Fabric C)

### Fabric C & A Flying Geese (x2)



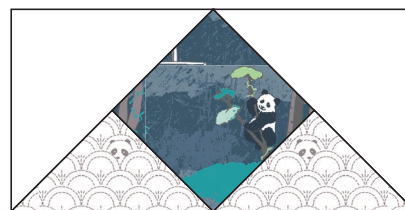
- Follow steps 1-8 to make two (2) geese. Use: Two (2)  $8\frac{1}{2} \times 16\frac{1}{2}$  rectangles (Fabric A) and Four (4)  $8\frac{1}{2}$ ' squares (Fabric C)

### Fabric A & C Flying Geese (x7)



- Follow steps 1-8 to make seven (7) geese. Use: Seven (7)  $8\frac{1}{2} \times 16\frac{1}{2}$  rectangles (Fabric C) and Fourteen (14)  $8\frac{1}{2}$ ' squares (Fabric A)

### Flying Geese Block from Pattern (x2)



- Pin Fabric C triangle (Pattern B) to the left bottom edge of Fabric D diamond (Pattern A). Match the top corner. There will be overhang on the bottom. Double-check that the pandas are in the right direction. Sew the bottom edge. Repeat for the other side. (Diagram 2)

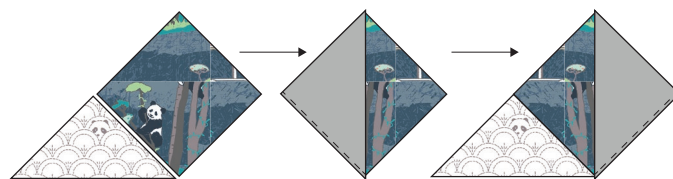


DIAGRAM 2

- Cut the (Fabric A)  $16\frac{1}{2}$ ' squares on the diagonal and match the diagonal edge to the side of the triangle piece above. Sew. Repeat on the other side. (Diagram 3)
- Make 2 of these units.

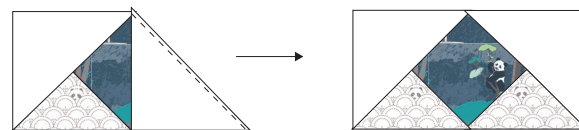
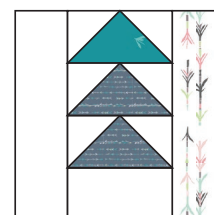


DIAGRAM 3

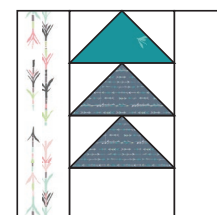
### Making Blocks

#### Block A & B

- Sew the following together (from top to bottom): Fabrics G/A sm. goose > Fabrics E/A sm. goose > Fabrics E/A sm. goose >  $4\frac{1}{2} \times 8\frac{1}{2}$  rectangle > Fabric A. Make three (3) sets.
- Sew  $4\frac{1}{2} \times 8\frac{1}{2}$  rectangles in Fabrics A & B on either side according to the diagram.



Two (2) Block A

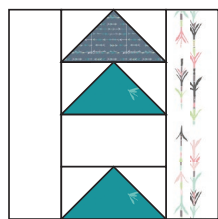


One (1) Block B  
DIAGRAM 4

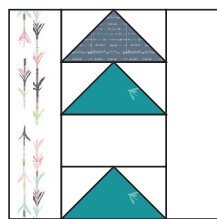


## Block C & D

- Sew the following together (from top to bottom):  
Fabrics E/A sm. goose > Fabrics G/A sm. goose >  
4 ½ x 8 ½ rectangle Fabric A > Fabrics G/A sm.  
goose. Make three (3) sets.
- Sew 4 ½ x 8 ½ rectangles in Fabrics A & B on  
either side according to the diagram.



One (1) Block C



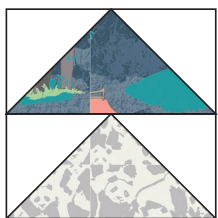
Two (2) Block D  
DIAGRAM 5

## Block E

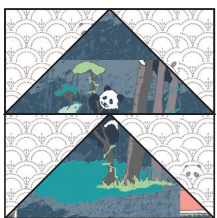
- Sew the following together (from top to bottom):  
Fabrics D/A lg. goose > Fabrics F/A lg. goose  
(Make two)

## Block F

- Sew the following together (from top to bottom):  
Fabrics D/C lg. goose > Fabrics D/A lg. goose  
(Make two)



Two (2) Block E



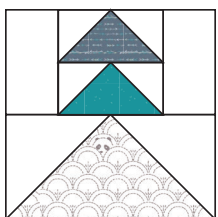
Two (2) Block F  
DIAGRAM 6

## Block G

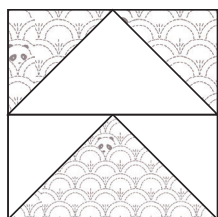
- Sew the following together (from top to bottom):  
Fabrics E/A sm. goose > Fabrics G/A sm.  
goose. Sew (fabric A) 4 ½ x 8 ½ rectangles  
on either side of the geese piece. Then sew  
above of Fabric C/A lg. goose. (see diagram 7)  
(Make one)

## Block H

- Sew the following together (from top to bottom):  
Fabrics A/C lg. goose > Fabrics C/A lg. goose.  
(see diagram 7)  
(Make two)



One (1) Block G



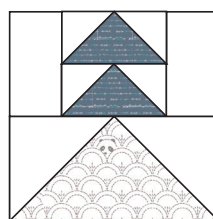
Two (2) Block H  
DIAGRAM 7

## Block I

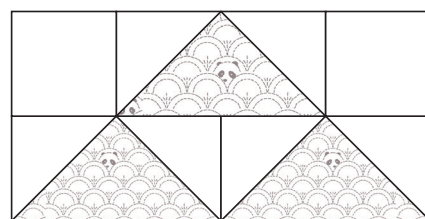
- Sew the following together (from top to bottom):  
Fabrics E/A sm. goose > Fabrics E/A sm. goose.  
Sew (fabric A) 4 ½ x 8 ½ rectangles on either side  
of the geese piece. Then sew above of Fabric  
C/A lg. goose (see diagram 8)  
(Make one)

## Center Top Block

- Row 1: 8 ½" square (Fabric A) > Fabric C/A lg.  
goose > 8 ½" square (Fabric A)
- Row 2: Fabric C/A lg. goose > Fabric C/A lg.  
goose
- Sew row one above row two.  
(see diagram 8)  
(Make one)



One (1) Block I



One (1) Center Top Block  
DIAGRAM 8

## ASSEMBLING THE TOP

*Sew all rights sides together with  
¼" seam allowance. Press open.*

### Row 1

- Sew Block A > Center Top Block > Block D

### Row 2

- Sew Block C > Pattern Block > Block B

### Row 3

- Sew Block E > Block F > Block F > Block E

### Row 4

- Sew Block A > Pattern Block > Block D

### Row 5

- Sew Block G > Block H > Block H > Block I

- Sew Row 1 > 2 > 3 > 4 > 5

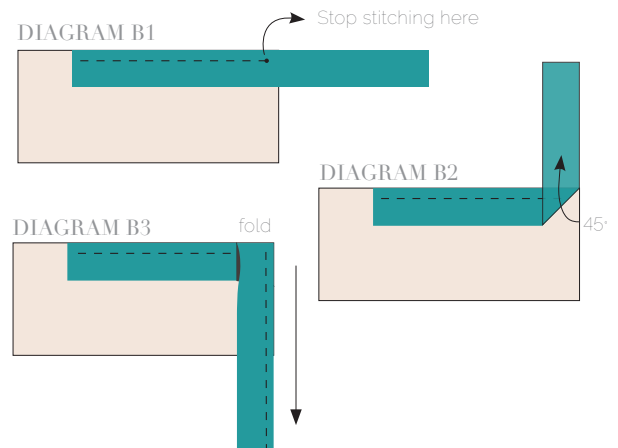
Refer to the cover illustration for assembly.

## QUILT ASSEMBLY

*Sew rights sides together.*

- Take 5 yds of the suggested backing fabric and cut in half to obtain two (2) equal 90" long units.
- Sew them right sides together on the longer edge.
- Place BACKING FABRIC on a large surface wrong side up. Stretch it with masking tape against that surface. Make sure the print is in the correct orientation.
- Place BATTING on top of backing fabric.
- Place TOP on top of the batting with right side facing up. Smooth away wrinkles using your hands.
- Pin all layers together and baste with basting thread, using long stitches. You can also use safety pins to join the layers.
- Machine or hand quilt starting at the center and working towards the corners. Remember that quilting motifs are a matter of personal preference. Have fun choosing yours!
- After you finished, trim excess of any fabric or batting, squaring the quilt to proceed to bind it.

- Stop stitching before you reach the last 5 or 6 inches. Cut the threads and remove the quilt from under the machine presser foot. Lay the loose ends of the binding flat along the quilt edge, folding the ends back on themselves where they meet. Press them together to form a crease. Using this crease as the stitching line, sew the two open ends of the binding with right sides together (you can help yourself marking with a pencil if the crease is difficult to see).
- Trim seam to  $\frac{1}{4}$ " and press open. Complete the sewing. Turn binding to back of the quilt, and stitch by hand using blind stitch.



## BINDING

*Sew rights sides together.*

- I suggest doing the Double Fold Binding, which has double thickness.
- Cut enough (8) strips 2  $\frac{1}{4}$ " wide by the width of the fabric **H** to make a final strip 298" long. Fold and press the long binding strip in half widthwise (on the shorter side), wrong sides together.
- Start sewing the binding strip in the middle of one of the sides of the quilt, placing the strip right side down and leaving an approximated 5" tail. Sew with  $\frac{1}{4}$ " seam allowance (using straight stitch), aligning the strip's raw edge with the quilt top's raw edge.
- Stop stitching  $\frac{1}{4}$ " before the edge of the quilt (**DIAGRAM B 1**). Clip the threads. Remove the quilt from under the machine presser foot. Fold the strip in a motion of 45° and upward, pressing with your fingers (**DIAGRAM B2**). Hold this fold with your finger, bring the strip down in line with the next edge, making a horizontal fold that aligns with the top edge of the quilt (**DIAGRAM B3**). Start sewing at  $\frac{1}{4}$ " of the border, stitching all the layers. Do the same in the four corners of the quilt.



[artgalleryfabrics.com](http://artgalleryfabrics.com)

*NOTE: While all possible care has been taken to ensure the accuracy of this pattern, We are not responsible for printing errors or the way in which individual work varies. Please read instructions carefully before starting the construction of this quilt. If desired, wash and iron your fabrics before starting to cut.*

© 2016 Courtesy of Art Gallery Quilts LLC. All Rights Reserved.





1/4" Seam Allowance included  
Cut 2



# 3

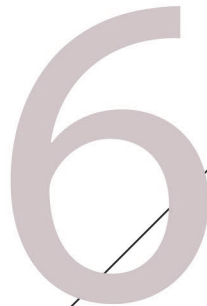
A vertical double-headed arrow, consisting of a long vertical line with triangular arrowheads at both the top and bottom ends.



5

[illegible]





[illegible]

7

1. ☐ [Home](#)  
 2. ☐ [About Us](#)  
 3. ☐ [Services](#)  
 4. ☐ [Contact Us](#)  
 5. ☐ [Privacy Policy](#)  
 6. ☐ [Terms of Service](#)  
 7. ☐ [FAQ](#)  
 8. ☐ [Blog](#)