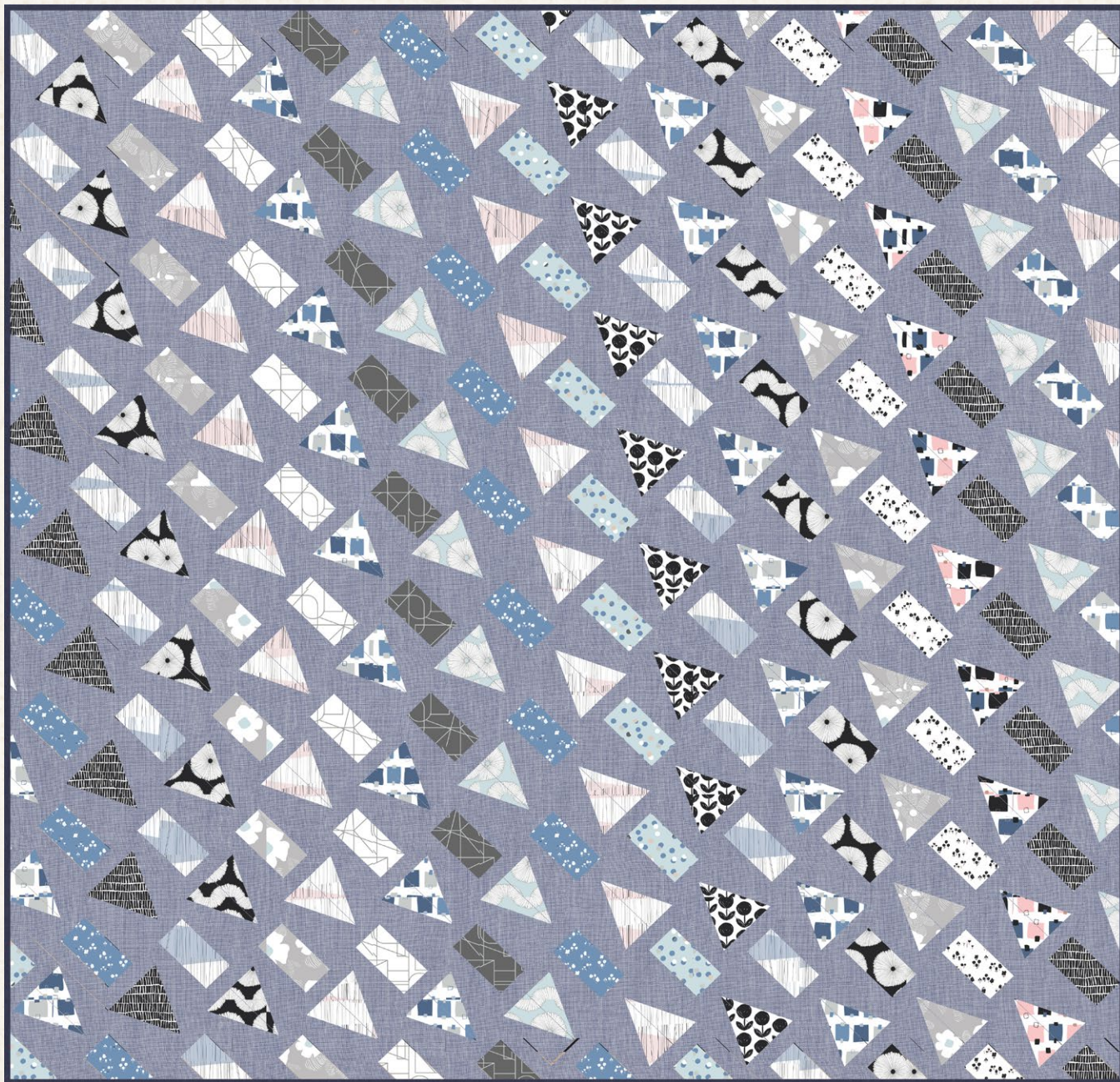


XXXXXX

XXXXXX



XXXXXXXXXXXXXXXXXXXX





# Rectilinear AGFstudio

QUILT DESIGNED BY AGF STUDIO



FABRICS DESIGNED BY AGF STUDIO

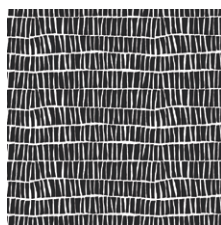


FINISHED SIZE | 65" x 65"

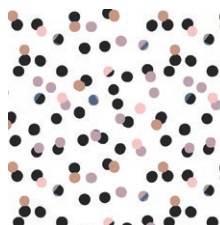
FOND



LAM-44280  
ASPHODEL DEPTH



LAM-44281  
PILED EBON



LAM-44282  
CHADS JAMBOREE



LAM-44283  
BUOYANCY OPPOSED



LAM-44284  
SCATTERED SLOE



LAM-44285  
REALIGNED BLUSHED



LAM-44286  
ETERN SOOT



LAM-44287  
COLLIDE PURITY



LAM-44288  
ATTACHED CONTRAST

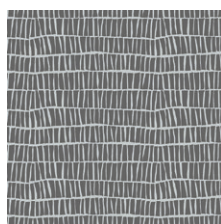


LAM-44289  
VANTAGE PANEL

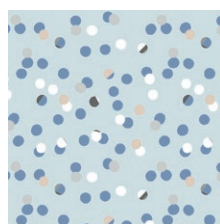
STILL



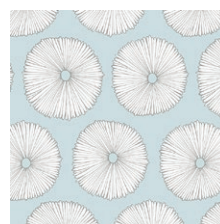
LAM-54280  
ASPHODEL TRACE



LAM-54281  
PILED SHADOW



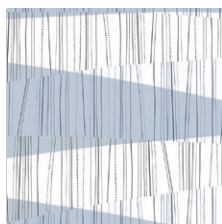
LAM-54282  
CHADS RETREAT



LAM-54283  
BOUYANCY WAN



LAM-54284  
SCATTERED SKYWAY



LAM-54285  
REALIGNED POWDERED



LAM-54286  
ETERN STONE



LAM-54287  
COLLIDE CINDER



LAM-54288  
ATTACHED CYANIC



LAM-54290  
STICK FOREST OUTLINED



DEN-S-2004  
INFUSED HYDRANGAEA



DEN-S-2008  
CLASSIC DENIM

## FABRIC REQUIREMENTS

Fabric A	LAM-54282	¼ yd.
Fabric B	LAM-54288	⅝ yd.
Fabric C	LAM-54284	¼ yd.
Fabric D	LAM-54282	½ yd.
Fabric E	LAM-54285	⅓ yd.
Fabric F	LAM-44283	½ yd.
Fabric G	LAM-54280	½ yd.
Fabric H	LAM-44285	½ yd.
Fabric I	LAM-44287	¼ yd.
Fabric J	LAM-54287	¼ yd.
Fabric K	LAM-54283	⅔ yd.
Fabric L	LAM-44286	¼ yd.
Fabric M	LAM-44284	¼ yd.
Fabric N	LAM-44288	¼ yd.
Fabric O	DEN-S-2004	3 ⅙ yd.

### BACKING FABRIC

LAM-44282- 4 ⅓ yds. *(Suggested)*

### BINDING FABRIC

DEN-S-2008- ⅔ yd.

## CUTTING DIRECTIONS

*¼" seam allowances are included.  
WOF means width of fabric.*

### 2 1½" x 4 1½" rectangles:

- Fabric A- (13) Thirteen
- Fabric B- (9) Nine
- Fabric C (17) Seventeen
- Fabric D- (10) Ten
- Fabric E- (20) Twenty
- Fabric F- (12) Twelve
- Fabric G- (10) Ten
- Fabric I- (15) Fifteen
- Fabric j- (10) Ten
- Fabric M- (10) Ten

### For Half Triangle Rectangles:

### 2 7⁄8" x 4 7⁄8" rectangles:

- Half of each 2 7⁄8" x 4 7⁄8" rectangle should be cut on the right diagonal and the other half on the left diagonal. (Diagram 1)

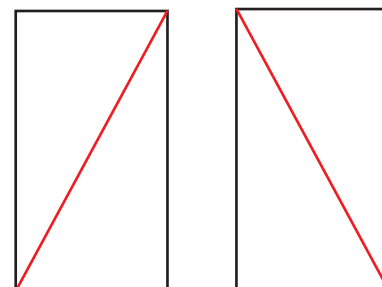


DIAGRAM 1

- Fabric B- (28) Twenty Eight
- Fabric D- (10) Ten
- Fabric F- (10) Ten
- Fabric G- (10) Ten
- Fabric H- (32) Thirty Two
- Fabric K- (22) Twenty Two
- Fabric L- (12) Twelve
- Fabric N- (10) Ten
- Fabric O -(132) One Hundred Thirty Two
- Two Hundred Forty Eight (248) 1 ½" x 4 ½" strips from Fabric O

## CONSTRUCTION

*Sew all rights sides together with ¼" seam allowance.*

- Sew triangles together to create the following half triangle rectangles shown in Diagram 2.
- Sew half triangle rectangle units together to get the following blocks shown in Diagram 3.
- Next sew a 1 ½" x 4 ½" strip from Fabric O to the top and bottom of your blocks. (Diagram 4)



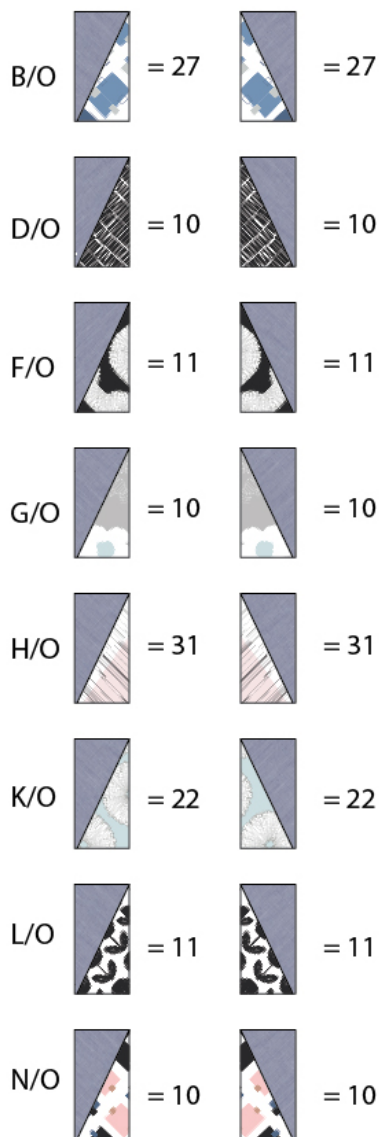


DIAGRAM 2

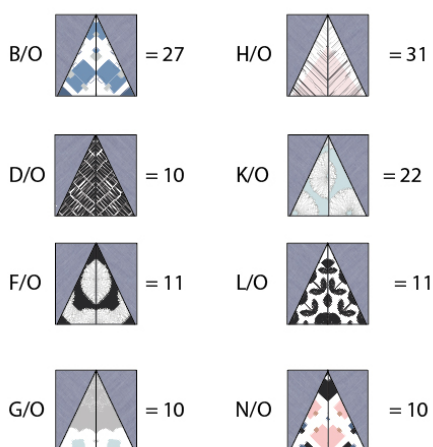


DIAGRAM 3

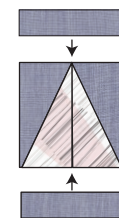


DIAGRAM 4

- Following your cover page as a guide sew a 1 1/2' x 4 1/2' strip from Fabric **O** to each side of a 2 1/2' x 4 1/2' strip from Fabric **A,B,C,D,E,F,G,I,J,M**. (Diagram 5)

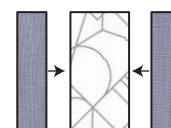


DIAGRAM 5

## ASSEMBLING THE TOP

*Sew all rights sides together with 1/4" seam allowance. Press open.*

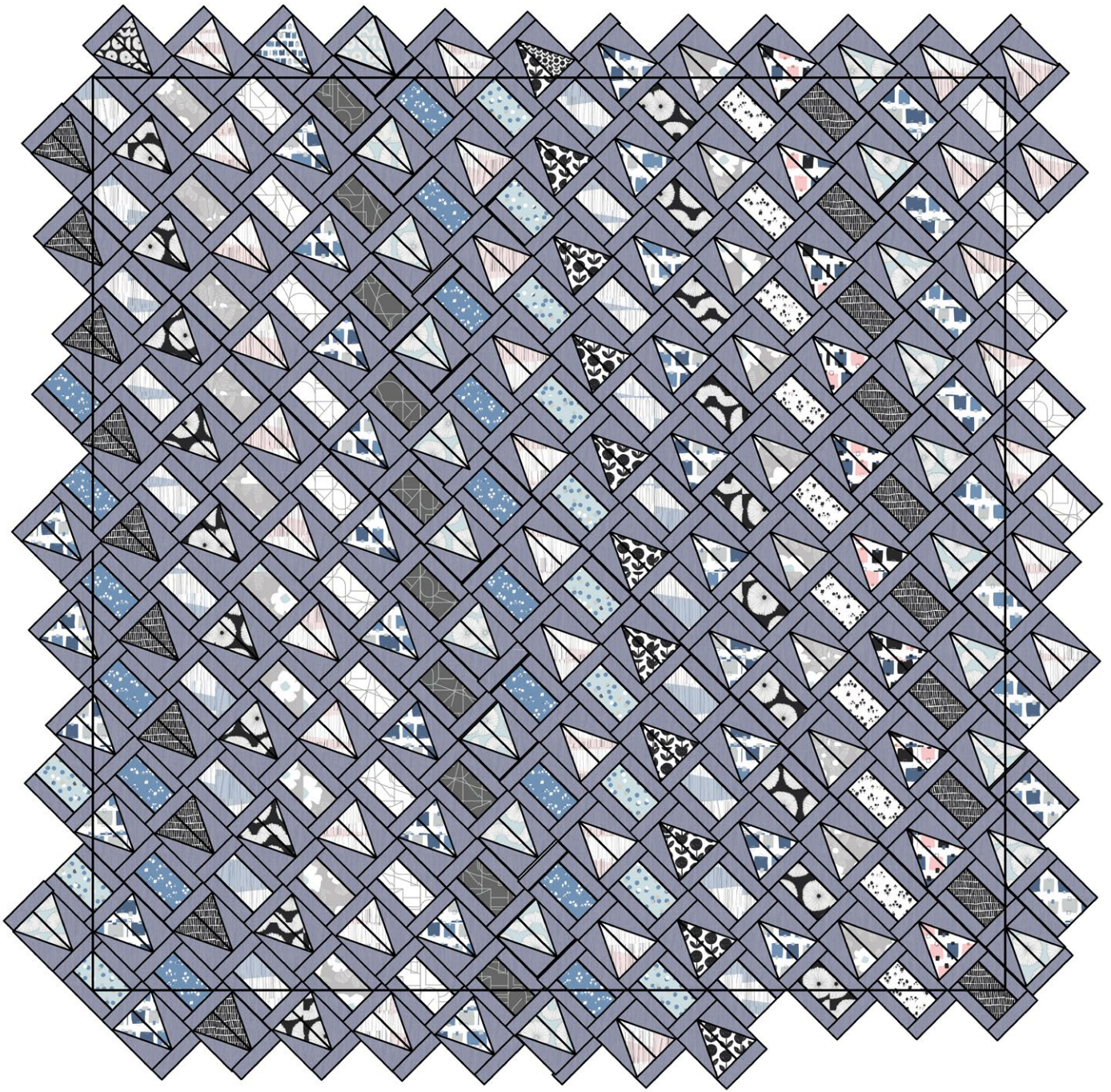
- Follow the quilt illustration as a reference, sew into rows alternating blocks.
- Once you have all your rows sewn, sew rows together.
- Square off quilt to be 65' x 65'.

## QUILT ASSEMBLY

*Sew rights sides together.*

- Place BACKING FABRIC on a large surface wrong side up. Stretch it with masking tape against that surface.
- Place BATTING on top of backing fabric.
- Place TOP on top of the batting with right side facing up. Smooth away wrinkles using your hands.
- Pin all layers together and baste with basting thread, using long stitches. You can also use safety pins to join the layers.
- Machine or hand quilt starting at the center and working towards the corners. Remember that quilting motifs are a matter of personal preference. Have fun choosing yours!
- After you finished, trim excess of any fabric or batting, squaring the quilt to proceed to bind it.





artgalleryfabrics.com



*Sew rights sides together.*

- Cut enough strips  $1\frac{1}{2}$ ' wide by the width of the fabric **DEN-S-2008** to make a final strip 270' long. Start sewing the binding strip in the middle of one of the sides of the quilt, placing the strip right side down and leaving an approximated 5' tail. Sew with  $\frac{1}{4}$ ' seam allowance (using straight stitch), aligning the strip's raw edge with the quilt top's raw edge.
- Stop stitching  $\frac{1}{4}$ ' before the edge of the quilt (**DIAGRAM B 1**). Clip the threads. Remove the quilt from under the machine presser foot. Fold the strip in a motion of  $45^\circ$  and upward, pressing with your fingers (**DIAGRAM B2**). Hold this fold with your finger, bring the strip down in line with the next edge, making a horizontal fold that aligns with the top edge of the quilt (**DIAGRAM B3**). Start sewing at  $\frac{1}{4}$ ' of the border, stitching all the layers. Do the same in the four corners of the quilt.
- Stop stitching before you reach the last 5 or 6 inches. Cut the threads and remove the quilt from under the machine presser foot. Lay the loose ends of the binding flat along the quilt edge, folding the ends back on themselves where they meet. Press them together to form a crease. Using this crease as the stitching line, sew the two open ends of the binding with right sides together (you can help yourself marking with a pencil if the crease is difficult to see).
- Trim seam to  $\frac{1}{4}$ ' and press open. Complete the sewing. Turn binding to back of the quilt, turn raw edge inside and stitch by hand using blind stitch.

DIAGRAM B1

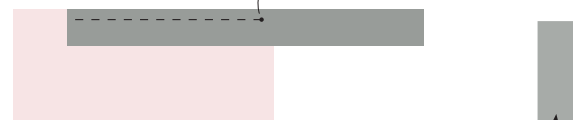
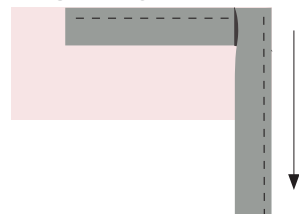


DIAGRAM B2



DIAGRAM B3



Congratulations  
& enjoy



[artgalleryfabrics.com](http://artgalleryfabrics.com)

*NOTE: While all possible care has been taken to ensure the accuracy of this pattern, We are not responsible for printing errors or the way in which individual work varies. Please read instructions carefully before starting the construction of this quilt. If desired, wash and iron your fabrics before starting to cut.*

© 2016 Courtesy of Art Gallery Quilts LLC. All Rights Reserved.