

# IN and Out





# IN and Out *AGFstudio*

ORGANIZER DESIGNED BY AGF STUDIO

FINISHED SIZE | 12' x 12'

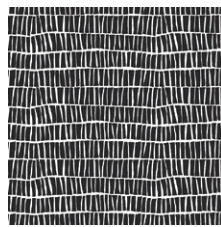


FABRICS DESIGNED BY AGF STUDIO

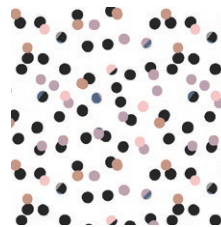
FOND



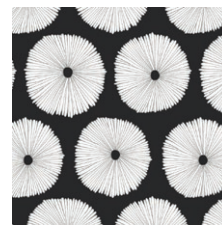
LAM-44280  
ASPHODEL DEPTH



LAM-44281  
PILED EBON



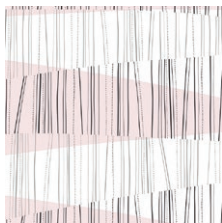
LAM-44282  
CHADS JAMBOREE



LAM-44283  
BUOYANCY OPPOSED



LAM-44284  
SCATTERED SLOE



LAM-44285  
REALIGNED BLUSHED



LAM-44286  
ETERN SOOT



LAM-44287  
COLLIDE PURITY



LAM-44288  
ATTACHED CONTRAST

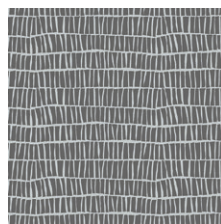


LAM-44289  
VANTAGE PANEL

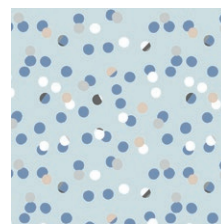
STILL



LAM-54280  
ASPHODEL TRACE



LAM-54281  
PILED SHADOW



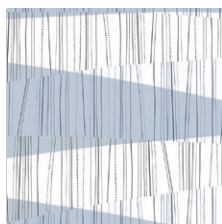
LAM-54282  
CHADS RETREAT



LAM-54283  
BOUYANCY WAN



LAM-54284  
SCATTERED SKYWAY



LAM-54285  
REALIGNED POWDERED



LAM-54286  
ETERN STONE



LAM-54287  
COLLIDE CINDER



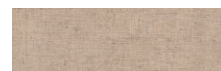
LAM-54288  
ATTACHED CYANIC



LAM-54290  
STICK FOREST OUTLINED



FEEL THE DIFFERENCE © 2016 Courtesy of Art Gallery Quilts LLC. All Rights Reserved.



DEN-L-4000  
SOFT SAND



PE-420  
CRYSTAL PINK

## FABRIC REQUIREMENTS

Fabric <b>A</b>	LAM-44285-	2 Fat Qt.
Fabric <b>B</b>	LAM-44282-	1 Fat Qt.
Fabric <b>C</b>	LAM-44280-	1 Fat 8
Fabric <b>D</b>	LAM-44287-	1 Fat 8
Fabric <b>E</b>	DEN-L-4000-	½ yd.
Fabric <b>F</b>	PE-420-	1 Fat 8

## CUTTING DIRECTIONS

*¼" seam allowances are included.*

*WOF means width of fabric.*

*Note: Denim Studio Fabric is wider than our quilting cottons ranging from 56" - 59".*

- Two (2) 12 1/2" squares from Fabric A
- One (1) 12 1/2" square woven interfacing and fusible fleece
- One (1) 9" x 12 1/2" strip from Fabric B
- One (1) 7" x 12 1/2" strip from Fabric C
- One (1) 5" x 12 1/2" strip from Fabric D
- One (1) 10" x 12 1/2" strip from Fabric E
- One (1) 8" x 12 1/2" strip from Fabric E
- One (1) 6" x 12 1/2" strip from Fabric E
- One (1) 3" x 7" strips from Fabric E
- One (1) 1 1/2" x WOF strip from Fabric E (binding)  
(56" long)
- Four (4) 2" x 4 1/2" strips from Fabric F
- Two (2) 2" x 4 1/2" strips from woven interfacing

## CONSTRUCTION

*Sew all rights sides together with ½" seam allowance unless noted otherwise.*

### Sewing the Pockets

- Sew the following pieces right sides together:
  - 5" x 12 1/2" strip from Fabric **D** to a 6" x 12 1/2" strip from Fabric **E**.
  - 7" x 12 1/2" strip from Fabric **C** to a 8" x 12 1/2" strip from Fabric **E**.
  - 9" x 12 1/2" strip from Fabric **B** to a 10" x 12 1/2" strip from Fabric **E**.

XX

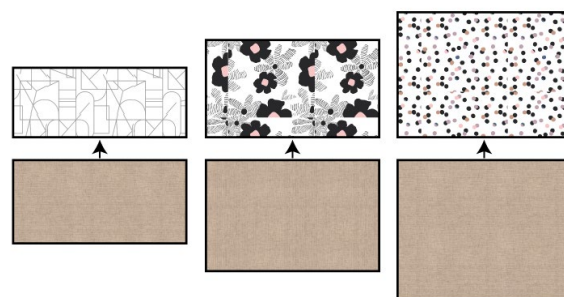


DIAGRAM 1

- Fold over piece so wrong sides are touching and raw edges meet. Press into place to create your faux binding and topstitch seam close to the edge. (Diagram 2)



DIAGRAM 2

### Creating the Strap

- Take a 3" x 7" strip from Fabric **E** and fold raw edges into the middle of your strip and press.
- Next fold strip in half and press. Topstitch straps on both sides as close to the edge as possible. (Diagram 3)

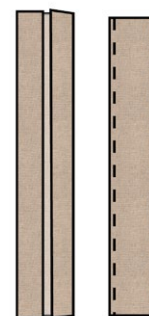


DIAGRAM 3

### Creating the Labels

- Program the words or decorative stitches you would like on each of your labels. One row of pockets will be for my outgoing mail and the other my incoming mail. So those are the words I will program into my sewing machine.
- Fuse a 2" x 4 1/2" interfacing to two of your strips from Fabric **F**. Place one strip without interfacing and one with right sides together and stitch all the way around piece leaving a small unsewn portion to flip right side of piece through.



## BINDING

*Sew rights sides together.*

- Tuck under unsewn portions and stitch all the way around your piece as close to the edge as possible.
- On a scrap piece of fabric test the words or decorative stitches you are stitching on your labels.
- Stitch onto label. Take your pocket made with Fabric D and center labels on each side of the middle of your pocket and stitch all the way around label to secure to pocket. (Diagram 4)

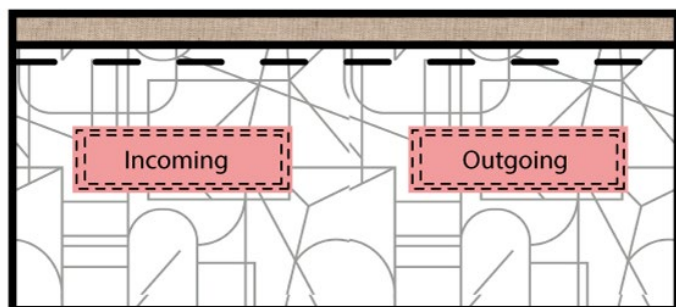


DIAGRAM 4

### Assembling the Mail Carrier

- Fuse woven interfacing to a 12 1/2" square from Fabric A. Next fuse a piece of fusible fleece.
- Place pockets one on top of each other the biggest to smallest. (Diagram 5)
- Pin in place and stitch a triple stitch down the center of your pockets.
- Place strap ends on either side of your center line and stitch at 1/4".

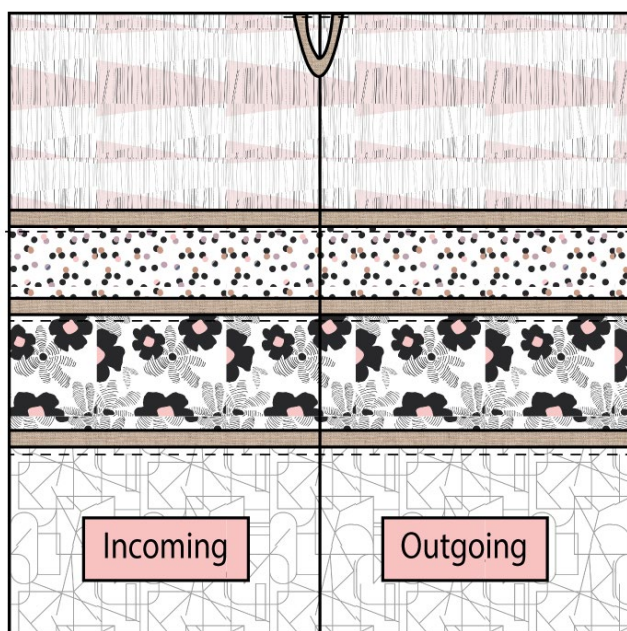
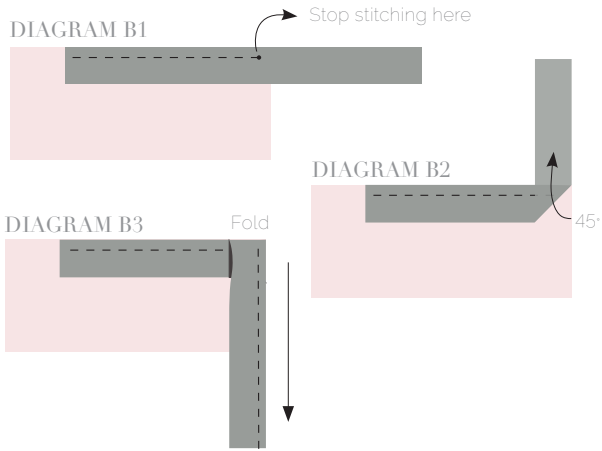


DIAGRAM 5

- Cut enough strips 1 1/2" wide by the width of fabric E to make a final strip 56" long. Start sewing the binding strip in the middle of one of the sides of the mail carrier, placing the strip right side down and leaving an approximated 5" tail. Sew with 1/4" seam allowance (using straight stitch), aligning the strip's raw edge with the mail carrier raw edge.
- Stop stitching 1/4" before the edge of the carrier (DIAGRAM B 1). Clip the threads. Remove from under the machine presser foot. Fold the strip in a motion of 45° and upward, pressing with your fingers (DIAGRAM B2). Hold this fold with your finger, bring the strip down in line with the next edge, making a horizontal fold that aligns with the top edge of the carrier (DIAGRAM B3). Start sewing at 1/4" of the border, stitching all the layers. Do the same in the four corners.
- Stop stitching before you reach the last 5 or 6 inches. Cut the threads and remove from under the machine presser foot. Lay the loose ends of the binding flat along the quilt edge, folding the ends back on themselves where they meet. Press them together to form a crease. Using this crease as the stitching line, sew the two open ends of the binding with right sides together (you can help yourself marking with a pencil if the crease is difficult to see).
- Trim seam to 1/4" and press open. Complete the sewing. Turn binding to back of the carrier, turn raw edge inside and stitch by hand using blind stitch.
- Once your binding is complete place strap facing up and stitch on each end of strap to make strap stay in the up position.



XXXXXXXXXXXXXXXXXXXXXXXXXXXXXXXXXXXX

*Congratulations  
& enjoy*

XXXXXXXXXXXXXXXXXXXXXXXXXXXXXXXXXXXX



[artgalleryfabrics.com](http://artgalleryfabrics.com)

*NOTE: While all possible care has been taken to ensure the accuracy of this pattern, We are not responsible for printing errors or the way in which individual work varies. Please read instructions carefully before starting the construction of this quilt. If desired, wash and iron your fabrics before starting to cut.*

© 2016 Courtesy of Art Gallery Quilts LLC. All Rights Reserved.