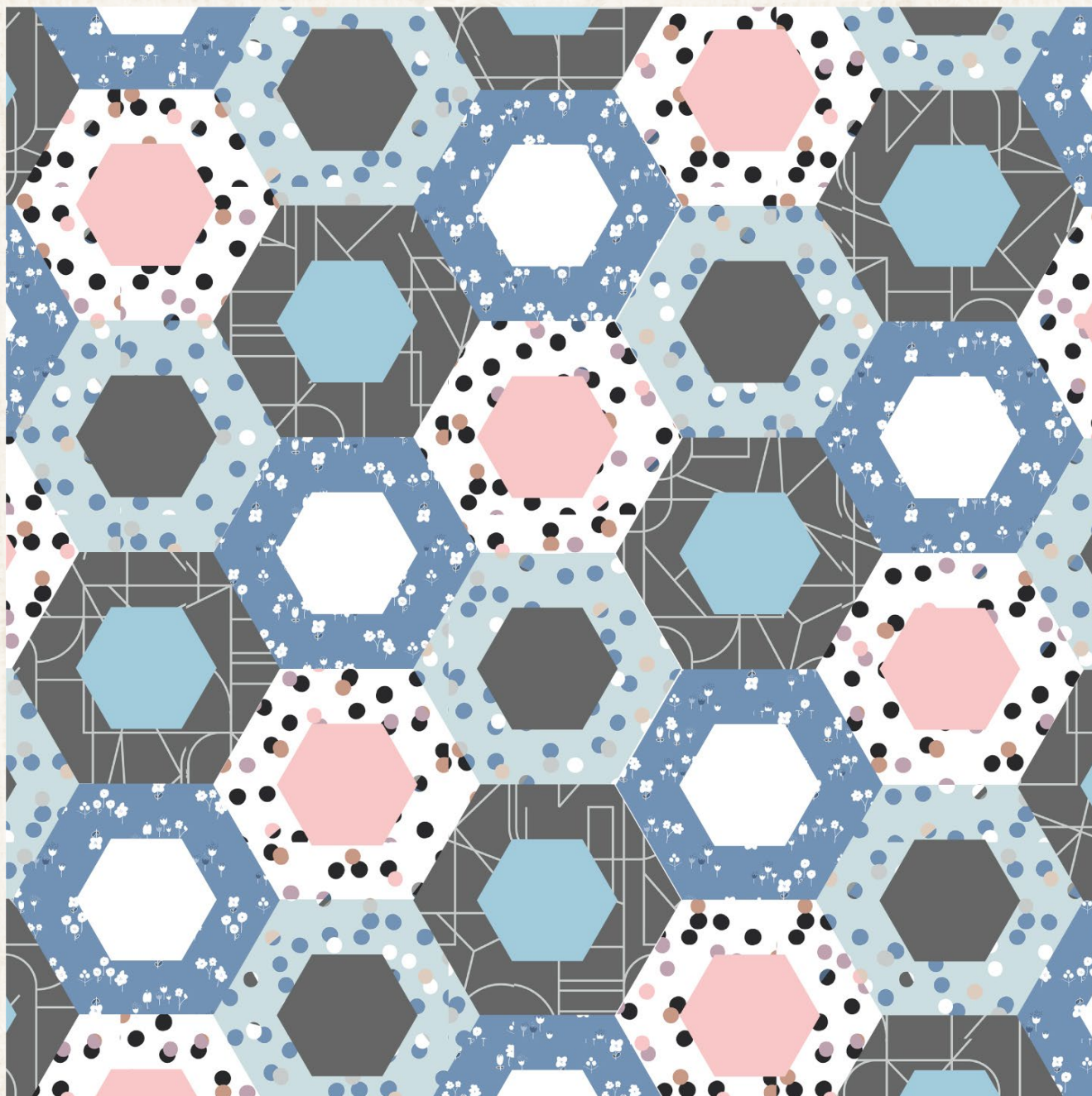


X  
X  
X  
X  
X  
X  
X  
X  
X  
X  
X  
X  
X





# Hued AGFstudio

PILLOW DESIGNED BY AGF STUDIO



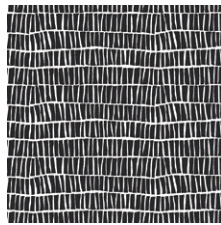
FINISHED SIZE | 20" x 20"

FABRICS DESIGNED BY AGF STUDIO

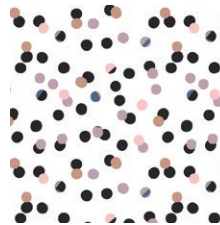
FOND



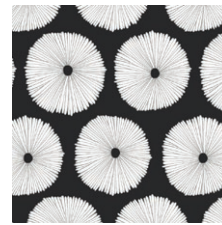
LAM-44280  
ASPHODEL DEPTH



LAM-44281  
PILED EBON



LAM-44282  
CHADS JAMBOREE



LAM-44283  
BOUYANCY OPPOSED



LAM-44284  
SCATTERED SLOE



LAM-44285  
REALIGNED BLUSHED



LAM-44286  
ETERN SOOT



LAM-44287  
COLLIDE PURITY



LAM-44288  
ATTACHED CONTRAST

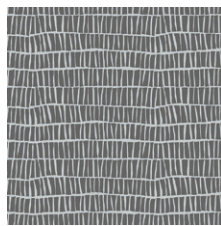


LAM-44289  
VANTAGE PANEL

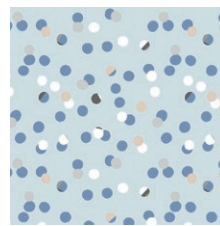
STILL



LAM-54280  
ASPHODEL TRACE



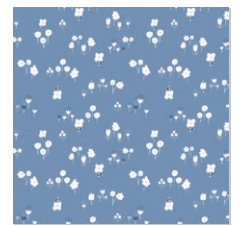
LAM-54281  
PILED SHADOW



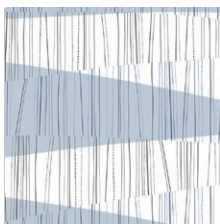
LAM-54282  
CHADS RETREAT



LAM-54283  
BOUYANCY WAN



LAM-54284  
SCATTERED SKYWAY



LAM-54285  
REALIGNED POWDERED



LAM-54286  
ETERN STONE



LAM-54287  
COLLIDE CINDER



LAM-54288  
ATTACHED CYANIC



LAM-54290  
STICK FOREST OUTLINED



PE-434  
TRANQUIL WATERS



PE-430  
MOONSTONE



PE-420  
CRYSTAL PINK



PE-433  
SNOW



FEEL THE DIFFERENCE

© 2016 Courtesy of Art Gallery Quilts LLC. All Rights Reserved.

## Y-Seam Hexagon

### CONSTRUCTION

*Sew all rights sides together with  $\frac{1}{4}$ " seam allowance. Press seams open.*

- Sew your large hexagons into rows. Starting and stopping  $\frac{1}{4}$ " on each end. It's very important you don't sew all the way to the end! Backstitch at the start and the end. (Diagram 1)

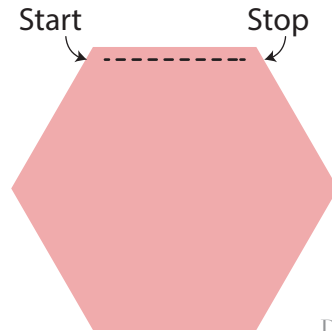


DIAGRAM 1

- Sew hexagons into rows. Press seams open. (Diagram 2)
- Row 1: A-B-C-D-A
- Row 2: B-C-D-A-B-C
- Row 3: D-A-B-C-D
- Row 4: A-B-C-D-A-B
- Row 5: C-D-A-B-C
- Row 6: D-A-B-C-D-A
- Row 7: B-C-D-A-B

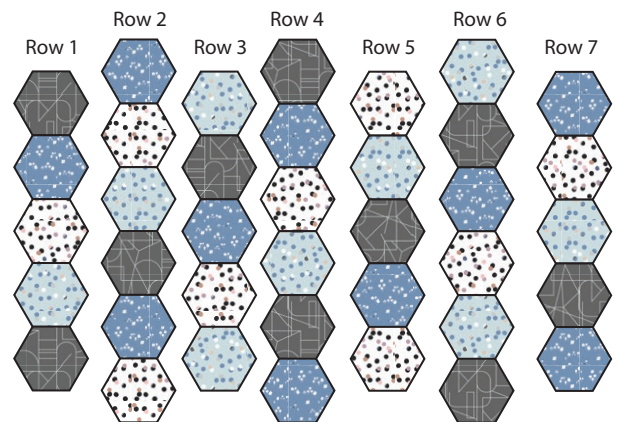


DIAGRAM 2

### FABRIC REQUIREMENTS

Fabric A	LAM-54287	1 FQ.
Fabric B	LAM-54284	1 FQ.
Fabric C	LAM-44282	1 FQ.
Fabric D	LAM-54282	1 FQ.
Fabric E	PE-434	1 F8.
Fabric F	PE-430	1 F8.
Fabric G	PE-420	1 F8.
Fabric H	PE-433	$\frac{7}{8}$ yd.

### CUTTING DIRECTIONS

*Read through all instructions before beginning  $\frac{1}{4}$ " seam allowances are included. WOF means width of fabric.*

#### 3 $\frac{1}{4}$ " squares for small hexagons:

- Nine (9) from Fabric G and F
- Ten (10) from Fabric E and H

#### Large Hexagons:

- Ten (10) from Fabric A and B
- Nine (9) from Fabric C and D
- Backing- 13' x 21' rectangles from Fabric H



- Start sewing your rows together by laying your first two rows right sides together lining up your first two hexagons.
- Meet the raw edges and sew 1/4" in and stop 1/4" before the end of your hexagon edge. (Diagram 3)

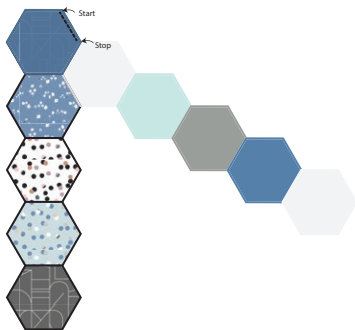


DIAGRAM 3

- When you flip your piece open it should like Diagram 4.
- To sew your next seam fold top hexagon from Fabric A so you will be able to line up your seams easily because you left 1/4" gaps.
- Continue sewing each hexagon using this method to attach all your rows.

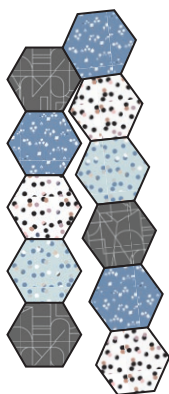


DIAGRAM 4

## English Paper Piecing Hexagons CONSTRUCTION

- Cut out 38 small hexagons templates on card-stock paper. Take your 3 1/4" squares and place your hexagon template in the center of your square on the wrong side of the fabric and pin into place. (Diagram 5)

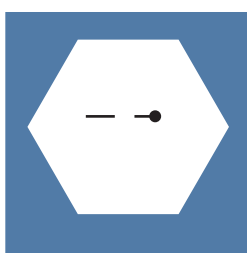


DIAGRAM 5

- Fold the top raw edge of your hexagon over your template. (Diagram 6)
- With your thumb hold fabric down over the pointed edge and fold over other side of fabric with your other hand. Hold with your thumb and from the left to the right, stitch twice at the beginning to secure your thread so you don't have to create a knot at the end of your thread. (Diagram 7)

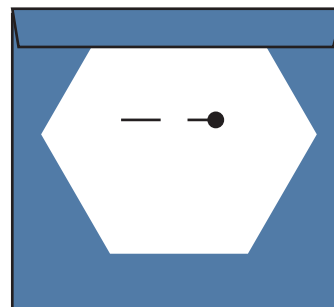


DIAGRAM 6

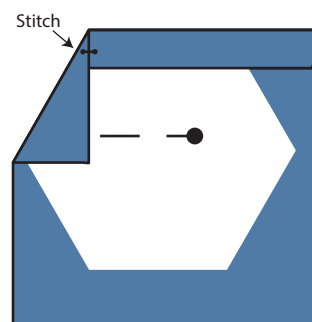


DIAGRAM 7

- Repeat this same process for all the sides of your hexagon, stitching from left to right on each corner. When you get to the last corner stitch twice to secure end.
- Remove pin and give your hexagon a good press. Remove template.
- Following the cover page glue, stay stitch or pin hexagons to the center of the large sewn hexagons. Feel free to stitch your small hexagons to the center of your large hexagons first before sewing the large hexagons together if it is easier for you.
- Place a piece of batting under your pillow top and stitch all the way around your small hexagons, sewing as close to the edge as possible to secure into place.
- Square your piece off to 21" x 21". (Diagram 8)

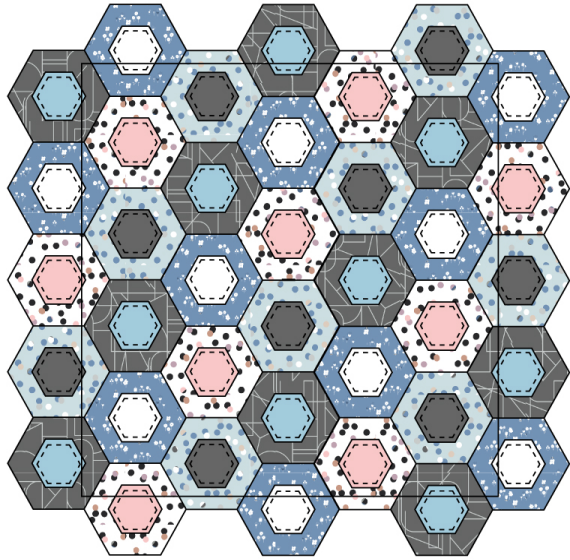


DIAGRAM 8

### Creating the Envelope Back

- To create the back of your pillow take both 13' x 21' rectangles and fold one 21' side on each rectangle in 1/2' and press and then fold another 1/2' and press. Topstitch as close to the edge as possible.
- Place rectangles right side together on top of each other to the front of your pillow and stitch all the way around your pillow at 1/2' seam allowance.
- Clip corners at seam allowance and flip piece to the right side of the fabric.
- Fill pillow with a 20' x 20' pillow form and enjoy!

Congratulations  
& enjoy



[artgalleryfabrics.com](http://artgalleryfabrics.com)

*NOTE: While all possible care has been taken to ensure the accuracy of this pattern, We are not responsible for printing errors or the way in which individual work varies. Please read instructions carefully before starting the construction of this quilt. If desired, wash and iron your fabrics before starting to cut.*

