



DESTINATION



FREE PATTERN



DESTINATION



Sharon Holland

QUILT DESIGNED BY SHARON HOLLAND



COLOR OPTION

tapestry

FABRICS DESIGNED BY SHARON HOLLAND

SUMMER GARDEN



TAP - 72490
PAPER FLOWERS AURORA



TAP - 72491
MUDCLOTH EARTH



TAP - 72492
DESTINATION FLOCK



TAP - 72493
TRACERY OCHRE



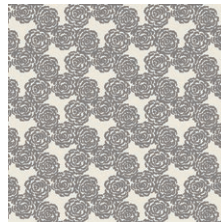
TAP - 72494
CATALYST ODYSSEY



TAP - 72495
ETERNAL BRIO



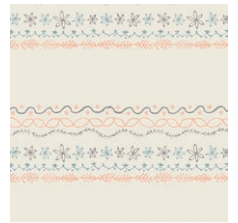
TAP - 72496
MUDCLOTH TANGER



TAP - 72497
ROSEWOOD ZINC



TAP - 72499
DHURRIE LUMINARY

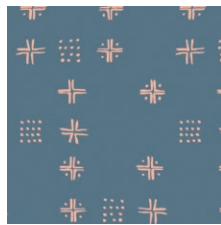


TAP - 72500
STITCHERY HANDWORK

WINTER GARDEN



TAP - 82490
PAPER FLOWERS PARCHMENT



TAP - 82491
MUDCLOTH BLUE



TAP - 82492
DESTINATION MIGRATION



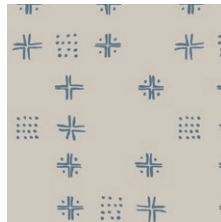
TAP - 82493
TRACERY SHADOW



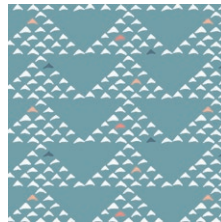
TAP - 82494
CATALYST MINTHE



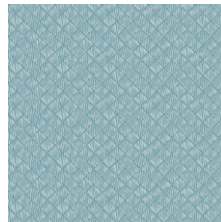
TAP - 82495
ETERNAL ELAN



TAP - 82496
MUDCLOTH INKY



TAP - 82498
DESTINATION AERIAL



TAP - 82499
DHURRIE SMOKE



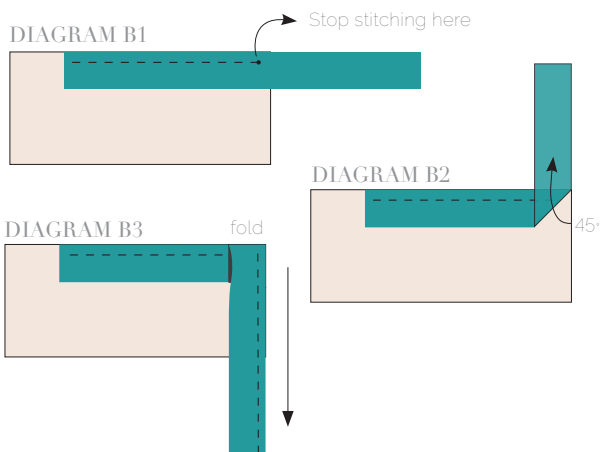
TAP - 82500
STITCHERY PATIENCE



BINDING

Sew rights sides together.

- Cut enough strips 1 ½" wide by the width of the fabric **O** to make a final strip 250" long. Start sewing the binding strip in the middle of one of the sides of the quilt, placing the strip right side down and leaving an approximated 5" tail. Sew with ¼" seam allowance (using straight stitch), aligning the strip's raw edge with the quilt top's raw edge.
- Stop stitching ¼" before the edge of the quilt (**DIAGRAM B1**). Clip the threads. Remove the quilt from under the machine presser foot. Fold the strip in a motion of 45° and upward, pressing with your fingers (**DIAGRAM B2**). Hold this fold with your finger, bring the strip down in line with the next edge, making a horizontal fold that aligns with the top edge of the quilt (**DIAGRAM B3**). Start sewing at ¼" of the border, stitching all the layers. Do the same in the four corners of the quilt.
- Stop stitching before you reach the last 5 or 6 inches. Cut the threads and remove the quilt from under the machine presser foot. Lay the loose ends of the binding flat along the quilt edge, folding the ends back on themselves where they meet. Press them together to form a crease. Using this crease as the stitching line, sew the two open ends of the binding with right sides together (you can help yourself marking with a pencil if the crease is difficult to see).
- Trim seam to ¼" and press open. Complete the sewing. Turn binding to back of the quilt, turn raw edge inside and stitch by hand using blind stitch.



Congratulations
& enjoy



artgalleryfabrics.com

NOTE: While all possible care has been taken to ensure the accuracy of this pattern, We are not responsible for printing errors or the way in which individual work varies. Please read instructions carefully before starting the construction of this quilt. If desired, wash and iron your fabrics before starting to cut.

© 2016 Courtesy of Art Gallery Quilts LLC. All Rights Reserved.