

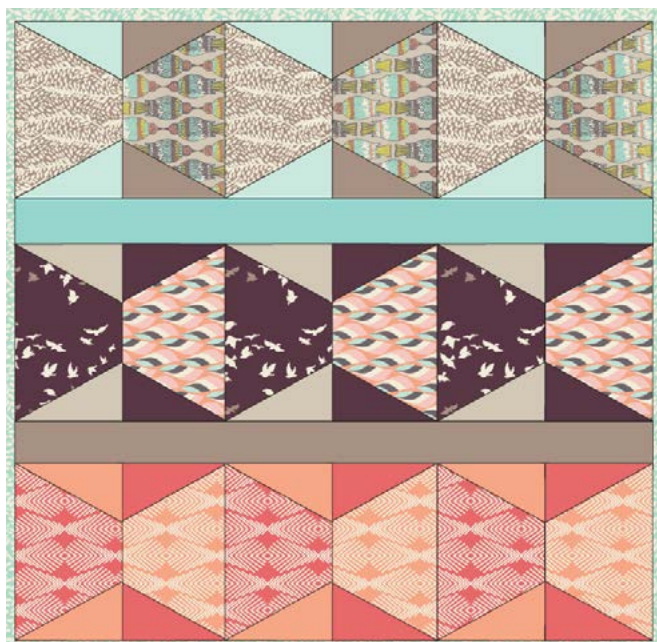


Caterpillar mini quilt

artgalleryfabrics.com

Art Gallery
FABRICS

Featuring



FABRIC REQUIREMENTS

Fabric A	WNG-1027	1/4 yd.
Fabric B	WNG-2027	1/4 yd.
Fabric C	WNG-2026	1/4 yd.
Fabric D	WNG-1021	1/4 yd.
Fabric E	WNG-1024	1/4 yd.
Fabric F	WNG-1022	1/4 yd.
Fabric G	PE-451	1/8 yd.
Fabric H	PE-403	1/8 yd.
Fabric I	PE-445	1/4 yd.
Fabric G	PE-426	1/8 yd.
Fabric K	PE-438	1/8 yd.
Fabric L	PE-400	1/8 yd.
Fabric M	PE-432	1/8 yd.

Binding Fabric

WNG-2024- 3 1/2 strips of 1 1/2" x WOF

Backing Fabric

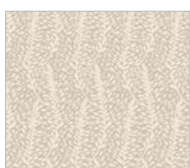
WNG-1026- 1 yd.



WNG-2027
Plumage Poppy



WNG-1027
Plumage Apricot



WNG-1024
Frilly Flutters Creme



PE-438
Coral Reef



PE-400
Cabernet



WNG-1022
Birds' Peck Jade



WNG-2026
Aves Chatter Dim



WNG-1021
Metamorphosis Quart



PE-426
Apricot Crepe



PE-445
Mink



WNG-1026
Aves Chatter Shine



WNG-2024
Frilly Flutters Mist



PE-403
Fresh Water



PE-432
Sandstone



PE-451
Icy Mint



CUTTING DIRECTIONS

- Three (3) 5 1/2" x 8 3/4" rectangles from Fabric A- F
- Three (6) 5 1/2" x 3" rectangles from Fabric G and I-M
- One (1) 4 1/2" x WOF strips from Fabric H and I

BLOCK CONSTRUCTION

Sew all rights sides together with 1/4" seam allowance.

- On rectangles from fabric G and I-M mark with a pencil a diagonal line on the wrong side of the fabric from one corner to the other corner.

Diagram 1

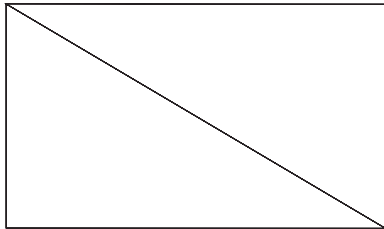


Diagram 1

- Line up the diagonal line you marked on the rectangle from Fabric K to one of the sides of the rectangles from Fabric A, sew on the diagonal line you marked with right sides together. *Diagram 2*

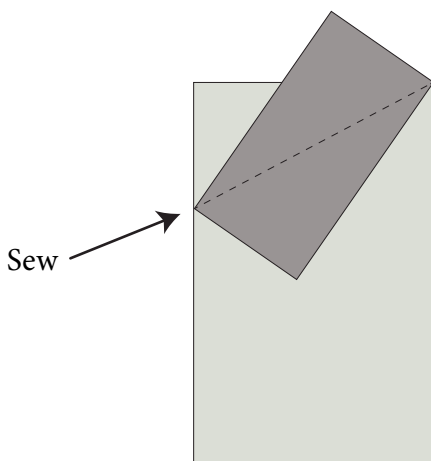


Diagram 2

- Trim off corner, leaving a 1/4" seam . Press corner up . *Diagram 3a and 3b*

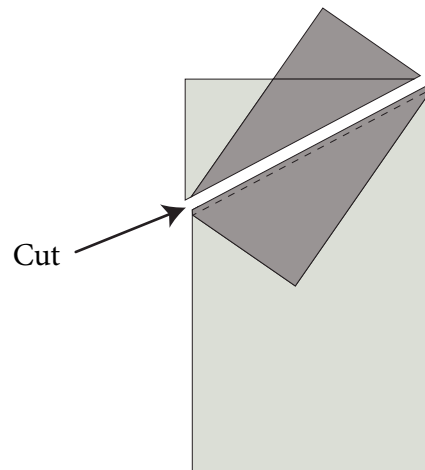


Diagram 3a

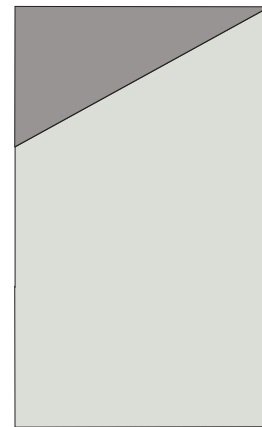


Diagram 3b

- Repeat diagram 2 and 3 on the opposite corner to finish block. Repeat with remaining rectangles from Fabric A-F and rectangles from Fabric G and I-M to make 18 blocks. *Diagram 4*

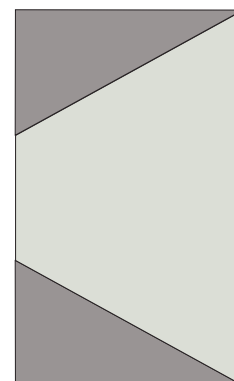
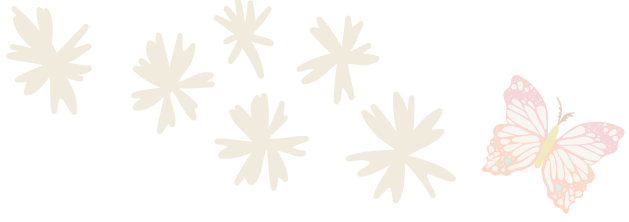


Diagram 4





ASSEMBLING THE TOP

- Arrange blocks using illustration as a guide.

Diagram 5

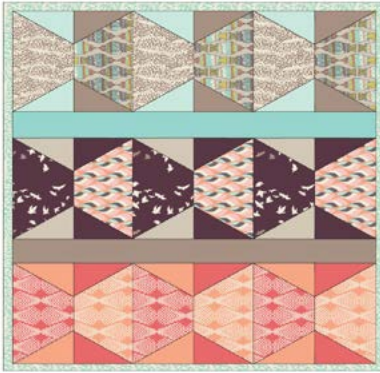


Diagram 5

- There should be 3 rows of 6 blocks each.
- Sew blocks together in each row, press seams in one direction, alternating direction every other row.
- Sew rows to 4 1/2" x WOF strip. Trim off excess.

Diagram 6

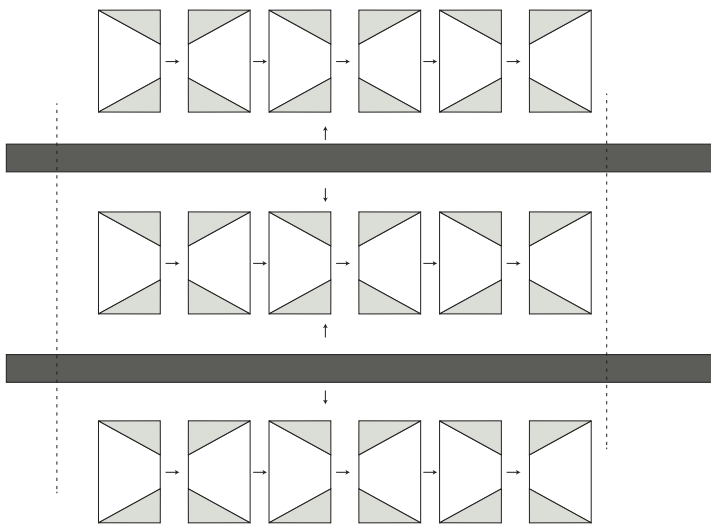


Diagram 6

QUILT ASSEMBLY

- Place BACKING FABRIC on a large surface wrong side up. Stretch it with masking tape against that surface.
- Place BATTING on top of backing fabric.
- Place TOP on top of the batting with right side facing up. Smooth away wrinkles using your hands.
- Pin all layers together and baste with basting thread, using long stitches. You can also use safety pins to join the layers.

- Machine or hand quilt starting at the center and working towards the corners. Remember that quilting motifs are a matter of personal preference. Have fun choosing yours!
- After you finished, trim excess of any fabric or batting, squaring the quilt to proceed to bind it.

BINDING

Sew right sides together.

- Cut enough strips 1 1/2" wide by the width of the fabric WNG-2024 to make a final strip 133" long. Start sewing the binding strip in the middle of one of the sides of the quilt, placing the strip right side down and leaving an approximated 5" tail. Sew with 1/4" seam allowance (using straight stitch), aligning the strip's raw edge with the quilt top's raw edge.
- Stop stitching 1/4" before the edge of the quilt (DIAGRAM B 1). Clip the threads. Remove the quilt from under the machine presser foot. Fold the strip in a motion of 45° and upward, pressing with your fingers (DIAGRAM B2). Hold this fold with your finger, bring the strip down in line with the next edge, making a horizontal fold that aligns with the top edge of the quilt (DIAGRAM B3). Start sewing at 1/4" of the border, stitching all the layers. Do the same in the four corners of the quilt.
- Stop stitching before you reach the last 5 or 6 inches. Cut the threads and remove the quilt from under the machine presser foot. Lay the loose ends of the binding flat along the quilt edge, folding the ends back on themselves where they meet. Press them together to form a crease. Using this crease as the stitching line, sew the two open ends of the binding with right sides together (you can help yourself marking with a pencil if the crease is difficult to see).
- Trim seam to 1/4" and press open. Complete the sewing. Turn binding to back of the quilt, turn raw edge inside and stitch by hand using blind stitch.



DIAGRAM B1



DIAGRAM B2



DIAGRAM B3



Feel the difference

For more free patterns visit:
artgalleryfabrics.com



enjoy!

NOTE: While all possible care has been taken to ensure the accuracy of this pattern, we are not responsible for printing errors or the way in which individual work varies. Please read instructions carefully before starting the construction of this quilt. If desired, wash and iron your fabrics before starting to cut.

© 2014 Courtesy of Art Gallery Quilts LLC.
All Rights Reserved.