

X
X
X
X
X
X
X
X
X
X
X
X

Sorbet Tote



AGF
LIMITED
edition

× × × × × × × × × × × × × × × × × × ×

Sorbet Tote

TOTE DESIGNED BY AGF STUDIO

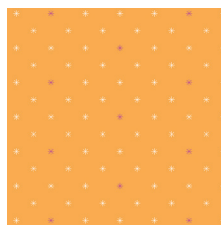


Boardwalk Delight

FABRICS DESIGNED BY DANA WILLARD



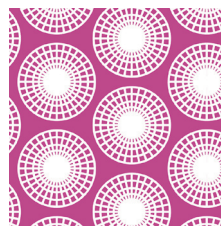
BWD-780
FLAVOR OF THE DAY



BWD-781
TWINKLE LIGHTS



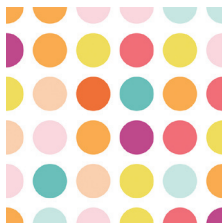
BWD-782
ICE CREAM SHOP



BWD-783
FERRIS WHEEL



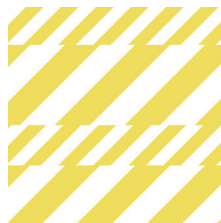
BWD-784
EAT IT ALL



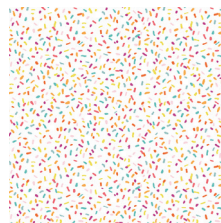
BWD-785
CANDY DOTS



BWD-786
BUSY BEACH



BWD-787
SODA STRAWS



BWD-788
SPRINKLES



BWD-789
I SCREAM, YOU SCREAM



Boardwalk Delight

FINISHED SIZE | 16' x 18'

FABRIC REQUIREMENTS

Fabric A	BWD-787	½ yd.
Fabric B	BWD-782	⅙ yd.
Fabric C	BWD-789	⅙ yd.
Fabric D	BWD-788	⅙ yd.
Fabric E	BWD-786	⅝ yd.
Fabric F	DEN-s-2003	½ yd.
Piping cord		2 yd.s

CUTTING DIRECTIONS

*1/4" seam allowances are included.
WOF means width of fabric.*

- Two (2) $10\frac{1}{2}' \times 17'$ rectangles from fabric **A**
Two (2) $2\frac{1}{2}' \times 17'$ rectangles from fabric **A**
One (1) $1' \times 2\frac{1}{2}' \times$ WOF strip from fabrics **B, C, D, E**
Two (2) $18\frac{1}{2}' \times 17'$ rectangles from fabric **E**
Two (2) $2\frac{1}{2}' \times 36'$ strips from fabric **F**
Two (2) $1' \times 36'$ strips from fabric **F**
Seven (7) $\frac{3}{4}' \times$ WOF strips from fabric **F**

CONSTRUCTION

Sew all rights sides together with ¼" seam allowance.

- Cut off selvages on all WOF strips, then cut in half.
- Sew strips to each other, off-setting each large strip by 2". Sew strips in the order:
B>F>C>F>D>F>E>B>F>C>F>D>E (Diagram 1)
- Press.
- Turn strips 45°. Check the angle with your ruler and cut two 6" x 17" rectangles. (Diagram 2)

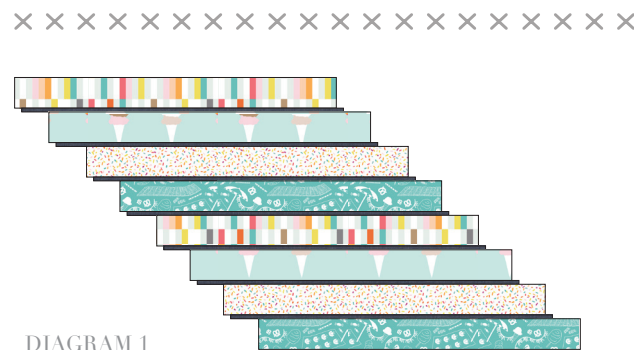


DIAGRAM 1



DIAGRAM 2

Make the Straps

- Cut piping cord in half into 1 yd. pieces.
- Sandwich the cords between the 1" fabric F strips and make piping using a piping foot or a zipper foot. Cut in half to get four 18" pieces. Set aside.

Make & Attach the Straps

- Fold the 2½' x 36' strips from fabric **F** in half length-wise, right sides together and sew down the length.
- Turn right sides out and press with seam in the center of the back.
- (optional) Top-stitch ⅛' from each long edge on straps.
- Measure 3½' inches from each side of the top piece (2½' x 17' fabric A rectangle).
- Pin straps with wrong sides against the right side of the fabric, lining up bottom edges.
- Baste stitch the straps down. (Diagram 3)



DIAGRAM 3

Assemble Front and Back

- With right sides together place the the top portions of the bag, straps facing down, onto the pieced middle sections of the bag. Sandwich an 18" piece of piping between fabrics. Line up raw edges of all pieces and sew together with a zipper foot. (Diagram 4)
- Optional: If it's your first time sewing with piping you can baste stitch the piping to the middle piece first to make sure it doesn't shift during sewing.



DIAGRAM 4

- Place the bottom bag pieces (10½" x 17" rectangles from fabric **A**) onto the bottom edges of the middle pieces, with piping in between the layers. Line up raw edges, sew with a zipper foot.
- Sew front and back of bag together as well as your two lining pieces with right sides together. Sew at 1/2" seam allowance. (Diagram 5) Press seams open.
- **Important: Leave a small unsewn portion in the bottom of the lining to pull right side of bag through .**

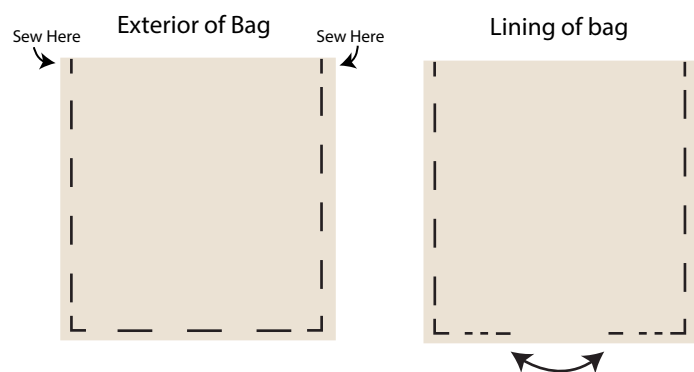


DIAGRAM 5

- Place the bag exterior inside the lining making sure right sides are touching and that the straps are inside and out of the way. Match raw edges, pin and sew all the way around the top of your bag at 1/2" seam allowance.
- Add reinforcement stitches to the portions of the bag top that have handles to strengthen the areas.
- Pull exterior of bag through the unsewn portion in the lining.
- Handstitch or machine stitch unsewn portion.
- Press the top of the bag, fill with goodies and you're ready to go to the boardwalk!



artgalleryfabrics.com

NOTE: While all possible care has been taken to ensure the accuracy of this pattern, We are not responsible for printing errors or the way in which individual work varies.