

Silver Lining

AGF studio

HANDBAG DESIGNED BY AGF STUDIO

Wonderland

FABRICS DESIGNED BY *Katarina Rocella*



FABRIC REQUIREMENTS

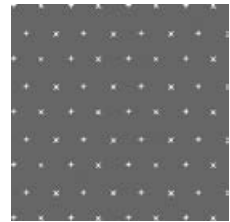
| | | |
|----------|----------|-------|
| Fabric A | WND-2536 | ¾ yd. |
| Fabric B | WND-1532 | ⅝ yd. |
| Fabric C | WND-1537 | ⅓ yd. |
| Fabric D | PE-431 | ¾ yd. |

ADDITIONAL MATERIALS

- Magnetic Snap
- Fusible Fleece
- Extra Firm Stabilizer



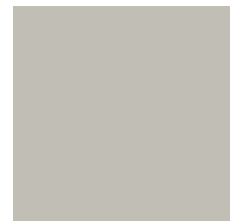
WND-2536
UNCAGED WORDS MINT



WND-1532
YOUR HEART TIMID



WND-1537
CHESHIRE FEATHERS FOG



PE-431
MYSTIC GREY



CUTTING DIRECTIONS

½" seam allowances are included. Take pattern pieces together at notches.

- Two (2) Exterior Bag in Fabric **A**, Fabric **D**, and Fusible Fleece (Front, Back, and Lining)
- Two (2) Middle Bag in Fabric **B**
- One (1) 6" x WOF from Fabric **B** and Fusible Fleece (Strap)
- Two (2) Front Flap in Fabric **C** (Flap)
- One (1) Front Flap in Fusible Fleece
- Two (2) 3' x 16' strips from Fabric C
- One (1) 3' x 16' strip from Fusible Fleece
- Two (2) 3' x WOF from Fabric **A**, Fabric **D**, and Fusible Fleece (Side Panel)

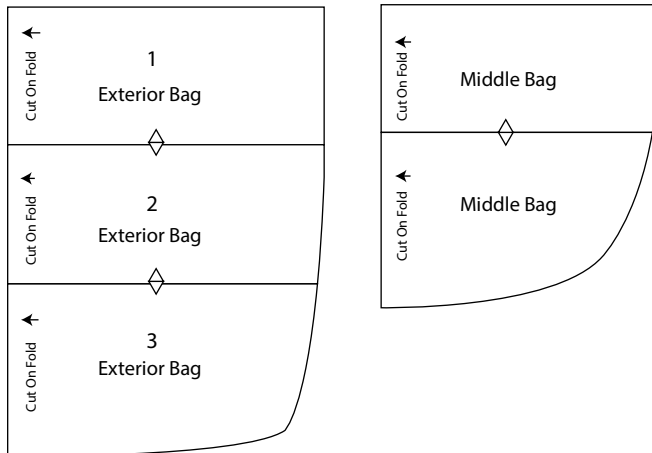


DIAGRAM 1.1

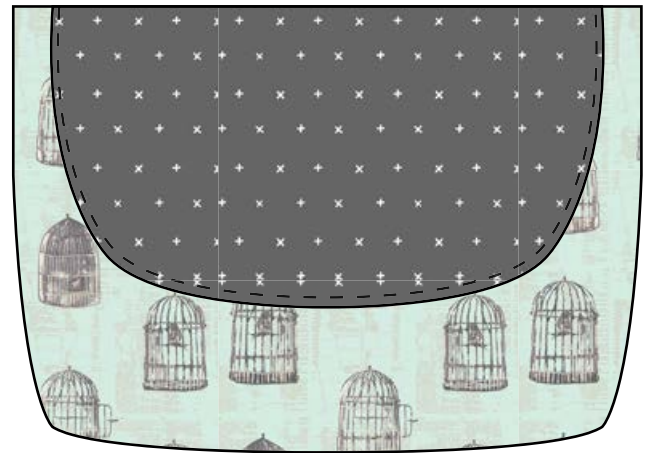


DIAGRAM 1.2

- Sew both of your flap pieces to a 3' x 16' strips from Fabric **C**.

(Diagram 2)

CONSTRUCTION

Sew all rights sides together with ½" seam allowance.

- Once all your pattern pieces are taped together and cut out, iron fusible fleece to the wrong side of your exterior pieces cut in Fabric **A**, your strap piece cut in Fabric **B**, one of your flap pieces and 3' x 16' strips cut in Fabric **C**.
- Next take both middle bag pieces cut in Fabric **B** and sew wrong sides together following Diagram 1. With a small scissor snip the curves and flip piece right side out and press flat.
- Find the mid point of your middle bag, place it at the mid point of one of your exterior bag pieces cut in Fabric **A**. Pin in place and topstitch middle bag down at 1/8" (Diagram 1.2)

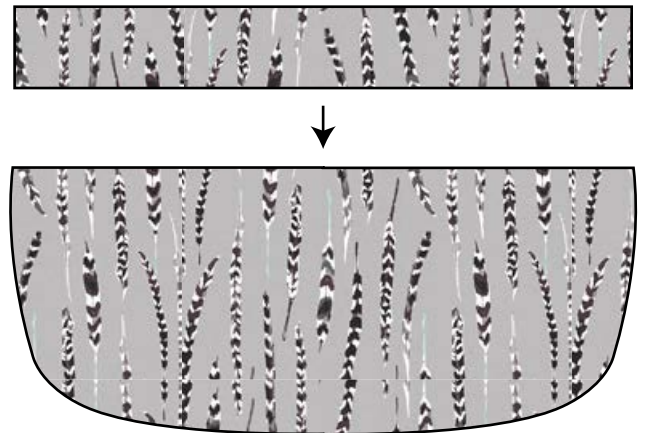


DIAGRAM 2

