

Pastiche

TOTE DESIGNED BY PAT BRAVO

ARTISAN

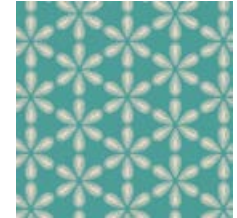
FABRICS DESIGNED BY Pat Bravo



ART-53106
FLEURON ETCH AUTUMN



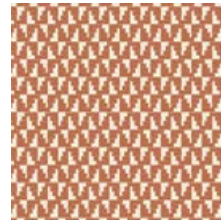
ART-43100
AD LIB BLOOMS SHOUT



ART-53104
WOODBURN GROOVE CRISP



ART-43104
WOODBURN GROOVE DENSE



ART-43103
MAHOGANY BLOCKS



ART-53107
AGED ALLURE RAW



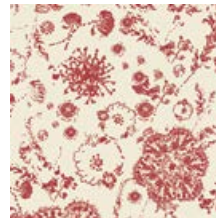
ART-53108
COLLAR ENDS BRONZE



ART-53109
PYROGRAPHY NORTH



ART-53100
AD LIB BLOOMS QUIET



ART-43106
FLEURON ETHC CRIMSON



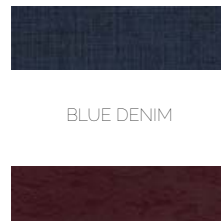
ART-43102
BETOKEN SHINES



ART-43110
EMBELLISHMENTS GILD



ART-53102
BETOKEN SPARKS



BLUE DENIM



PE-436
CREME DE LA CREME



FAUX LEATHER



PE-429
COFFEE BEAN



FABRIC REQUIREMENTS

Fabric A	ART-53106	1/8 yd.
Fabric B	ART-43100	1/8 yd.
Fabric C	ART-53104	1/8 yd.
Fabric D	ART-43104	1/8 yd.
Fabric E	ART-43103	1/8 yd.
Fabric F	ART-53107	1/8 yd.
Fabric G	ART-53108	1/8 yd.
Fabric H	ART-53109	1/8 yd.
Fabric I	ART-53100	1/8 yd.
Fabric J	ART-43106	1/8 yd.
Fabric K	ART-43102	1/8 yd.
Fabric L	ART-43110	1/8 yd.
Fabric M	ART-53102	1/8 yd.
Fabric N	PE-436	3/4 yd.
Fabric O	PE-429	3/8 yd.
Fabric P	Blue Denim	1/4 yd.
Fabric Q	Faux Leather	1/4 yd.

ADDITIONAL MATERIALS

- Fusible Fleece
- Ultra Firm Single Sided Fusible

CUTTING DIRECTIONS

4 1/2" x 4 1/2" squares:

- Four (4) from Fabric **A** and **F**
- Two (2) from Fabric **B,C,D,E,G,H,I,J,K,L**, and **M**
- Two (2) 6" x 32" strips from Fabric **O** (handles)
- Two (2) 2" x 32" strips from Ultra Firm Fusible
- Ten (10) from Faux Leather
- Ten (10) from Blue Denim
- Once your back and front bag are sewn and squared off you will use it as a template to cut the lining of your bag in Fabric **N** and **Fusible Fleece**.

EXTERIOR OF BAG

CONSTRUCTION

Sew all rights sides together with 1/4" seam allowance.

- Sew the following rows consisting of 4 1/2' x 4 1/2' squares together. (Diagram 1)
- Row 1- **A,P,B,Q**, and **C**
- Row 2- **Q,D,E,F**, and **P**
- Row 3- **P,G,H,I**, and **Q**
- Row 4- **Q,J,P,A**, and **K**
- Row 5 - **F,P,L,Q**, and **M**

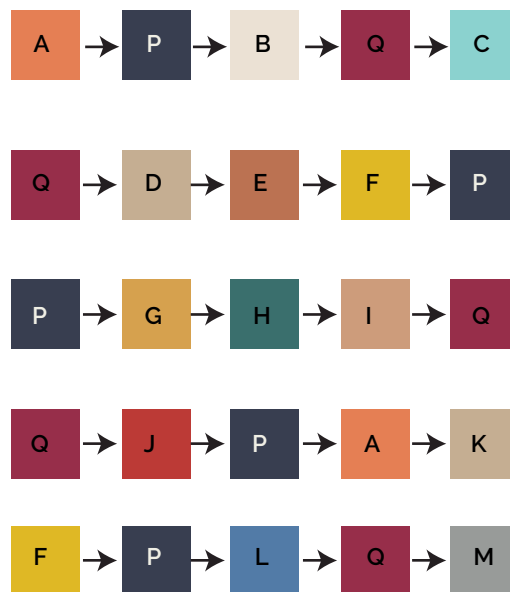


DIAGRAM 1

- Sew Row 1-5 together matching up seams. (Diagram 2)

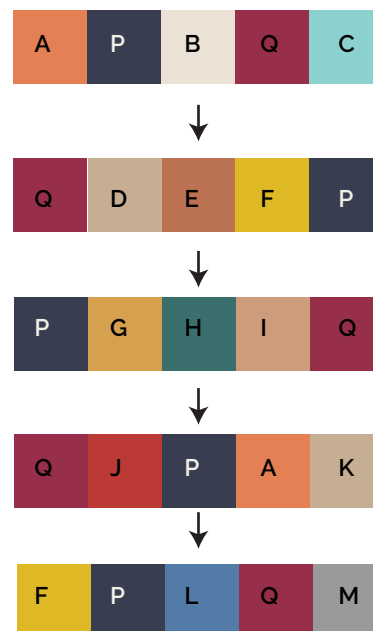


DIAGRAM 2

- You should now have a piece that looks like Diagram 3. Repeat steps in Diagram 1-2 to create the other side of your tote. Square of pieces and use as a template to cut two lining pieces for your tote with Fabric N and two fusible fleece pieces. Fuse pieces to the wrong side of the lining.



DIAGRAM 3

- Sew front and back of bag together as well as your two lining pieces with right sides together. Sew at $1/2$ " seam allowance. (Diagram 4)

Important: Leave a small unsewn portion in the bottom of the lining to pull right side of bag through .

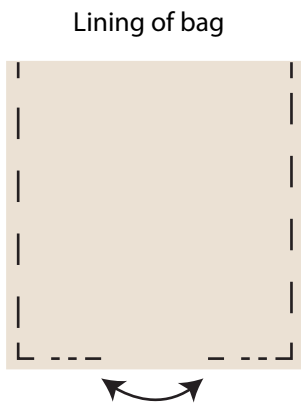
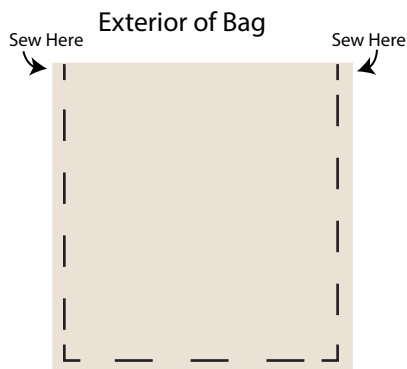


DIAGRAM 4

BOX CORNERS CONSTRUCTION

- We want to box the interior corners to get a really nice flat bottom on the bag; this way the tote bag will have more body.
- Take the exterior of the bag (wrong side out) and pinch apart the two layers of the purse to get a little triangle on one corner. Flatten it down a little bit and make sure the top and bottom seams are lined up. Hold it tight.
- Place the bag flat on the table. Take the acrylic ruler with the 45° angle and lay it on the corner so that the 45° line is right on the edge of the triangle corner.
- We want to do a $3"$ gusset for this purse, so draw a line 3 long (with the air-erasable marker) right across the bottom of the 45° corner.
- Stitch on top of the marked line. Trim excess fabric if desired, or leave it to add more body to the corner.
- Repeat these steps for the other tote corner and for both lining corners as well.

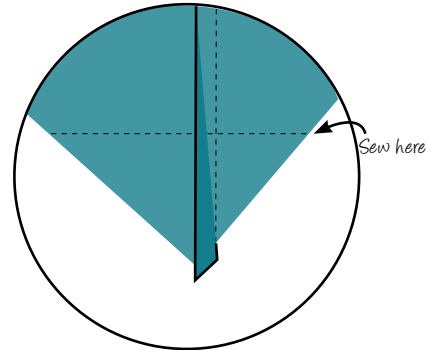


DIAGRAM 5

Creating the Straps:

- Place a $2"$ ultra firm fusible to the middle of a $6" \times 32"$ strip from Fabric O. (Diagram 6.1)
- Fold over the right side of the strip, placing it on top of the fusible and fuse into place. (Diagram 6.2).
- Fold the left side of the strip $1/2"$, then fold it again placing it on top of fusible, zigzag down the middle of your strap. (Diagram 6.3-6.4)
- Repeat steps from Diagram 6.1-6.4 for the other handle.

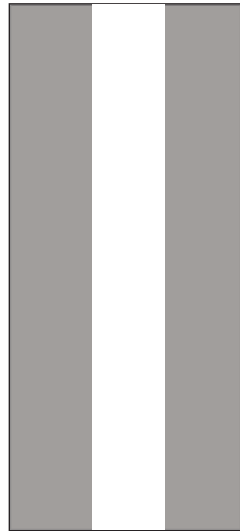


DIAGRAM 6.1

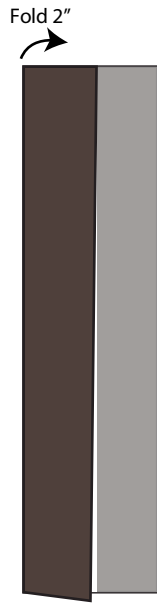


DIAGRAM 6.2

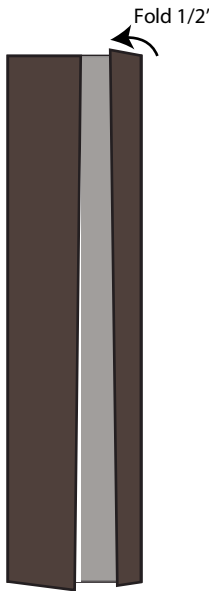


DIAGRAM 6.3

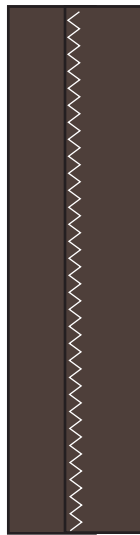


DIAGRAM 6.4

- To secure the straps to your tote place one end $3 \frac{3}{4}$ ' in from the top side of your tote and stitch in place. Repeat with the other end of your strap at the other end of your bag.
- Repeat the same process to secure your other strap to the other side of your tote. (Diagram 7)

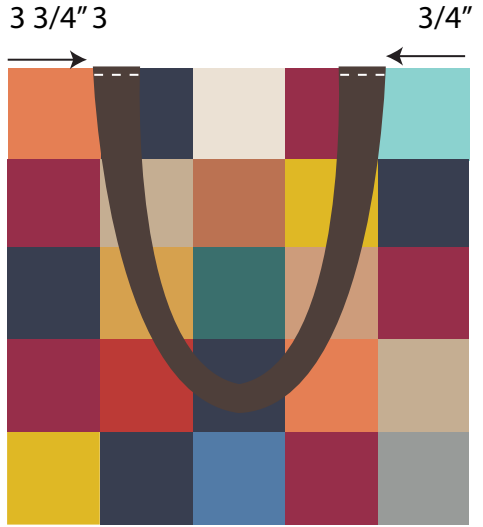


DIAGRAM 7

- Place exterior of bag inside lining making sure right sides are touching and that the straps are out of the way. Pin lining to the exterior of the bag and sew all the way around the top of your bag at $\frac{1}{2}$ ' seam allowance.
- Pull exterior of bag through the unsewn portion in the lining.
- Handstitch or machine stitch unsewn portion.



To see more patterns, fabrics and lots of inspiration visit:

patbravo.com

NOTE: While all possible care has been taken to ensure the accuracy of this pattern, we are not responsible for printing errors or the way in which individual work varies. Please read instructions carefully before starting the construction of this quilt. If desired, wash and iron your fabrics before starting to cut.

© 2015 Courtesy of Pat Bravo. All Rights Reserved.