

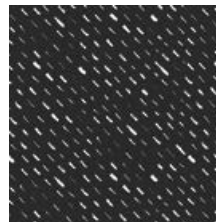
ELAINA

AGF studio

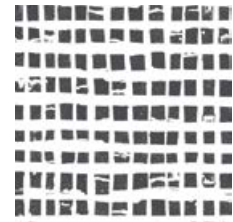
CLUTCH DESIGNED BY AGF STUDIO

AVANTGARDE

FABRICS DESIGNED BY *Katarina Rocella*



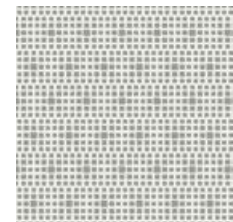
AVG-18906
CHALK ON CHARCOAL



AVG-28907
SEPARATION IMPERFEC



AVG-28910
UNINHIBITED BASK



SE-606
SHADOW

FABRIC REQUIREMENTS

Fabric A	AVG-18906	Fat Eighth
Fabric B	AVG-28907	Fat Eighth
Fabric C	AVG-28910	Fat Eighth
Fabric D	SE-606	Fat Eighth

ADDITIONAL MATERIALS

- 12" All Purpose Zipper
- One (1) Magnetic Snap
- One (1) 1 1/2" Circle Ring
- Pellon Craft and Home Decor Interfacing 926
- Fusible Fleece



