

# Ecru Hearts Handbag

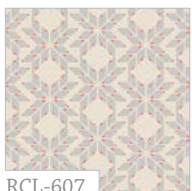
## REcollection

By Katarina Rocella



### FABRIC REQUIREMENTS

- Fabric A RCL-607 1/2 yd.
- Fabric B PE-431 5/8 yd.
- Fabric C PE-437 Scraps



RCL-607  
Fairisle Hearts Greige



PE-431  
Mystic Grey



PE-437  
London Red

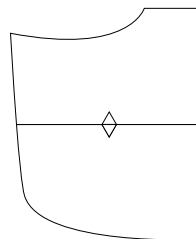
### Other Materials

- 80" long rope thats 1 1/2" thick
- Interfacing Fleece - TP971F
- All Purpose Glue

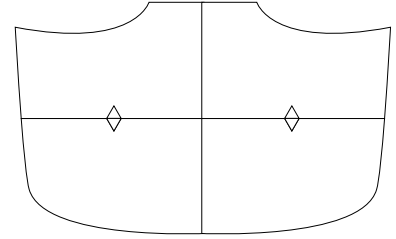
### CUTTING DIRECTIONS

1/4" seam allowances are included.

Cut out purse pattern, line up notches and tape. Cut pattern on fold or make a full purse pattern and then you don't have to cut on the fold.



Half Purse Pattern



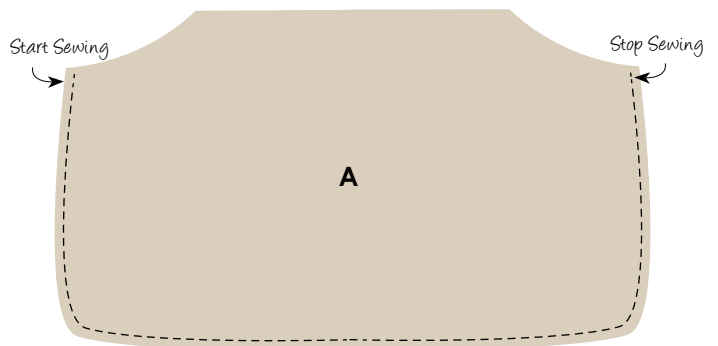
Full Purse Pattern

- Cut two (2) Purse patterns on fold from Fabric A
- Cut two (2) Purse patterns on fold from Fabric B
- Cut two (2) 2 1/2" x 11" strips from Fabric B
- Cut one (1) 2 1/2" x 19 1/2" from Fabric B
- Cut two (2) 1/2" x 6" strips from Farbic C
- Cut two (2) Purse patterns on fold from Interfacing Fleece

### ASSEMBLING THE HANDBAG

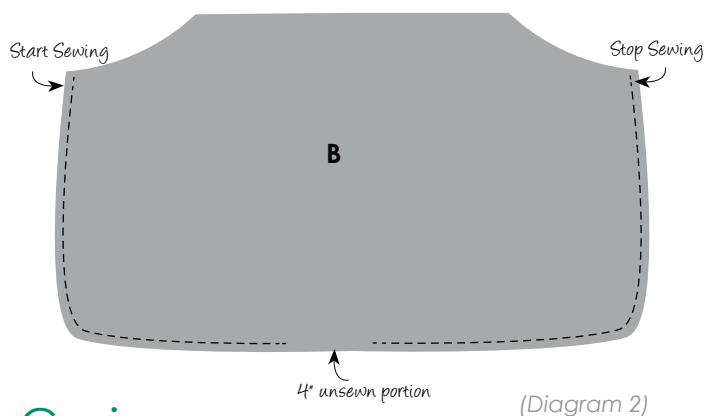
Sew all rights sides together with 1/4" seam allowance. Press.

- Take both purse pattern pieces from Fabric A and sew right sides together sewing from one side to the other side. (Diagram 1)



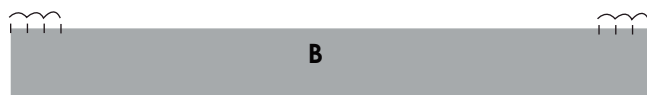
(Diagram 1)

- Take both pattern pieces from Fabric **B** and iron interfacing fleece pieces to the wrong side of the fabric. These piece are the lining of the bag.
- Repeat same process in Diagram 1 but leave a 4" unsewn portion at the bottom of the bag.  
(Diagram 2)



## Casing :

- Take 2 1/2" x 11" strips from Fabric **B** on each short end fold 1/2" and press. Fold another 1/2" and press. Topstitch as close to the edge as possible to secure the raw edges. (Diagram 3a)
- Repeat this same process for the 2 1/2" x 19 1/2" strip from Fabric **B**.
- Next fold all strips in half lengthwise and press.  
(Diagram 3b)



Mark three 1/2" marks out from each end and fold



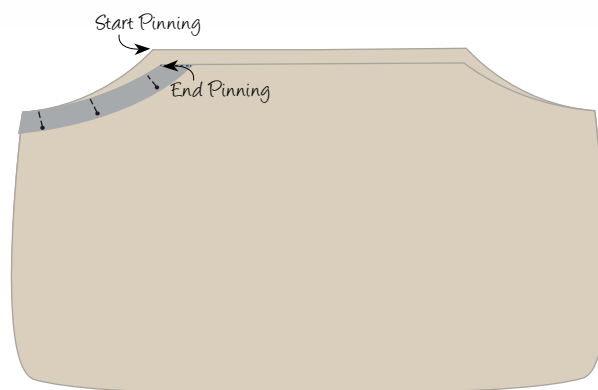
Press and topstitch on fold

(Diagram 3a)



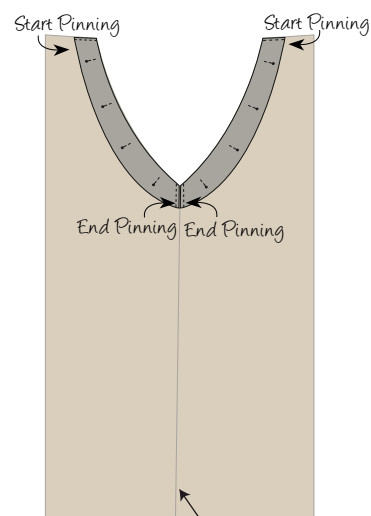
(Diagram 3b)

- Pin 2 1/2" x 19 1/2" strip from Fabric **B** to the left side, top of the bag. Starting from one point of the curve to the other end. Follow Diagram 4.



(Diagram 4)

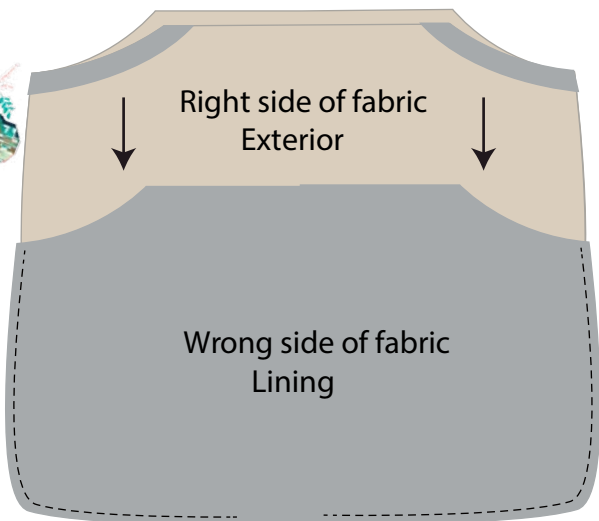
- Repeat same process in Diagram 4 to secure the other two 2 1/2" x 11" strips.
- Pin a 2 1/2" x 11" to the right side, top of bag. Start at one point and pin other end to the side seam.
- Pin the other 2 1/2" x 11" strip the same way on the other side of the bag. (Diagram 5)



Side Seam

(Diagram 5)

- Secure casing strips to front of bag by sew at 1/4" .
- Take lining piece with wrong side of the fabric out. Next take the exterior of the bag with right side of the fabric out.
- Take the exterior of the bag and tuck inside the lining.
- Pin all the way around the top of the bag making sure the casing is facing down the side front of the bag. (Diagram 6)
- Sew 1/4" all the way around the bag making sure the casing lays flat.
- Pull the right side of the bag through the unsewn portion you left in the lining.
- Hand stitch unsewn portion closed.
- Press seams flat.



(Diagram 6)

## Assembling the Straps:

- The last step is to pull the rope through the casing.
- Take a safety pin and secure it to the end of one side of the rope.
- Insert rope through one side of the bag and inch your way through the casing until you reach the end where you started.
- You can use more or less rope to make your strap the desired length.
- At the ends of the rope tie a single knot.
- If desired take two 1/2" x 6" strips from Fabric C. Add glue to one end of the strip and apply to both ends of the rope starting about 3 1/2" up from the end.
- Wrap around the rope until you run out of fabric and secure end of strip with glue and apply to the rope.



*enjoy!*



*Feel the difference*

For more free patterns visit:

[artgalleryfabrics.com](http://artgalleryfabrics.com)

NOTE: While all possible care has been taken to ensure the accuracy of this pattern, we are not responsible for printing errors or the way in which individual work varies. Please read instructions carefully before starting the construction of this quilt. If desired, wash and iron your fabrics before starting to cut.

© 2014 Courtesy of Art Gallery Quilts LLC.  
All Rights Reserved.

Center Front



Cut on Fold

Bottom Bag

Line up notches

Purse Template

Center Front ↑ Cut on Fold

# Top Bag

Line up notches 