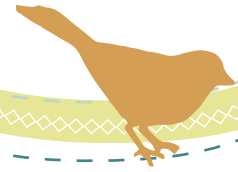


# Belts & BUCKLES

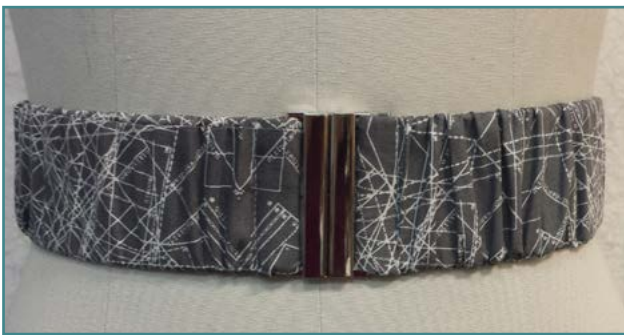
FREE PROJECT  
By Art Gallery Fabrics



Featuring  
**Indelible** BY

*Katarina Roccella*

## ELASTIC BELT



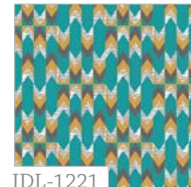
IDL-2222  
Spirodraft Carbon

Fabric **A**

### Materials Needed

- 1/4 yd from fabric A
- 2" Knit Elastic
- 2" Fashion Buckle

## TWO-BUCKLE BELT



IDL-1221  
Stylus Text Lagoon

Fabric **B**

### Materials Needed

- 1/3 yd from fabric B
- 70 Peltex Ultra Firm (to make belt stiff)
- Two (2) 1 1/2" D-Rings



# CUTTING DIRECTIONS



1/2" seam allowances are included.

## For Elastic Belt

- Two (2) 3" x WOF strip from fabric A.
- Measure your waist and subtract 2" from that measurement. This will be how long you cut your elastic.

## For Two-Buckle Belt

- Four (4) 2 1/2" x WOF strip from fabric B.



## CONSTRUCTION

Sew all rights sides together with 1/2" seam allowance. Press open.



### Elastic Belt

- Sew two (2) 3" x WOF strips from fabric A with right sides together.

Sew



Figure 1

- To turn inside out attach safety pin to one side of strip and feed through, inching your way down to the other end of the tube. Pull through.
- Attach safety pin to elastic and feed elastic through tube of fabric.

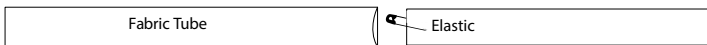


Figure 2

### Two-Buckle Belt

- Sew two (2) 2 1/2" strips together like in figure 1. Repeat with other strips.

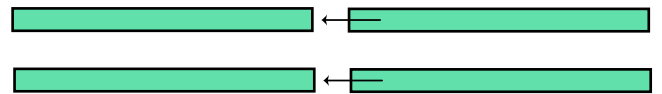
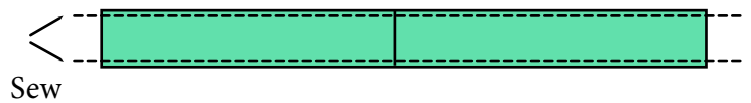


Figure 1

- Measure waist and figure out how long you would like your belt. Line the center back seam up with your back. You want to have a good amount of extra fabric to fasten the belt. Once you have chosen your desired length, cut both strips the same length and sew them together.



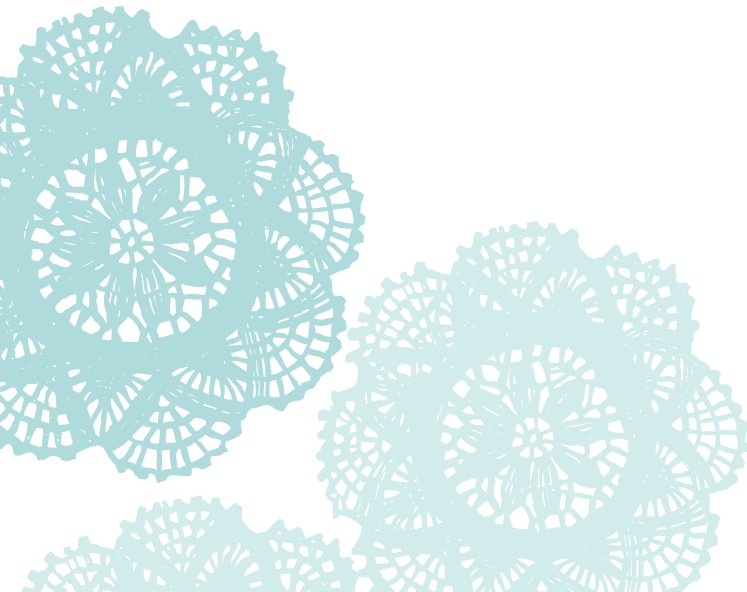
Sew

Figure 2

- To turn inside out attach safety pin to one side of strip and feed through, inching your way down to the other end of the tube. Pull through. (Figure 3)



Figure 3



## Elastic Belt (continued)

- Once the elastic is secure in the tube of fabric you can attach each end to the belt buckle. Feed through belt buckle and turn under 1/4" and then turn again and topstitch down. Repeat for other side.



Figure 3

## Two-Buckle Belt (continued)

- Cut 70 Peltex Ultra Firm fusible to the same length. Pull fusible through fabric tube.



Figure 4

- Once fusible is securely in fabric tube. Loop one side of strip through two (2) D-rings. Fold under raw edge with flat side of rings in fold. Stitch through all thickness close to rings. Finish other end of strap as desired.



Figure 5



*Feel the difference*  
For more free patterns visit:

[artgalleryfabrics.com](http://artgalleryfabrics.com)

NOTE: While all possible care has been taken to ensure the accuracy of this pattern, we are not responsible for printing errors or the way in which individual work varies. Please read instructions carefully before starting the construction of this quilt. If desired, wash and iron your fabrics before starting to cut.

© 2014 Courtesy of Art Gallery Quilts LLC.  
All Rights Reserved.

