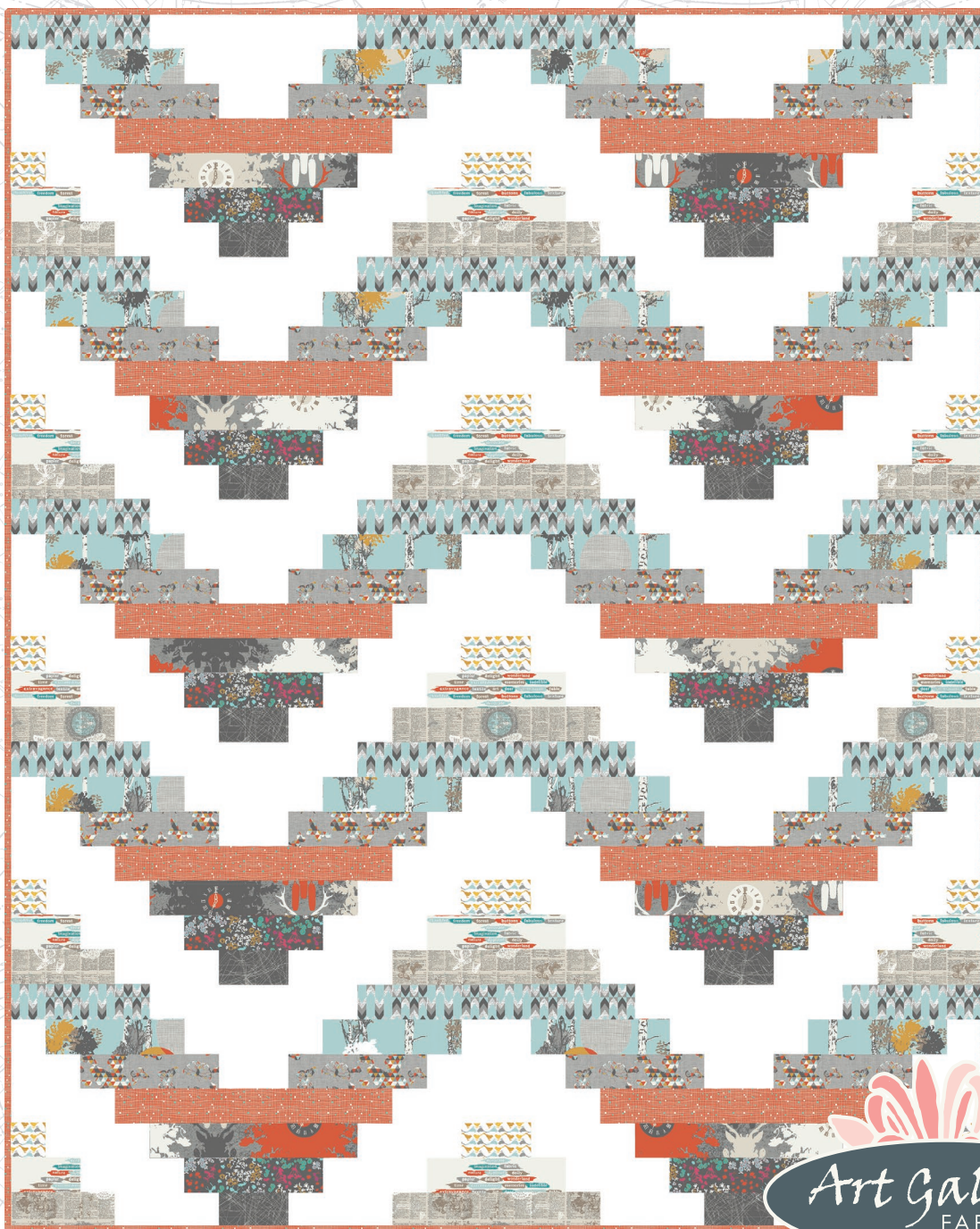


STAMPED

{ FEATURING INDELIBLE COLLECTION }



Art Gallery
FABRICS

FREE PROJECT SHEET

DESIGNED BY *Katarina Roccella*

QUILT DESIGNED BY
Katarina Roccella



FINISHED SIZE: 56" X 70"

KIT QUANTITY

IDL-2221	3/8 yd.
IDL-2229	3/8 yd.
IDL-2227	3/8 yd.
IDL-2225	3/4 yd.
IDL-2223	3/8 yd.
IDL-2224	1/4 yd.
IDL-2222	1 7/8 yd.
IDL-2220	3/8 yd.
IDL-2226	1/4 yd.
IDL-2228	1/6 yd.
PE-433	1 3/4 yd.
Backing	4 yd.



Indelible

by *Katarina Roccella*

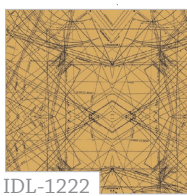
DARKENED INK



IDL-1220
Time Is Deer Coal



IDL-1221
Stylus Text Lagoon



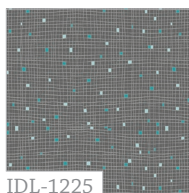
IDL-1222
Spirocraft Ocre



IDL-1223
Doiland Gloss Plum



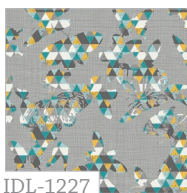
IDL-1224
Floret Stains Tealberry



IDL-1225
Threaded Shreds Dim



IDL-1226
Papered Phrases
cloudy



IDL-1227
Flutter Folds Ash



IDL-1228
Birdstencil PM



IDL-1229
Stamped Grove
Nighthall

SUBTLE WATERMARKS



IDL-2220
Time Is Deer Ember



IDL-2221
Stylus Text Sky



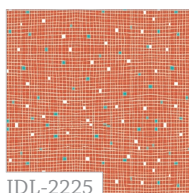
IDL-2222
Spirocraft Carbon



IDL-2223
Doiland Gloss Silver



IDL-2224
Floret Stains Mulberry



IDL-2225
Threaded Shreds
Mamey



IDL-2226
Papered Phrases Sunny



IDL-2227
Flutter Folds Spark



IDL-2228
Birdstencil AM



IDL-2229
Stamped Grove
Daylight

QUILT DESIGNED BY
Katarina Roccella



FINISHED SIZE: 56" X 70"

FABRIC REQUIREMENTS

Fabric A	IDL-2221	3/8 yd.
Fabric B	IDL-2229	3/8 yd.
Fabric C	IDL-2227	3/8 yd.
Fabric D	IDL-2225	3/4 yd.
Fabric E	IDL-2223	3/8 yd.
Fabric F	IDL-2224	1/4 yd.
Fabric G	IDL-2222	1/6 yd.
Fabric H	IDL-2220	3/8 yd.
Fabric I	IDL-2226	1/4 yd.
Fabric J	IDL-2228	1/6 yd.
Fabric K	PE-433	1 3/4 yd.

Backing Fabric

IDL-2229 2 yds. (suggested)

IDL-2228 2 yds. (suggested)

Binding Fabric

IDL-2225 (Fabric **D**) (included)

FABRICS DESIGNED
BY KATARINA ROCCELLA
FOR ART GALLERY FABRICS



CUTTING DIRECTIONS

1/4" seam allowances are included.

Twenty (20) 8 1/2" x 2 1/2" rectangles from fabric **A**

Twenty (20) 8 1/2" x 2 1/2" rectangles from fabric **B**

Twenty (20) 8 1/2" x 2 1/2" rectangles from fabric **C**

Twenty (20) 8 1/2" x 2 1/2" rectangles from fabric **D**

Twenty (20) 6 1/2" x 2 1/2" rectangles from fabric **E**

Twenty (20) 4 1/2" x 2 1/2" rectangles from fabric **F**

Twenty (20) 2 1/2" x 2 1/2" squares from fabric **G**

Twenty (20) 6 1/2" x 2 1/2" rectangles from fabric **H**

Twenty (20) 4 1/2" x 2 1/2" rectangles from fabric **I**

Twenty (20) 2 1/2" x 2 1/2" squares from fabric **J**

Forty (40) 2 1/2" x 2 1/2" squares from fabric **K**

Forty (40) 4 1/2" x 2 1/2" rectangles from fabric **K**

One-Hundred (100) 6 1/2" x 2 1/2" rectangles from fabric **K**



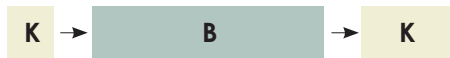
BLOCK CONSTRUCTION

Sew all right sides together with $\frac{1}{4}$ " seam allowances.
Press seams open.

- Follow the cover picture for fabric placement
- Take one $8\frac{1}{2}$ " x $2\frac{1}{2}$ " rectangle from fabric **A** and one $6\frac{1}{2}$ " x $2\frac{1}{2}$ " rectangle from fabric **K**
- Attach them in the following order **AK**
(DIAGRAM 1)



- Take one $2\frac{1}{2}$ " x $2\frac{1}{2}$ " square from fabric **K**, one $8\frac{1}{2}$ " x $2\frac{1}{2}$ " rectangle from fabric **B** and one $4\frac{1}{2}$ " x $2\frac{1}{2}$ " rectangle from fabric **K**
- Attach them in the following order **KBK**
(DIAGRAM 2)



- Take one $4\frac{1}{2}$ " x $2\frac{1}{2}$ " rectangle from fabric **K**, one $8\frac{1}{2}$ " x $2\frac{1}{2}$ " rectangle from fabric **C** and one $2\frac{1}{2}$ " x $2\frac{1}{2}$ " square from fabric **K**
- Attach them in the following order **KCK**
(DIAGRAM 3)



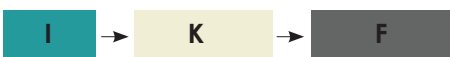
- Take one $6\frac{1}{2}$ " x $2\frac{1}{2}$ " rectangle from fabric **K**, one $8\frac{1}{2}$ " x $2\frac{1}{2}$ " rectangle from fabric **D**
- Attach them in the following order **KD**
(DIAGRAM 4)



- Take one $2\frac{1}{2}$ " x $2\frac{1}{2}$ " square from fabric **J**, one $6\frac{1}{2}$ " x $2\frac{1}{2}$ " rectangle from fabric **K** and one $6\frac{1}{2}$ " x $2\frac{1}{2}$ " rectangle from fabric **H**
- Attach them in the following order **JKH**
(DIAGRAM 5)



- Take one $4\frac{1}{2}$ " x $2\frac{1}{2}$ " rectangle from fabric **I**, one $6\frac{1}{2}$ " x $2\frac{1}{2}$ " rectangle from fabric **K** and one $4\frac{1}{2}$ " x $2\frac{1}{2}$ " rectangle from fabric **F**
- Attach them in the following order **IKF**
(DIAGRAM 6)

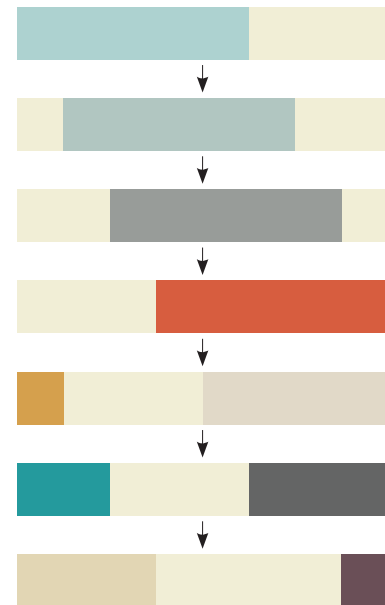


- Take one $6\frac{1}{2}$ " x $2\frac{1}{2}$ " rectangle from fabric **E**, one $6\frac{1}{2}$ " x $2\frac{1}{2}$ " rectangle from fabric **K** and one $2\frac{1}{2}$ " x $2\frac{1}{2}$ " square from fabric **G**
- Attach them in the following order **EKG**
(DIAGRAM 7)



- Join the composed horizontal rows vertically, as shown in the diagram below.
- Repeat the previous steps until your done with twenty blocks.

(DIAGRAM 8)



NOTE: For the quilt layout shown, you will need to make 10 blocks in one orientation (A) and 10 blocks that are a "mirror image" (B).

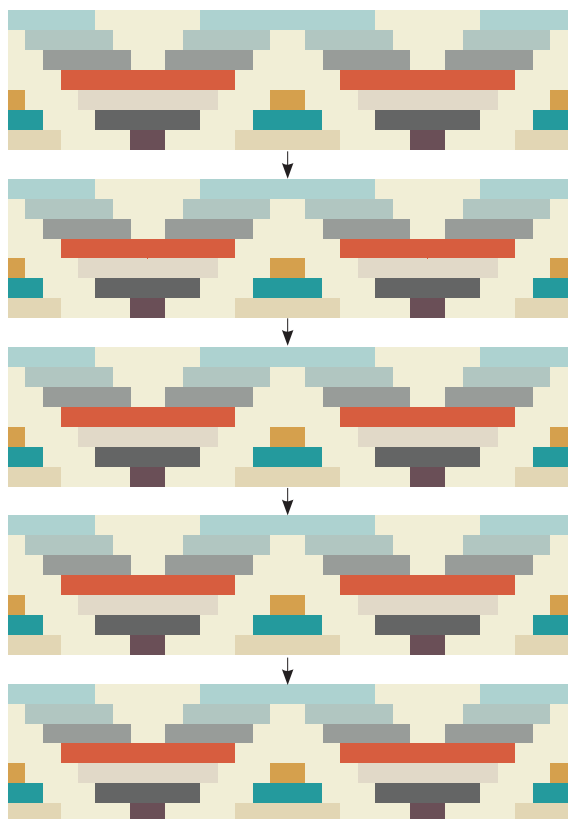
While mirror image blocks can be made by simply turning each pieced row (rows 1-7 above) for 180 degrees that will result in some of the directional prints to be upside down. If you want to avoid that, construct 10 blocks B by reversing the order of fabrics in each row (rows 1-7 above) this way you will achieve the chevron look.

ASSEMBLING THE TOP

Sew all right sides together with $\frac{1}{4}$ " seam allowances. Press Seams open.

- Start sewing the blocks horizontally as shown in the diagram below (attach four blocks for each row)
- When you are done with five rows start to sew them together vertically.

(DIAGRAM 5)



QUILT ASSEMBLY

Sew right sides together.

- Place BACKING FABRIC on a large surface wrong side up. Stretch it with masking tape against that surface.
- Place BATTING on top of backing fabric.
- Place TOP on top of the batting with right side facing up. Smooth away wrinkles using your hands.
- Pin all layers together and baste with basting thread, using long stitches. You can also use safety pins to join the layers.
- Machine or hand quilt starting at the center and working towards the corners. Remember that quilting motifs are a matter of personal preference. Have fun choosing yours!
- After you finish, trim excess of any fabric or batting, squaring the quilt to proceed to bind it.

BINDING

Sew right sides together.

- Cut enough strips $1\frac{1}{2}$ " wide by the width of the fabric **D** to make a final strip 262" long. Start sewing the binding strip in the middle of one of the sides of the quilt, placing the strip right side down and leaving an approximate 5" tail. Sew with $\frac{1}{4}$ " seam allowance (using straight stitch), aligning the strip's raw edge with the quilt top's raw edge.
- Stop stitching $\frac{1}{4}$ " before the edge of the quilt (DIAGRAM B1). Clip the threads. Remove the quilt from under the machine presser foot. Fold the strip in a motion of 45° and upward, pressing with your fingers (DIAGRAM B2). Hold this fold with your finger, bring the strip down in line with the next edge, making a horizontal fold that aligns with the top edge of the quilt (DIAGRAM B3). Start sewing at $\frac{1}{4}$ " of the border, stitching all the layers. Do the same in the four corners of the quilt.
- Stop stitching before you reach the last 5 or 6 inches. Cut the threads and remove the quilt from under the machine presser foot. Lay the loose ends of the binding flat along the quilt edge, folding the ends back on themselves where they meet. Press them together to form a crease. Using this crease as the stitching line, sew the two open ends of the binding with right sides together (you can help yourself by marking with a pencil if the crease is difficult to see).
- Trim seam to $\frac{1}{4}$ " and press open. Complete the sewing. Turn binding to back of the quilt, turn raw edge inside and stitch by hand using blind stitch.

DIAGRAM B1

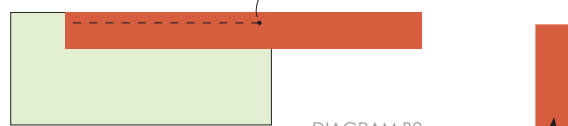


DIAGRAM B2

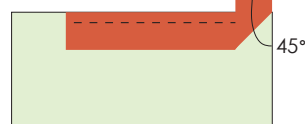
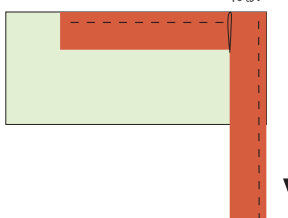


DIAGRAM B3



CONGRATULATIONS!



Feel the difference
For more free patterns visit:

artgalleryfabrics.com

NOTE: While all possible care has been taken to ensure the accuracy of this pattern, we are not responsible for printing errors or the way in which individual work varies. Please read instructions carefully before starting the construction of this quilt. If desired, wash and iron your fabrics before starting to cut.

© 2014 Courtesy of Art Gallery Quilts LLC.
All Rights Reserved.