

Waves

Featuring "BELLE EPOQUE" Collection



AN-14



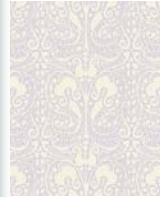
AN-24



AN-11



AN-21



AN-12



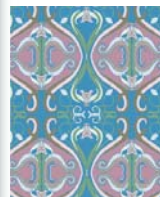
AN-22



AN-13



AN-23



AN-16



AN-26

Free Project Sheet



AN-15



AN-25

Quilt designed by Patricia Bravo for Art Gallery Quilts

All seam allowances are 1/4". Please read all directions before beginning and press carefully after each step.

Fabric Requirements: BELLE EPOQUE COLLECTION

Fabric A: 1 yd. of AN-24
Fabric B: 3/4 yd. of AN-26
Fabric C: 1 yd. of AN-14

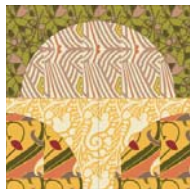
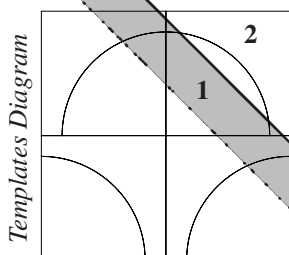
Fabric D: 3/4 yd. of AN-16
Fabric E: 1 yd. of AN-22
Fabric F: 3/4 yd. of AN-21

Fabric G: 1 yd. of AN-12
Fabric H: 1-1/4 yd. of AN-11

Cutting Directions: This quilt consist of 1 block made in two different colorations.

For each of the 18 blocks in warm colors cut:

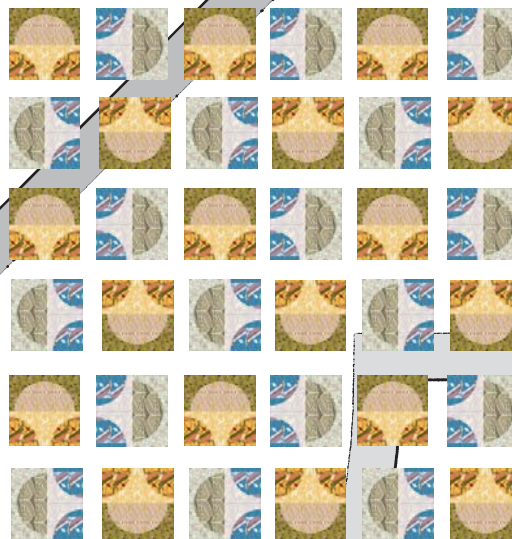
Two 5-1/2" squares from fabrics A and E.
 Two 4-5/8" squares from fabrics B and F.



Template 1

For each of the 18 blocks in cool colors cut:

Two 5-1/2" squares from fabrics C and G.
 Two 4-5/8" squares from fabrics D and H.



Quilt Diagram

Block Assembly: (Letters correspond to fabric styles, numbers correspond to templates)

For each of the 18 blocks in warm colors sew: (right sides together)

Put the Template 2 on top of fabric A. Mark and cut the curves.
 Put the Template 1 on top of fabric F. Mark and cut the curves.
 Sew these two fabric pieces together. Repeat this process again, making 2 equal units. Sew them together.
 Put Template 2 on top of fabric E. Mark and cut the curves. Put Template 1 on top of fabric B. Mark and cut the curves. Sew these two fabric pieces together. Repeat this process again, making 2 equal units. Sew them together.
 Sew the final two units together. Make 18 blocks.

For each of the 18 blocks in cool colors sew: (right sides together)

Put the Template 2 on top of fabric C. Mark and cut the curves.
 Put the Template 1 on top of fabric H. Mark and cut the curves.
 Sew these two fabric pieces together. Repeat this process again, making 2 equal units. Sew them together.
 Put Template 2 on top of fabric G. Mark and cut the curves. Put Template 1 on top of fabric D. Mark and cut the curves. Sew these two fabric pieces together. Repeat this process again, making 2 equal units. Sew them together.
 Sew the final two units together. Make 18 blocks.

Quilt Top Assembly:

Now, start piecing the first row, alternating between warm and cool blocks and rotating their position (see the *Quilt Diagram*). For the second row, alternate the colors and the position again. Continue piecing all the rows.

Now, sew the rows together. Follow with the binding from fabric H.
 Layer, quilt and bind as desired.

Template 2

While all possible care has been taken to ensure the accuracy of this pattern, we are not responsible for printing errors or the way in which individual work varies.