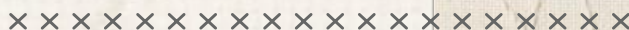




Rising ground



FREE PATTERN



Rising ground

AGF studio

QUILT DESIGNED BY AGF STUDIO



FABRICS DESIGNED BY

leafduncan



FINISHED SIZE | 60'x70'



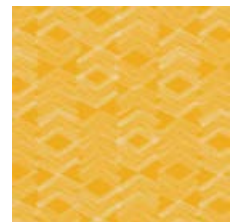
MWK-1117
DESERT NEEDLEWORK GLORY



MWK-1120
WISPY DAYBREAK NIMBUS



MWK-2118
VITRINE WATERMARKS ZEST



MWK-2115
LIMESTONE FEEL PITAHAYA



MWK-2116
MOJAVE ALOE

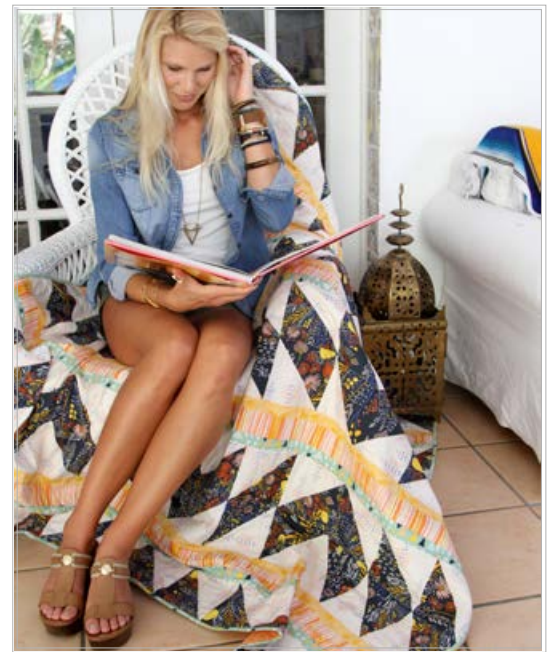
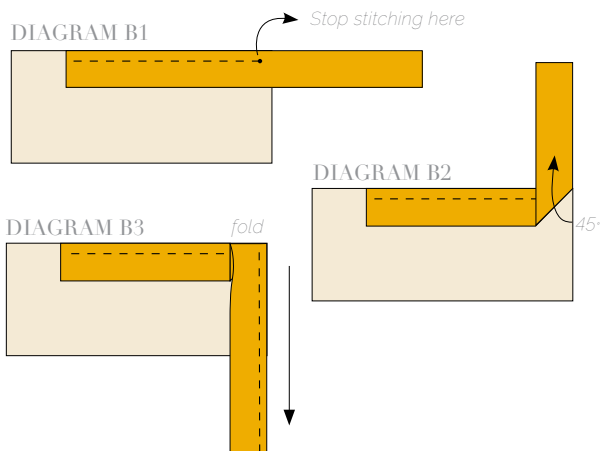


MWK-2114
MINIFLORES SUNBATHED





- Press them together to form a crease. Using this crease as the stitching line, sew the two open ends of the binding with right sides together (you can help yourself marking with a pencil if the crease is difficult to see).
- Trim seam to ¼" and press open. Complete the sewing. Turn binding to back of the quilt, turn raw edge inside and stitch by hand using blind stitch.



Congratulations & enjoy



artgalleryfabrics.com

NOTE: While all possible care has been taken to ensure the accuracy of this pattern, we are not responsible for printing errors or the way in which individual work varies. Please read instructions carefully before starting the construction of this quilt. If desired, wash and iron your fabrics before starting to cut.