

FREE PATTERN

XXXXXXXXXXXXXXXXXXXX

DEC.



XXXXXXXXXXXXXXXXXXXX

XX

DEC.



DENIM PRINTS



STYLE	DEN-P-1000
NAME	PAINTERLY WASH



STYLE	DEN-P-1001
NAME	DITSY ABRASION



STYLE	DEN-P-1002
NAME	RAGGED DAISIES



STYLE	DEN-P-1003
NAME	DIAMOND ARCUATE



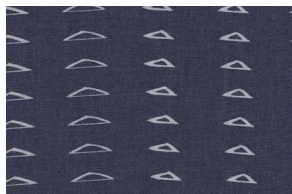
STYLE	DEN-P-1004
NAME	PUZZLE SANDBLAST



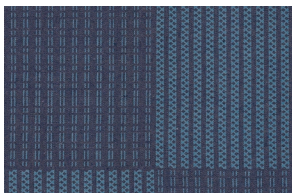
STYLE	DEN-P-1005
NAME	STITCHED-OCHI



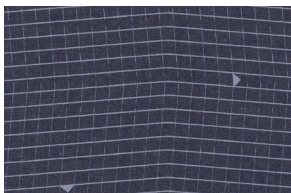
STYLE	DEN-P-1006
NAME	POINTELLE RINGS



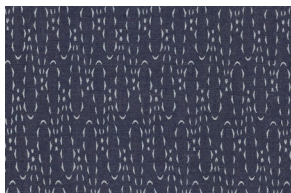
STYLE	DEN-P-1007
NAME	DISTRESSED TRIANGLES



STYLE	DEN-P-1008
NAME	ALLOVER BARTACKS

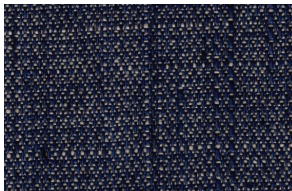


STYLE	DEN-P-1009
NAME	BOMBAZINE INSPIRED

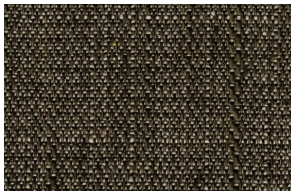


STYLE	DEN-P-1010
NAME	CASTED LOOPS

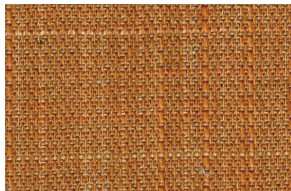
SOLID TEXTURED DENIM



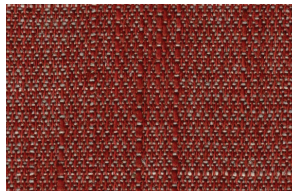
STYLE	DEN-T-3000
NAME	BLUEBOTTLE FIELD



STYLE	DEN-T-3001
NAME	EVERGREEN SLATE

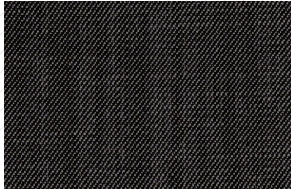


STYLE	DEN-T-3002
NAME	CANYON SUNSET

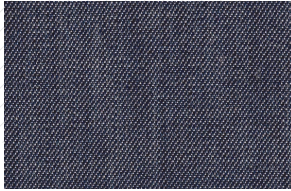


STYLE	DEN-T-3003
NAME	SCARLET BRICK

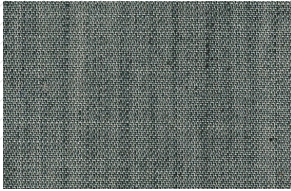
SOLID SMOOTH DENIM



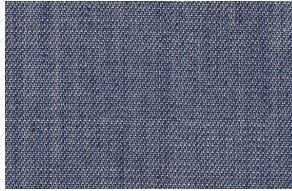
STYLE DEN-S-2000
NAME WICKED SKY



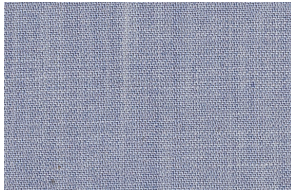
STYLE DEN-S-2001
NAME INDIGO SHADOW



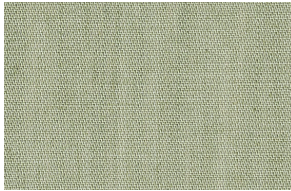
STYLE DEN-S-2002
NAME COOL FOLIAGE



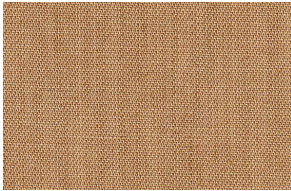
STYLE DEN-S-2003
NAME AFTERNOON SAIL



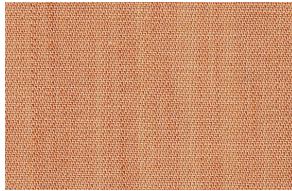
STYLE DEN-S-2004
NAME INFUSED HYDRANGEA



STYLE DEN-S-2005
NAME FROSTED SAGE



STYLE DEN-S-2006
NAME ADOBE CLAY



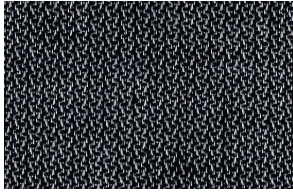
STYLE DEN-S-2007
NAME NECTARINE SUNRISE

PREMIUM LINEN BLEND



STYLE DEN-L-4000
NAME SOFT SAND

LOVEY DOBBY



STYLE DEN-D-5000
NAME EVENING LAKEVIEW



DEC.

QUILT DESIGNED BY AGF STUDIO

FINISHED SIZE | 45½' x 32½'

FABRIC REQUIREMENTS

Fabric A	DEN-L-4000	¾ yd.
Fabric B	DEN-S-2003	fat ¼ yd.
Fabric C	DEN-S-2004	fat 8 yd.
Fabric D	DEN-S-2005	fat 8 yd.
Fabric E	DEN-S-2006	fat 8 yd.
Fabric F	DEN-S-2007	fat 8 yd.
Fabric G	DEN-S-2002	fat 8 yd.
Fabric H	DEN-S-2000	fat 8 yd.
Fabric I	DEN-D-5000	fat 8 yd.
Fabric J	DEN-P-1000	fat 8 yd.
Fabric K	DEN-P-1001	fat 8 yd.
Fabric L	DEN-P-1002	fat 8 yd.
Fabric M	DEN-P-1003	fat 8 yd.
Fabric N	DEN-P-1004	fat 8 yd.
Fabric O	DEN-P-1005	fat 8 yd.
Fabric P	DEN-P-1006	fat 8 yd.
Fabric Q	DEN-P-1007	fat 8 yd.
Fabric R	DEN-P-1008	fat 8 yd.
Fabric S	DEN-P-1009	fat 8 yd.
Fabric T	DEN-P-1010	fat 8 yd.
Fabric U	DEN-T-3002	fat 8 yd.
Fabric V	DEN-T-3003	fat 8 yd.
Fabric W	DEN-T-3001	fat ¼ yd.
Fabric X	DEN-T-3000	¼ yd.

BACKING FABRIC

PE-465 1½ yds. *(Suggested)*

BINDING FABRIC

DEN-L-4000 (Fabric **A**) *(included)*

CUTTING DIRECTIONS

¼" seam allowances are included.
WOF means width of fabric.

TOOLS NEEDED

Use triangle template by taping pieces together at the notches.

Twenty-two (22) triangles from fabric **A**.

Three (3) triangles from fabric **B**.

Two (2) triangles from fabric **C**.

One (1) triangles from fabric **D-T**.

One (1) 20½' x 2' strip from fabric **U**.

One (1) 15' x 2' strip from fabric **V**.

One (1) 15½' x 2' strip from fabric **W**.

One (1) 10' x 2' strip from fabric **W**.

Four (4) 8½' x 2' strips from fabric **X**.

One (1) 15' x 2' strip from fabric **X**.

One (1) 15½' x 2' strip from fabric **X**.

One (1) 20½' x 2' strip from fabric **X**.

One (1) 10' x 2' strip from fabric **X**.

CONSTRUCTION

Sew all rights sides together with 1/4" seam allowance.

- Arrange the triangles together in rows.
- You will have four rows of triangles made of eleven triangles each.
- Follow the cover picture for triangles placement.
- To attach them together place triangles in alternating order, one triangle pointing down and the other pointing up.



DIAGRAM 1

- To sew the rows together, place the first two pieces right sides together.

Sew here



DIAGRAM 2

- For the borders you will need four different strips combinations.
- Strip #1: Take one 8½' strip from fabric **X**, one 20½' strip from fabric **U** and one 15' strip from fabric **X**.
- Attach them in the order **XUX**.
- Strip #2: Take one 20½' strip from fabric **X**, one 15' strip from fabric **V** and one 8½' strip from fabric **X**.
- Attach them in the order **XVX**.
- Strip #3: Take one 10' strip from fabric **X**, one 15½' strip from fabric **W** and one 8½' strip from fabric **X**.
- Attach them in the order **XWX**.
- Strip #4: Take one 15½' strip from fabric **X**, one 10' strip from fabric **W** and one 8½' strip from fabric **X**.
- Attach them in the order **XWX**.

ASSEMBLING THE TOP

Sew all rights sides together with 1/4" seam allowance. Press open.

- Sew all four rows together.
- Stitch the rows together following the cover picture as a guide.
- Trim the excess fabric.
- Attach the border strips to the edges.
- Strip#1: top Strip#2:bottom Strip#3: left side. Strip#4: right side.



QUILT ASSEMBLY

Sew rights sides together.

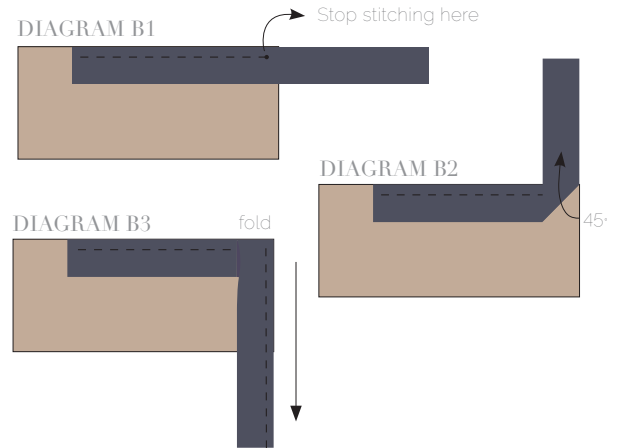
- Place BACKING FABRIC on a large surface wrong side up. Stretch it with masking tape against that surface.
- Place BATTING on top of backing fabric.
- Place TOP on top of the batting with right side facing up. Smooth away wrinkles using your hands.
- Pin all layers together and baste with basting thread, using long stitches. You can also use safety pins to join the layers.
- Machine or hand quilt starting at the center and working towards the corners. Remember that quilting motifs are a matter of personal preference. Have fun choosing yours!
- After you finished, trim excess of any fabric or batting, squaring the quilt to proceed to bind it.

BINDING

Sew rights sides together.

- Cut enough strips $1\frac{1}{2}$ ' wide by the width of the fabric **A** to make a final strip 166' long. Start sewing the binding strip in the middle of one of the sides of the quilt, placing the strip right side down and leaving an approximated 5' tail. Sew with $\frac{1}{4}$ ' seam allowance (using straight stitch), aligning the strip's raw edge with the quilt top's raw edge.
- Stop stitching $\frac{1}{4}$ ' before the edge of the quilt (**DIAGRAM B1**). Clip the threads. Remove the quilt from under the machine presser foot. Fold the strip in a motion of 45° and upward, pressing with your fingers (**DIAGRAM B2**). Hold this fold with your finger, bring the strip down in line with the next edge, making a horizontal fold that aligns with the top edge of the quilt (**DIAGRAM B3**). Start sewing at $\frac{1}{4}$ ' of the border, stitching all the layers. Do the same in the four corners of the quilt.

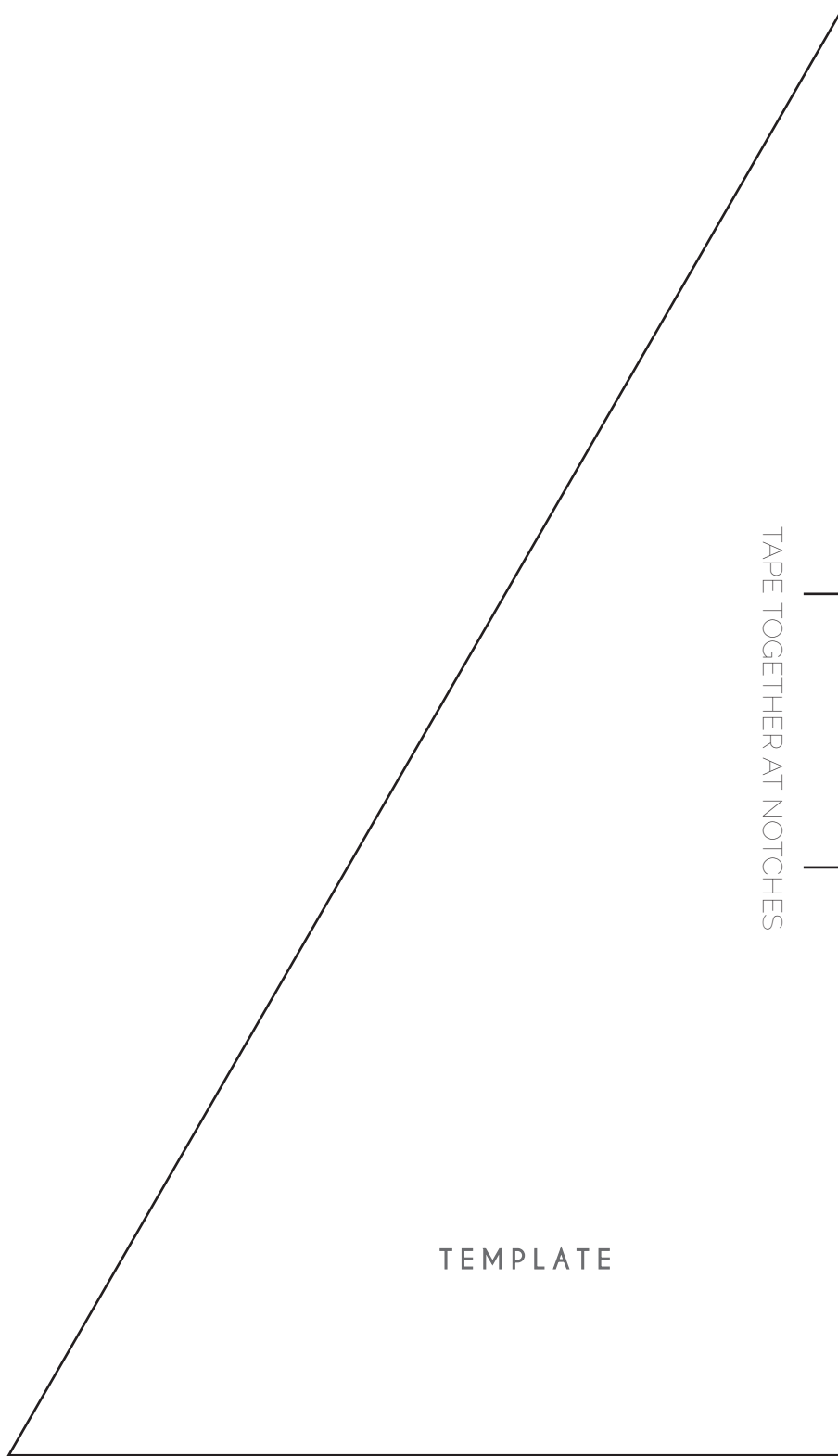
- Stop stitching before you reach the last 5 or 6 inches. Cut the threads and remove the quilt from under the machine presser foot. Lay the loose ends of the binding flat along the quilt edge, folding the ends back on themselves where they meet. Press them together to form a crease. Using this crease as the stitching line, sew the two open ends of the binding with right sides together (you can help yourself marking with a pencil if the crease is difficult to see).
- Trim seam to $\frac{1}{4}$ ' and press open. Complete the sewing. Turn binding to back of the quilt, turn raw edge inside and stitch by hand using blind stitch.



artgalleryfabrics.com

NOTE: While all possible care has been taken to ensure the accuracy of this pattern, we are not responsible for printing errors or the way in which individual work varies. Please read instructions carefully before starting the construction of this quilt. If desired, wash and iron your fabrics before starting to cut.

© 2015 Courtesy of Art Gallery Quilts LLC. All Rights Reserved.



TAPE TOGETHER AT NOTCHES

TEMPLATE